



ADJUSTABLE FRONT LOWER CONTROL ARMS FOR 0-4.5” LIFT

(2018-2023+ WRANGLER JL)

INSTALLATION INSTRUCTIONS

CONTENTS

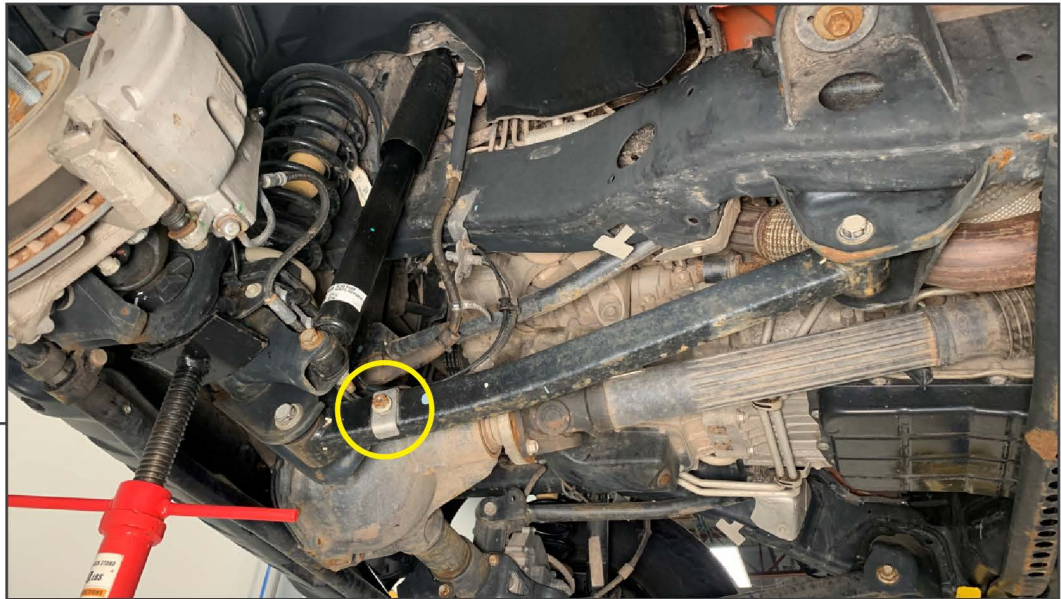
- (1) LH Control Arm Assembly
- (1) RH Control Arm Assembly

TOOLS REQUIRED

- 15mm Socket/Wrench
- 21mm Socket/Wrench
- 24mm Socket/Wrench
- 8mm Allen Socket
- Ratchet/Breaker Bar
- Jack & Jack Stands
- Pry Bar
- Cable Ties

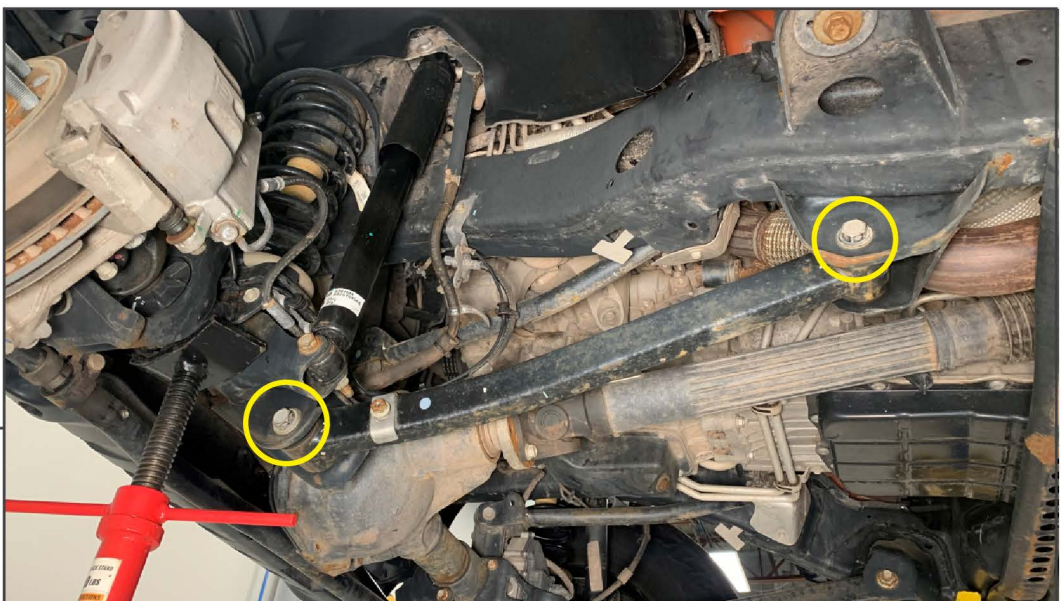
SKU # J189771

STEP 1



Lift and support the vehicle using a jack and jack stands. Locate and remove (1) 15mm nut from the brake line bracket secured to the lower control arm. Allow brake line bracket to hang away from the control arm.

STEP 2



Locate and remove the (2) 21mm bolts from the lower control arm. Hold the nut in place with a 24mm wrench while loosening the bolt.



STEP 3

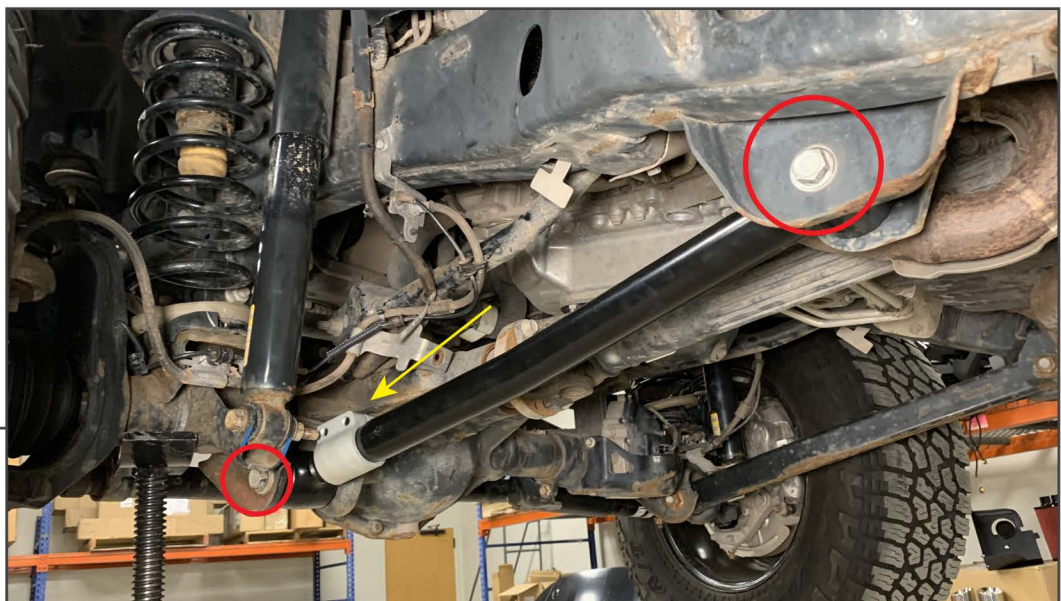
Loosen the (2) 8mm Allen bolts on the clamp to allow the adjustable tie rod to move inwards/outwards. Set the controls arms length to the length below. The length may need to be adjusted slightly depending on specific vehicle height.

2.5" Lift: 24 1/4"

3.5" Lift: 24 7/16"

4.5" Lift: 24 5/8"

Note: Ensure the Allen bolt side of the clamp is towards the top of the control arm.



STEP 4

Install the new lower control arm into the vehicle reusing the original hardware. With the vehicle on the ground with the wheels installed, tighten the control arm to 103 ft. lbs. + 145 degrees.

Use cable ties to secure the brake line/ABS sensor wiring.

Repeat steps 1-4 to the opposite side of the vehicle. Installation is now complete.