



J186382 J186383

Double Drawer



PARTS LIST:

| | | | |
|----|--|---|----------------------------|
| 1 | Double Drawer | 4 | Spring Washer 8mmx14mmx2mm |
| 4 | Mounting Rail Screw M8-1.25mmx75mm Hex Bolts | 1 | Allen Wrench |
| 12 | 8mm x 25mm OD x 2mm Flat Washer | 4 | Drawer Key |
| 4 | 13mmx25mm ODx26mm Alu Spacer | | |



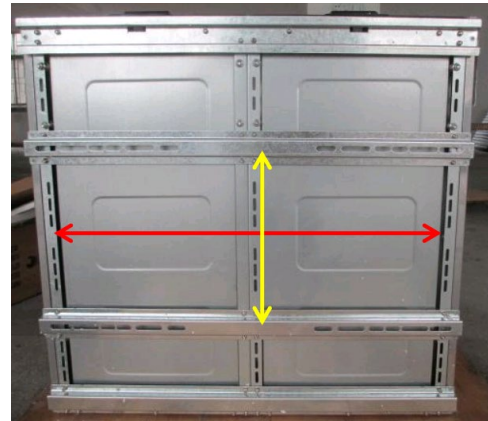
PROCEDURE: REMOVE CONTENTS FROM BOX. VERIFY ALL PARTS ARE PRESENT. READ INSTRUCTIONS CAREFULLY BEFORE STARTING INSTALLATION.

Installation Guide

Firstly check the trunk of your car to locate the right position for mounting the drawer.



Check the distance between the chair mounting points and compare with the mounting rail at the bottom of drawer.



Mounting rail:

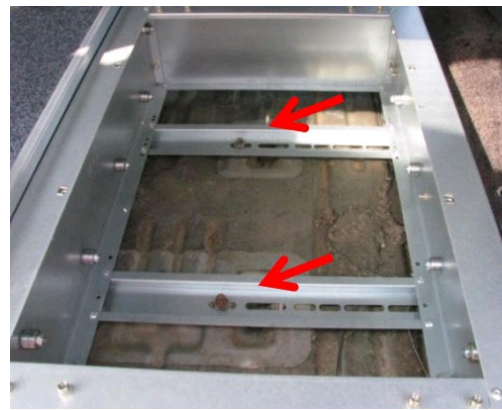
1. Put the drawer inside the car.



2. Loosen the screws on the hard top side (no fridge slide) to remove the hard top off.



3. Adjust the position of mounting rail to fit the chair mounting point and put the screws and tighten.



If you prefer to rise the drawer higher, you can install the Alu spacer between the bottom of the rearward mounting rib and the vehicle floor. Install a 10mm bolt and washer supplied to each side in the existing holes before Step 3.



- Put the drawer tub into the drawer frame.



- Put on the hard top on drawer frame and tighten the screws.



Complete Installation

