



Installation Instructions



FITS: 18+ Jeep Wrangler JL
2020+ Jeep Gladiator JT

Front Half Door
Part#: J84904

TOOLS NEEDED

Ratchet	T50 Torx Bit	Allen Wrench Set
13mm Wrench	Phillips Screwdriver	





COMPONENTS & HARDWARE

Hardware #	DESC.	QTY	IMAGE
B11-15-0890	Front Door (Driver Side)	1	
B11-15-0898	Front Door (Passenger Side)	1	
B11-15-0900	Inner Mesh Screen	2	
B11-15-0901	Door Foam Strip	2	
B11-15-0945	Door Strap	2	
B11-15-0140	Rubber Gasket	2	

HINGES HARDWARE

Hardware #	DESC.	QTY	IMAGE	Hardware #	DESC.	QTY	IMAGE
B11-15-0860	Door Hinge(Driver Side)	2		E40-12-0026	M8 Flat Washer	12	
B11-15-0861	Door Hinge(Passenger Side)	2		E40-12-0008	M8 Split Washer	8	
E40-13-0034	M8x20mm Allen Head Bolt	8		E40-11-0007	M8 Lock Nut	4	
E40-11-0024	M8 Hex Head Nut	8					

DOOR LATCH HARDWARE

Hardware #	DESC.	QTY	IMAGE	Hardware #	DESC.	QTY	IMAGE
B15-12-0003	Door Latch (Driver Side)	1		E40-12-0042	M6 Flat Washer	4	
B15-12-0004	Door Latch (Passenger Side)	1		E40-12-0007	M6 Split Washer	4	
E40-13-0031	M6x25mm Allen Head Bolt	4					

MIRRORS HARDWARE							
Hardware #	DESC.	QTY	IMAGE	Hardware #	DESC.	QTY	IMAGE
B11-27-0140	Side View Mirror (Driver Side)	1		E40-12-0025	M6 Flat Washer	16	
B11-27-0142	Side View Mirror (Passenger Side)	1		E40-12-0007	M6 Split Washer	8	
E40-13-0031	M6x25mm Button Head Bolt	8		E40-11-0023	M6 Hex Head Nut	8	



Thank you for purchasing our Half Door Please take a few minutes to read and thoroughly familiarize yourself with the installation procedures in this manual. Following the steps as outlined will save you time and help reduce mistakes. Once the instructions are reviewed, if you feel that you are not capable of safely installing the parts seek the help of a qualified installation expert to help you complete the job. For Technical assistance call 866-988-8348



IMPORTANT NOTICE and DISCLAIMER:

Modification of your vehicle may create a dangerous condition which could cause property damage to personal property or serious bodily injury. The buyer hereby expressly assumes all risks associated with any such modifications.

The Manufacturer of this product will not accept responsibility for personal injury or property damage arising from the failure of any parts manufactured or sold by Paramount Automotive or any of its agents.

California Proposition 65 Warning!

This product may contain one or more chemicals known to the State of California to cause cancer and birth defects or other reproductive harm. For more information go to www.P65Warnings.ca.gov.

DOOR HINGE INSTALLATION

Front Door

Driver top hinge



Driver bottom hinge



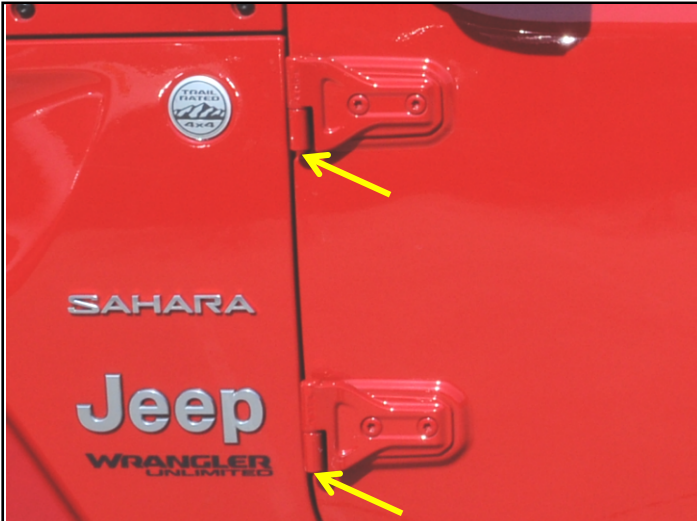
Step 1.

Front Door Installation

Locate one driver top hinge. Line up the holes in the hinge with the holes in the top mounting holes on the tubular door. Place a supplied M8x20mm button bolt through the hole in the hinges and through the hole on the door. Place a supplied M8 flat washer and M8 split washer at the end of the bolt. Start a supplied M8 hex nut at the end of bolt. Repeat step for remaining button head bolt.

Repeat process for other front door.

Removing of Factory Door



Step 1.
Using a T50 torx socket remove the 2 nuts attached to the bottom of the hinge pins on the front doors. Set nuts aside for later use.



Step 2.
Inside the door by the kick panel area remove the wiring cover



Step 3.
Unclip the wiring harness that is attached to the door



Step 4.
Lift off the door stopper strap.

Removing of Factory Door continued



Step 5.

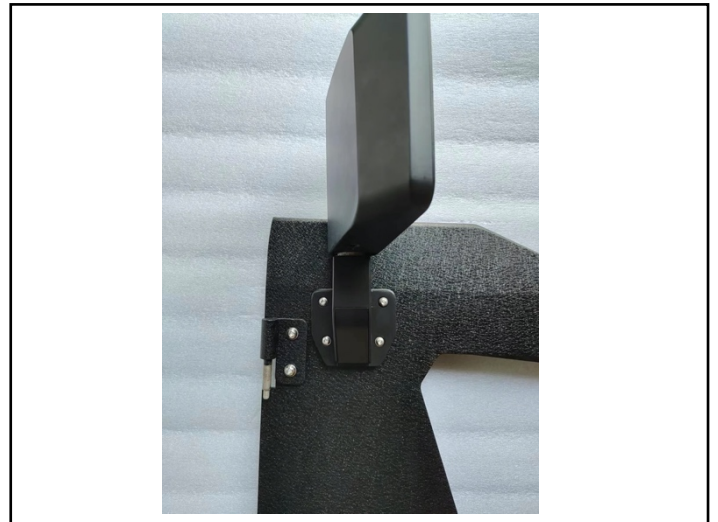
Unclip the wiring harness that is attached to the door

Installing Front Doors



Step 1.

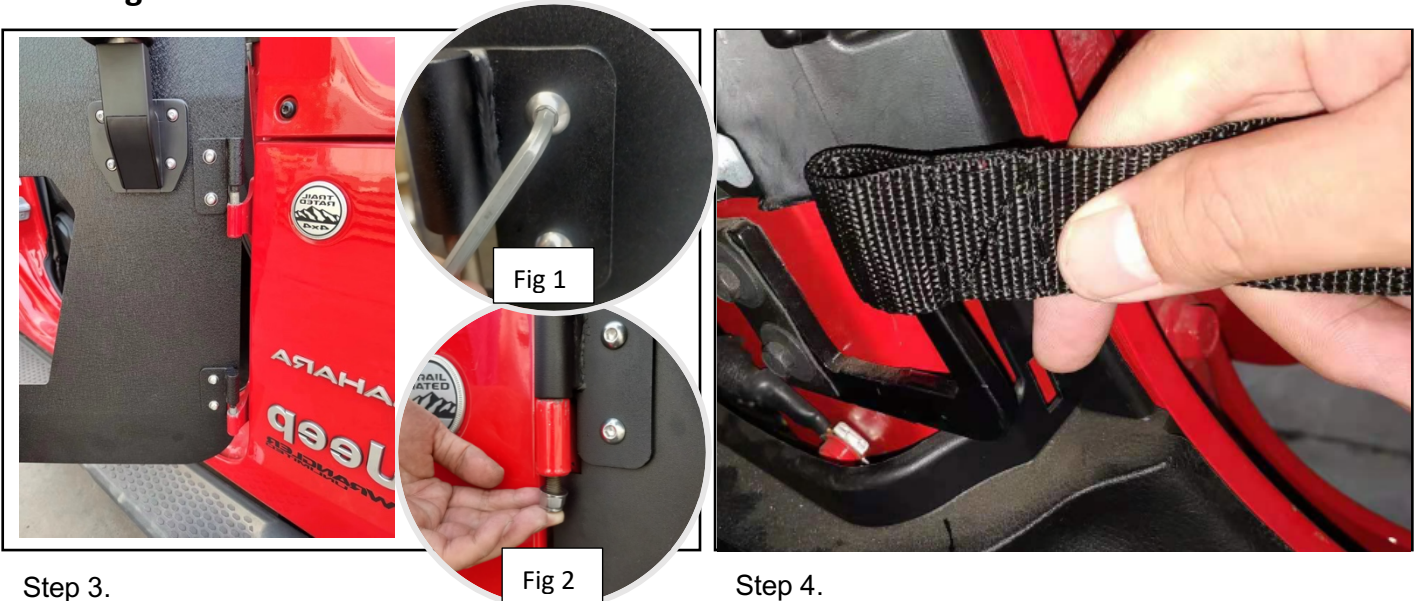
Locate and place supplied mirror onto supplied door. Line up the holes in the mirror with the holes in the tubular door.



Step 2.

Place a supplied M6x25mm button head bolt with supplied M6 flat washer through the hole in the mirror and through the hole in the door. Place a supplied M6 flat washer and a supplied M6 split washer at the end of bolt. Start a supplied M6 hex nut at the end of bolt. Repeat step for remaining bolts. Once all bolts are installed tighten down all bolts using a 10mm socket. Repeat step 1-2 for other side of vehicle.

Installing Front Doors Continued



Step 3.

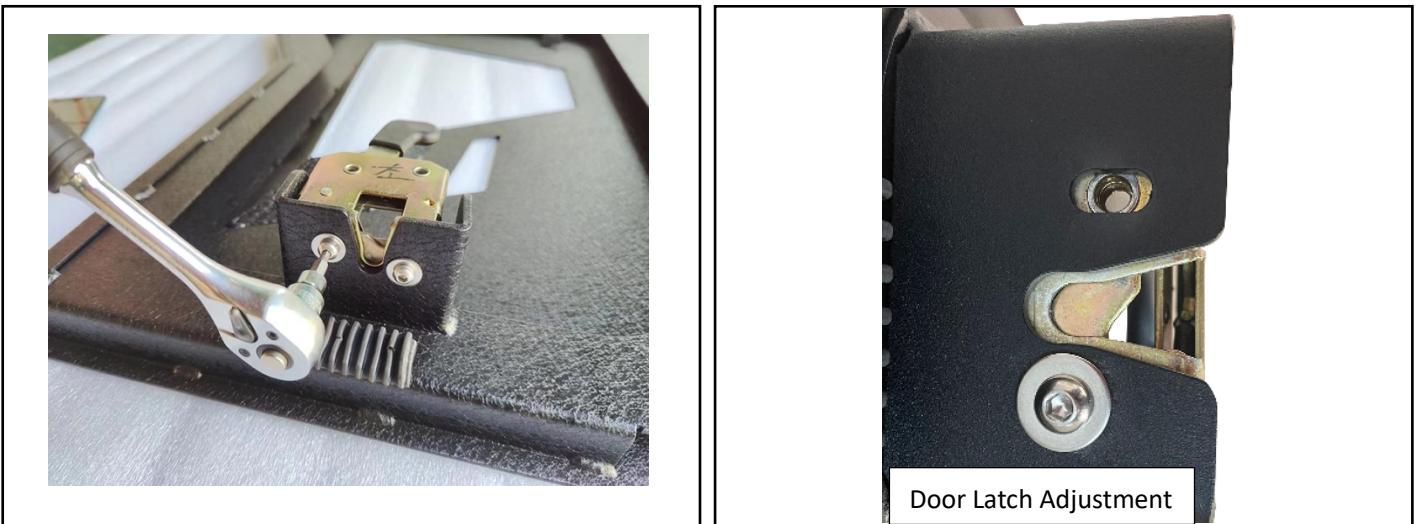
Lower the door onto the factory hinges on the vehicle. Open and close the door ensuring proper operation. Once satisfied with the function proceed to tighten down the hinge bolts using a 13 mm socket on the bolt and a 3/16" Allen head wrench on the bolts (Fig 1).

Using supplied M8 flat washer and M8 lock nut, bolt the door onto the hinges (Fig 2).

Step 4.

Attach the new door stopper straps provided on the new door.

Installing Door Latch



Step 1.

Place the supplied M6x25mm Allen head bolt, M6 split washer and M6 mounting washer through the hole in the door and the hole in the door latch. Using a 5/32 Allen wrench tighten down slightly.

Step 2.

Grab door latch handle and begin to adjust the door latch forward and backward until find the proper position (this might take a few tries). Close the door to make sure there is no rattling.

Installation Finished