



HAWK GRILLE

(2007-2018 WRANGLER JK)

INSTALLATION INSTRUCTIONS

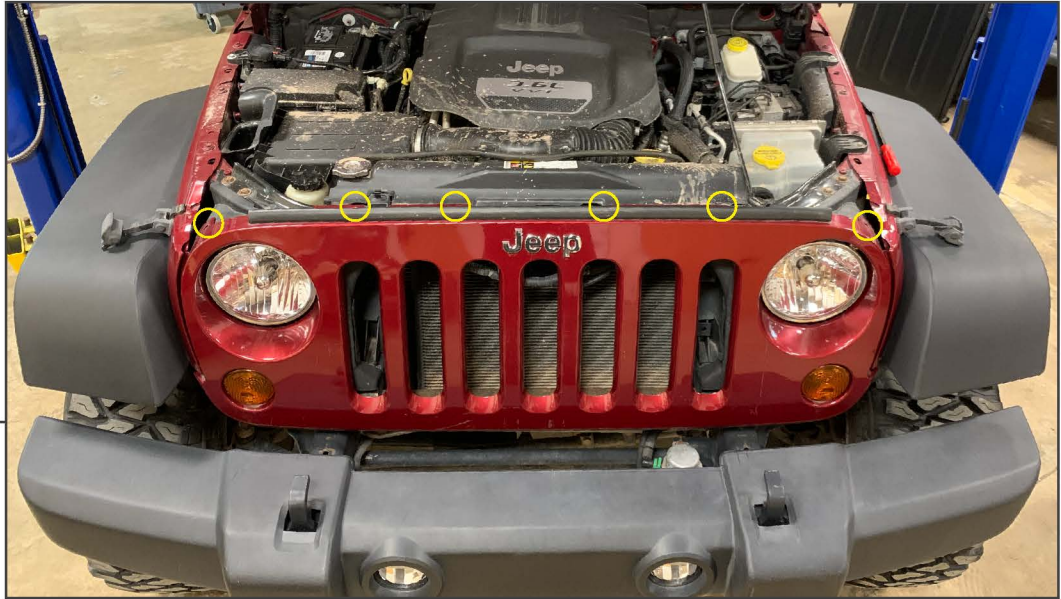
CONTENTS

- (1) Grille
- (6) Plastic Push Clips
- (6) Metal Clips
- (1) Weather Seal

TOOLS REQUIRED

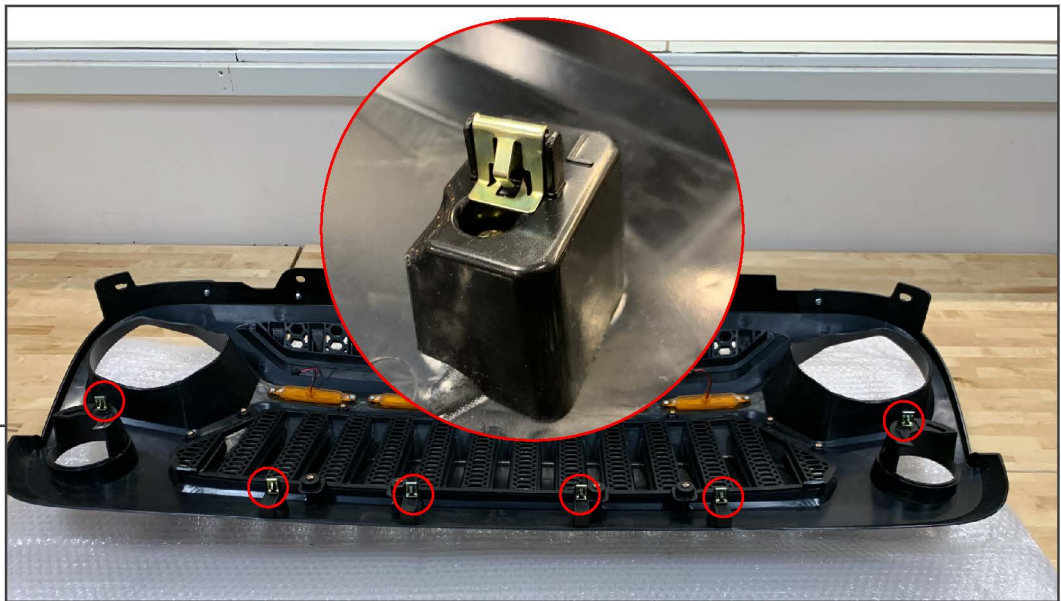
- Soft Pry Tool
- Phillips Head Screwdriver
- Flat Blade Screwdriver

SKU # J183263



STEP 1

Using a soft pry tool, remove the (6) plastic push pins across the top of the factory grille cover. Then firmly pull the grille cover away from the vehicle. Disconnect the factory turn signal plugs. Slide back the red tab lock, then depress the tab and pull the plug away from the light.



STEP 2

Install the (6) supplied push clips to the clip posts across the bottom of the new grille.



STEP 3

Depress the plastic tabs on the turn signal and push the turn signal out of the factory grille cover. Transfer the removed turn signals into the new grille.



STEP 4

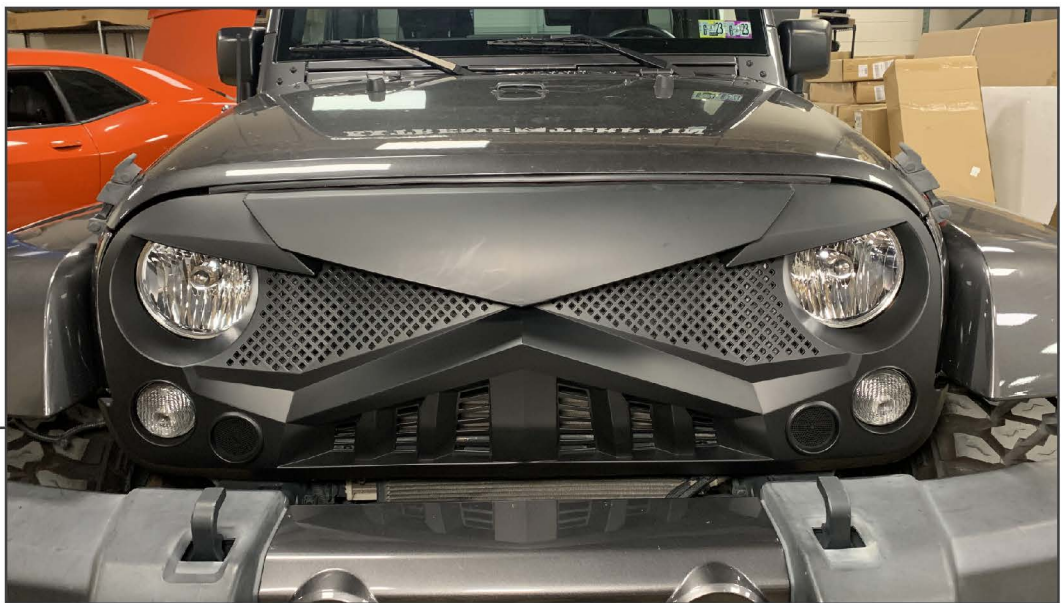
Install the (8) vampire clips to the bottom of the grille assembly.



STEP 5

Press the new grille to the vehicle, engaging the lower vampire clips to the radiator support. Then, secure the top of the grille to the vehicle using the (6) plastic push clips.

Install the supplied weather stripping across the top of the grille cover. Trim as needed.



STEP 6

Installation is now complete.