



RUBI RAIL

(2007-2018 WRANGLER JK - 4 DOOR)

INSTALLATION INSTRUCTIONS

Contents

(2) Rocker Rails
(4) Threaded Metal Clips
(12) Lock Nuts
(12) Flat Washers

Tools Required

Metric Socket Set
Open End Wrench Set

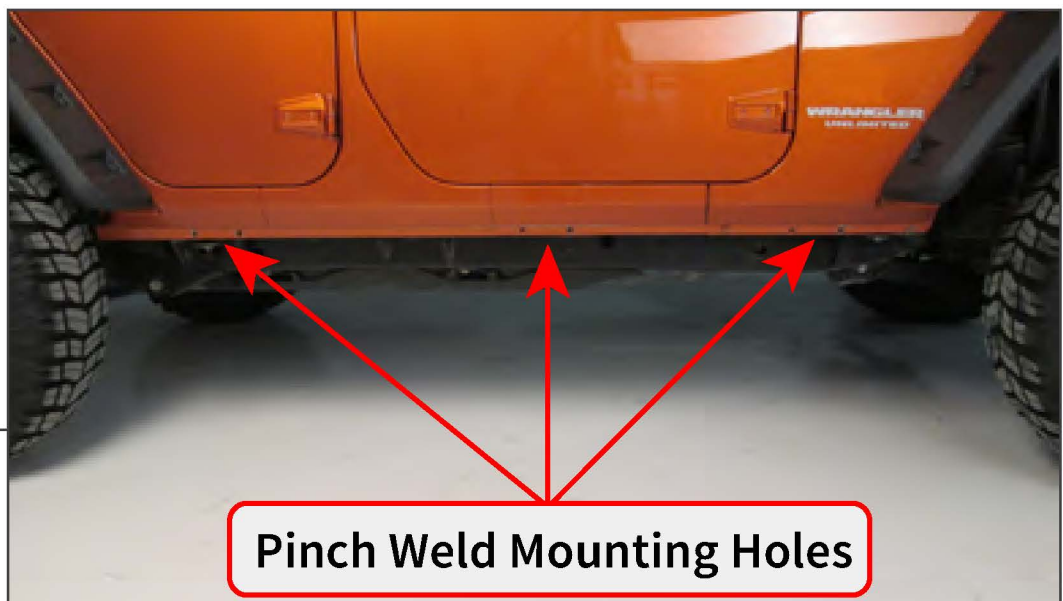
SKU # J179913

STEP 1A



Begin by installing (2) threaded metal clips on the underside of the body.

STEP 1B

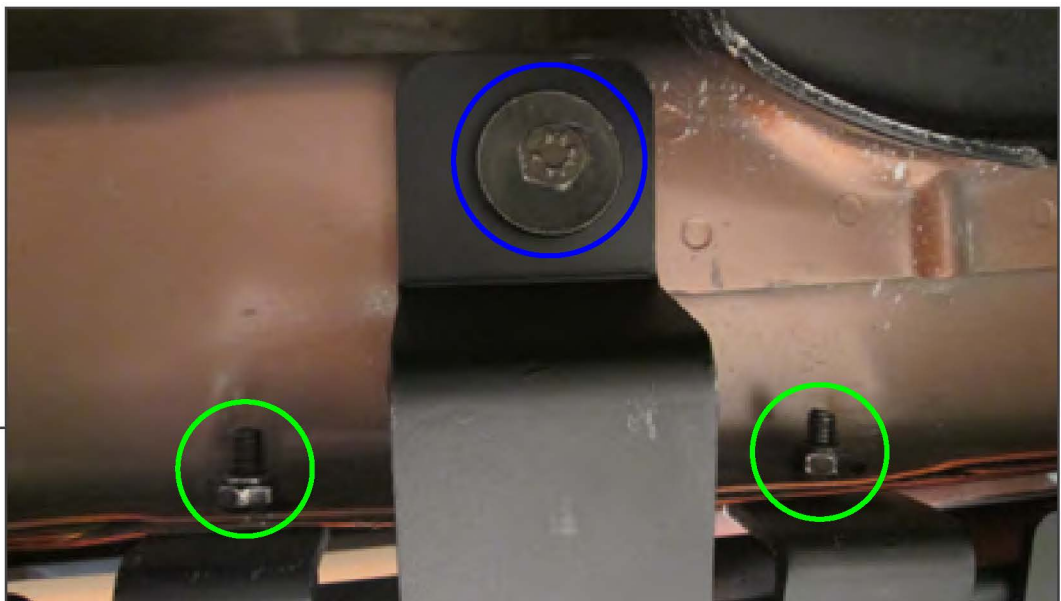


The metal clips are located directly behind each pair of pinch weld mounting holes. (4-door Wranglers only need threaded clips on the front and middle locations).

STEP 2



STEP 3



Once the rail is seated properly in each location, secure the pinch weld studs, marked in green, first with the supplied (2) flat washers and (2) lock nuts. Once the rail is aligned and secured along the pinch weld, install the supplied (2) bolts, marked in blue. Repeat this step across the entire rail mounting points.



STEP 4

Repeat steps 1-3 to the opposite side of the vehicle.

Installation is now complete.