



# RUBI RAIL

(2007-2018 WRANGLER JK - 2 DOOR)

---

## INSTALLATION INSTRUCTIONS

### Contents

---

- (2) Rocker Rails
- (4) Threaded Metal Clips
- (8) Lock Nuts
- (8) Flat Washers

### Tools Required

---

- Metric Socket Set
- Open End Wrench Set

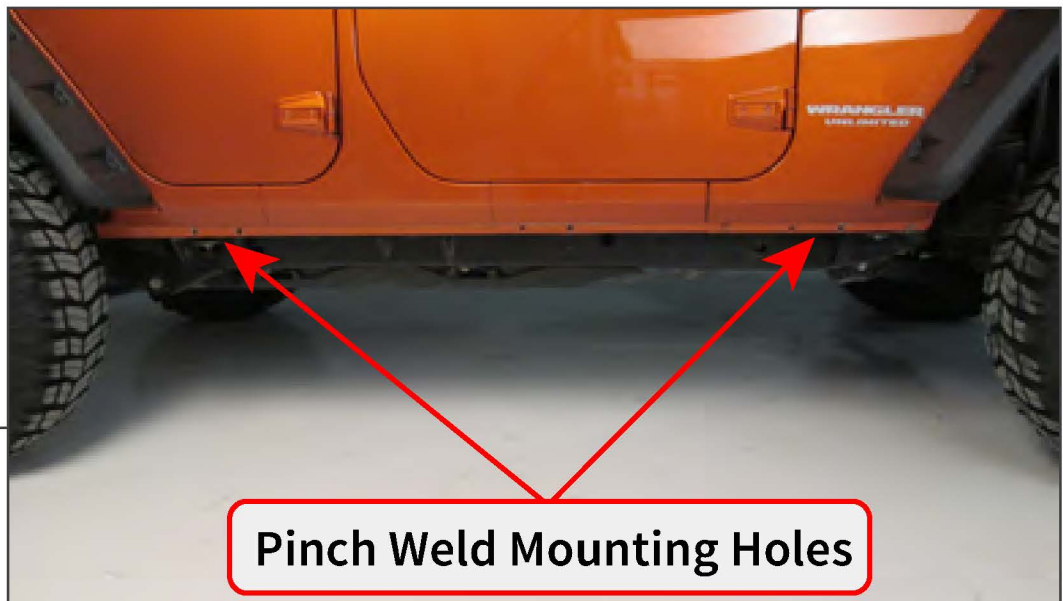
SKU # J179912

**STEP 1A**



Begin by installing (2) threaded metal clips on the underside of the body.

**STEP 1B**



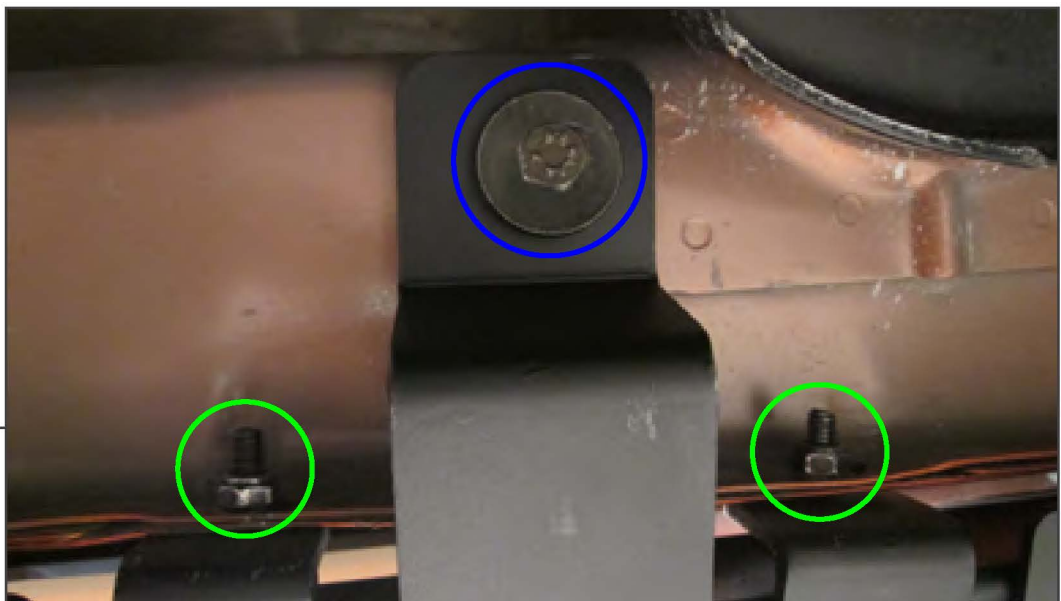
The metal clips are located directly behind each pair of pinch weld mounting holes.

## STEP 2



Before attempting to install, make sure you have the correct rail for each side. The rear mounting location is offset towards the front of the rail/vehicle, this should help you figure out left and right. Pinch welds consist of multiple layers, which are pre-cut before assembly, and can line up differently on each vehicle. If you experience and slight fitment issues, it is sometimes helpful to bore out the mounting holes with a drill bit for extra clearance. Be sure to treat any exposed metal after drilling to prevent corrosion.

## STEP 3



Once the rail is seated properly in each location, secure the pinch weld studs, marked in green, first with the supplied (2) flat washers and (2) lock nuts. Once the rail is aligned and secured along the pinch weld, install the supplied (2) bolts, marked in blue. Repeat this step across the entire rail mounting points.



---

## STEP 4

Repeat steps 1-3 to the opposite side of the vehicle.

Installation is now complete.