



ROCKER GUARDS WITH STEP

(1997-2006 WRANGLER TJ; EXCLUDING UNLIMITED)

INSTALLATION INSTRUCTIONS

CONTENTS

- (1) LH Rocker Guard
- (1) RH Rocker Guard
- (10) M10x1.50 x 25mm Allen Bolts
- (10) M10 Flat Washers
- (10) M10 Locking Nuts

TOOLS REQUIRED

- 6mm Allen Socket
- 16mm Socket
- 17mm Wrench
- Ratchet
- 13/32" Drill Bit
- Drill
- Floor Jack
- Clamps

SKU # J179911

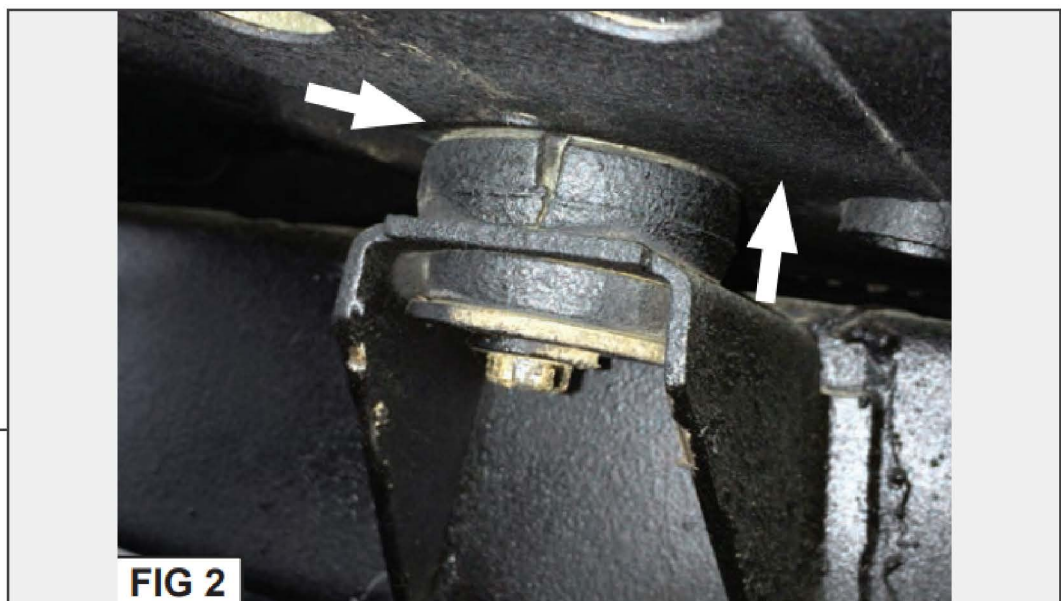
STEP 1



From underneath the vehicle, locate the two rear brackets on the frame where the body mounts to the frame. Loosen the bolts with a 16mm socket (there are three brackets on each side but only loosen the rear two).

Repeat this procedure on the other side of the vehicle shown in Fig 1.

STEP 2



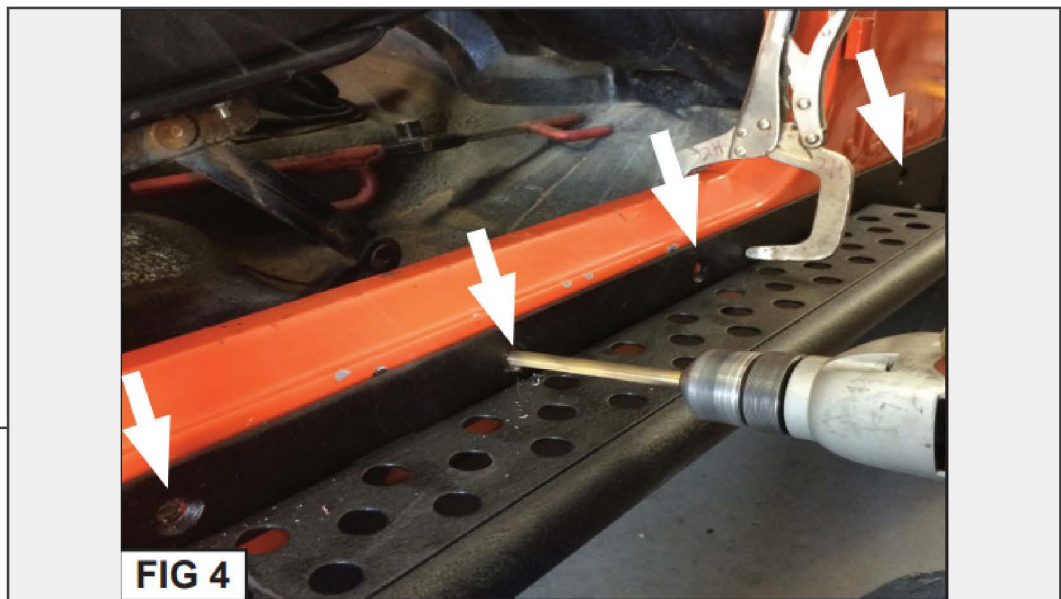
Place a floor jack underneath the body portion of the vehicle and lift the body from the frame to allow space between the body mount and the vehicle body, see Fig 2.

STEP 3



Locate the mounting plate of the rocker guard. Insert the (2) rocker guard mounting notches between the body of the vehicle and the previously loosened body mounts, see Fig 3.

STEP 4



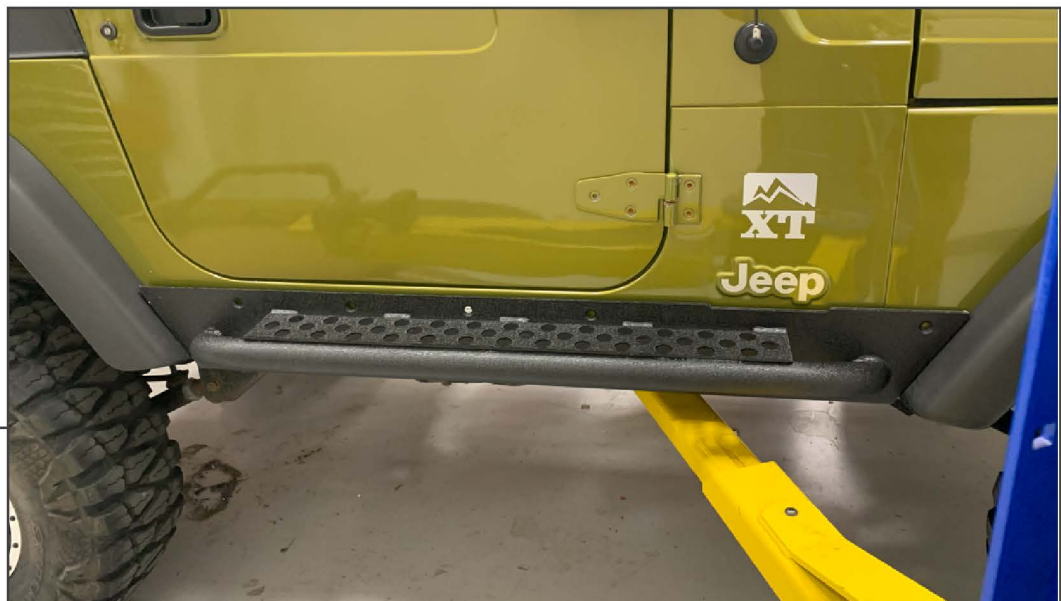
With the (2) rocker guard mounting notches in between the body and the body mounts, clamp the upper vertical inner edge of the rocker guard flush with the side of the vehicle. Locate the holes in the vertical edge of the rocker guard, take a 13/32" drill bit and drill a hole through the vehicle body where the holes are located shown in Fig 4.

STEP 5



Insert (5) M10x1.50 x 25mm bolts through the drilled holes. Secure the rocker guard to the vehicle by using (5) M10 flat washers and (5) M10 lock nuts through the back-side of the rocker guard. Tighten until secure.

STEP 6



Repeat steps 1-5 to the opposite side of the vehicle.

Installation is now complete.