

9-INCH LED ANGEL EYE HEADLIGHTS & LED FOG LIGHTS

(2018-2023+ WRANGLER JL)

(2020-2023+ GLADIATOR JT)

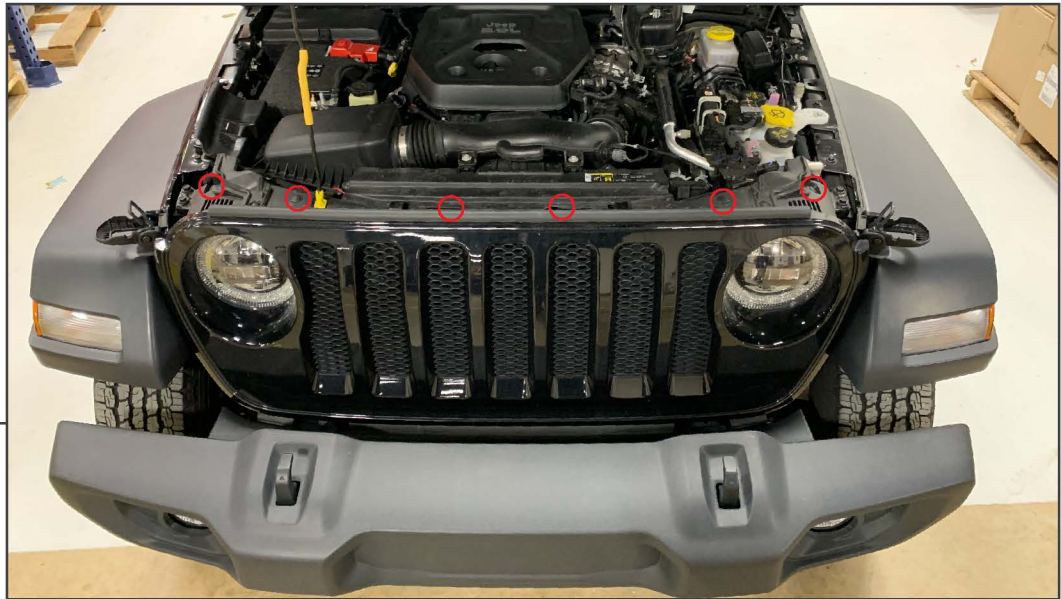
INSTALLATION INSTRUCTIONS

CONTENTS

- (2) Headlights
- (2) Fog Lights
- (6) M6x1.00 x 45mm Allen Bolts
- (6) M6 Flat Washers
- (6) Springs
- (4) Wiring Lead Extensions
- (4) Scotchlok Connectors

TOOLS REQUIRED

- Soft Pry Tool/Panel Removal Tool
- 7mm, 8mm, 10mm Sockets
- 5mm Allen Key/Socket
- Ratchet



STEP 1

Raise and support the hood to access the (6) push clips securing the grille to the vehicle. Remove the clips and then firmly pull the grille away from the vehicle.



STEP 2

Using a 10mm socket, remove the (3) bolts securing the headlight to the vehicle.

STEP 3



Pull the headlight away from the vehicle to access the wiring connection. Depress the connectors locking tab and pull the connector away from the light.

STEP 4

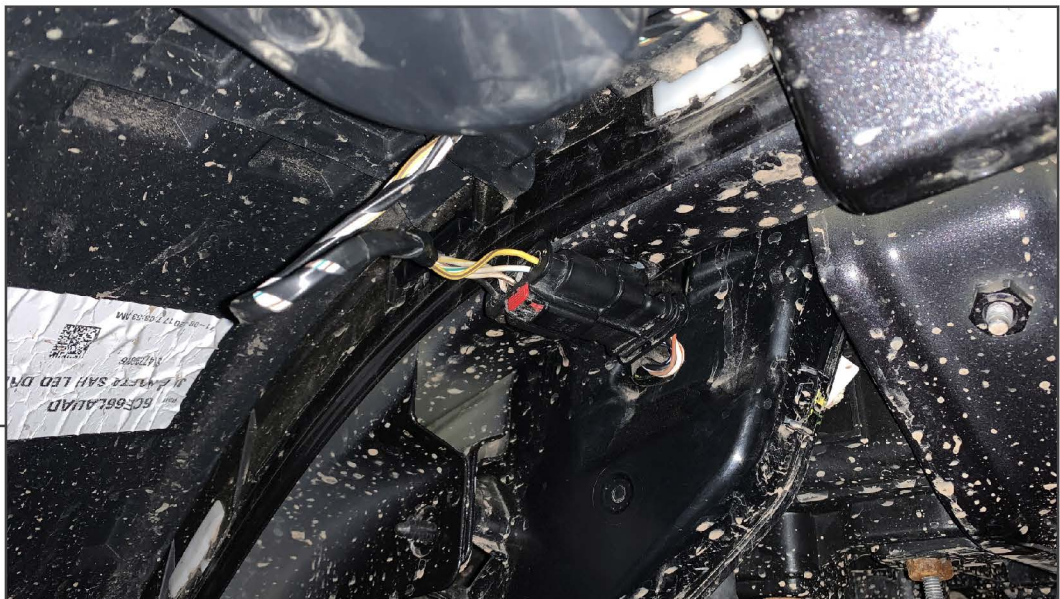


Remove the (2) 8mm bolts and (1) plastic push pin to gain access to the fender mounted running light.



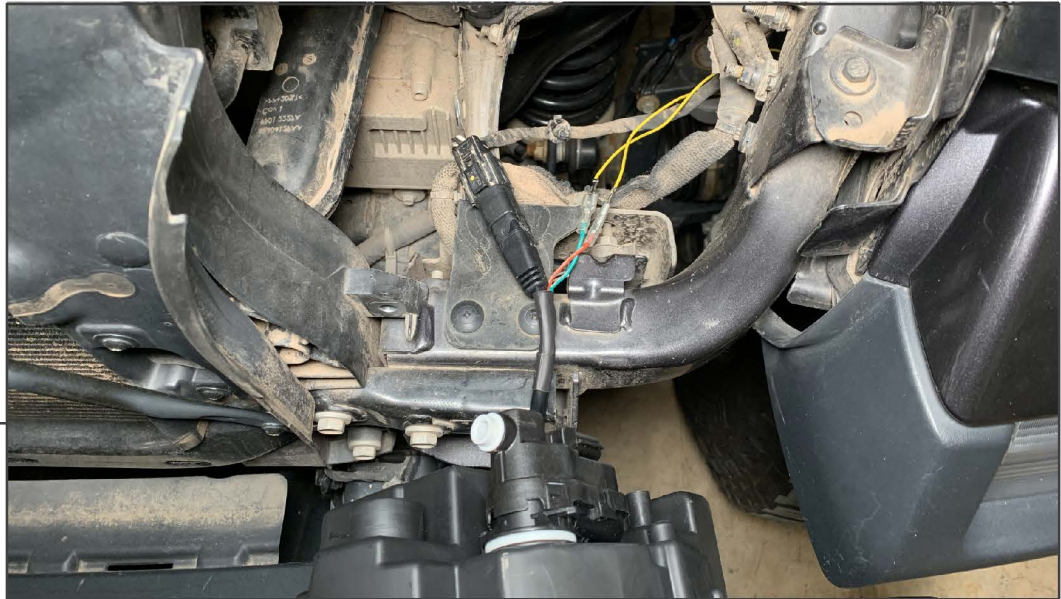
STEP 5

Turn the running light socket counter clock-wise and remove it from the housing. Using a test light, turn on the running lights and test for 12v+ power at the plug. On this vehicle the white/brown wire is the DRL wire. Connect the DRL wire lead (white) to the white/brown wire. Run the spade end of the wire to the headlight bucket.



STEP 6

Locate the turn signal wiring harness. Using a test light, turn on the turn signals and test for flashing 12v+ power at the plug. On this vehicle, the white/green (LH) / white/beige (RH) wires are the turn signal wires per side. Connect the turn signal wire lead (yellow) to the appropriate vehicle wire. Run the spade end of the wire to the headlight bucket.



STEP 7

Connect the (2) wire leads to the headlight wiring. Ensure to test functionality before fully connecting the wire leads.



STEP 8

Install the LED headlight onto the vehicle using (3) M6 x 45mm Allen bolts, (3) M6 flat washers, and (3) springs. Place the springs in between the headlight assembly and the vehicle headlight mounting holes. Tighten the bolts all the way at this time.



**STEP 9
(HEADLIGHT
ADJUSTMENT)**

Headlight Adjustment: The headlight mounting bolts are also the alignment bolts. Loosen the appropriate mounting bolt to allow the headlight aim in the appropriate direction. The springs will keep tension on the bolt to prevent movement during use. Adjust the headlight to the vehicle manufacturer's specified height/angle.



STEP 10

Repeat steps 1-9 to the remaining vehicle headlight. Re-install the vehicle grille using the original hardware.

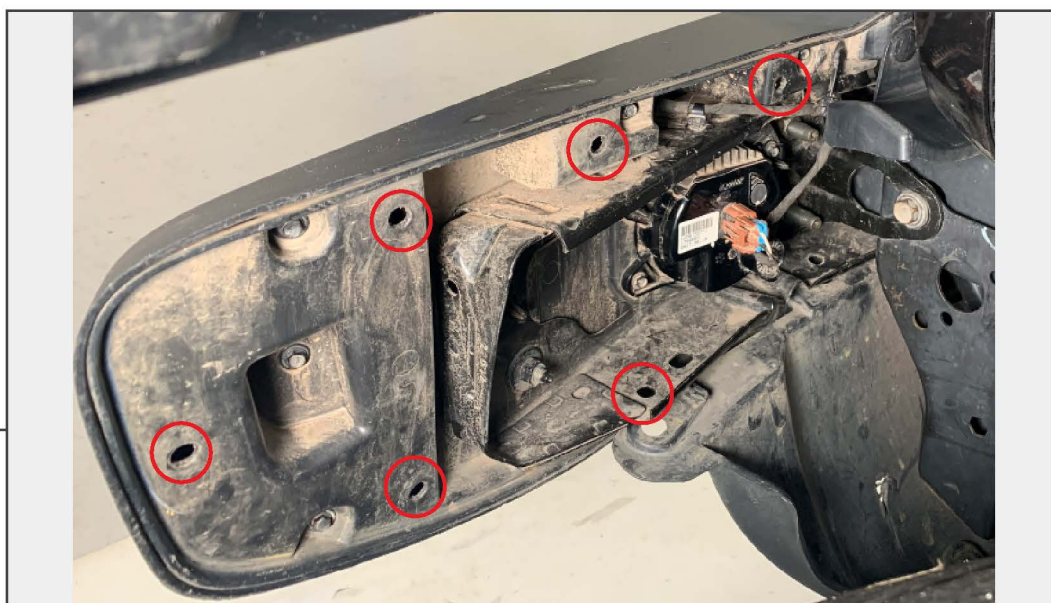
Headlight installation is now complete.





STEP 11
(FOG LIGHTS)

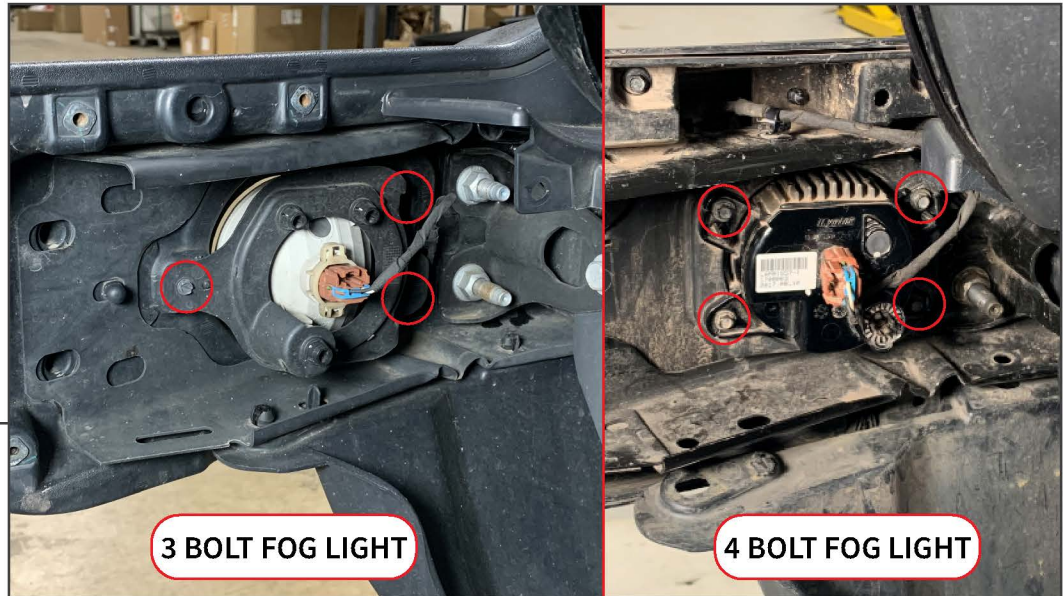
Remove (2) 8mm bolts from the plastic lower shield, then remove (8) plastic push clips. Remove the plastic lower shield from the vehicle.



STEP 12

Remove (6) plastic push clips from the fog light cover. Remove the cover. Unplug the connector from the fog light by pressing in the tab, then pulling the connector away from the light.

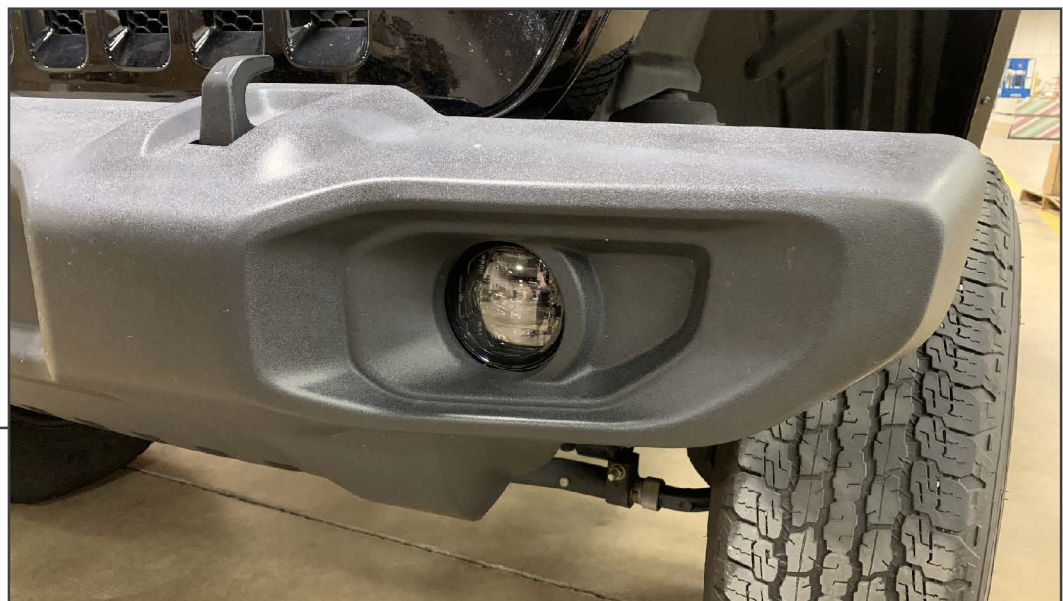
Repeat this procedure to the opposite side of the vehicle.



STEP 13

Depending on vehicle trim level, remove the (3) OR (4) 7mm fog light retaining bolts and remove the fog light from the vehicle. Install the new LED fog light with the appropriate mounting adapter to the vehicle bumper reusing the original hardware, and plug in the vehicle wiring harness.

Repeat this procedure to the opposite side of the vehicle.



STEP 14

Re-assemble the vehicle bumper following steps 11-12 in reverse order. Adjust the fog lights using the attached screw.

Installation is now complete.