



# BATALLION STUBBY FRONT BUMPER WITH JEEP LOGO

(2007-2018 WRANGLER JK)

---

## INSTALLATION INSTRUCTIONS

### CONTENTS

---

(1) Bumper	(8) M8x1.25 30mm Bolts
(1) Bumper Hoop	(12) M8 Flat Washers
(4) Nut Plates	(8) M8 Lock Washers
(2) "C" Nut Plates	(4) M8 Nuts
(2) Fog Light Brackets	(12) M4x0.7 12mm Bolts
(4) M12x1.75 35mm Bolts	(20) M4 Flat Washers
(8) M12 Flat Washers	(12) M4 Lock Washers
(4) M12 Nuts	(8) M4 Nuts
(8) M12 Lock Washers	(2) 3/4" D-Rings
(4) Plastic Retainers	

### TOOLS REQUIRED

---

Flat Head Screwdriver  
Phillips Head Screwdriver  
7, 13, 18mm Socket & Ratchet  
3 & 6mm Allen Key

SKU # J174551



## STEP 1

Using a flat head screwdriver, remove the (6) push pins securing the factory splash shield to the vehicle. (4) Across the front and (2) from behind. The splash guard will not be reused.



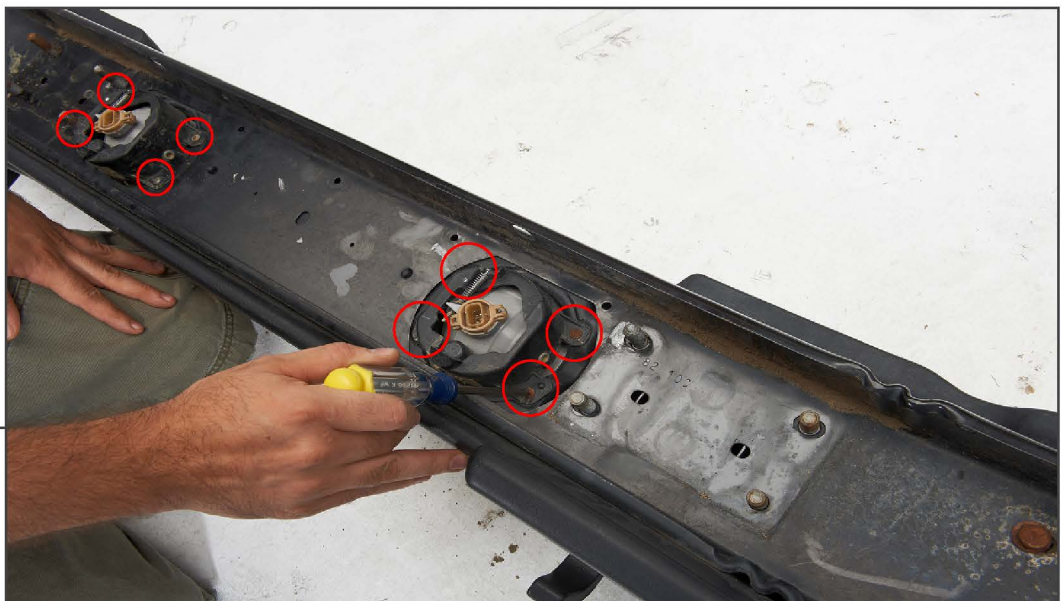
## STEP 2

Reach behind the bumper and unplug the wiring harness from the fog lights. Using a 18mm socket, remove the (8) nuts securing the bumper to the vehicle. Once the nuts are removed, carefully remove the bumper from the vehicle.



## STEP 3

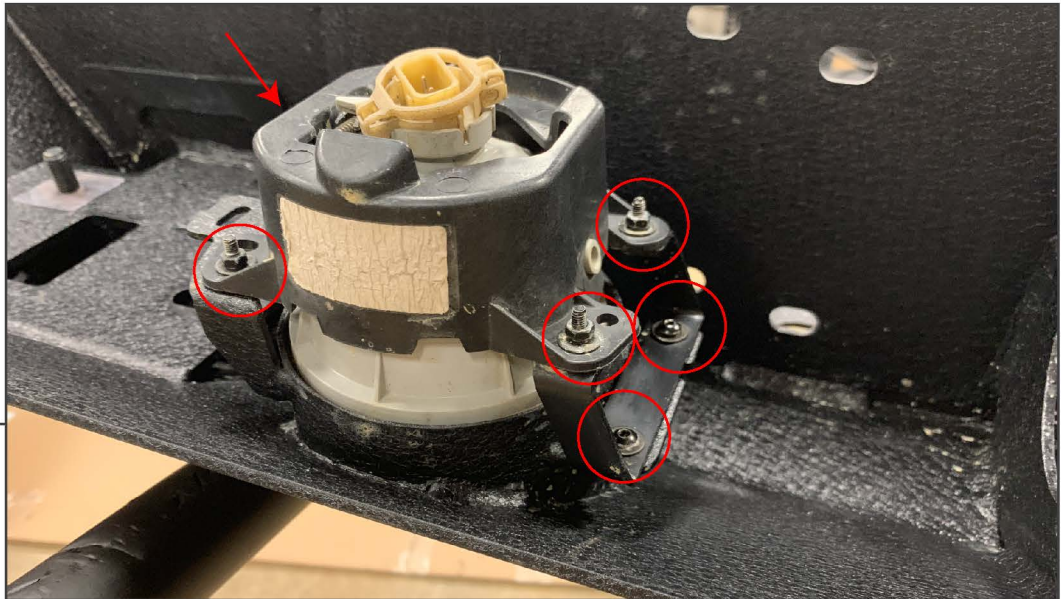
Using a flat head screwdriver, remove the (2) push pins securing the plastic filler panel to the vehicle. The filler panel will not be reused.



## STEP 4

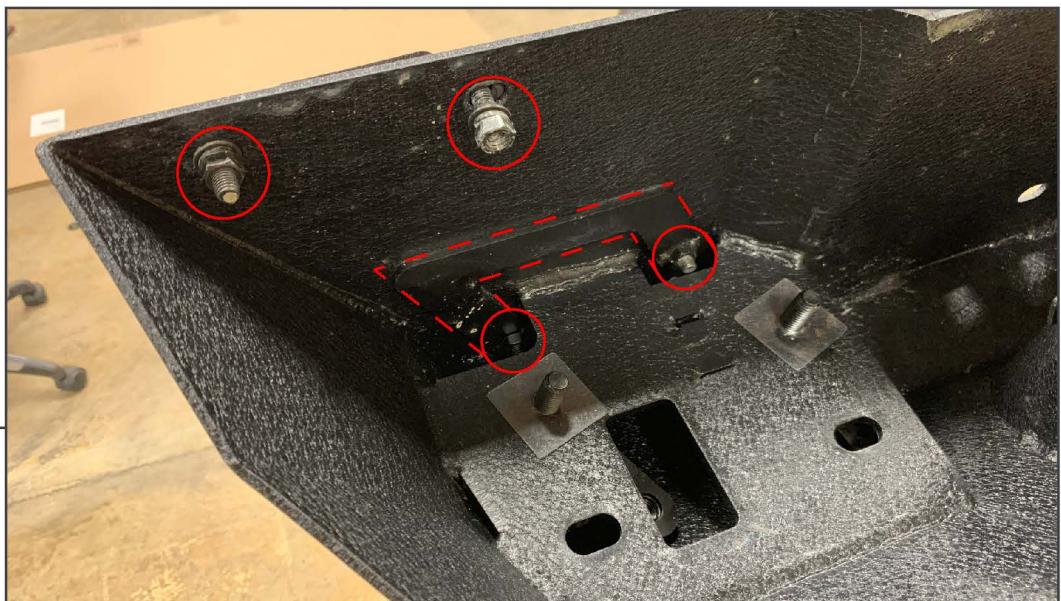
Using a Phillips head screwdriver, remove the screws securing the fog lights to the factory bumper.





## STEP 5

Using 7mm socket and 3mm Allen wrench, install the fog light brackets and factory fog lights to the bumper using the supplied M4 hardware. Each mounting location will use (1) M4 Bolt, (2) M4 Flat Washers, (1) M4 Lock Washer, and (1) M4 Nut.



## STEP 6

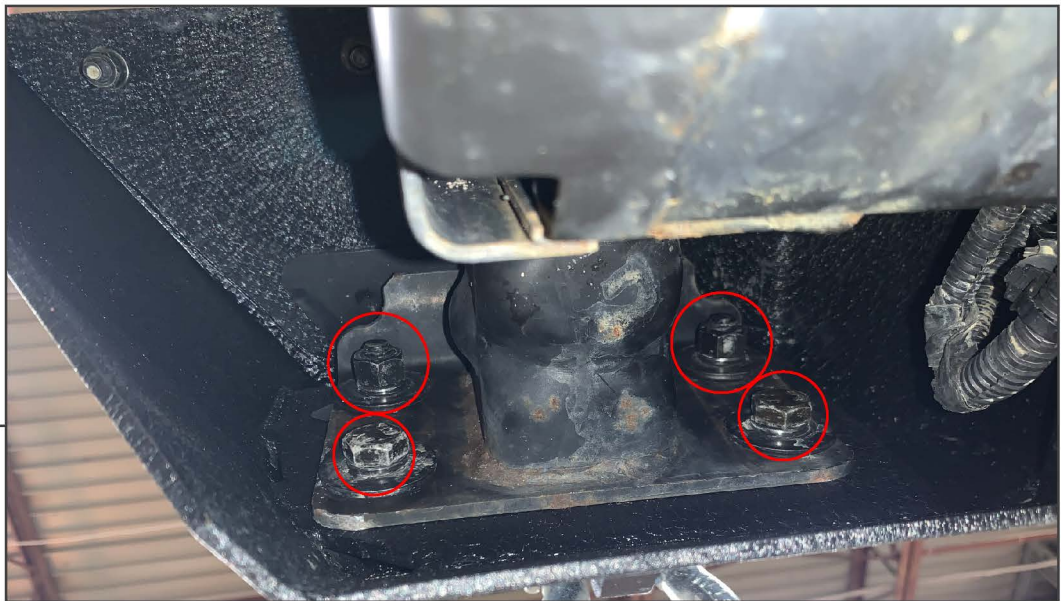
Install the bumper hoop using the supplied "C" nut plates and M8 hardware. Nut plate locations will receive (1) M8 Bolt, (1) M8 Lock Washers, and (1) M8 Flat washer. The rear most mounting locations will use (1) M8 Bolt, (1) M8 Lock Washers, (2) M8 Flat washers, and (1) M8 Nut. Tighten using a 13mm socket and 6mm Allen Key.

## STEP 7



Install the supplied nut plates in front of the bumper mounting pad. Install the plastic retainers over the studs to hold them in place during installation.

## STEP 8



With a helper, align the bumper with the frame and install using the supplied M12 hardware. The studs will receive (1) M12 Flat Washer, (1) M12 Lock Washer, and (1) M12 Nut. The nut locations will receive (1) M12 Flat Washer, (1) M12 Lock Washer, and (1) M12 Bolt.





---

## STEP 9

Plug in the fog lights and install the supplied D-Rings to complete the installation.

Clean the bumper using automotive grade soap and water.