



TRAIL FORCE HD REAR BUMPER W/ TIRE CARRIER

(2007-2018 WRANGLER JK)

INSTALLATION INSTRUCTIONS

CONTENTS

- | | |
|-------------------------------|-----------------------|
| (1) Rear Bumper | (6) M12 Lock Nuts |
| (1) Tire Carrier Arm | (4) M12 Nuts |
| (2) Frame Rail Brackets | (3) M10 x 40mm Bolts |
| (1) Latch Assembly | (2) M10 x 65mm Bolts |
| (1) Latch Bracket | (1) M10 x 25mm Screw |
| (6) Latch Bracket Spacers | (11) M10 Flat Washers |
| (1) Tire Carrier Base | (1) M10 Lock Washer |
| (1) Tire Carrier Base Bracket | (5) M10 Lock Nuts |
| (2) D-Rings | (1) Zerk Fitting |
| (4) M12 x 120mm Bolts | (1) Tire Carrier Cap |
| (2) M12 x 80mm Bolts | (2) Washers |
| (4) M12 x 35mm Bolts | (1) Rubber Grommet |
| (1) M12 x 30mm Bolt | |
| (24) M12 Flat Washers | |
| (8) M12 Lock Washers | |

TOOLS REQUIRED

- 10mm, and 18mm Sockets
- T55 Torx Bit
- Ratchet
- Allen Wrenches
- Clean Towel
- Cleaning Solution

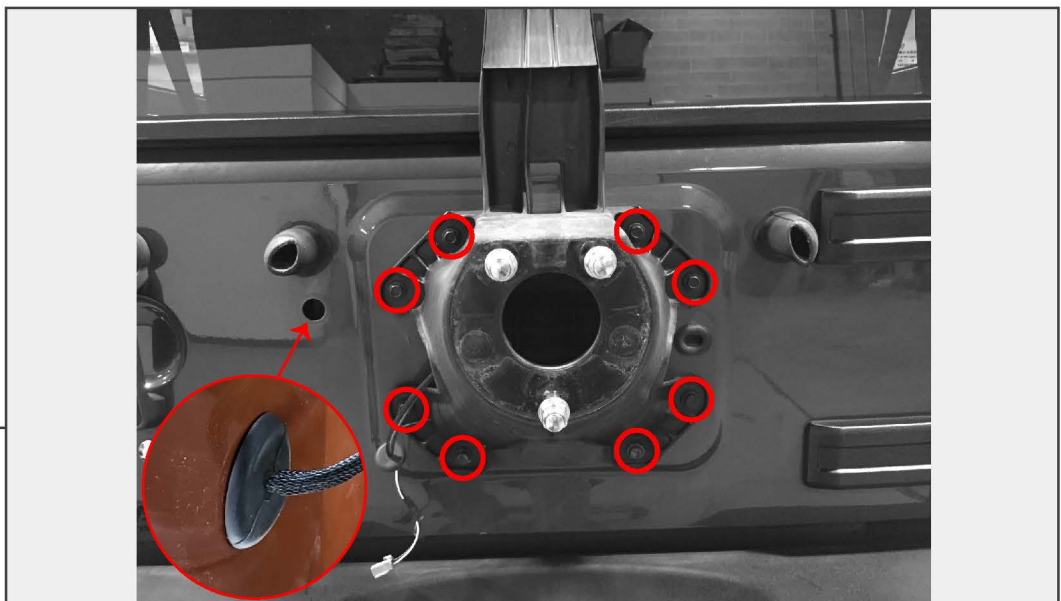
SKU: J174538

STEP 1



Open the tailgate and remove the vent cover with a trim panel removal tool. Disconnect the brake light wiring harness and reinstall the vent cover.

STEP 2

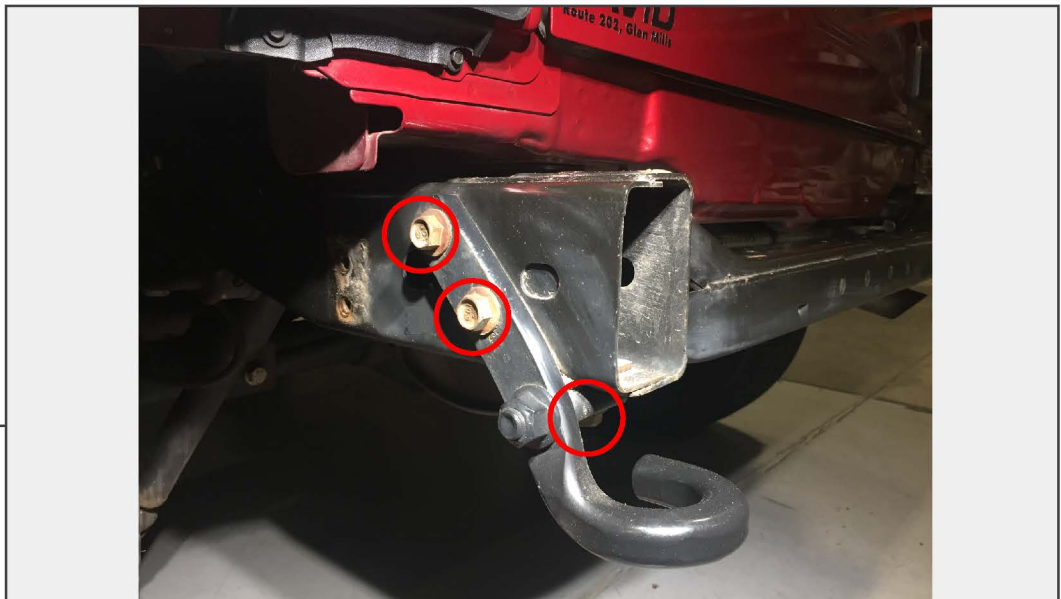


Remove the spare tire. Remove the 3rd brake light wiring grommet, and remove the harness and plug from the tailgate. Remove the (8) 13mm bolts holding the factory tire carrier to the vehicle.



STEP 3

Locate, and remove the (2) 15mm bolts on each side securing the bumper to the frame rail.
Remove bumper.



STEP 4

Remove the (3) 15mm bolts securing the tow hook to the driver side frame rail.



STEP 5

Insert the (2) frame rail brackets into the frame rails, be sure that the holes from the frame rail line up with the bracket holes.



STEP 6

Install the new Barricade bumper to frame rails using the (2) M12 x 40mm bolts, flat washers, and lock washers. Torque to 40 ft - lbs.

STEP 7



From under the vehicle, secure the center of the bumper using the (4) M12 x 120mm bolts, flat washers, lock washers, and nuts. Torque to 40 ft - lbs.

STEP 8



Install the carrier arm to the bumper by inserting (1) plastic bushing onto the post. Then slide the carrier arm onto the post and secure the carrier arm by using the (2) carrier washers, (1) cap, (1) M10x20mm bolt, and (1) M10 lock washer. Make sure to grease the post before installing carrier.

STEP 9



Gently thread the zerk fitting into the tire carrier arm using a 3/8 wrench. **DO NOT OVERTIGHTEN.**

STEP 10



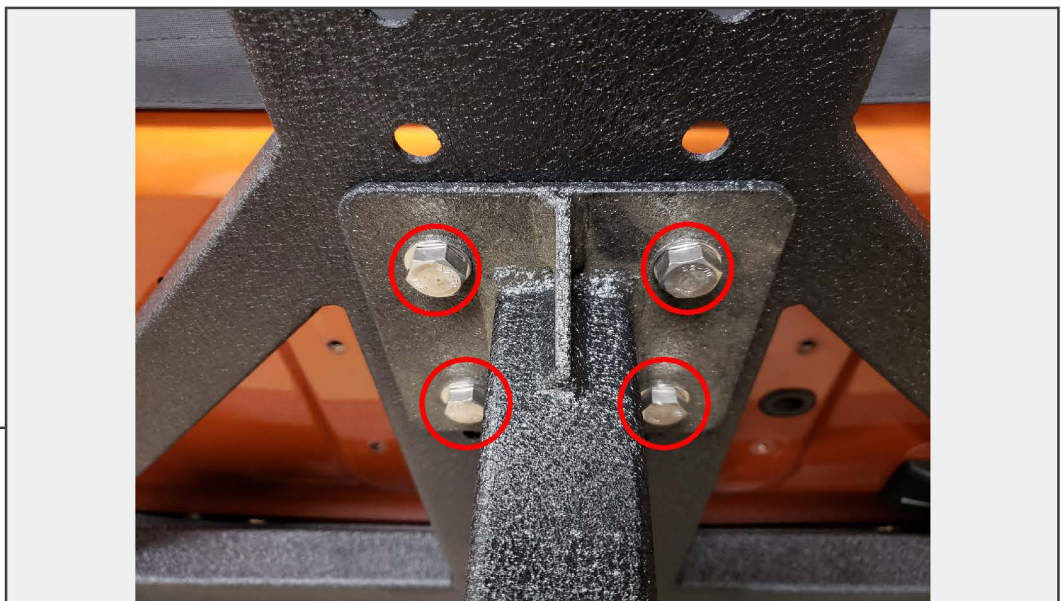
Install the latch to the carrier arm by using (2) M10 x 65mm bolts, (4) flat washers, and (2) M10 lock nuts.

STEP 11



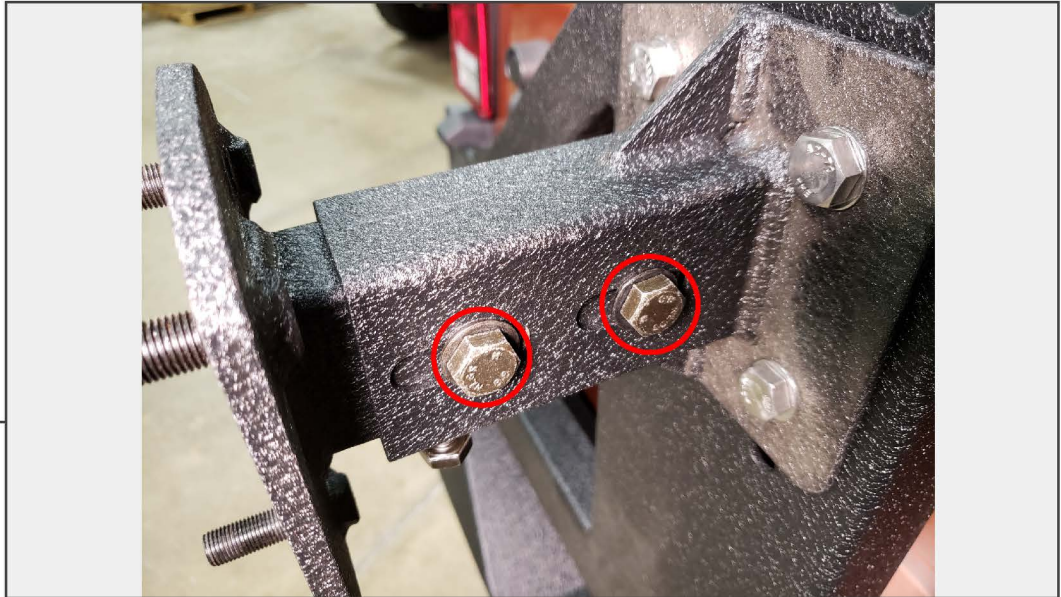
Install the latch bracket to the rear bumper by using the (3) M10 x 40mm bolts, (6) flat washers, and (3) lock nuts. Do not fully tighten, refer to last page for final adjustment.

STEP 12



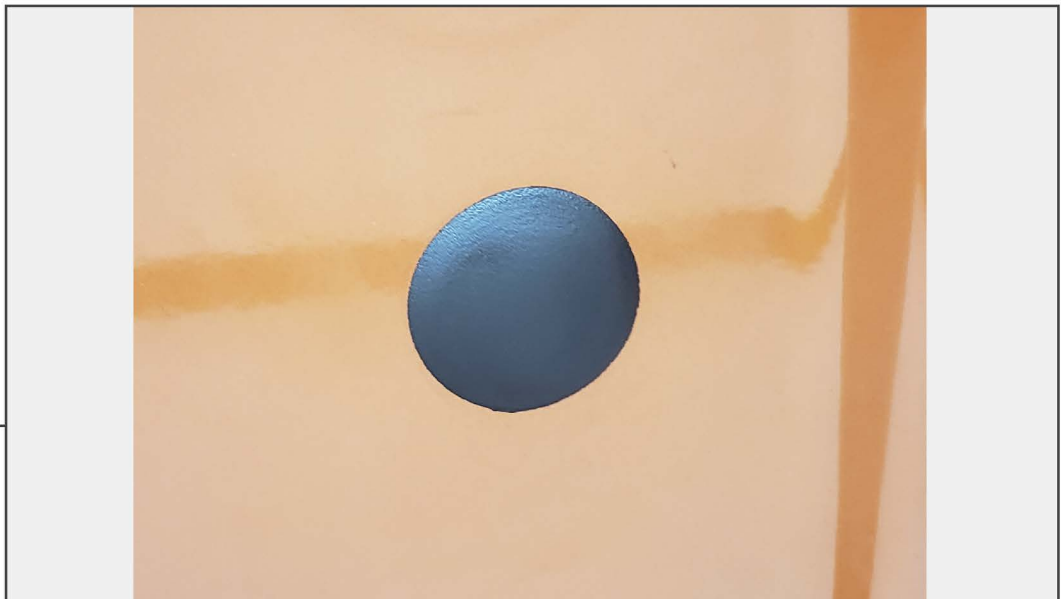
Install the (1) Tire Carrier Base to the tire carrier by using the (4) M12 x 35mm bolts, (8) flat washers, and (4) lock nuts. Height will be determined by size of spare tire.

STEP 13



Install the (1) Tire Carrier Mounting Hub to the tire carrier base by using (2) M10 x 120mm bolts, (4) flat washers, and (2) lock nuts. Measure the backspacing of your spare tire by placing a straight edge across the tire. Measure from the mounting hub to the straight edge. Subtract a half inch from the previous measurement, and set the carrier to the new measurement. This insures the tire is against the carrier.

STEP 14



Insert the (1) rubber grommet into the third brake light harness location, removed in Step 2.



STEP 15

Insert the (2), optional, D-Rings. Installation is now complete.

If tire carrier is not latching properly, spacers may be required depending on spare tire weight. If spacers are required, remove bracket from Step 10, and insert desired amount spacers between the bumper and bracket to achieve proper latch height. Reinstall bracket.