



FRONT AND REAR CALIPER COVERS

(2018+ WRANGLER JL - SPORT MODEL ONLY)

INSTALLATION INSTRUCTIONS

CONTENTS

- (1) LH Front Caliper Cover
- (1) RH Front Caliper Cover
- (1) LH Rear Caliper Cover
- (1) RH Rear Caliper Cover
- (1) Allen Key
- (1) Wrench
- (1) Extra Allen Bolt & Lock Nut

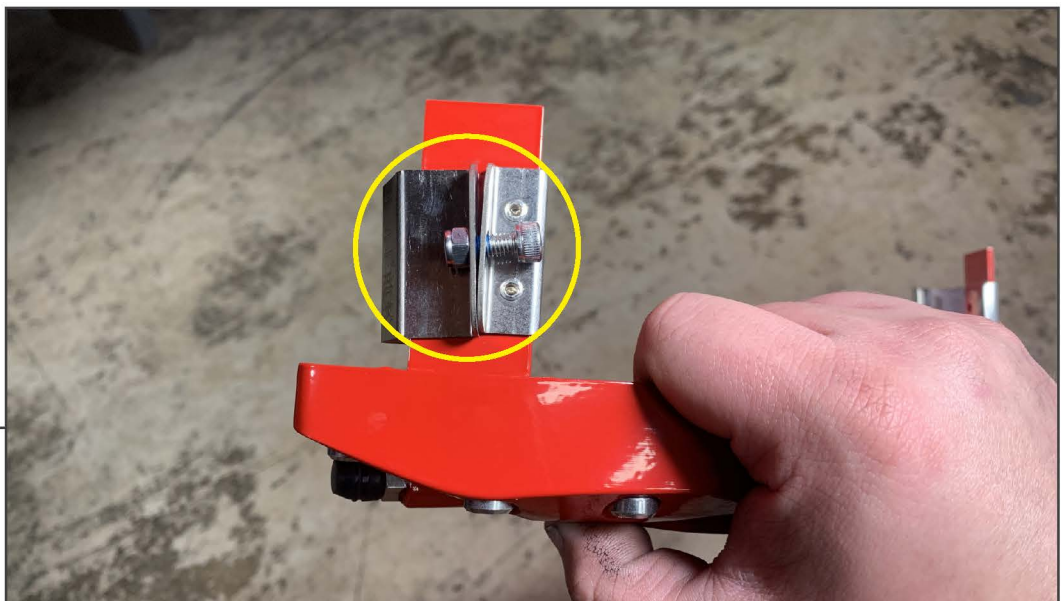
TOOLS REQUIRED

- 8mm Wrench (Provided)
- Allen Key (Provided)
- Floor Jack & Jack Stands
- Lug Nut Wrench
- Rubber Mallet

SKU # J167602

**STEP 1**

Lift and support the vehicle using a floor jack and jack stands. Remove the wheel from the vehicle to expose the brake caliper.

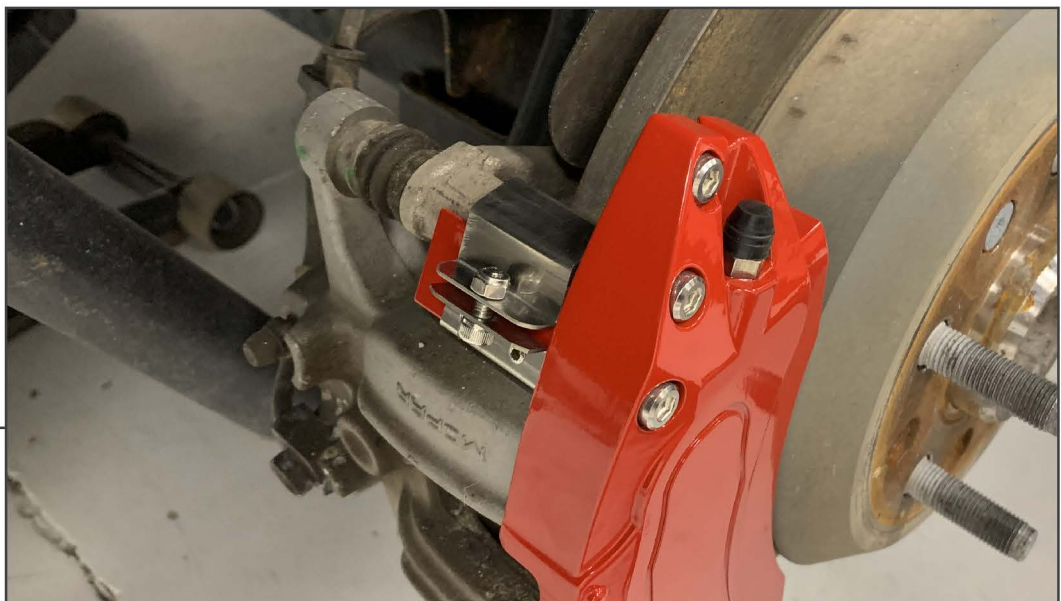
**STEP 2**

Prepare the caliper cover for installation by removing the nut and bolt from the top to separate the clamp. Set the removed bracket and hardware aside for installation later.

STEP 3

Place the lower caliper cover bracket around lower caliper bracket. Using a rubber mallet, lightly tap the caliper cover upwards to ensure proper fitment for the upper bracket.

Note: Ensure the bleeder on the caliper cover is towards the top.

STEP 4

Using the previously removed bracket and hardware, secure the top of the caliper cover to the vehicle caliper bracket. Tighten the hardware until the cover is secure.



STEP 5

Repeat steps 1-4 to the remaining vehicle brake calipers.

Installation is now complete.