



9” LED ANGEL EYE HEADLIGHTS

(2018+ WRANGLER JL)
(2020+ GLADIATOR JT)

INSTALLATION INSTRUCTIONS

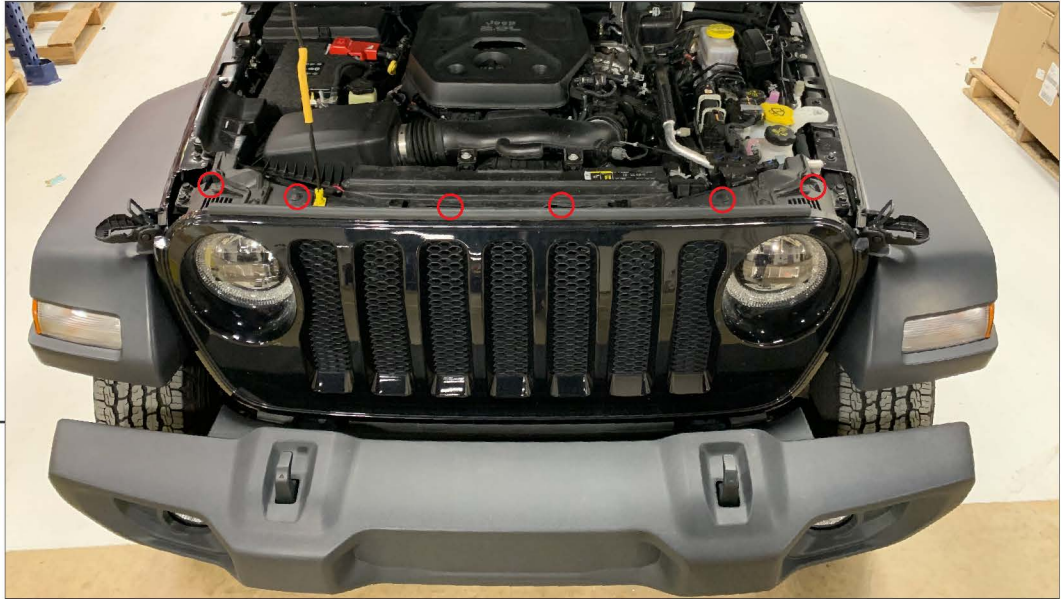
CONTENTS

(2) Headlights with Mounting Brackets
(4) Wiring Lead Extensions
(4) Scotchlok Connectors

TOOLS REQUIRED

Soft Pry Tool/Panel Removal Tool
8mm, 10mm Sockets
Ratchet

SKU: J167045



STEP 1

Raise and support the hood to access the (6) push clips securing the grille to the vehicle. Remove the clips and then firmly pull the grille away from the vehicle.



STEP 2

Using a 10mm socket, remove the (3) bolts securing the headlight to the vehicle.



STEP 3

Pull the headlight away from the vehicle to access the wiring connection. Depress the connectors locking tab and pull the connector away from the light.



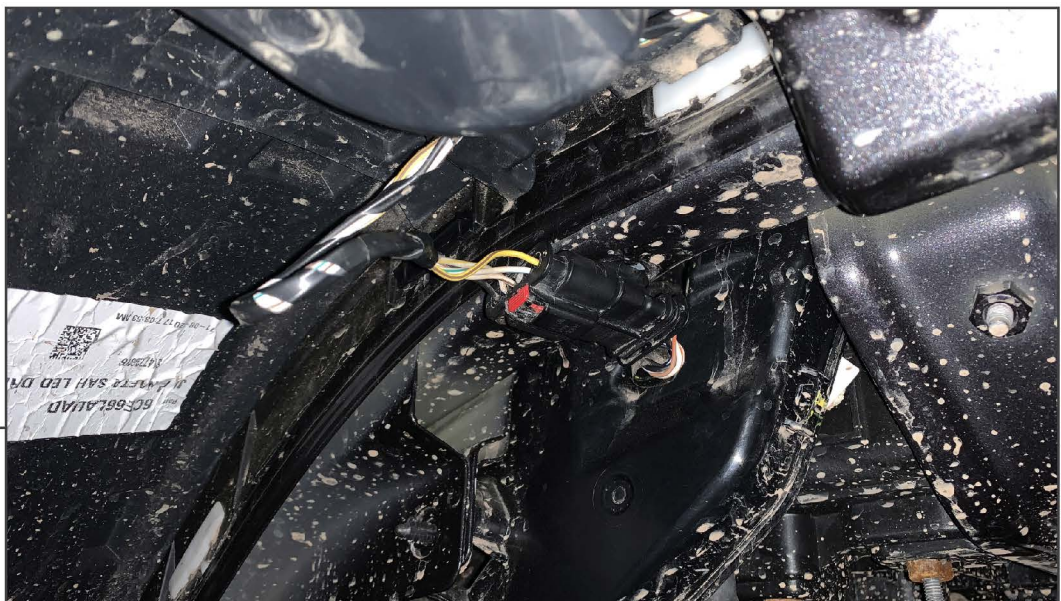
STEP 4

Remove the (2) 8mm bolts and (1) plastic push pin to gain access to the fender mounted running light.



STEP 5

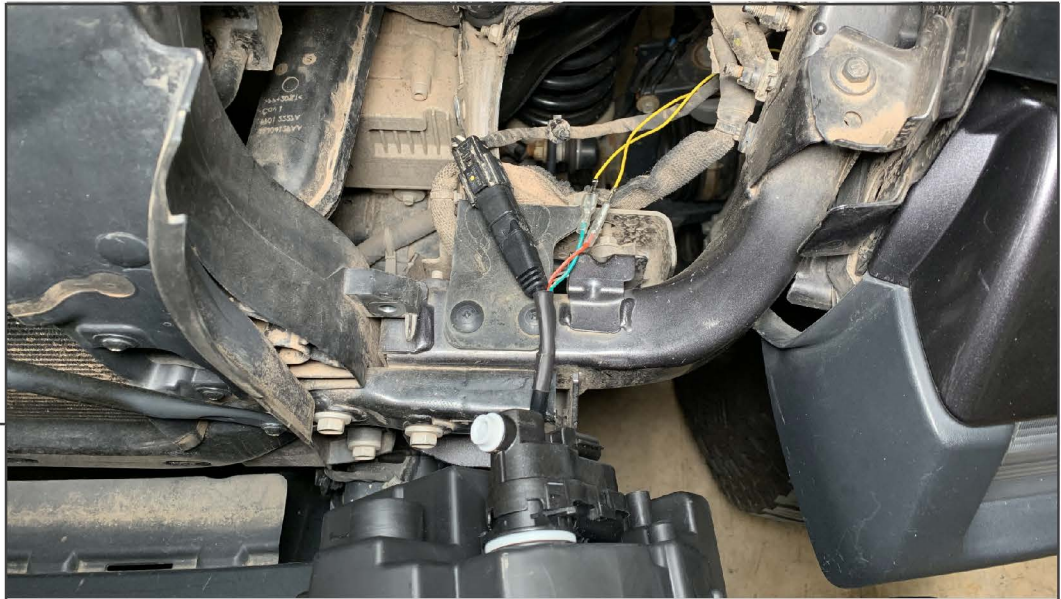
Turn the running light socket counter clock-wise and remove it from the housing. Using a test light, turn on the running lights and test for 12v+ power at the plug. On this vehicle the white/brown wire is the DRL wire. Connect the DRL wire lead to the white/brown wire. Run the spade end of the wire to the headlight bucket.



STEP 6

Locate the turn signal wiring harness. Using a test light, turn on the turn signals and test for flashing 12v+ power at the plug. On this vehicle, the white/green (LH) / white/beige (RH) wires are the turn signal wires per side. Connect the turn signal wire lead to the appropriate vehicle wire. Run the spade end of the wire to the headlight bucket.

STEP 7

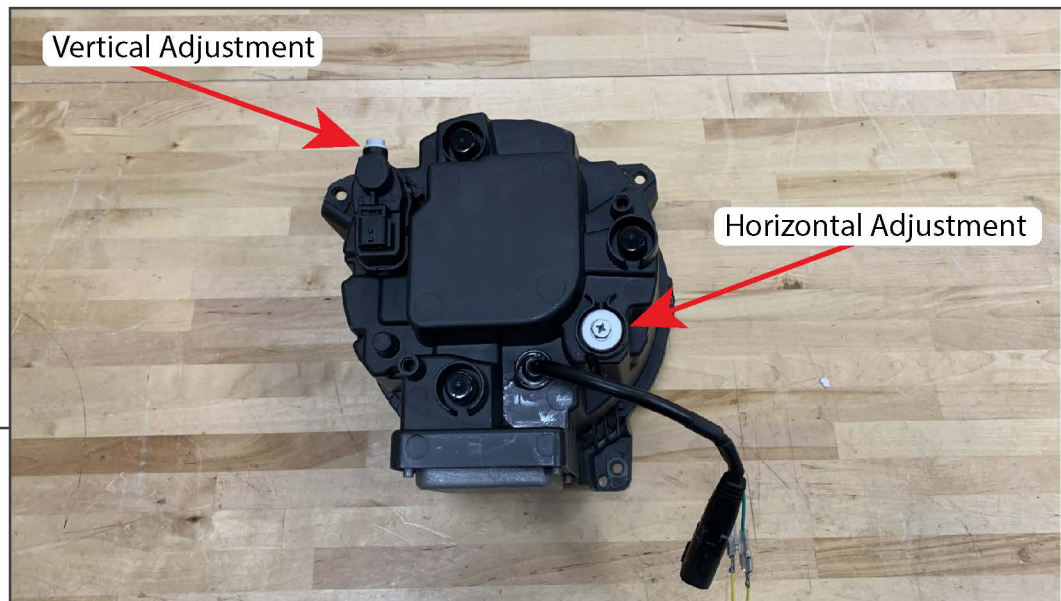


Connect the (2) wire leads to the headlight wiring. Ensure to test functionality before fully connecting the wire leads.

STEP 8



Install the LED headlight onto the vehicle using the factory hardware. Test the lights for functionality and alignment.



STEP 9

Follow the manufacturers recommendation for adjusting/aligning the headlights. Use the Allen/Phillips screws on the back of the headlight bracket to adjust the light as needed. Plug in the electronic vertical headlight adjuster if applicable. Once the lights are adjusted, follow Steps 1-4 in reverse order to complete the installation.