



# 13-Inch Trail Antenna

(2007-2018 WRANGLER JK)

---

## INSTALLATION INSTRUCTIONS

### CONTENTS

---

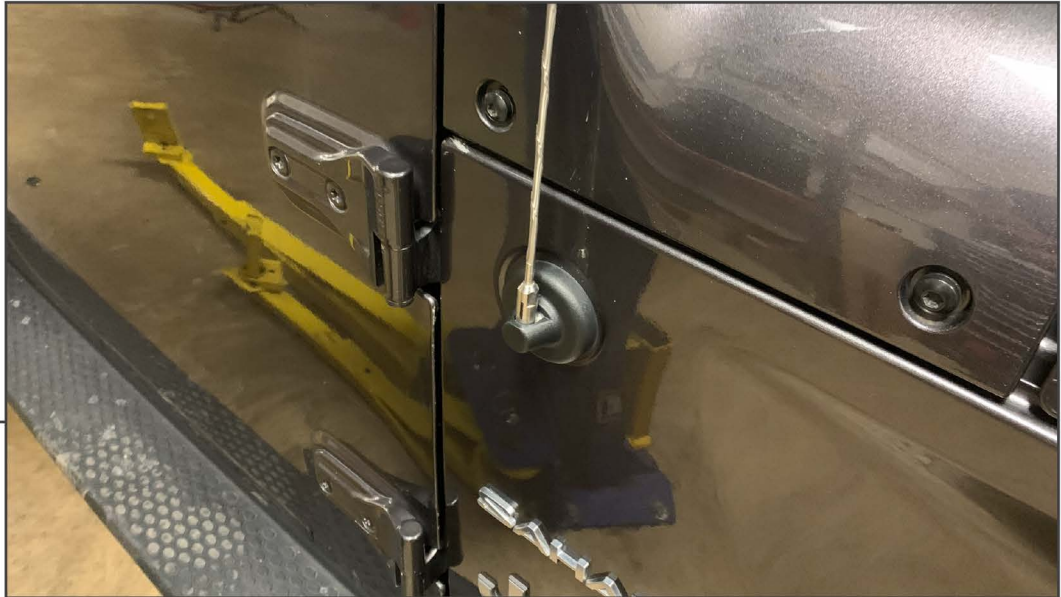
(1) Antenna

### TOOLS REQUIRED

---

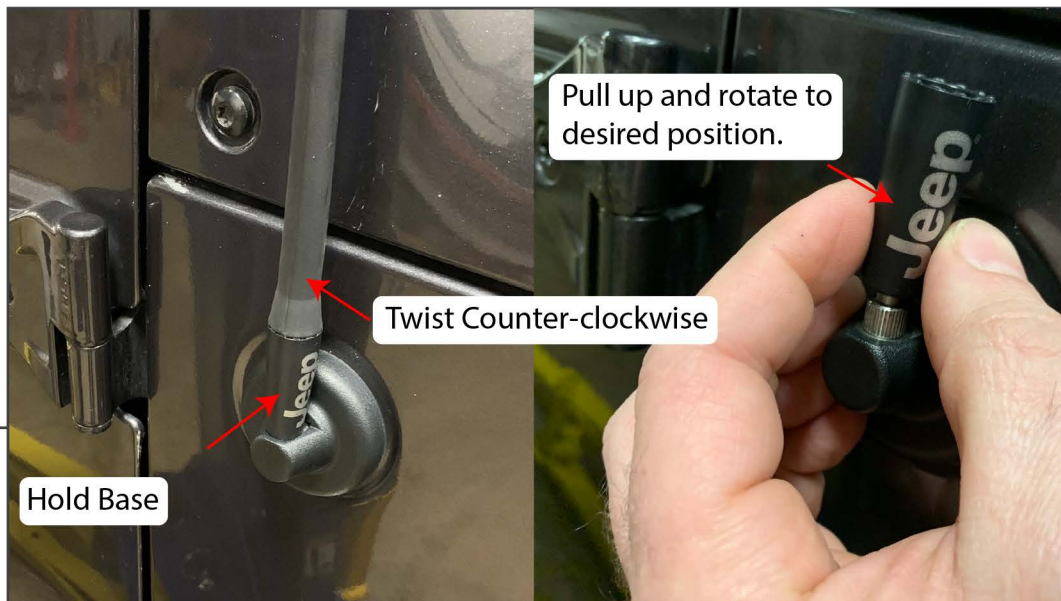
Small Adjustable Wrench

## STEP 1



Using a small adjustable wrench, rotate the antenna counter-clock wise to remove it from the vehicle.

## STEP 2



Thread the new antenna into the vehicle. If the Jeep logo is not facing the out, hold the logo portion of the antenna and rotate the upper portion of the antenna counter-clock wise and remove. Once the upper portion of the antenna removed, pull up on the logo portion of the antenna and rotate it to face out.



---

## STEP 3

Thread the upper portion of the antenna back onto the vehicle to complete the installation.