



STEERING SHAFT RISER BRACKET

(1997-2006 WRANGLER TJ - WITH 1" BODY LIFT)

INSTALLATION INSTRUCTIONS

CONTENTS

- (1) Steering Shaft Riser Bracket
- (2) M6 Bolts

TOOLS REQUIRED

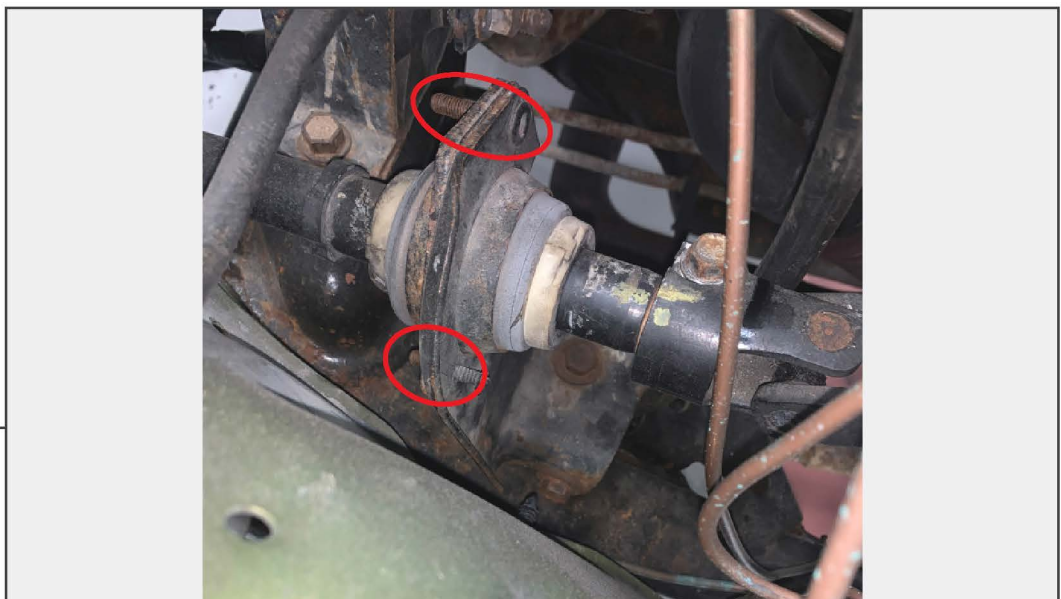
- 10mm, 13mm, 15mm Sockets
- Ratchet
- Pry Bar
- Spray Lubricant

STEP 1



Locate the vehicle steering shaft. Loosen, but do not fully remove (2) 15mm bolts from the base of the bracket.

STEP 2



Remove (2) 10mm nuts from the steering shaft bracket studs.

**STEP 3**

Loosen (1) 13mm bolt securing the steering shaft to the intermediate shaft. Separate the two steering shafts. Remove the (2) 15mm bolts from Step 1, and remove the original steering shaft bracket from the vehicle.

**STEP 4**

Place the new steering shaft bracket to the vehicle. Loosely secure the bracket to the vehicle reusing the original (2) 15mm bolts.

STEP 5



Insert the intermediate shaft to the steering shaft, secure using the original (1) 13mm bolt.

STEP 6



Secure the bearing to the bracket using (2) M6 bolts and the original (2) 10mm nuts. Tighten all hardware until secure.

Installation is now complete.