



COWL ARMOR

(1997-2006 WRANGLER TJ)

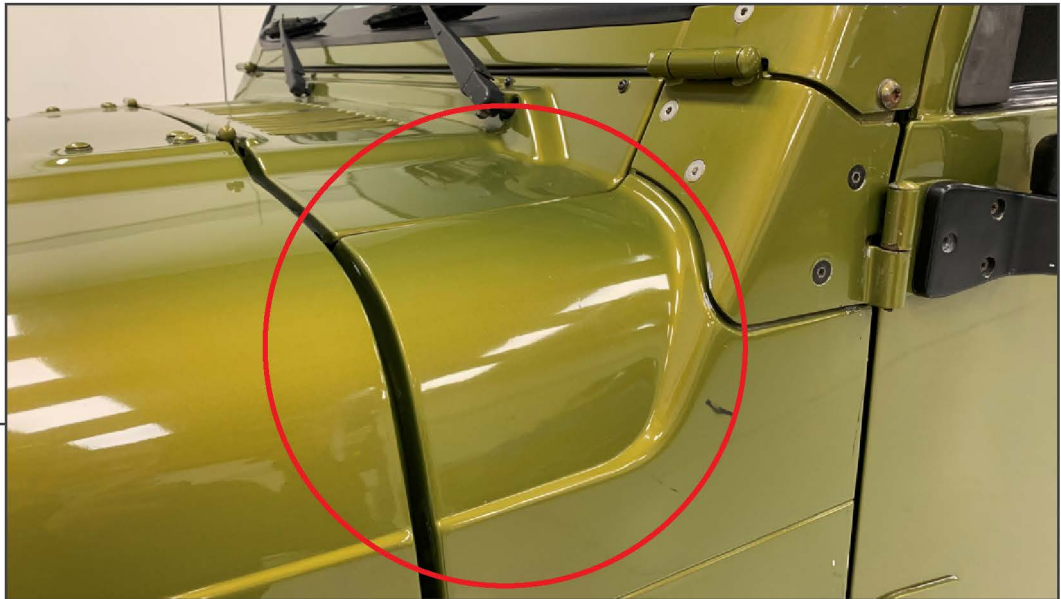
INSTALLATION INSTRUCTIONS

CONTENTS

- (1) LH Cowl Armor
- (1) RH Cowl Armor

TOOLS REQUIRED

- Isopropyl Alcohol
- Microfiber Cloth



STEP 1

Clean the vehicle using isopropyl alcohol and a microfiber cloth. Align the cowl armor to the vehicle to familiarize fitment.



STEP 2

Peel the red tape backing from the armor, and firmly press the armor to the vehicle.

Repeat steps 1-2 to the opposite side of the vehicle. Installation is now complete.