



# COWL ARMOR

(1997-2006 WRANGLER TJ)

---

## INSTALLATION INSTRUCTIONS

### CONTENTS

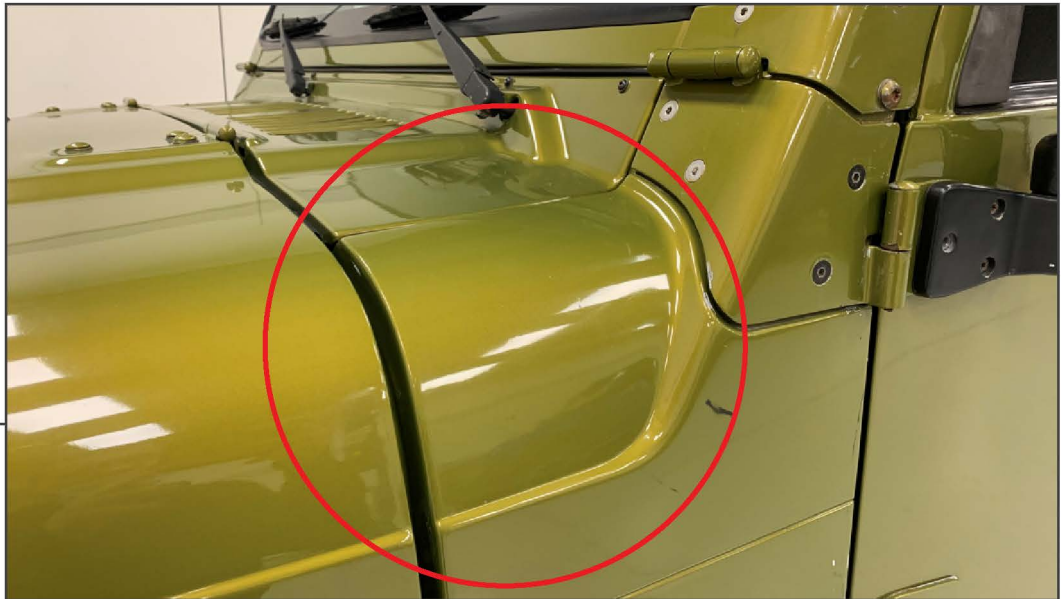
---

- (1) LH Cowl Armor
- (1) RH Cowl Armor

### TOOLS REQUIRED

---

- Isopropyl Alcohol
- Microfiber Cloth



**STEP 1**

Clean the vehicle using isopropyl alcohol and a microfiber cloth. Align the cowl armor to the vehicle to familiarize fitment.



**STEP 2**

Peel the red tape backing from the armor, and firmly press the armor to the vehicle.

Repeat steps 1-2 to the opposite side of the vehicle. Installation is now complete.