



HD REAR BUMPER WITH LED JEEP LOGO BACKLIGHT

(2007-2018 WRANGLER JK)

INSTALLATION INSTRUCTIONS

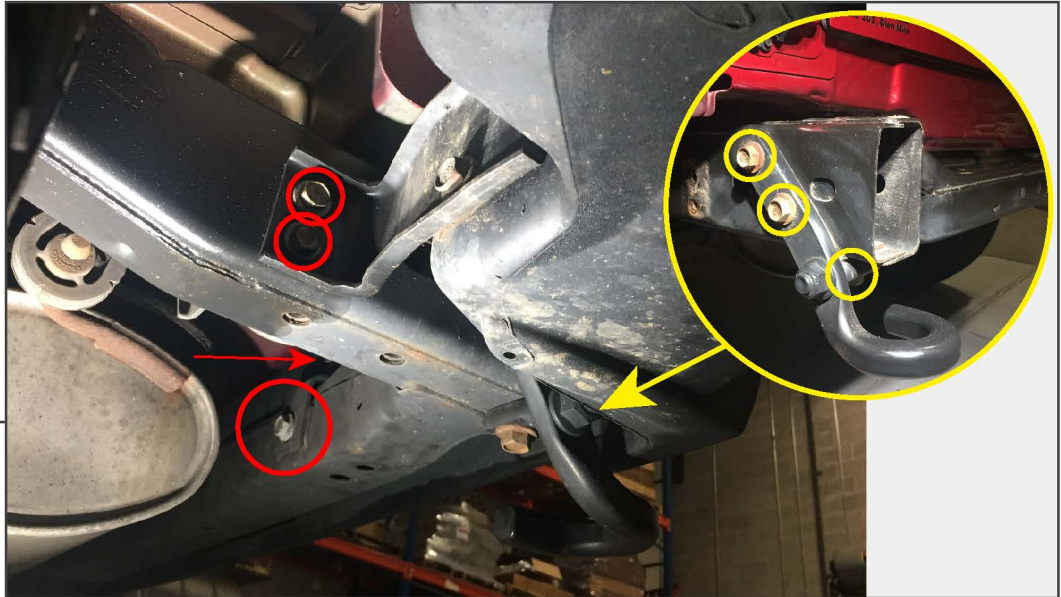
CONTENTS

- (1) Rear Bumper
- (1) Backlight w/ Wiring Harness
- (2) 3/4" D-Rings
- (1) Receiver Hitch Assembly
- (2) Frame Rail Nut Plates
- (4) M12x1.75 x 40mm Bolts
- (4) M12x1.75 x 120mm Bolts
- (8) M12 Lock Washers
- (12) M12 Flat Washers
- (4) M12 Nuts
- (2) M6x1.00 x 20mm Allen Bolts
- (2) M6 Plastic Flat Washers
- (2) M6 Flange Nuts
- (1) 5mm Allen Key

TOOLS REQUIRED

- 10mm, 13mm, 15mm, 16mm,
19mm Sockets
- Ratchet
- Wire Strippers/Cutters (Optional)
- Drill and 1/4" Drill Bit (Optional)
- 4mm Allen Key (Provided)

SKU # J164981



STEP 1

Remove (4) 15mm bolts from the frame rail on each side of the vehicle. Remove the rear bumper from the vehicle. Remove the vehicle tow hook by removing the (3) 15mm bolts through the driver's side frame rail.



STEP 2

Place (1) frame rail nut plate into the frame rail on each side of the vehicle. Ensure the threaded nuts align with the frame rail holes.



STEP 3

Install the hitch receiver to the rear frame rails using (4) M12x120mm bolts, (4) M12 lock washers, (8) M12 flat washers, and (4) M12 nuts. The bolts install through (4) existing bolt holes in the frame rail.



STEP 4

Install the LED backlight into the bumper using (2) M6 x 20mm Allen bolts, (2) M6 plastic flat washers, and (2) M6 flange nuts.



STEP 5 (WIRING OPTION 1)

Wiring Option 1 - Standalone Harness: Route the terminal ends of the harness towards the vehicle battery. Then, neatly route the backlight connector towards the rear of the vehicle along the vehicle frame. Plug in the backlight connector to the backlight.



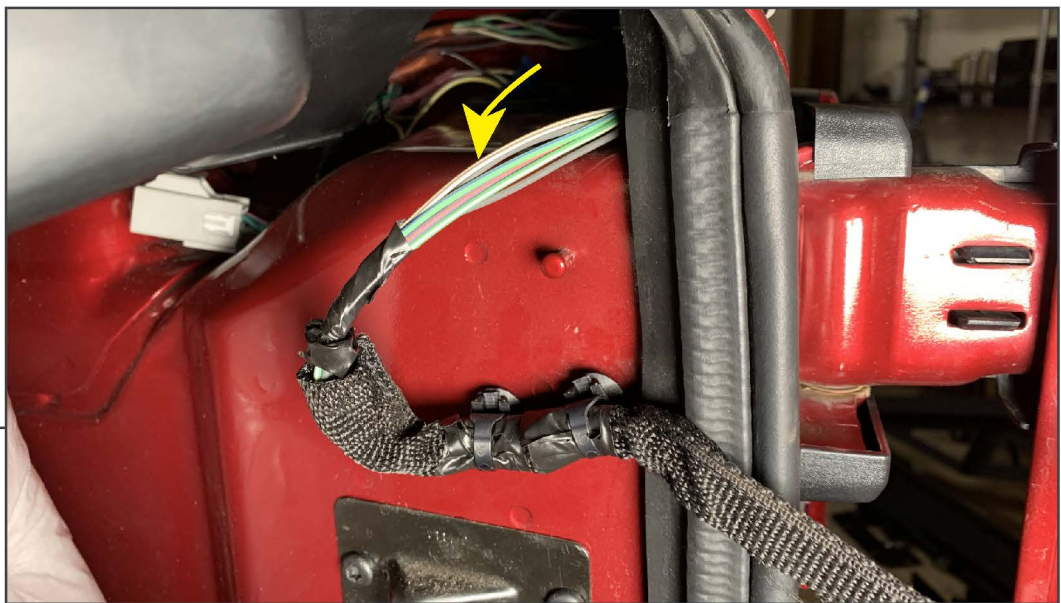
STEP 6 (WIRING OPTION 1)

Wiring Option 1 - Standalone Harness (cont.): Route the switch harness across the firewall towards the Driver's side of the vehicle. From the interior, feed the switch connector through a suitable firewall grommet. Plug in the switch, and route to a suitable location inside the vehicle. Clean the desired switch location using isopropyl alcohol and a microfiber cloth, and adhere to the dashboard using the attached double sided tape. Connect the harness battery terminals to the vehicle battery.



**STEP 7
(WIRING
OPTION 2)**

Wiring Option 2 - Brake Light: Behind the RH rear wheel, drill (1) 1/4" hole within the grid panel. Route the backlight wiring harness through the hole towards the interior behind the tail light. Remove the RH tail light by removing (2) inner Phillips screws. Route the backlight harness through the wiring grommet above the RH tail light. Disassemble the plastic panels along the rear of the vehicle to reveal the wiring harnesses.



**STEP 8
(WIRING
OPTION 2)**

Wiring Option 2 - Brake Light (cont.): Locate and splice the bumper backlight wiring to the third brake light using the diagram below. Re-install the RH tail light assembly using original hardware. This will allow the backlight to power on with the vehicle brake lights.

<u>3rd Brake Light Harness</u>	-	<u>Backlight Harness</u>
White/Black (+)	-	Red (+)
Black (-)	-	Black (-)



STEP 9 (WIRING OPTION 3)

Wiring Option 3 - Parking Lights: Behind the RH rear wheel, drill (1) 1/4" hole within the grid panel. Route the backlight wiring harness through the hole towards the interior behind the tail light. Remove the RH tail light by removing (2) inner Phillips screws.



STEP 10 (WIRING OPTION 3)

Wiring Option 3 - Parking Lights: Splice the backlight to the vehicle parking lights using the diagram below. This will allow the backlight to power on with the vehicle parking lights using the interior headlight switch.

<u>Parking Light Harness</u>	-	<u>Backlight Harness</u>
White/Violet (+)	-	Red (+)
Black (-)	-	Black (-)



STEP 11

With the backlight wiring addressed, lift the bumper to the vehicle frame rails with assistance. Secure the outsides of the bumper using (2) M12 x 40mm bolts, (2) M12 lock washers, and (2) M12 flat washers per side.



STEP 12

Install the (2) 3/4" D-Rings to the bumper mounting points.

Installation is now complete.