



HD STUBBY FRONT BUMPER WITH JEEP LOGO BACKLIGHT

(2007-2018 WRANGLER JK)

INSTALLATION INSTRUCTIONS

CONTENTS

- (1) Bumper
- (2) 3/4" D-Rings
- (1) Backlight w/ Wiring Harness
- (1) Over-Rider Bar
- (2) Over-Rider Block Off Plates
- (2) Fog Light Brackets
- (4) M10x1.50 x 35mm Hex Bolts
- (6) M10x1.50 x 25mm Allen Bolts
- (14) M10 Lock Washers
- (20) M10 Flat Washers
- (10) M10 Nuts
- (2) M6x1.00 x 20mm Allen Bolts
- (2) M6 Plastic Flat Washers
- (2) M6 Flange Nuts
- (12) M4x0.7 x 15mm Allen Bolts
- (12) M4 Lock Washers
- (20) M4 Flat Washers
- (8) M4 Nuts
- (1) 6mm Allen Key
- (1) 4mm Allen Key
- (5) Cable Ties

TOOLS REQUIRED

- 10mm, 13mm, 17mm, 18mm
Sockets/Wrenches
- Ratchet
- Panel Removal Tool
- Phillips Screwdriver
- Wire Strippers/Cutters (Optional)
- 4mm, 6mm Allen Keys (Provided)

SKU # J164980



STEP 1

Remove the (6) plastic pins securing the factory splash guard to the vehicle.



STEP 2

Unplug the factory fog lights and loosen the (8) nuts securing the front bumper to the vehicle. Carefully remove the bumper from the vehicle.



STEP 3

Remove the (2) plastic push pins securing the bumper filler panel to the vehicle.



STEP 4

Use a Phillips head screwdriver to remove the fog lights from the factory bumper.



STEP 5

Using (2) M4 bolts, (2) M4 lock washers, and (2) M4 flat washers, attach the fog light bracket to the bumper.

Repeat for the remaining fog light bracket.



STEP 6

Using (4) M4 Allen bolts, (4) M4 lock washers, (4) M4 flat washers, (4) M4 nuts, attach the fog light to the bumper and bracket installed in Step 5.

Repeat for the remaining fog light.



STEP 7

Secure the backlight to the bumper using (2) M6 x 20mm bolts, (2) M6 plastic washers, and (2) M6 flange nuts.



STEP 8

Install the Over-Rider Bar to the bumper using (3) M10 x 25mm Allen bolts, (3) M10 lock washers, (6) M10 flat washers, and (3) M10 nuts per side. Alternatively, install the block off plates using the same hardware.



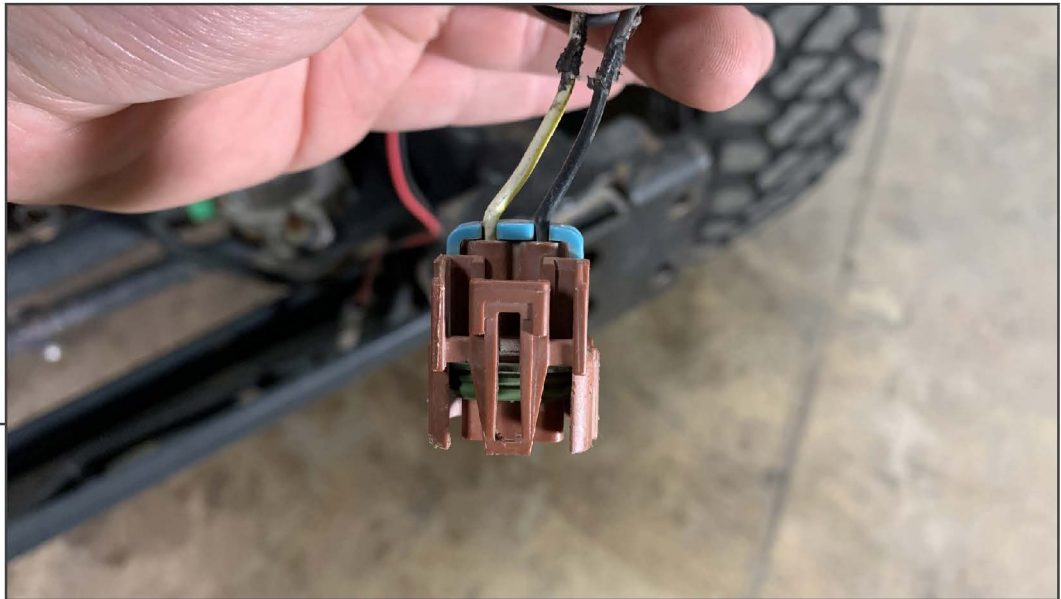
**STEP 9
(WIRING
OPTION 1)**

Wiring Option 1 - Standalone Harness: Route the terminal ends of the harness towards the vehicle battery. Then, neatly route the backlight connector towards the front of the vehicle along the fog light wiring. Plug in the backlight connector to the backlight.



**STEP 10
(WIRING
OPTION 1)**

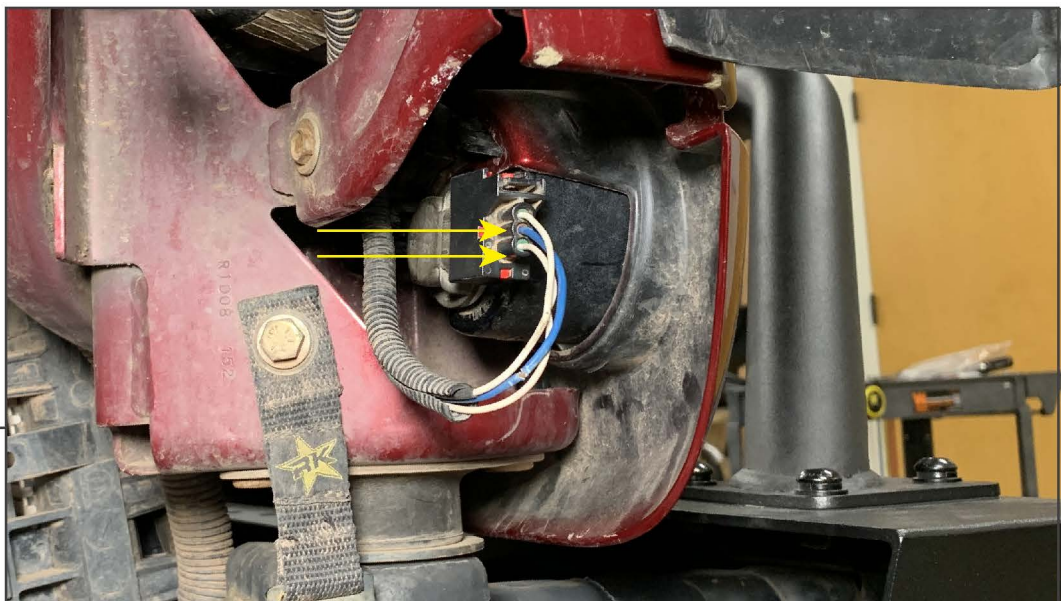
Wiring Option 1 - Standalone Harness (cont.): Route the switch harness across the firewall towards the Driver's side of the vehicle. From the interior, feed the switch connector through a suitable firewall grommet. Plug in the switch, and route to a suitable location inside the vehicle. Clean the desired switch location using isopropyl alcohol and a microfiber cloth, and adhere to the dashboard using the attached double sided tape. Connect the harness battery terminals to the vehicle battery.



**STEP 11
(WIRING
OPTION 2)**

Wiring Option 2 - Fog Lights: Cut the included wiring harness 18" after the backlight connector. Splice the backlight wire leads into the fog light harness using the following diagram. This will allow the backlight to power on with the vehicle fog lights using the interior fog light switch.

<u>Fog Light Harness</u>	-	<u>Backlight Harness</u>
White/Yellow (+)	-	Red (+)
Black (-)	-	Black (-)



**STEP 12
(WIRING
OPTION 3)**

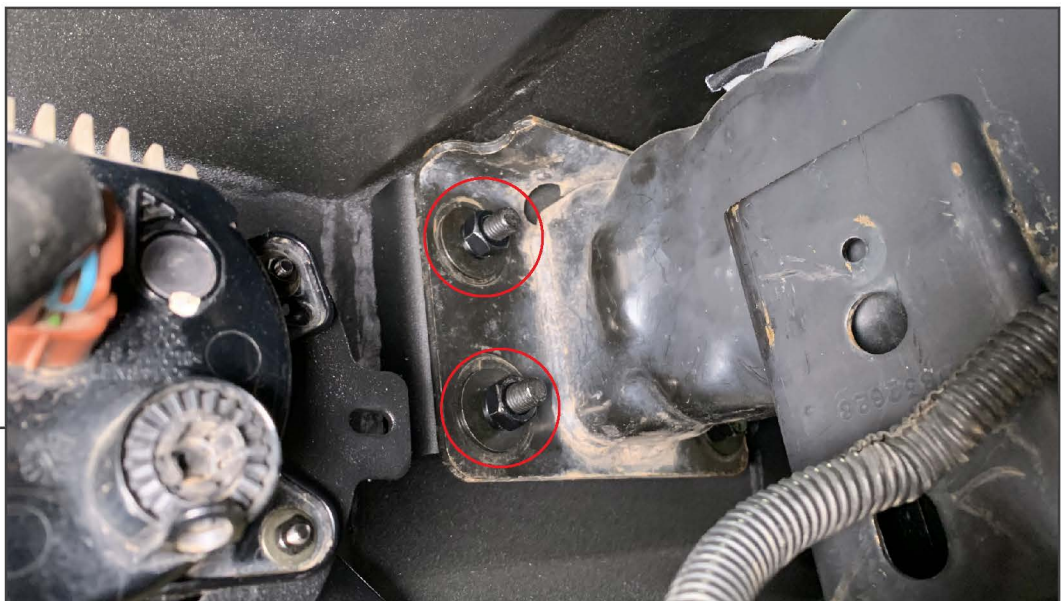
Wiring Option 3 - Parking Lights: Cut the included wiring harness 36" after the backlight connector. Route the backlight harness towards the grille parking light. Splice the backlight wire leads into the parking light using the following diagram. This will allow the backlight to power on with the vehicle parking lights using the interior headlight switch.

<u>Parking Light Harness</u>	-	<u>Backlight Harness</u>
White/Tan	-	Red (+)
Black (-)	-	Black (-)



STEP 13

With the backlight wiring addressed, lift the bumper to the vehicle frame rails with assistance. Secure the outsides of the bumper using (2) M10 x 35mm bolts, (2) M10 lock washers, and (2) M10 flat washers per side.



STEP 14

Secure the inside of the bumper to the vehicle frame rail using (2) M10 flat washers, (2) M10 lock washers, and (2) M10 nuts per side.



STEP 15

Plug in the fog lights and the backlight into the vehicle. Install the (2) 3/4" D-Rings to the bumper mounting points.

Installation is now complete.