



3” ROUND SIDE STEP BARS

(1987-1995 WRANGLER YJ)

(1997-2006 WRANGLER TJ - EXCLUDING UNLIMITED)

INSTALLATION INSTRUCTIONS

CONTENTS

- (2) Tube Steps
- (4) Body Mount Brackets
- (4) 19mm Bolts
- (4) Flat Washers
- (4) Lock Washers

TOOLS REQUIRED

- 10mm, 16mm, 19mm Sockets
- Ratchet

SKU # J164366

STEP 1



Remove OEM side step by removing the (7) 10mm bolts securing the step to the vehicle frame. Repeat this step for the opposite side of the vehicle.

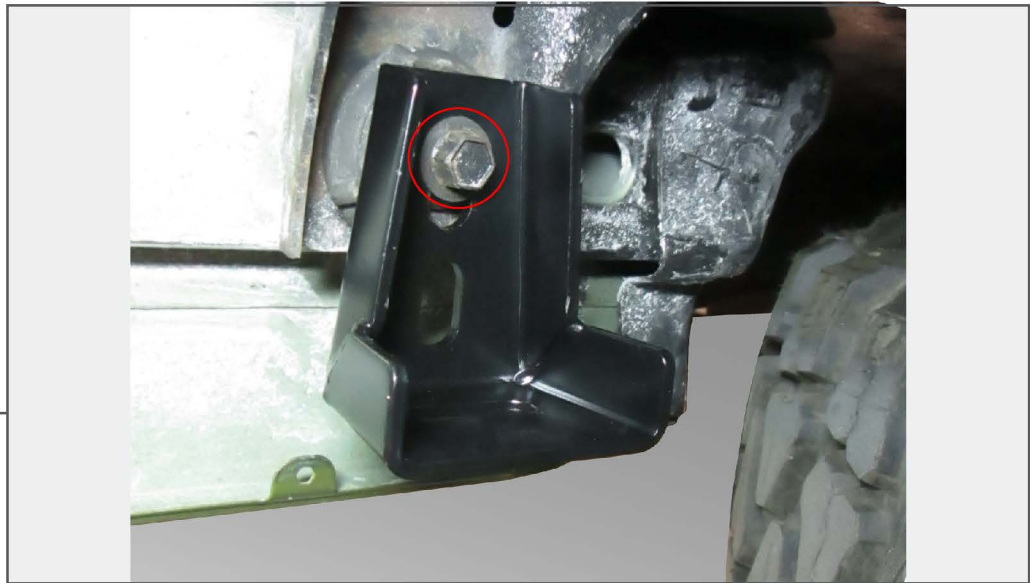
STEP 2



Remove (2) 16mm body mount bolts securing the vehicle body to the frame.

Note: REMOVE BODY MOUNT BOLTS FROM ONE SIDE OF THE VEHICLE AT A TIME.

STEP 3



Place (1) bracket over the front body mount. Reinstall the factory 16mm body mount bolt through the inner most hole (closest to the center of the vehicle) in the bracket. Tighten the bolt until it loosely holds the bracket in place.

STEP 4



Place (1) bracket over the rear body mount. Reinstall the factory 16mm body mount bolt through the outer most hole (closest to the outside of the vehicle) in the bracket. Tighten the body mount bolt until it loosely holds the bracket in place. Next, install (1) 19mm bolt, (1) lock washer, and (1) flat washer through the bracket and into the side step at the front and rear mount. Repeat the process on the other side. Tighten all hardware.



STEP 5

Tighten all hardware. Repeat steps 1-5 to the opposite side of the vehicle.

Installation is now complete.