



# CARVER LED TAIL LIGHTS

(2018-2021 JEEP WRANGLER JL)

---

## INSTALLATION INSTRUCTIONS

### CONTENTS

---

- (1) LH Tail Light
- (1) RH Tail Light
- (2) Resistor Brackets
- (4) 'S' Clips
- (4) M4 Bolts
- (4) M4 Nuts
- (2) Vampire Clips
- (4) Phillips Head Screws

### TOOLS REQUIRED

---

- Panel Removal Tool
- 10mm Socket
- Socket Wrench
- Phillips Screwdriver



## STEP 1

Open the vehicle cargo area to access the tail light trim cover. Using a soft pry tool remove the cover from the vehicle.



## STEP 2

Using a 10mm socket, loosen the plastic tail light retaining screw.

## STEP 3



Pull the tail light away from the vehicle to access the wiring connection.

## STEP 4

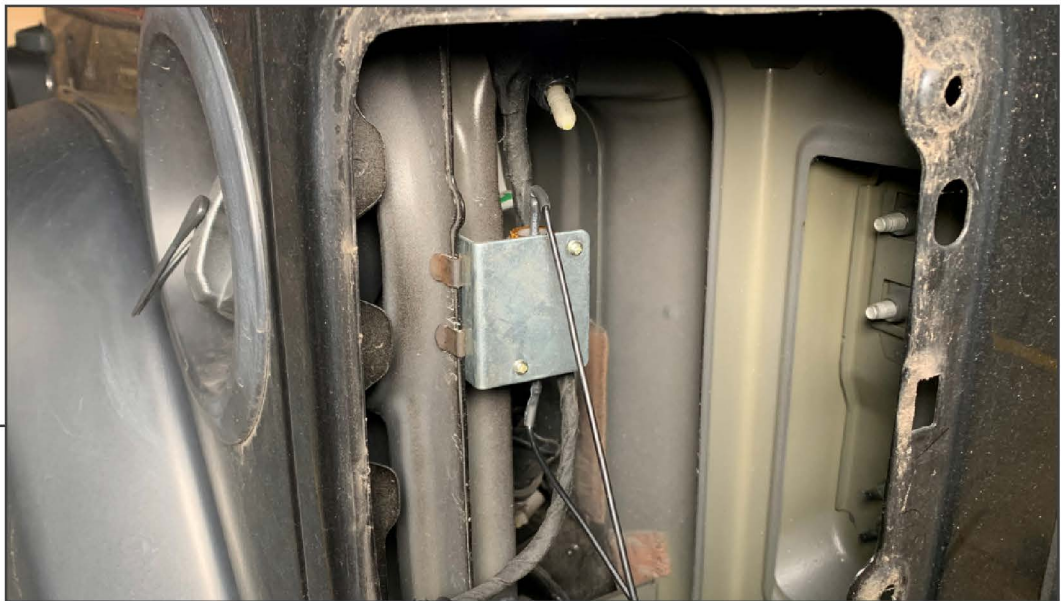


Slide back the plug's red locking tab. Then, depress the connector to and pull the plugs apart. Remove the factory tail light from the vehicle.



## STEP 5

Remove (3) Phillips screws to remove the mounting bracket from the original tail light. Install (1) vampire clip to the stud on the new tail light. Install the mounting bracket to the new tail light reusing original hardware.



## STEP 6

Secure the tail light resistor to the resistor bracket using (2) M4 bolt and (2) M4 nuts. Tighten until secure. Secure the resistor and bracket to the vehicle using (2) 'S' clips.



---

## STEP 7

Re-install the new LED tail lights following Steps 1-6 in reverse order. \*\*Note: Vehicles with Blind-Spot Detection will need to transfer the factory tail light sensors from the original light to the new LED light in order to retain Blind-Spot Detection functionality.

Installation is now complete.