



3 INCH CURVED SIDE STEPS

(2007-2018 WRANGLER JK - 4 DOOR)

INSTALLATION INSTRUCTIONS

CONTENTS

(2) Side Steps
(6) Brackets
(6) Nut Plates
(24) Small Flat Washers
(6) Large Flat Washers
(6) Extra Large Flat Washers
(12) Hex Head Bolts
(12) Small Bolts
(6) Medium Bolts
(6) Large Bolts
(18) Small Lock Washers
(6) Large Lock Washers
(12) Nuts

TOOLS REQUIRED

13mm, 16mm Sockets
Ratchet
10mm Wrench
4mm Allen Key

SKU # J157735

STEP 1



Insert (1) nut plate for each bracket into the existing holes on the bottom of the body.

STEP 2



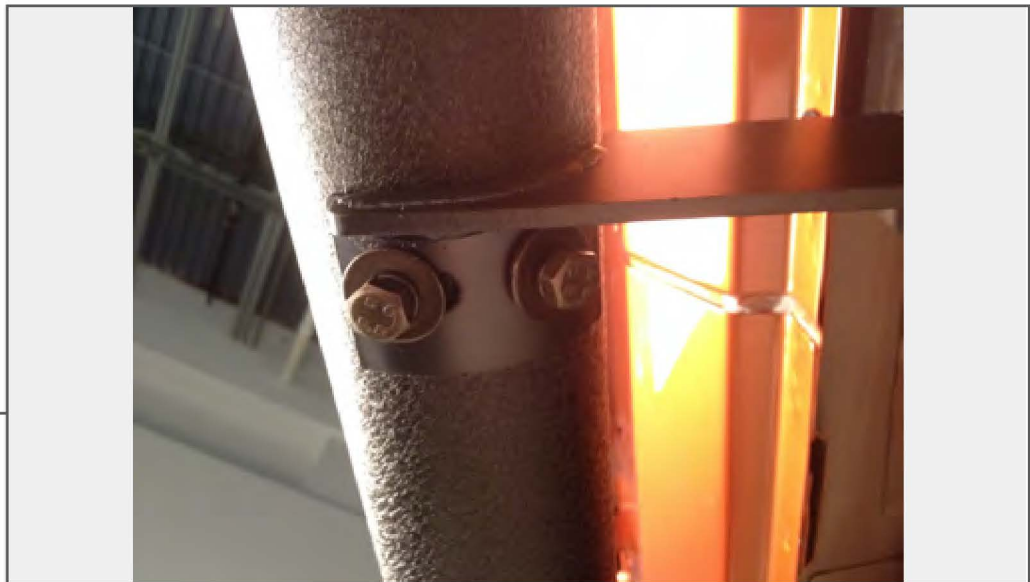
Place the correctly labeled bracket behind the pinch weld and loosely secure both holes with (1) hex head bolt and (1) flat washer placed through the pinch weld and bracket, then hand tighten with (1) flat washer and (1) nut on the inside.

STEP 3



Insert (1) large bolt and (1) flat washer through the bracket and into the body hole that contains the nut plate. Hand tighten the hardware.

STEP 4



Find the left and right steps; install (2) bolts, with lock washers and flat washers, through the brackets into the threaded bottoms of the side steps. Tighten down hardware on the body, then secure the steps in place.



STEP 5

Installation is now complete.