



# TRAIL SERIES FRONT SHOCK ABSORBER FOR 3.5”- 4” LIFT

(1997-2006 WRANGLER TJ)

---

## INSTALLATION INSTRUCTIONS

### CONTENTS

---

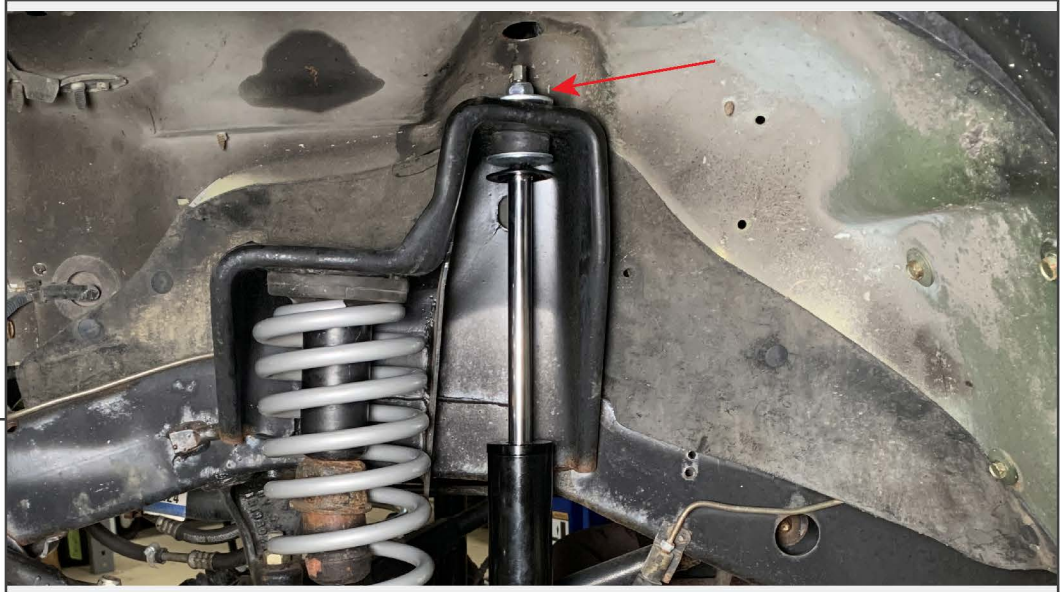
(1) Shock Absorber

### TOOLS REQUIRED

---

1/2” Socket  
Ratchet  
17mm Wrench

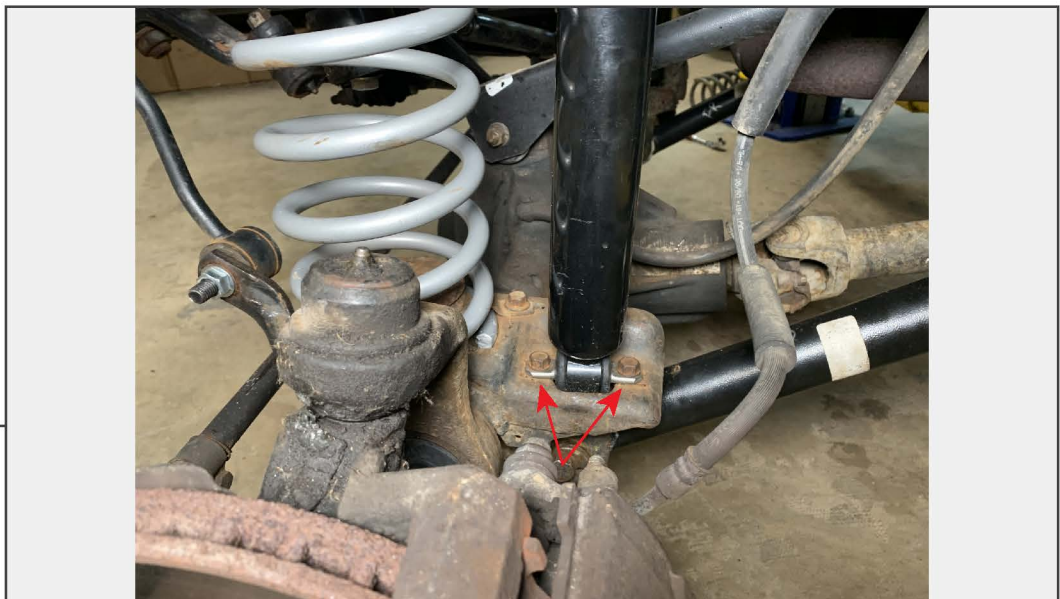
SKU # J156688



**STEP 1**

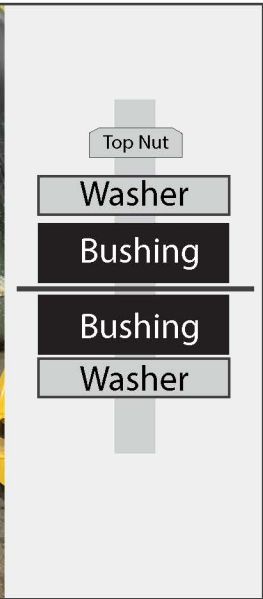
Lift and support the vehicle using a floor jack and jack stands. Remove the vehicle wheels.

Locate the shock absorber, and remove the upper nut securing the shock to the frame.



**STEP 2**

Remove the (2) bolts securing the shock absorber to the axle. Remove the shock absorber from the vehicle.



**STEP 3**

Fit the new shock absorber between the axle mount and the vehicle frame.

Ensure the top mount has (1) bushing installed on the stud before fitting to the frame. See the diagram above. Secure the top of the shock to the vehicle using the included hardware. Do not over-compress the bushings while tightening.

Secure the bottom of the shock to the axle using the OEM shock absorber bolts.

Installation is now complete.