



---

# ALUMINUM SIDE STEPS WITH LED LIGHTING

(2018-2021 WRANGLER JL)

---

## INSTALLATION INSTRUCTIONS

### CONTENTS

---

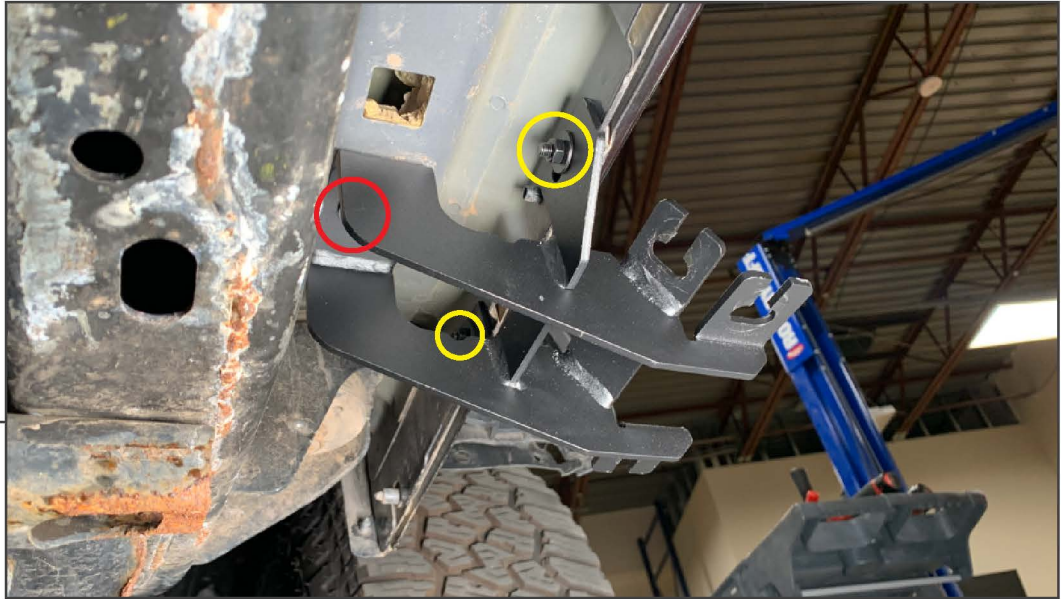
- (1) LH Aluminum Side Step
- (1) RH Aluminum Side Step
- (2) Front Mounting Brackets
- (2) Middle Mounting Brackets
- (2) Rear Mounting Brackets
- (6) M8x1.25 x 25mm Bolts
- (6) M8 Lock Washers
- (30) M8 Flat Washers
- (24) M8 Locking Nuts
- (12) M6x1.00 x 25mm Bolts
- (12) M6 Lock Washers
- (24) M6 Flat Washers
- (12) M6 Nuts
- (10) Scotchlok Connectors

### TOOLS REQUIRED

---

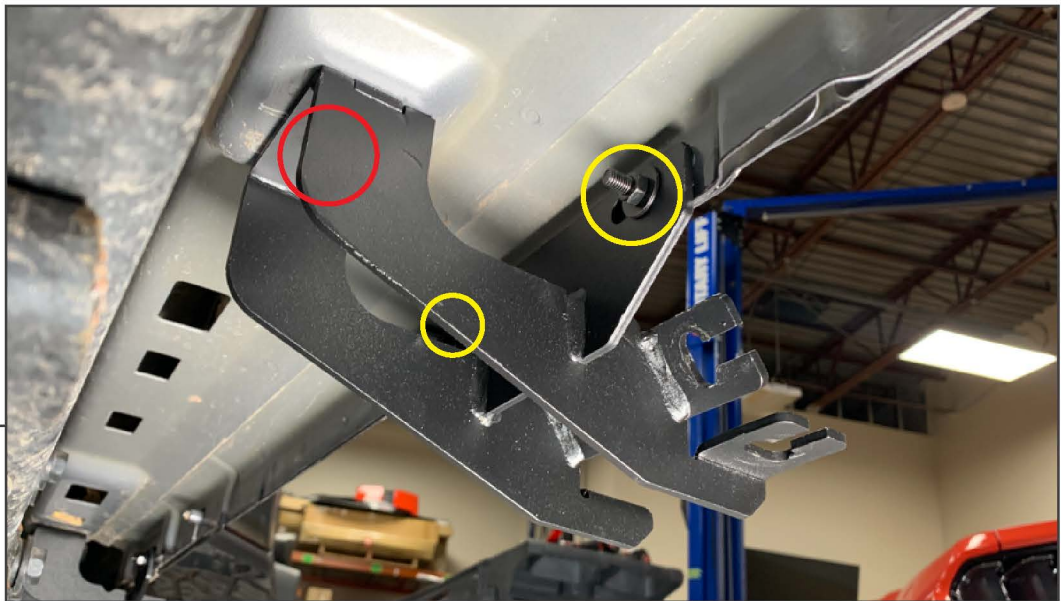
- 10mm, 13mm Sockets
- 10mm Wrench
- Ratchet
- Needle Nose Pliers
- Mechanic's Wire
- Razor Blade
- Electrical Tape
- Wire Strippers

SKU # J156684-JL

**STEP 1**

Secure the front mounting bracket to the pre-drilled holes in the vehicle using (1) M8x1.25 x 25mm bolt, (1) M8 lock washer, and (1) M8 flat washer. Secure the mounting bracket to pinch weld using (2) M6x1.00 x 25mm bolts, (2) M6 lock washers, (4) M6 flat washers, and (2) M6 nuts.

**Note:** Front mounting bracket has dedicated rocker panel cutout only for the front of the vehicle.

**STEP 2**

Secure the center mounting bracket to the pre-drilled holes in the vehicle using (1) M8x1.25 x 25mm bolt, (1) M8 lock washer, and (1) M8 flat washer. Secure the mounting bracket to pinch weld using (2) M6x1.00 x 25mm bolts, (2) M6 lock washers, (4) M6 flat washers, and (2) M6 nuts.

**Note:** Center mounting bracket has longer mounting arm dedicated for center of the vehicle.

**STEP 3**

Secure the rear mounting bracket to the pre-drilled holes in the vehicle using (1) M8x1.25 x 25mm bolt, (1) M8 lock washer, and (1) M8 flat washer. Secure the mounting bracket to pinch weld using (2) M6x1.00 x 25mm bolts, (2) M6 lock washers, (4) M6 flat washers, and (2) M6 nuts.

**Note:** Rear mounting bracket has shorter mounting arm dedicated for rear of the vehicle.

**STEP 4**

Slide the studs on the bottom of the side steps to surround each mounting bracket. Place the side step onto the mounting brackets, then slide the studs into each mounting bracket. Center the step to the vehicle, then tighten the (12) side step mounting nuts to secure the side step to the vehicle mounting brackets.

**Note:** Ensure side step wiring is facing towards the front of the vehicle.

**STEP 5**



Repeat steps 1-4 to the opposite side of the vehicle to install the remaining side step to the vehicle.

**STEP 6**



Neatly route the wiring harness towards the front of the vehicle. Wiring the side step lighting will require removing the vehicle fenders.

**STEP 7**



Remove (4) 10mm bolts inside the fender well.

**STEP 8**



Remove the (3) push clips from the fender liner using a panel removal tool.

**STEP 9**



Using pliers, depress the white fender clips while pulling the fender away from the vehicle. Start at the bottom of the fender closest to the doors.

**STEP 10**

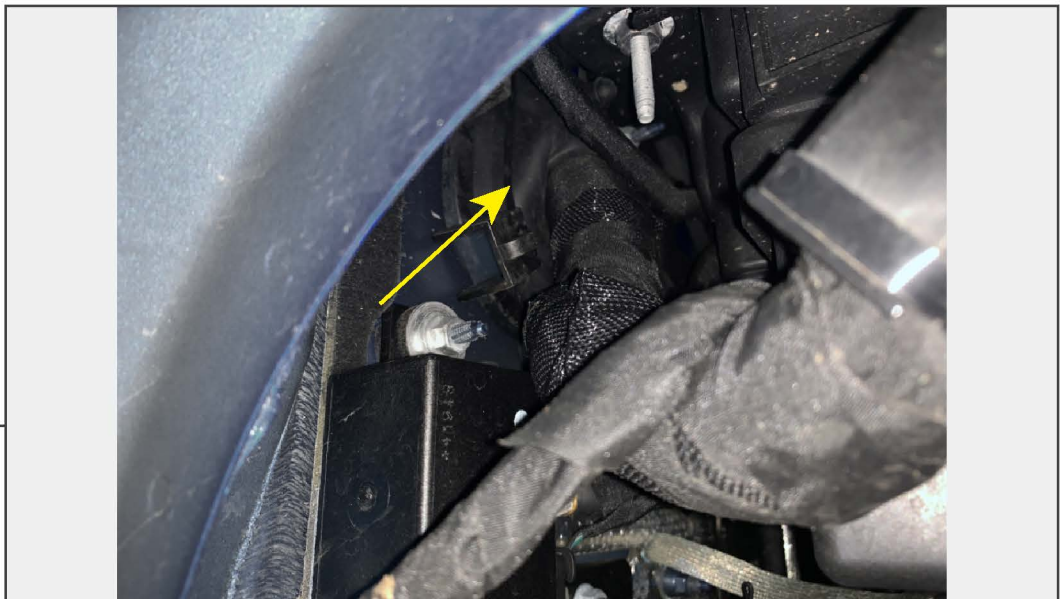


Once the fender is halfway off, unplug the electrical connector. Slide the red safety connector out, then press in the inner black plug and separate the pigtail. Pull the fender the rest of the way off.

**STEP 11**

Using (5) scotchlok connectors, splice the side step wiring into the front fender turn signal harness following the diagram below. **\*\*Cut side step wires to appropriate to length if necessary.**

<u>Side Step Harness</u>	-	<u>Vehicle Wiring Harness</u>
Red	-	Constant 12V+
Black	-	Ground (Black)
Yellow(LH) / Green(RH)	-	Turn Signal Power (White/Green)
Brown	-	Parking Light Power (White/Brown)
White	-	Under Step Light (See Steps 12-15)

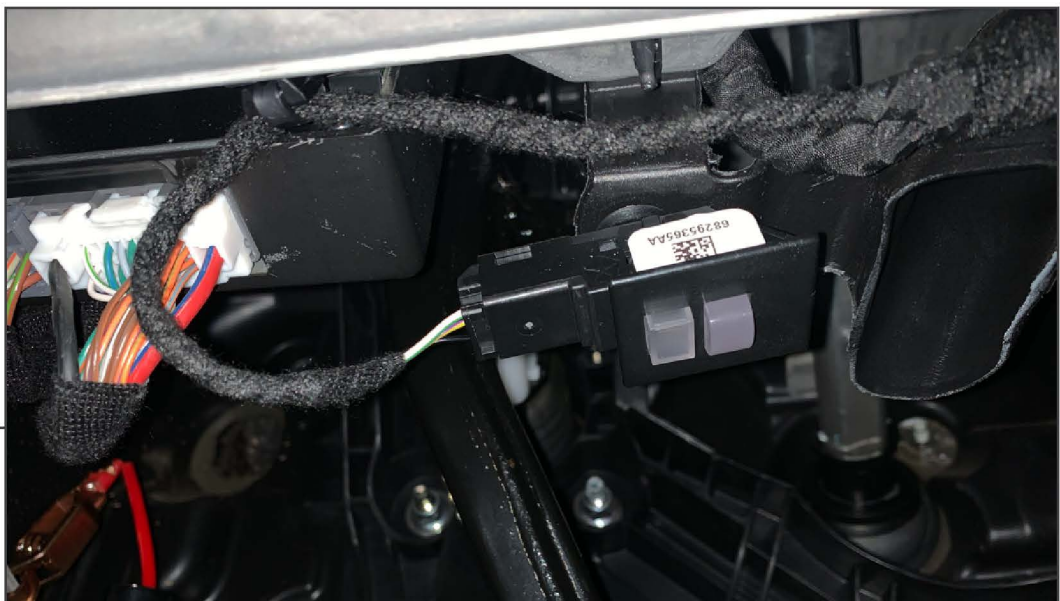
**STEP 12  
(PASSENGER  
SIDE)**

Route the white wire of the side step towards the vehicle fire wall. Using a razor blade, carefully cut a slot in the grommet. Using mechanic's wire, route the white wire through the grommet into the vehicle.

**Note:** Use caution when cutting the grommet, as there are multiple vehicle wiring harnesses within the grommet.

**STEP 13  
(DRIVER SIDE)**

Route the white wire of the side step towards the vehicle fire wall. Twist the indicated grommet counter-clockwise to allow the grommet to be removed from the vehicle. Carefully cut a slot in the grommet. Re-install the grommet into the vehicle. Using mechanics wire, route the white wire through the grommet into the vehicle.

**STEP 14**

With the white wire inside the vehicle cabin, locate the floorboard light. Unplug the electrical connector from the floorboard light by pressing the plastic tab on the top of the connector. Carefully cut back the wire loom, and splice the side step white wire into the floorboard light following the diagram below. Repeat this step to the opposite side of the vehicle.

<u>Side Step Harness</u>	-	<u>Vehicle Wiring Harness</u>
White	-	White/Green





**STEP 15**

Re-install the fender to the vehicle following steps 7-10 in reverse order.

Installation is now complete.