



DOT APPROVED 7” LED HEADLIGHT WITH DRL

(1997-2006 WRANGLER TJ)
(2007-2018 WRANGLER JK)

INSTALLATION INSTRUCTIONS

CONTENTS

(2) Headlight Assemblies
(2) Anti-Flicker Harness
(2) Adapter Harness
(2) DRL Add-on Wire

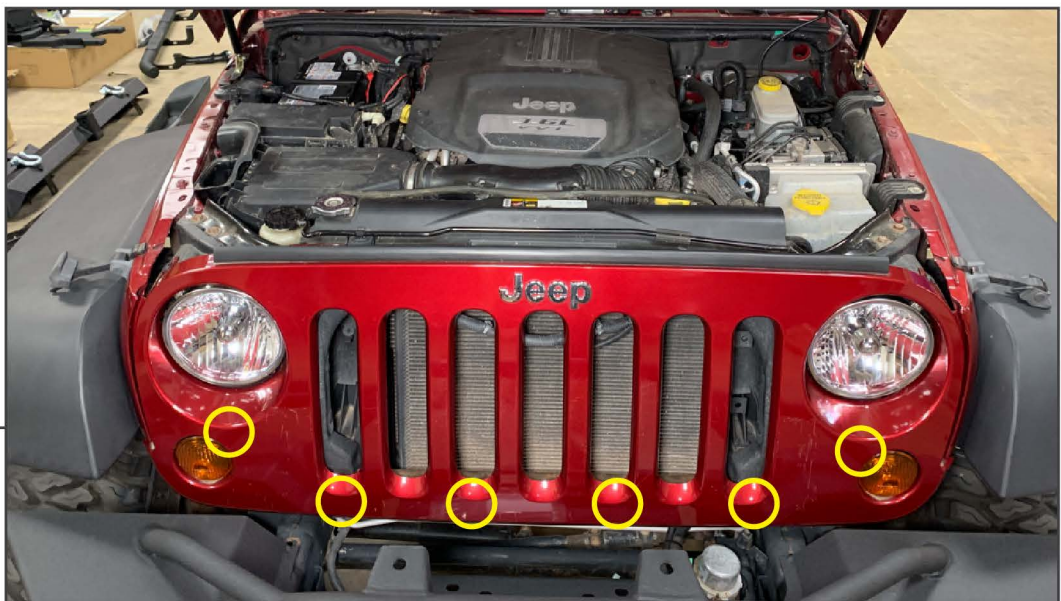
TOOLS REQUIRED

T-15 Torx Screwdriver
Panel Removal Tool



STEP 1

Open the hood of the vehicle. Remove (6) plastic push clips from the top of the grille.



STEP 2

Firmly pull the lower portion of the grille to dislodge (6) metal clips securing the grille to the radiator support.



STEP 3

Twist the turn signal socket to remove the turn signal bulbs from the grille. Remove the grille from the vehicle.

Repeat this procedure to the opposite side of the vehicle.

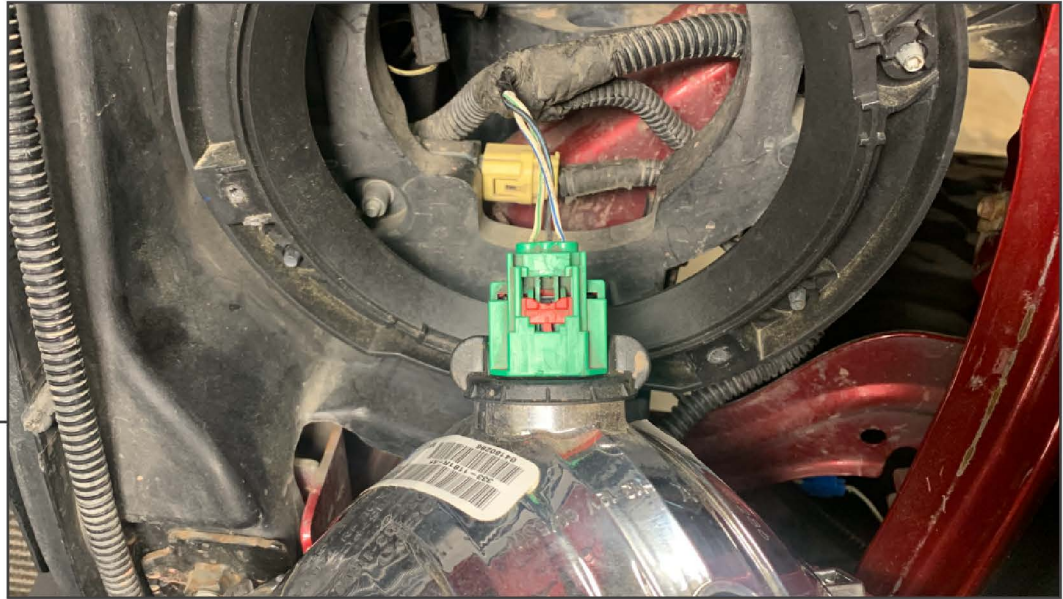


STEP 4

Remove (4) T-15 Torx screws from the headlight retaining ring.

Repeat this step to the opposite side of the vehicle.

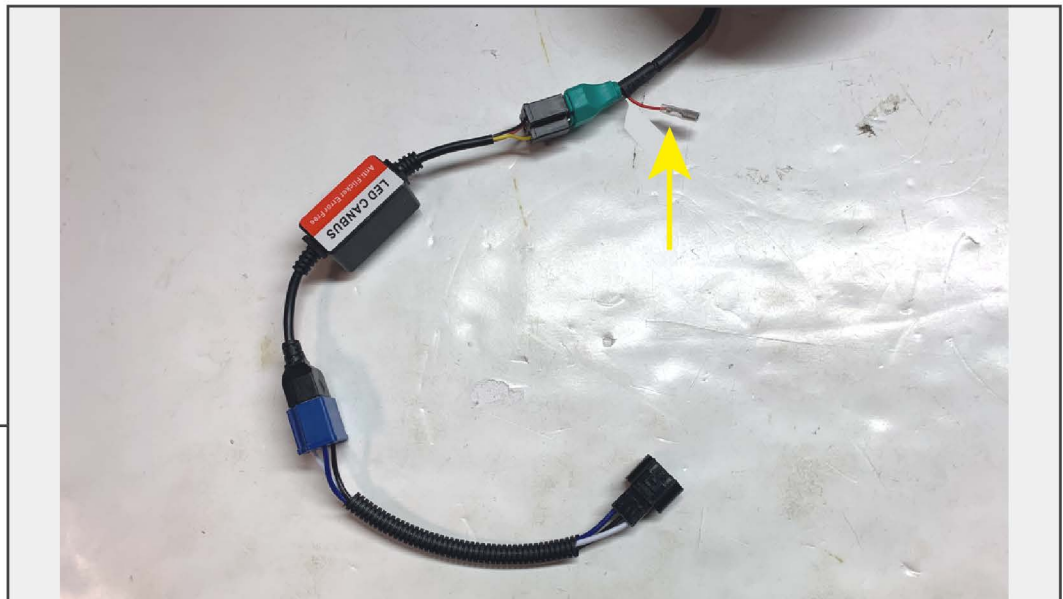
STEP 5



Un-plug the headlight from the vehicle. Slide the red locking tab towards the back of the connector, then press in the green plastic tab to dislodge the electrical connector from the headlight.

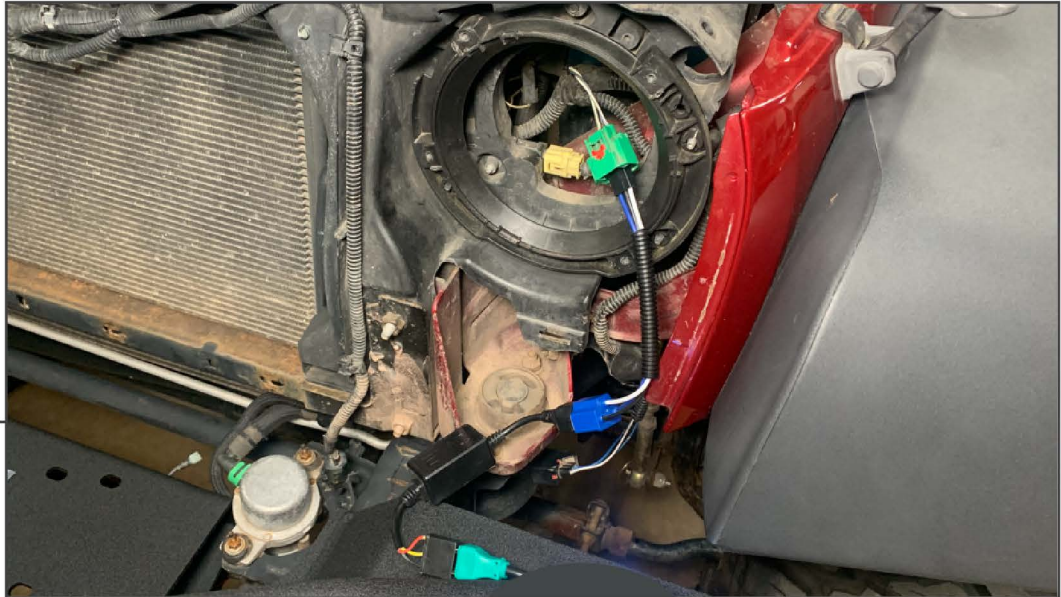
Repeat this step to the opposite side of the vehicle.

STEP 6



Assemble the headlight assembly harness. Connect (1) anti-flicker harness to the headlight assembly, following with (1) headlight adapter harness per headlight. Connect (1) DRL add-on harness to the remaining wire on the headlight assembly harness.

STEP 7



Plug the new headlight harness into the original vehicle headlight connector. Wire the DRL add-on harness following the diagram below.

<u>Vehicle Wiring Harness</u>	-	<u>LED Headlight Add-on Harness</u>
Parking Light Power	-	Yellow

Note: Ensure harness is fully secure before sliding red locking tab into place.

STEP 8



Re-assemble the vehicle following steps 1-7 in reverse order.

Installation is now complete.