



KICK PANEL FOOT REST

(2018-2021 WRANGLER JL - AUTOMATIC TRANSMISSION)
(2020-2021 GLADIATOR JT - AUTOMATIC TRANSMISSION)

INSTALLATION INSTRUCTIONS

CONTENTS

- (1) Foot Rest
- (1) Mounting Bracket
- (1) Stud Plate
- (2) M6 Nuts
- (2) M6 Lock Washers
- (2) M6 Flat Washers
- (1) M8x1.25 x 20mm Allen Bolt
- (1) M8 Flat Washer
- (1) M8 Lock Washer
- (1) M8 Nut

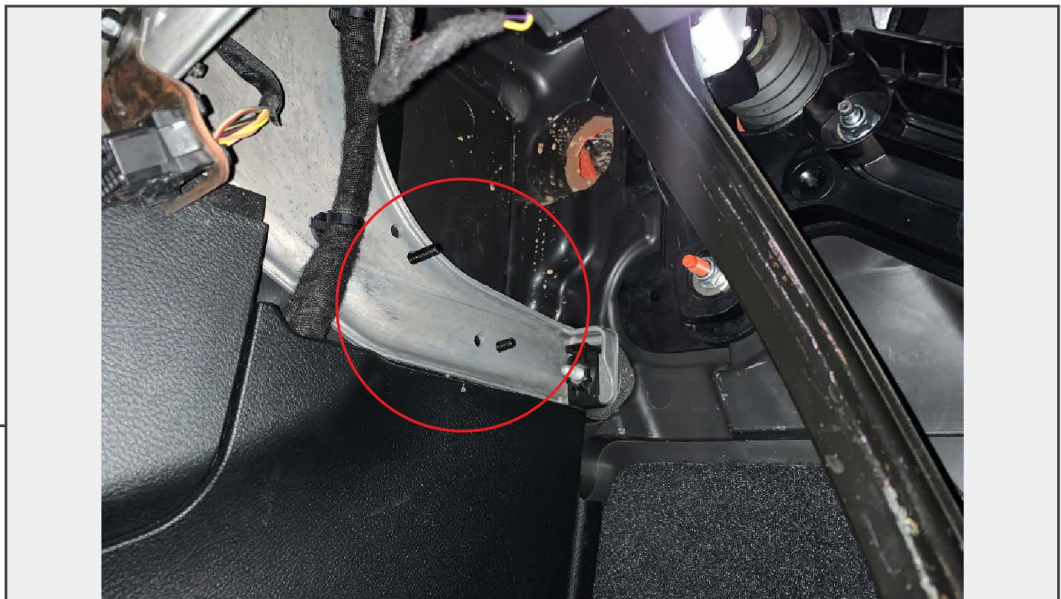
TOOLS REQUIRED

- 10mm, 14mm Socket
- 10mm, 14mm Wrench
- Ratchet
- 5mm Allen Key

SKU # J154606

STEP 1

Determine the appropriate mounting location for the foot rest in the mounting bracket. Assemble the foot rest to the mounting bracket using (1) M8x1.25 x 20mm Allen bolt, (1) M8 Flat washer, (1) M8 lock washer, and (1) M8 nut. Tighten until secure.

STEP 2

Locate the (1) dashboard arm above the plastic kick panel. Peel back the double sided tape, then place (1) stud plate into the pre-drilled holes in the arm to allow the studs to stick out towards the pedals.

STEP 3

Align the previously assembled foot rest to the mounting studs. Secure the foot rest into place using (2) M6 flat washers, (2) M6 lock washers, and (2) M6 nuts. Tighten until secure.

Note: If the foot rest is not at the desired position, repeat steps 1-3 to re-position the foot rest on the mounting bracket.

STEP 4

Installation is now complete.