



REAR WINDOW GLASS HINGE LED LIGHTS

(2007-2018 WRANGLER JK; HARD TOP ONLY)

INSTALLATION INSTRUCTIONS

CONTENTS

- (1) Pair of Hinge Lights
- (6) Adhesive Harness Holders
- (4) Scotchlok Connectors

TOOLS REQUIRED

- T-30 Torx Socket
- 10mm Socket
- Ratchet
- Plastic Pry Tool
- Phillips Screwdriver
- Razor Blade

STEP 1



Using a plastic pry tool, gently pry the hinge covers from the rear glass hinges, starting from the bottom. The cover will hinge upward once dislodged. Lift the hinge cover from the vehicle.

STEP 2



Install the LED hinge covers onto the rear glass hinges by replicating the removal process in reverse order, ensuring the covers audibly click into place. Ensure the wire harness is routing towards the passenger side of the vehicle.



STEP 3

Using the (6) adhesive harness holders, route the wiring harness around the hard top weather seal. Route the harness under the gasket in between the tailgate and the hardtop into the interior.



STEP 4

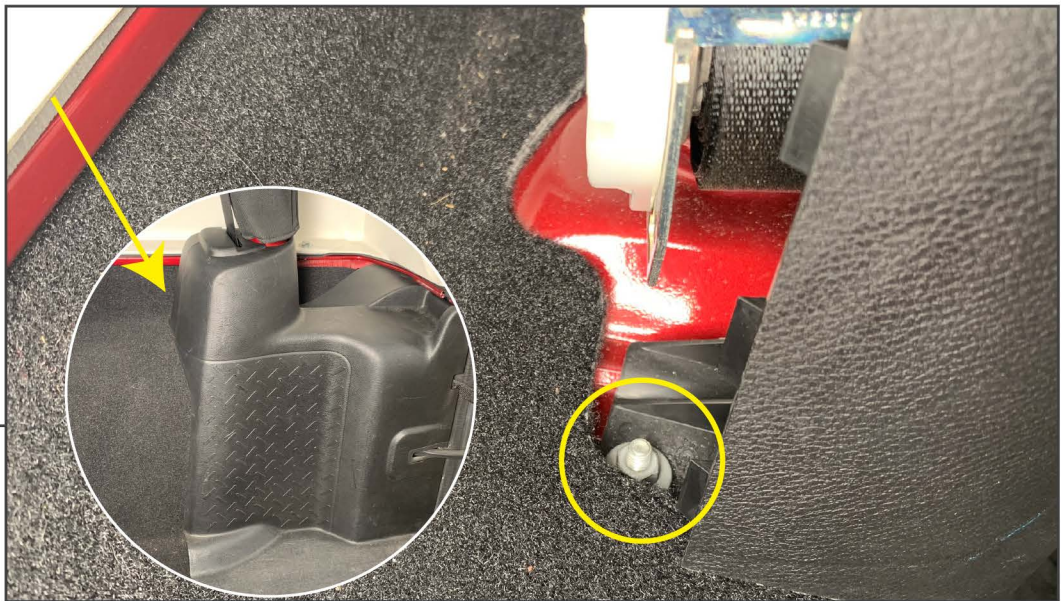
Using a T-30 Torx bit, remove the (2) screws securing the trim panel to the vehicle.

STEP 5

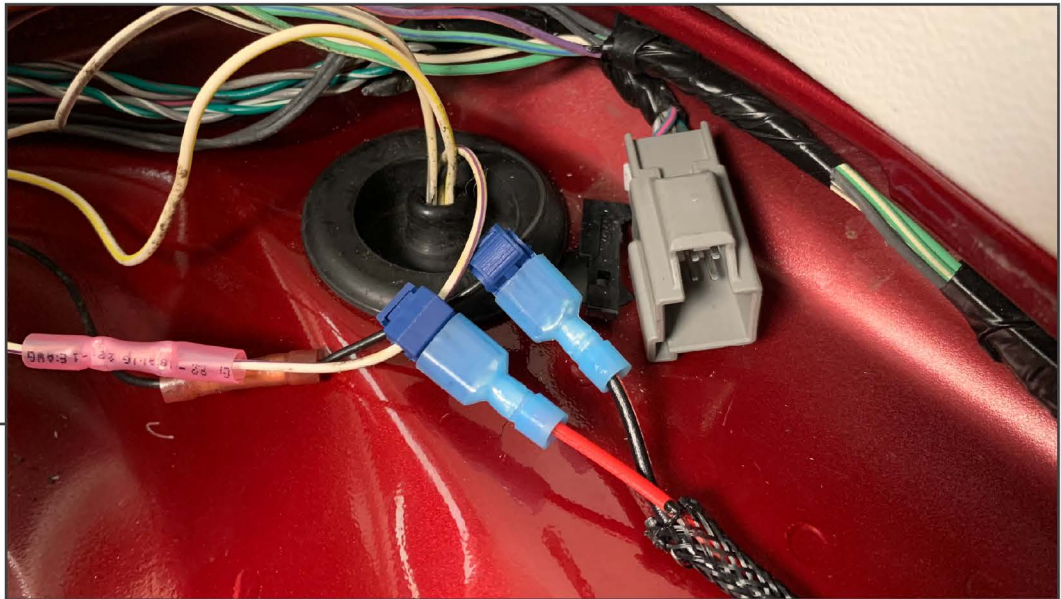


Carefully pry the trim panels apart. Remove the smaller panel to access the remaining 10mm nut.

STEP 6



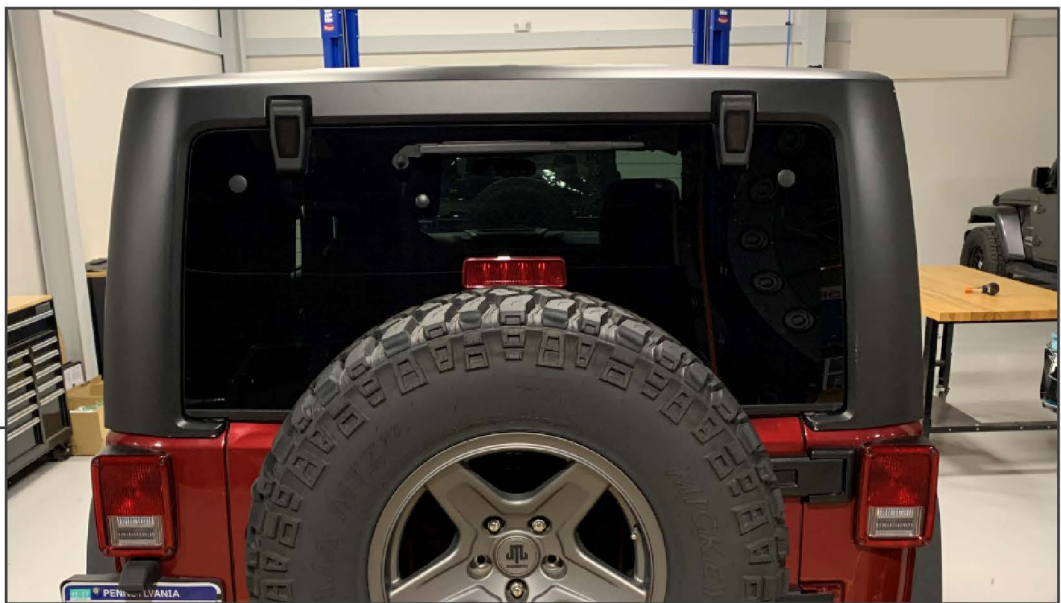
Locate and remove the 10mm nut. Then remove the panel from the vehicle to expose the tail light wiring.



STEP 7

Splice the hinge lighting harness into the accessible vehicle wiring harness following the diagram below. Test each circuit before splicing. Use provided (4) scotchlok connectors to splice into wiring.

| <u>Vehicle Harness</u> | - | <u>Hinge Lighting Harness</u> |
|-------------------------------|---|-------------------------------|
| White/Purple (Parking Lights) | - | Green |
| White/Yellow (Reverse) | - | White |
| White/Gray (3rd Brake Light) | - | Red |
| Ground (-) | - | Black |



STEP 8

Once the wires are spliced to the vehicle, install the interior panels using original hardware.

Installation is now complete.