



---

# TUBULAR DROP STEPS

(2018-2021 WRANGLER JL 4 DOOR)

---

## INSTALLATION INSTRUCTIONS

### CONTENTS

---

(2) Side Step Bars  
(2) Front Pinch Weld Brackets  
(2) Middle Pinch Weld Brackets  
(2) Rear Pinch Weld Brackets  
(12) M10 Bolts  
(24) M10 Flat Washers  
(12) M10 Locking Nuts  
(6) M8 Bolts  
(6) M8 Lock Washers  
(6) M8 Flat Washers  
(12) M6 Bolts  
(24) M6 Flat Washers  
(12) M6 Locking Nuts

### TOOLS REQUIRED

---

10mm, 13mm, 16mm, 17mm  
Sockets  
10mm, 16mm, 17mm Wrenches  
Socket Wrench

SKU # J152421-JL

**STEP 1**

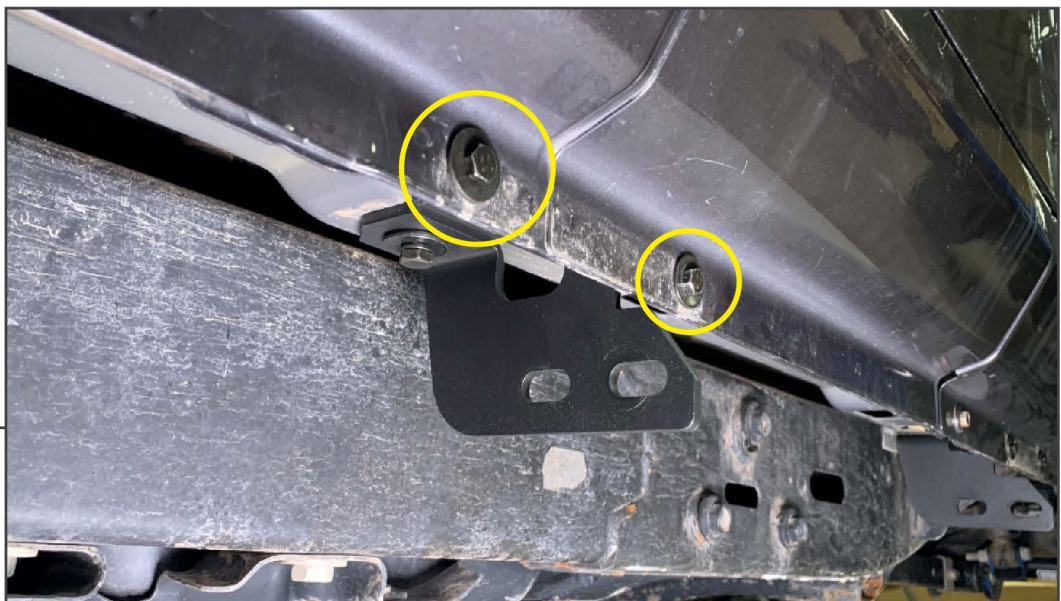
Install the front pinch weld bracket to the vehicle. Loosely install (1) M8 bolt, (1) M8 lock washer, and (1) M8 flat washer through the pinch weld bracket into the pre-drilled hole in the vehicle.

**STEP 2**

Install (2) M6 bolts, (4) M6 flat washers, and (2) M6 locking nuts through the pinch weld to secure the front of the pinch weld bracket to the vehicle.

**STEP 3**

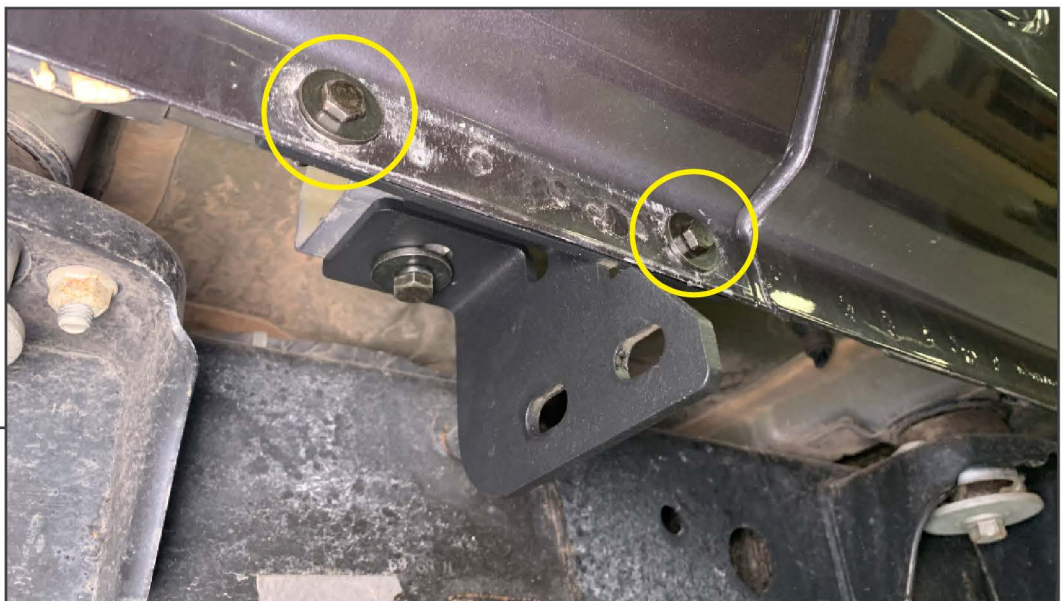
Install the middle pinch weld bracket to the vehicle. Loosely install (1) M8 bolt, (1) M8 lock washer, and (1) M8 flat washer through the pinch weld bracket into the pre-drilled hole in the vehicle.

**STEP 4**

Install (2) M6 bolts, (4) M6 flat washers, and (2) M6 locking nuts through the pinch weld to secure the front of the pinch weld bracket to the vehicle.

**STEP 5**

Install the rear pinch weld bracket to the vehicle. Loosely install (1) M8 bolt, (1) M8 lock washer, and (1) M8 flat washer through the pinch weld bracket into the pre-drilled hole in the vehicle.

**STEP 6**

Install (2) M6 bolts, (4) M6 flat washers, and (2) M6 locking nuts through the pinch weld to secure the front of the pinch weld bracket to the vehicle.



---

**STEP 7**

Install the tubular side step to the vehicle using (6) M10 bolts, (12) M10 flat washers, and (6) M10 locking nuts. Adjust the side step to the vehicle, then tighten all hardware until secure. Repeat steps 1-7 to the opposite side.

Installation is now complete.