

PART #	DESCRIPTION
22021	18-UP JEEP JL FRONT LOWER LINK KIT

COMPONENTS INCLUDED	
(2) 124060 18-UP JEEP JL FRONT LOWER LINK	
HARDWARE INCLUDED	
N/A	
TOOLS REQUIRED	
TORQUE WRENCH 15MM SOCKET / WRENCH	21MM SOCKET / WRENCH 24MM SOCKET / WRENCH
TECH NOTES	
1. ICON FRONT LOWER LINKS ARE LONGER THAN FACTORY LINKS AND WILL INCREASE CASTER BEYOND THE FACTORY ALIGNMENT RANGE IF USED AT STOCK RIDE HEIGHT.	

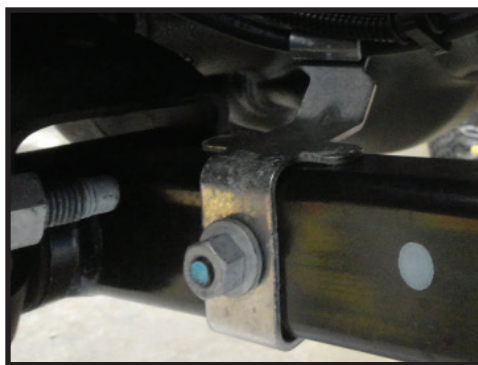


WARNING!
<p>** READ ALL INSTRUCTIONS THOROUGHLY FROM START TO FINISH BEFORE BEGINNING INSTALLATION! IF THESE INSTRUCTIONS ARE NOT PROPERLY FOLLOWED SEVERE FRAME, SUSPENSION AND TIRE DAMAGE MAY RESULT TO THE VEHICLE!</p> <p>** ICON VEHICLE DYNAMICS RECOMMENDS THAT YOU EXERCISE EXTREME CAUTION WHEN WORKING UNDER A VEHICLE THAT IS SUPPORTED WITH JACK STANDS.</p> <p>** ICON VEHICLE DYNAMICS RECOMMENDS ALL INSTALLATION TO BE PERFORMED BY A PROFESSIONAL SHOP/SERVICE TECHNICIAN. PRODUCT FAILURE CAUSED BY IMPROPER INSTALLATION WILL NOT BE COVERED UNDER ICON'S WARRANTY POLICY.</p>

INSTALLATION

1. Place the vehicle on a smooth, level surface. Ensure that the vehicle is in PARK, engage the emergency brake, and chock the tires before performing any work to the vehicle. ICON will not be held liable for any injuries or failure caused by improper installation.
2. Remove the brake line bracket from the front lower links using a 15mm socket/wrench. [FIGURE 1]

FIG.1



3. Remove the factory front lower link from one side of the vehicle using a 21mm and a 24mm.

4. Install the ICON front lower link using a 21mm and 24mm and the factory hardware. The bend goes to the inside for tire clearance and should be closer to the differential. [Torque to factory spec] [FIGURE 2 & 3]

FIG.2

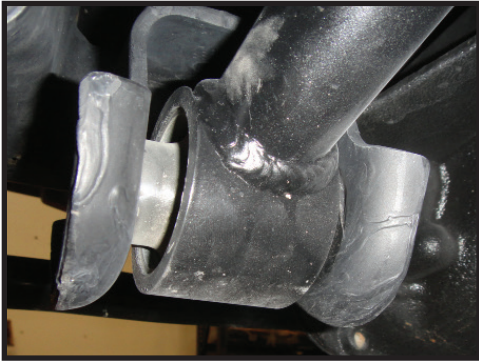
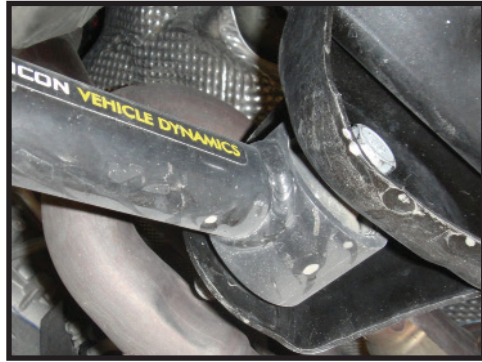


FIG.3



5. Fasten the brake line bracket to the link using the factory hardware. [Torque to factory spec] [FIGURE 4]

FIG.4



6. Repeat steps on the opposite side.

VERIFY ALL FASTENERS ARE PROPERLY TORQUED BEFORE DRIVING VEHICLE.

RETORQUE ALL NUTS, BOLTS AND LUGS AFTER 100 MILES AND PERIODICALLY THEREAFTER.

ICON VEHICLE DYNAMICS LIMITED LIFETIME WARRANTY

ICON Vehicle Dynamics warrants to the original retail purchaser who owns the vehicle on which the product was originally installed. ICON Vehicle Dynamics does not warrant the product for finish, alterations, modifications and/or installation contrary to ICON Vehicle Dynamics instructions. ICON Vehicle Dynamics products are not designed, nor are they intended to be installed on vehicles used in race applications, for racing purposes or for similar activities. (A "race" is defined as any contest between two or more vehicles, or a contest of one or more vehicles against the clock, whether or not such contest is for a prize). This warranty does not include coverage for police or taxi vehicles, race vehicles, or vehicles used for government or commercial purposes. Also excluded from this warranty are sales outside of the United States of America and Canada.

ICON Vehicle Dynamics' obligation under this warranty is limited to the repair or replacement, at ICON Vehicle Dynamics' discretion, of the defective product. Any and all costs of removal, installation or re-installation, freight charges and incidental or consequential damages are expressly excluded from this warranty. Items that are subject to wear are not considered defective when worn and are not covered.

ICON Vehicle Dynamics components must be installed as a complete kit as shown in our current application guide. Any substitutions or exemptions of required components will immediately void the warranty. Some finish damage may happen to parts during shipping and is not covered under warranty.

This warranty is expressly in lieu of all other warranties expressed or implied. This warranty shall not apply to any product that has been improperly installed, modified or customized subject to accident, negligence, abuse or misuse.



ICON VEHICLE DYNAMICS®
PERFORMANCE SUSPENSION SYSTEMS AND SHOCK ABSORBERS

7929 Lincoln Ave. Riverside, CA 92504 Phone: 951.689.ICON Fax: 951.689.1016
www.iconvehicledynamics.com

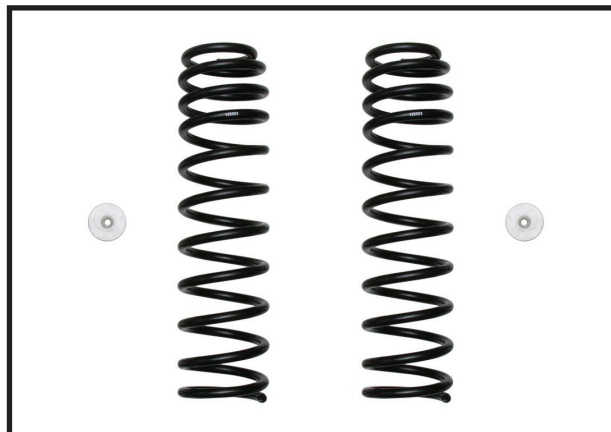


FOLLOW US ON FACEBOOK!



PART #	DESCRIPTION
22025	18-UP JL/20-UP JT 2.5" LIFT FRONT DUAL RATE SPRING KIT

COMPONENTS INCLUDED	
(2) 128503 JL/JT FRONT DUAL RATE SPRING (1) 128005 JL/JT .375" FRONT COIL SHIM	(1) 22025H JL/JT FRONT COIL HARDWARE KIT
HARDWARE INCLUDED	
22025H HARDWARE KIT	
(2) 127200 JL/JT FRONT BUMPSTOP SPACER 1" (2) 605111 3/8-16 X 1.750 FLATHEAD SCREW (2) 605122 3/8-16 C-LOCK NUT	(2) 605133 3/8 FLAT WASHER (2) 605971 BLACK CABLE TIE W/ OVAL TREE
TOOLS REQUIRED	
JACK JACK STANDS TORQUE WRENCH 6MM ALLEN WRENCH	5/32" ALLEN WRENCH 9/16" SOCKET / WRENCH 15MM SOCKET / WRENCH 18MM SOCKET / WRENCH
TECH NOTES	
1. THE SUPPLIED COIL SHIM IS USED TO ACCOUNT FOR THE DIFFERENCE IN HEIGHTS FROM SIDE TO SIDE AND CORRECT A PASSENGER SIDE LEAN.	



WARNING!
<p>** READ ALL INSTRUCTIONS THOROUGHLY FROM START TO FINISH BEFORE BEGINNING INSTALLATION! IF THESE INSTRUCTIONS ARE NOT PROPERLY FOLLOWED SEVERE FRAME, SUSPENSION AND TIRE DAMAGE MAY RESULT TO THE VEHICLE!</p> <p>** ICON VEHICLE DYNAMICS RECOMMENDS THAT YOU EXERCISE EXTREME CAUTION WHEN WORKING UNDER A VEHICLE THAT IS SUPPORTED WITH JACK STANDS.</p> <p>** ICON VEHICLE DYNAMICS RECOMMENDS ALL INSTALLATION TO BE PERFORMED BY A PROFESSIONAL SHOP/SERVICE TECHNICIAN. PRODUCT FAILURE CAUSED BY IMPROPER INSTALLATION WILL NOT BE COVERED UNDER ICON'S WARRANTY POLICY.</p>

INSTALLATION

1. Using a properly rated jack, raise the front of the vehicle and support the frame rails with jack stands. Ensure the jack stands are secure and set properly before lowering the jack. NEVER WORK UNDER AN UNSUPPORTED VEHICLE. Remove the front wheels.
2. Remove the sway bar links from the axle using (2) 18mm wrenches. Remove the front sway bar links from the sway bar using a 6mm allen wrench and an 18mm. [FIGURE 1]

FIG.1



FIG.2



3. Remove the nut from the brake line bracket, then slide the bracket off of the stud on the lower link using a 15mm. Slide the brake line in the bracket to gain some extra slack. [FIGURE 2]

4. Remove the nut from the front lower shock mount using an 18mm. [FIGURE 3]

FIG.3

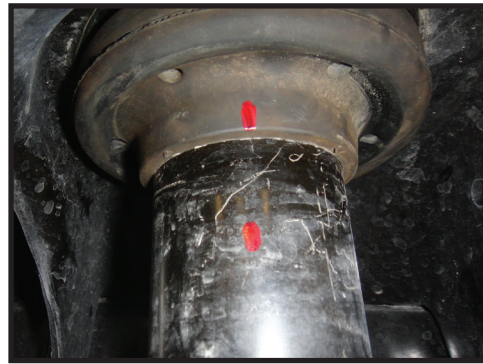
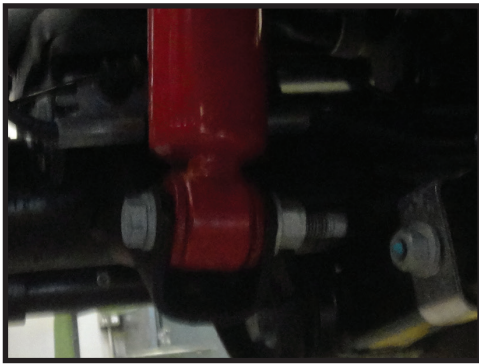


FIG.4

5. Support the axle with a jack to remove the tension from the lower shock mount and remove the factory shock bolt. **RUBICON ONLY*** Disconnect the front locker plug from the differential and remove the clip from the upper link arm.

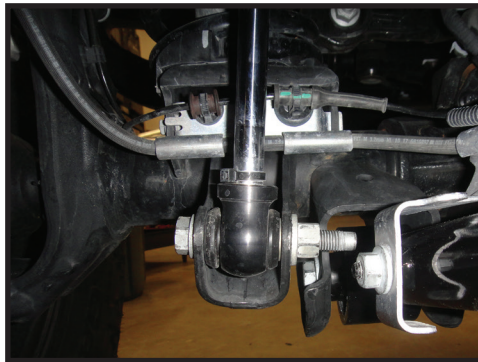
6. With a marker, make a line on the coil isolator and coil bucket to indicate isolator clocking. Carefully lower the front axle until the coil springs can be removed. Use caution to not overextend any brake or ABS lines when lowering the axle. [FIGURE 4]

7. Remove the front coil springs. Make sure the upper and lower coil isolators are still in place with locating prongs in holes on driver's side. Remove locating pins from passenger side isolator to install supplied shim. Install the supplied (128005) coil shim between the upper isolator and coil bucket on the passenger side. Remove tip from the factory coil isolator so that the shim can be installed.

8. Install the (128503) coil springs, taking care to seat the coil properly in the upper and lower isolators as well as align the mark made in step 6 on passenger side. It will be necessary to lower the front axle further to install the new coils. Be careful to not damage any lines when lowering the axle. Verify that the coil springs are properly oriented.

9. With the new coil springs installed, lift the axle enough to install the longer shocks using the factory hardware and an 18mm. [Torque to factory spec] [FIGURE 5]

FIG.5



10. Slide the brake line in the steel bracket to gain extra slack with the suspension fully extended. Connect the brake line bracket to the front lower link using the factory nut and a 15mm. [Torque to factory spec]

11. Slide the bump stop spacer through the coil spring. Make sure that the spacer is centered on the striker pad. Fasten the bump stop spacer to the striker pad using the supplied 3/8" hardware. On the passenger side, the nut is hard to reach. It is helpful to remove the brake line bracket from the back side of the coil spring mount using a 10mm. [Torque to 30 ft-lbs] [FIGURE 6]

FIG.6

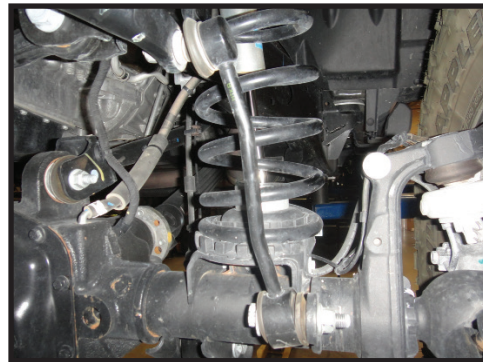


FIG.7

12. *****WRANGLER JL ONLY***** Mount the factory rear sway bar links (to the front axle housing) using factory hardware and a 6mm allen wrench and an 18mm. [Torque to factory spec] [FIGURE 7] **RUBICON ONLY*** Use the supplied oval tree cable ties to allow extra slack for the front differential locker wiring harness at full suspension extension.

NOTE: *WRANGLER JL ONLY***** ICON supplies longer rear sway bar links with the rear coil spring kit (22026).

13. Install the wheels and lower the vehicle back to the ground. [Torque lugs to factory spec]

VERIFY ALL FASTENERS ARE PROPERLY TORQUED BEFORE DRIVING VEHICLE.

RETORQUE ALL NUTS, BOLTS AND LUGS AFTER 100 MILES AND PERIODICALLY THEREAFTER.

ICON VEHICLE DYNAMICS LIMITED LIFETIME WARRANTY

ICON Vehicle Dynamics warrants to the original retail purchaser who owns the vehicle on which the product was originally installed. ICON Vehicle Dynamics does not warrant the product for finish, alterations, modifications and/or installation contrary to ICON Vehicle Dynamics instructions. ICON Vehicle Dynamics products are not designed, nor are they intended to be installed on vehicles used in race applications, for racing purposes or for similar activities. (A "race" is defined as any contest between two or more vehicles, or a contest of one or more vehicles against the clock, whether or not such contest is for a prize). This warranty does not include coverage for police or taxi vehicles, race vehicles, or vehicles used for government or commercial purposes. Also excluded from this warranty are sales outside of the United States of America and Canada.

ICON Vehicle Dynamics' obligation under this warranty is limited to the repair or replacement, at ICON Vehicle Dynamics' discretion, of the defective product. Any and all costs of removal, installation or re-installation, freight charges and incidental or consequential damages are expressly excluded from this warranty. Items that are subject to wear are not considered defective when worn and are not covered.

ICON Vehicle Dynamics components must be installed as a complete kit as shown in our current application guide. Any substitutions or exemptions of required components will immediately void the warranty. Some finish damage may happen to parts during shipping and is not covered under warranty.

This warranty is expressly in lieu of all other warranties expressed or implied. This warranty shall not apply to any product that has been improperly installed, modified or customized subject to accident, negligence, abuse or misuse.



ICON VEHICLE DYNAMICS®
PERFORMANCE SUSPENSION SYSTEMS AND SHOCK ABSORBERS

7929 Lincoln Ave. Riverside, CA 92504 Phone: 951.689.ICON Fax: 951.689.1016
www.iconvehicledynamics.com



FOLLOW US ON FACEBOOK!



PART #	DESCRIPTION
22026	18-UP JEEP JL 2.5" LIFT REAR DUAL RATE SPRING KIT

COMPONENTS INCLUDED

(2) 124059 SWAY BAR LINK 10.250 OFFSET (2) 128001 18-UP JL REAR BUMP STOP SPACER (1) 128006 18-UP JL .25" REAR COIL SHIM	(2) 128513 18-UP JL 2.5" REAR COIL SPRING (1) 22026H 18-UP JL 2.5" REAR HARDWARE KIT
--	---

HARDWARE INCLUDED

22026H HARDWARE KIT

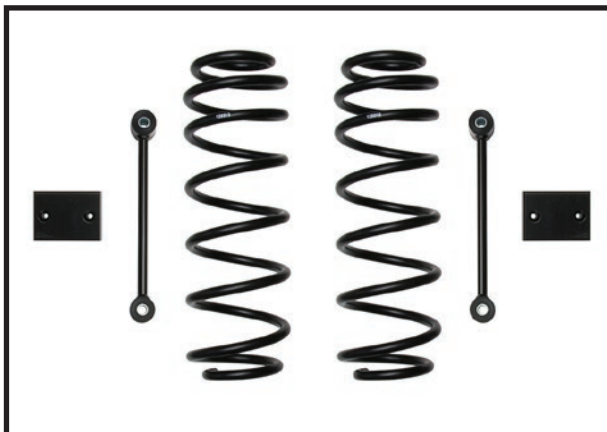
(4) 605075 5/16-18 X 1.500 FLATHEAD SCREW (4) 605076 5/16-18 C-LOCK NUT (3) 605016 5/16 FLAT WASHER (8) 297024 HAT BUSHING 1.005 X .620 X .755	(4) 139001 SLEEVE .625 X .508 X 1.625 (2) 605854 M12-1.75 X 70MM CAP SCREW (2) 605838 M12-1.75 FLANGED NYLOCK NUT
---	---

TOOLS REQUIRED

JACK JACK STANDS PLIERS FLATHEAD SCREW DRIVER TORQUE WRENCH	5/32" ALLEN WRENCH 1/2" SOCKET / WRENCH 16MM SOCKET / WRENCH 18MM SOCKET / WRENCH
---	--

TECH NOTES

1. THE SUPPLIED COIL SHIM IS USED TO ACCOUNT FOR THE DIFFERENCE IN HEIGHTS FROM SIDE TO SIDE AND CORRECT A PASSENGER SIDE LEAN.



WARNING!

**** READ ALL INSTRUCTIONS THOROUGHLY FROM START TO FINISH BEFORE BEGINNING INSTALLATION! IF THESE INSTRUCTIONS ARE NOT PROPERLY FOLLOWED SEVERE FRAME, SUSPENSION AND TIRE DAMAGE MAY RESULT TO THE VEHICLE!**

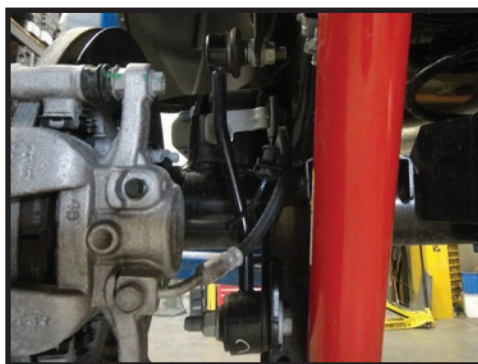
**** ICON VEHICLE DYNAMICS RECOMMENDS THAT YOU EXERCISE EXTREME CAUTION WHEN WORKING UNDER A VEHICLE THAT IS SUPPORTED WITH JACK STANDS.**

**** ICON VEHICLE DYNAMICS RECOMMENDS ALL INSTALLATION TO BE PERFORMED BY A PROFESSIONAL SHOP/SERVICE TECHNICIAN. PRODUCT FAILURE CAUSED BY IMPROPER INSTALLATION WILL NOT BE COVERED UNDER ICON'S WARRANTY POLICY.**

INSTALLATION

1. Using a properly rated jack, raise the rear of the vehicle and support the frame rails with jack stands. Ensure the jack stands are secure and set properly before lowering the jack. NEVER WORK UNDER AN UNSUPPORTED VEHICLE. Remove the rear wheels.
2. Remove the sway bar links from the axle using (2) 18mm. Remove the sway bar links from the sway bar using a 6mm allen wrench and an 18mm. Set the links aside as they will be reused in the front. [FIGURE 1]

FIG.1



3. Remove the parking brake cable from the brake drum link using pliers. Remove the parking brake cable front the axle housing using a flathead screw driver, push the spring catch inward to release it from the mount. [FIGURE 2 & 3]

FIG.2



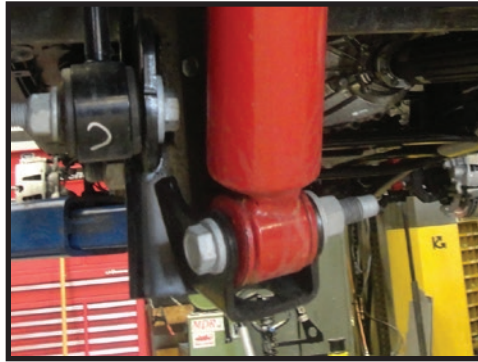
FIG.3



4. RUBICON ONLY* Disconnect the rear locker plug on the rear differential.

5. Loosen the lower shock mount bolt using an 18mm socket/wrench. [FIGURE 4]

FIG.4



6. Using a floor jack, lift the axle enough to remove the tension from the lower mount, then remove the shock bolts. Slowly lower the axle taking care to not overextend or damage any lines. Lower the axle enough to remove the tension from the coil springs.

7. Remove the coil springs and remove the upper spring isolator from the coil spring. [FIGURE 5 & 6]

FIG.5



FIG.6



8. Place the upper spring isolators on the supplied (128513) spring and install. Install the coil spring with the part number right side up to ensure that the spring is not installed upside down. Check to make sure the end of the pigtail is seated properly on the isolator. Install the supplied coil spring shim on the passenger side, on top of the isolator.

9. Lift the axle while locating the pin on the upper spring isolator into the hole in the spring seat. Also, make sure the center of the isolator catches and centers on the cone in the spring seat. If installed incorrectly, the spring isolator will not be centered on the cone of the spring seat and may result in damage as well as lift height variance. [FIGURE 7]

FIG.7



FIG.8



10. Mount the ICON shocks using the supplied hardware and two 18mm socket/wrenches. [Torque to factory spec] [FIGURE 8]

11. Fasten the bump stop spacers to the bump stop striker pads using the supplied 5/16" hardware. Use a 5/32" allen and a 1/2" open end wrench. [Torque to 17 ft-lbs]

12. Grease the rear sway bar link bushings and sleeves then assemble the rear sway bar links. Mount the sway bar links using the supplied hardware with a 16mm and 18mm socket/wrench. Ensure that the head of the bolt is facing towards the wheel. [Torque to 65 ft-lbs]. Use the factory lower bolt to mount the sway bar link to the axle. [Torque to factory spec] [FIGURE 9 & 10]

FIG.9



FIG.10



13. RUBICON ONLY* Plug in the rear locker connector on the rear differential.

14. Connect the parking brake cable to the axle mount and the brake drum link. [FIGURE 11]

FIG.11



15. Install the wheels and lower the vehicle to the ground. [Torque lugs to factory spec]

VERIFY ALL FASTENERS ARE PROPERLY TORQUED BEFORE DRIVING VEHICLE.

RETORQUE ALL NUTS, BOLTS AND LUGS AFTER 100 MILES AND PERIODICALLY THEREAFTER.

ICON VEHICLE DYNAMICS LIMITED LIFETIME WARRANTY

ICON Vehicle Dynamics warrants to the original retail purchaser who owns the vehicle on which the product was originally installed. ICON Vehicle Dynamics does not warrant the product for finish, alterations, modifications and/or installation contrary to ICON Vehicle Dynamics instructions. ICON Vehicle Dynamics products are not designed, nor are they intended to be installed on vehicles used in race applications, for racing purposes or for similar activities. (A "race" is defined as any contest between two or more vehicles, or a contest of one or more vehicles against the clock, whether or not such contest is for a prize). This warranty does not include coverage for police or taxi vehicles, race vehicles, or vehicles used for government or commercial purposes. Also excluded from this warranty are sales outside of the United States of America and Canada.

ICON Vehicle Dynamics' obligation under this warranty is limited to the repair or replacement, at ICON Vehicle Dynamics' discretion, of the defective product. Any and all costs of removal, installation or re-installation, freight charges and incidental or consequential damages are expressly excluded from this warranty. Items that are subject to wear are not considered defective when worn and are not covered.

ICON Vehicle Dynamics components must be installed as a complete kit as shown in our current application guide. Any substitutions or exemptions of required components will immediately void the warranty. Some finish damage may happen to parts during shipping and is not covered under warranty.

This warranty is expressly in lieu of all other warranties expressed or implied. This warranty shall not apply to any product that has been improperly installed, modified or customized subject to accident, negligence, abuse or misuse.



ICON VEHICLE DYNAMICS®
PERFORMANCE SUSPENSION SYSTEMS AND SHOCK ABSORBERS

7929 Lincoln Ave. Riverside, CA 92504 Phone: 951.689.ICON Fax: 951.689.1016
www.iconvehicledynamics.com



FOLLOW US ON FACEBOOK!



PART #	DESCRIPTION
26523	18-UP JL/20-UP JT 2.0 ALUMINUM SERIES FRONT SHOCK

COMPONENTS INCLUDED	
(1) 124935 18-UP JL/20-UP JT 2.5" LIFT 2.0 FRONT SHOCK	(2) 209208 STEPPED SHOCK SLEEVE .625 X .480 X 2.750
HARDWARE INCLUDED	
N/A	
TOOLS REQUIRED	
TORQUE WRENCH	18MM SOCKET / WRENCH
TECH NOTES	
<p>1. A MINIMUM OF A 1" BUMP STOP SPACER IS REQUIRED (SUPPLIED WITH ICON COIL SPRING KIT PN: 22025).</p> <p>2. YOUR ICON SHOCK ASSEMBLIES COME FACTORY CHARGED TO 150 PSI. RELEASING NITROGEN PRESSURE MAY LEAD TO SHOCK MALFUNCTION AND REDUCED RIDE QUALITY. FAILURE CAUSED BY LOW NITROGEN PRESSURE IS NOT COVERED UNDER ICON'S WARRANTY POLICY.</p>	



WARNING!
<p>** READ ALL INSTRUCTIONS THOROUGHLY FROM START TO FINISH BEFORE BEGINNING INSTALLATION! IF THESE INSTRUCTIONS ARE NOT PROPERLY FOLLOWED SEVERE FRAME, SUSPENSION AND TIRE DAMAGE MAY RESULT TO THE VEHICLE!</p> <p>** ICON VEHICLE DYNAMICS RECOMMENDS THAT YOU EXERCISE EXTREME CAUTION WHEN WORKING UNDER A VEHICLE THAT IS SUPPORTED WITH JACK STANDS.</p> <p>** ICON VEHICLE DYNAMICS RECOMMENDS ALL INSTALLATION TO BE PERFORMED BY A PROFESSIONAL SHOP/SERVICE TECHNICIAN. PRODUCT FAILURE CAUSED BY IMPROPER INSTALLATION WILL NOT BE COVERED UNDER ICON'S WARRANTY POLICY.</p>

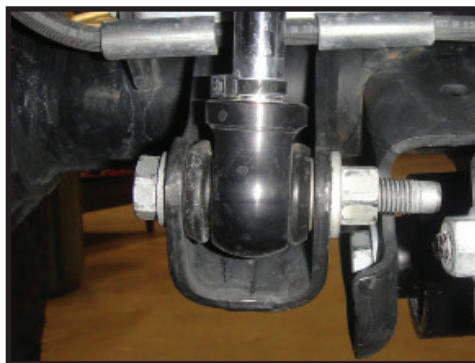
INSTALLATION

1. Place the vehicle on a smooth, level surface. Ensure that the vehicle is in PARK, engage the emergency brake, and chock the tires before performing any work to the vehicle. ICON will not be held liable for any injuries or failure caused by improper installation.
2. Remove the factory shock using an 18mm.

FIG.1



FIG.2



4. Using factory hardware and an 18mm, install the ICON front shock. [Torque to factory spec]

VERIFY ALL FASTENERS ARE PROPERLY TORQUED BEFORE DRIVING VEHICLE.

RETORQUE ALL NUTS, BOLTS AND LUGS AFTER 100 MILES AND PERIODICALLY THEREAFTER.

2.0 ALUMINUM SERIES TECHNICAL INFORMATION

MAINTENANCE

ICON shock absorbers are a high quality rebuildable race style shock absorber designed for optimal performance. With a unit of this caliber on your vehicle, routine maintenance is required to keep them looking and operating in like new condition. Residual oil and assembly lube may be present at all seal paths from the factory out of the box and is considered normal. Pooling of oil however is not acceptable at any time and one should contact the ICON dealer where purchased.

BELOW ARE GUIDELINES BASED ON HOW YOU USE YOUR VEHICLE BUT YOUR MILEAGE MAY VARY:

STREET USE:

- Send in for factory servicing every 40,000 miles or if a leak develops, ride quality decreases, or they begin to make excessive noise.
- Remove any buildup of road salt, mud, or debris from shocks anytime accrued
- Clean with mild soap and water with each oil change or anytime you notice build up.
- Wax the cylinders yearly with automotive wax to prevent corrosion.
- Check nitrogen pressure yearly. (252004 charge needle assembly available at any ICON distributor)

STREET/DIRT:

- Send in for factory servicing every 15,000 miles or if a leak develops, ride quality decreases, or they begin to make excessive noise.
- Clean with mild soap and water with each oil change, offroad trip, or anytime you notice build up.
- Wax the cylinders yearly with automotive wax to prevent corrosion.
- Check nitrogen pressure each dirt outing. (252004 charge needle assembly available at any ICON distributor)

DIRT USE:

- Send in for factory servicing every 1,000 miles.
- Check nitrogen pressure each outing. (252004 charge needle assembly available at any ICON distributor)
- Remove any buildup of mud or debris from shocks after every outing.

SELF-SERVICE:

- Contact ICON for service kits & tools at (951) 689-4266.

PRODUCT REGISTRATION

Please visit: <http://www.iconvehicledynamics.com/tech-support/registration/> to register your product.

ICON VEHICLE DYNAMICS SHOCK ABSORBER WARRANTY

This shock absorber has a 1 year warranty against any manufacturer's defects. If a shock fails within the initial year of ownership, the shock must be shipped to ICON Vehicle Dynamics for inspection and service. If a shock is inspected and it has been determined the shock failed due to neglect, damage caused by improper installation or any other reason besides "normal wear and tear", the owner of said shock is responsible for all service costs. This includes labor, parts, and shipping.

ICON Vehicle Dynamics warrants to the original retail purchaser who owns the vehicle on which the product was originally installed. ICON Vehicle Dynamics does not warrant the product for finish, alterations, modifications and/or installation contrary to ICON Vehicle Dynamics instructions. ICON Vehicle Dynamics products are not designed, nor are they intended to be installed on vehicles used in race applications, for racing purposes or for similar activities. (A "race" is defined as any contest between two or more vehicles, or a contest of one or more vehicles against the clock, whether or not such contest is for a prize). This warranty does not include coverage for police or taxi vehicles, race vehicles, or vehicles used for government or commercial purposes. Also excluded from this warranty are sales outside of the United States of America and Canada.

ICON Vehicle Dynamics' obligation under this warranty is limited to the repair or replacement, at ICON Vehicle Dynamics' discretion, of the defective product. Any and all costs of removal, installation or re-installation, freight charges and incidental or consequential damages are expressly excluded from this warranty. Items that are subject to wear are not considered defective when worn and are not covered.

ICON Vehicle Dynamics components must be installed as a complete kit as shown in our current application guide. Any substitutions or exemptions of required components will immediately void the warranty. Some finish damage may happen to parts during shipping and is not covered under warranty.

This warranty is expressly in lieu of all other warranties expressed or implied. This warranty shall not apply to any product that has been improperly installed, modified or customized subject to accident, negligence, abuse or misuse.

To send a shock in for warranty please visit our website <http://www.iconvehicledynamics.com/tech-support/shock-service/>



ICON VEHICLE DYNAMICS®
PERFORMANCE SUSPENSION SYSTEMS AND SHOCK ABSORBERS

7929 Lincoln Ave. Riverside, CA 92504 Phone: 951.689.ICON Fax: 951.689.1016
www.iconvehicledynamics.com



FOLLOW US ON FACEBOOK!



PART #	DESCRIPTION
26524	18-UP JEEP JL 2.0 ALUMINUM SERIES REAR SHOCK

COMPONENTS INCLUDED	
(1) 124936 18-UP JL 2.5" LIFT 2.0 REAR SHOCK	(2) 209208 STEPPED SHOCK SLEEVE .625 X .480 X 2.750
HARDWARE INCLUDED	
N/A	
TOOLS REQUIRED	
TORQUE WRENCH	8MM SOCKET / WRENCH 18MM SOCKET / WRENCH
TECH NOTES	
1. A MINIMUM OF A 1" BUMP STOP SPACER IS REQUIRED (SUPPLIED WITH ICON COIL SPRING KIT).	



WARNING!
<p>** READ ALL INSTRUCTIONS THOROUGHLY FROM START TO FINISH BEFORE BEGINNING INSTALLATION! IF THESE INSTRUCTIONS ARE NOT PROPERLY FOLLOWED SEVERE FRAME, SUSPENSION AND TIRE DAMAGE MAY RESULT TO THE VEHICLE!</p> <p>** ICON VEHICLE DYNAMICS RECOMMENDS THAT YOU EXERCISE EXTREME CAUTION WHEN WORKING UNDER A VEHICLE THAT IS SUPPORTED WITH JACK STANDS.</p> <p>** ICON VEHICLE DYNAMICS RECOMMENDS ALL INSTALLATION TO BE PERFORMED BY A PROFESSIONAL SHOP/SERVICE TECHNICIAN. PRODUCT FAILURE CAUSED BY IMPROPER INSTALLATION WILL NOT BE COVERED UNDER ICON'S WARRANTY POLICY.</p>

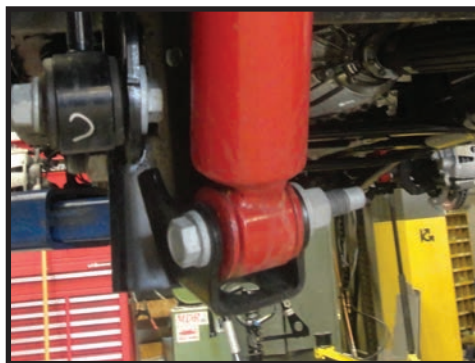
INSTALLATION

1. Place the vehicle on a smooth, level surface. Ensure that the vehicle is in PARK, engage the emergency brake, and chock the tires before performing any work to the vehicle. ICON will not be held liable for any injuries or failure caused by improper installation.
2. Remove the rear fender liner section using an 8mm.

FIG.1



FIG.2



3. Remove the factory shock using an 18mm.
4. Using factory hardware and an 18mm, install the ICON rear shock. [Torque to factory spec]
5. Reinstall the rear fender liner section using factory hardware and an 8mm.

VERIFY ALL FASTENERS ARE PROPERLY TORQUED BEFORE DRIVING VEHICLE.

RETORQUE ALL NUTS, BOLTS AND LUGS AFTER 100 MILES AND PERIODICALLY THEREAFTER.

2.0 ALUMINUM SERIES TECHNICAL INFORMATION

MAINTENANCE

ICON shock absorbers are a high quality rebuildable race style shock absorber designed for optimal performance. With a unit of this caliber on your vehicle, routine maintenance is required to keep them looking and operating in like new condition. Residual oil and assembly lube may be present at all seal paths from the factory out of the box and is considered normal. Pooling of oil however is not acceptable at any time and one should contact the ICON dealer where purchased.

BELOW ARE GUIDELINES BASED ON HOW YOU USE YOUR VEHICLE BUT YOUR MILEAGE MAY VARY:

STREET USE:

- Send in for factory servicing every 40,000 miles or if a leak develops, ride quality decreases, or they begin to make excessive noise.
- Remove any buildup of road salt, mud, or debris from shocks anytime accrued
- Clean with mild soap and water with each oil change or anytime you notice build up.
- Wax the cylinders yearly with automotive wax to prevent corrosion.
- Check nitrogen pressure yearly. (252004 charge needle assembly available at any ICON distributor)

STREET/DIRT:

- Send in for factory servicing every 15,000 miles or if a leak develops, ride quality decreases, or they begin to make excessive noise.
- Clean with mild soap and water with each oil change, offroad trip, or anytime you notice build up.
- Wax the cylinders yearly with automotive wax to prevent corrosion.
- Check nitrogen pressure each dirt outing. (252004 charge needle assembly available at any ICON distributor)

DIRT USE:

- Send in for factory servicing every 1,000 miles.
- Check nitrogen pressure each outing. (252004 charge needle assembly available at any ICON distributor)
- Remove any buildup of mud or debris from shocks after every outing.

SELF-SERVICE:

- Contact ICON for service kits & tools at (951) 689-4266.

PRODUCT REGISTRATION

Please visit: <http://www.iconvehicledynamics.com/tech-support/registration/> to register your product.

ICON VEHICLE DYNAMICS SHOCK ABSORBER WARRANTY

This shock absorber has a 1 year warranty against any manufacturer's defects. If a shock fails within the initial year of ownership, the shock must be shipped to ICON Vehicle Dynamics for inspection and service. If a shock is inspected and it has been determined the shock failed due to neglect, damage caused by improper installation or any other reason besides "normal wear and tear", the owner of said shock is responsible for all service costs. This includes labor, parts, and shipping.

ICON Vehicle Dynamics warrants to the original retail purchaser who owns the vehicle on which the product was originally installed. ICON Vehicle Dynamics does not warrant the product for finish, alterations, modifications and/or installation contrary to ICON Vehicle Dynamics instructions. ICON Vehicle Dynamics products are not designed, nor are they intended to be installed on vehicles used in race applications, for racing purposes or for similar activities. (A "race" is defined as any contest between two or more vehicles, or a contest of one or more vehicles against the clock, whether or not such contest is for a prize). This warranty does not include coverage for police or taxi vehicles, race vehicles, or vehicles used for government or commercial purposes. Also excluded from this warranty are sales outside of the United States of America and Canada.

ICON Vehicle Dynamics' obligation under this warranty is limited to the repair or replacement, at ICON Vehicle Dynamics' discretion, of the defective product. Any and all costs of removal, installation or re-installation, freight charges and incidental or consequential damages are expressly excluded from this warranty. Items that are subject to wear are not considered defective when worn and are not covered.

ICON Vehicle Dynamics components must be installed as a complete kit as shown in our current application guide. Any substitutions or exemptions of required components will immediately void the warranty. Some finish damage may happen to parts during shipping and is not covered under warranty.

This warranty is expressly in lieu of all other warranties expressed or implied. This warranty shall not apply to any product that has been improperly installed, modified or customized subject to accident, negligence, abuse or misuse.

To send a shock in for warranty please visit our website <http://www.iconvehicledynamics.com/tech-support/shock-service/>



ICON VEHICLE DYNAMICS®
PERFORMANCE SUSPENSION SYSTEMS AND SHOCK ABSORBERS

7929 Lincoln Ave. Riverside, CA 92504 Phone: 951.689.ICON Fax: 951.689.1016
www.iconvehicledynamics.com



FOLLOW US ON FACEBOOK!

