



REPLACEMENT HOOD LATCH KIT

(1997-2006 WRANGLER TJ)

INSTALLATION INSTRUCTIONS

CONTENTS

(2) Hood Latch Kits
(4) M6 Locking Nuts
(4) M6 Flat Washers
(2) M8 Locking Nuts
(2) M8 Flat Washers

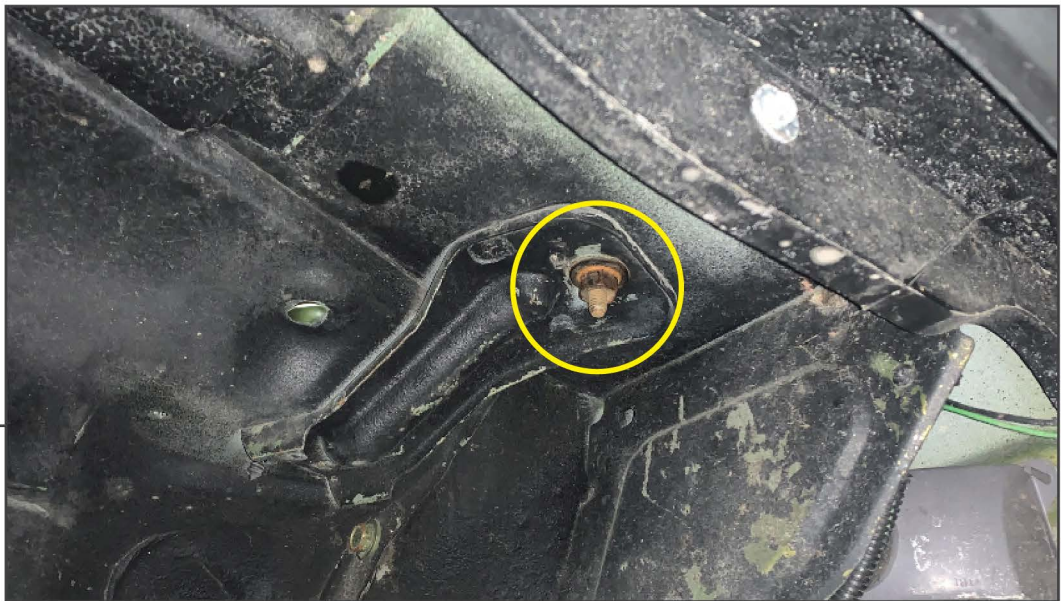
TOOLS REQUIRED

13mm Socket
10mm Socket
Ratchet

SKU # J146290

**STEP 1**

Open the hood on the vehicle. Remove (2) 10mm nuts from hood mounted portion of the latch system.

**STEP 2**

Remove (1) 13mm nut from below the fender to remove the lower portion of the latch system.

STEP 3

Align the upper portion of the new latch system to the hood. Using (2) M6 flat washers and (2) M6 locking nuts, secure the upper portion of the latch system to the hood.

STEP 4

Using (1) M8 flat washer and (1) M8 locking nut, secure the lower portion of the hood latch system.

Note: If the hood grommet interferes with the lower latch system, place the grommet over the tab on the latch system.



STEP 5

Installation is now complete.