



TRAIL RUNNER REAR BUMPER WITH LED LIGHTS

(2018-2025+ WRANGLER JL)

INSTALLATION INSTRUCTIONS

CONTENTS

- (1) Trail Runner Rear Bumper
- (2) LED Lights
- (1) Wiring Harness
- (2) 3/4" D-Rings
- (1) License Plate Bracket
- (2) LED License Plate Bolts
- (1) Frame Rail Bracket
- (4) Semi-Circle Foam Spacer
- (4) Sensor Plug
- (4) Foam Rings
- (4) Backup Sensor Cap
- (2) 9/16-18 x 1.5" Bolts
- (2) 9/16 Lock Washers
- (2) 9/16 Fat Washers
- (2) M8 Allen Bolts
- (4) M8 Flat Washers
- (2) M8 Locking Nuts
- (10) M6 x 15mm Bolts
- (2) M6 Flat Washers
- (10) M6 Flange Nuts
- (8) Phillips Head Screws
- (1) Small Allen Key
- (1) Large Allen Key

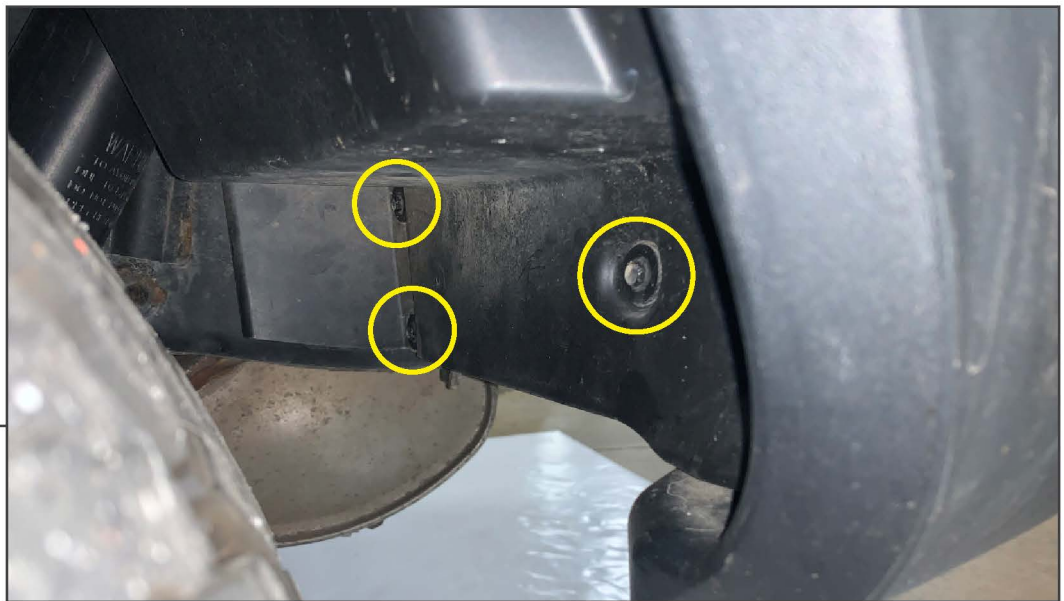
TOOLS REQUIRED

- 8mm, 10mm, 16mm, 18mm,
21mm Sockets
- Socket Wrench
- Panel Removal Tool
- Wire Stripping Pliers

SKU # J145337-JL

**STEP 1**

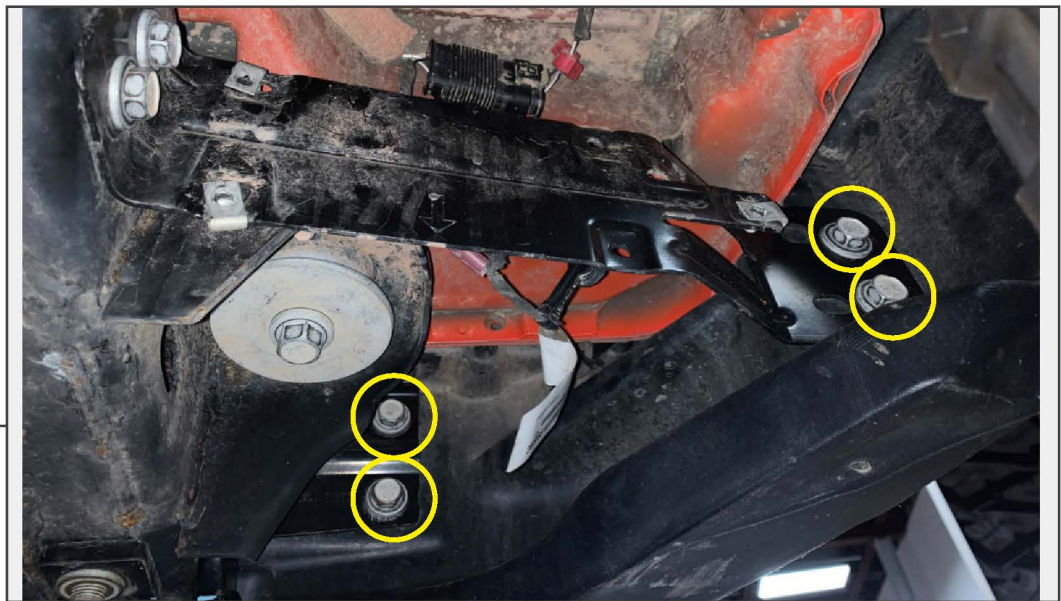
Remove the spare tire camera cover, then remove the spare tire from the vehicle.

**STEP 2**

Behind the rear tire, remove (3) 8mm screws holding the bumper plastic liner in place. Once all screws are removed, pull the liner out and set aside. Repeat this procedure to the opposite side.

**STEP 3**

With the bumper liner removed, use a panel removal tool to dislodge the connector from the vehicle. Unplug the harness from the connector.

**STEP 4**

Remove (4) 16mm bolts from the backside of the bumper. Repeat this procedure for the opposite side. Remove the bumper from the vehicle.

**STEP 5**

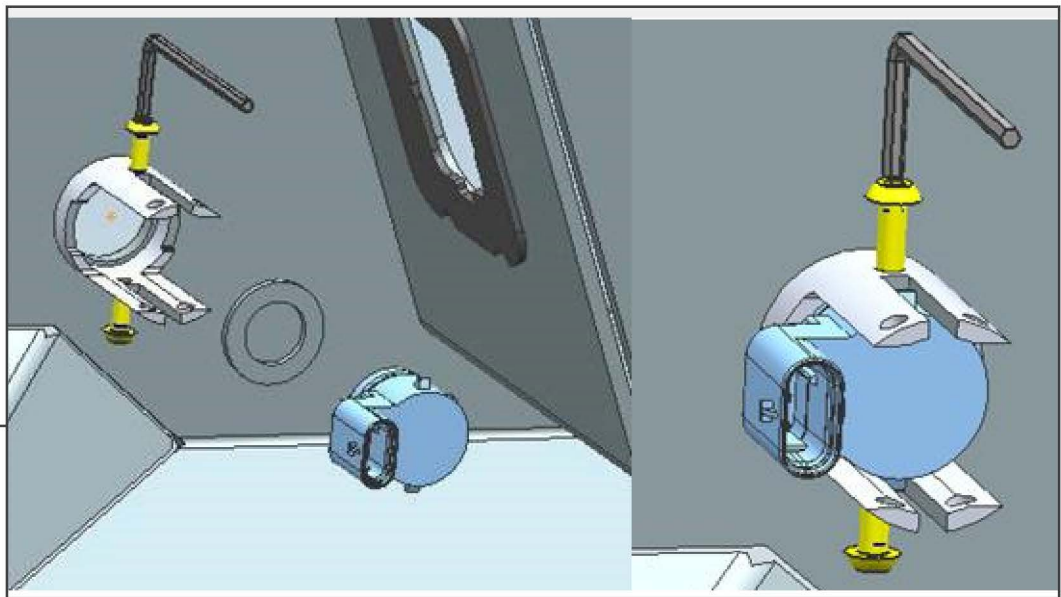
Remove (2) 16mm bolts from the original outer bumper bracket. Remove the bracket from the vehicle. Repeat this procedure to the opposite side.

**STEP 6**

Remove (4) 21mm bolts to remove the inner bumper bracket and tow hook on the driver side. Remove (2) 21mm bolts to remove the inner bumper bracket on the passenger side.

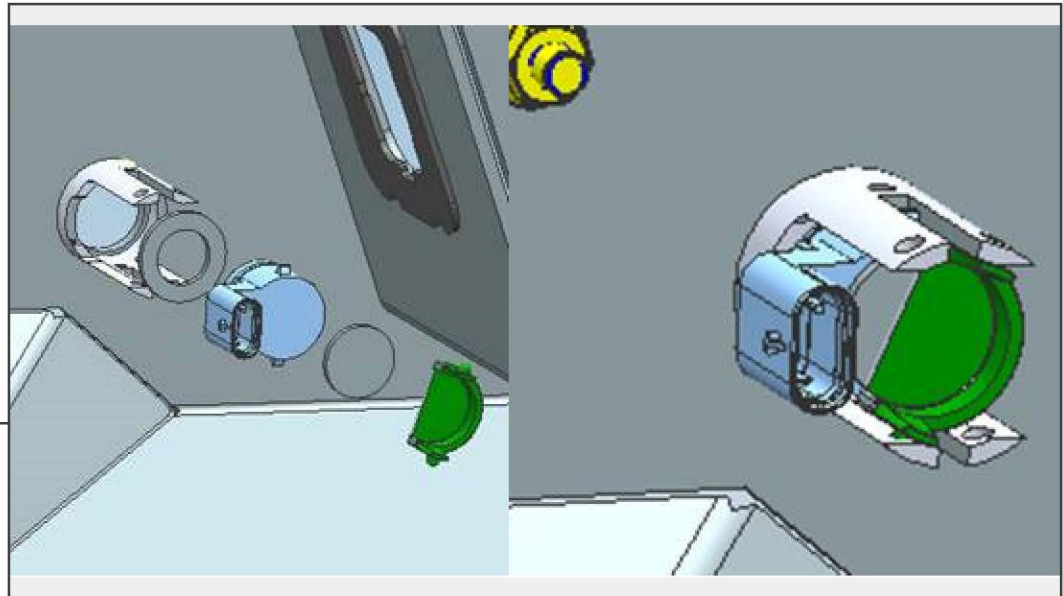
STEP 7

Optional: If equipped with back up sensors, remove the sensors from the bumper. Then remove the rubber gasket from the sensor. Prepare the sensor for re-installation by applying the supplied foam ring to the sensor. Then reference the Step 7 or 8 for the mounting options.

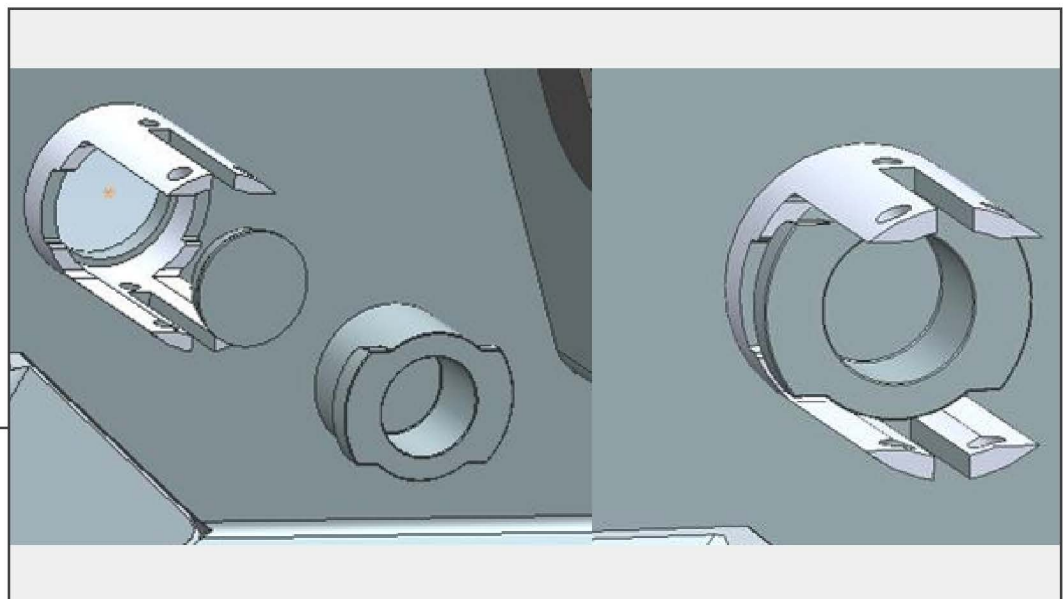
STEP 8

Optional Sensor Mounting: Using the provided M4 Allen screws lightly tighten the screws into the sensor to hold it in place.

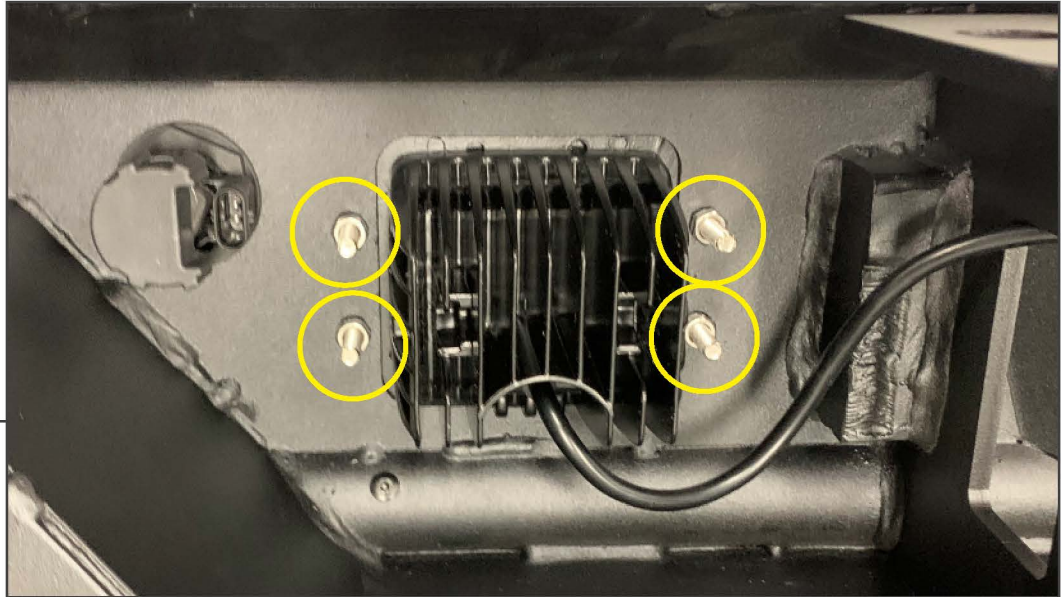
**Note: Over tightening the screws can damage the sensor.

STEP 9

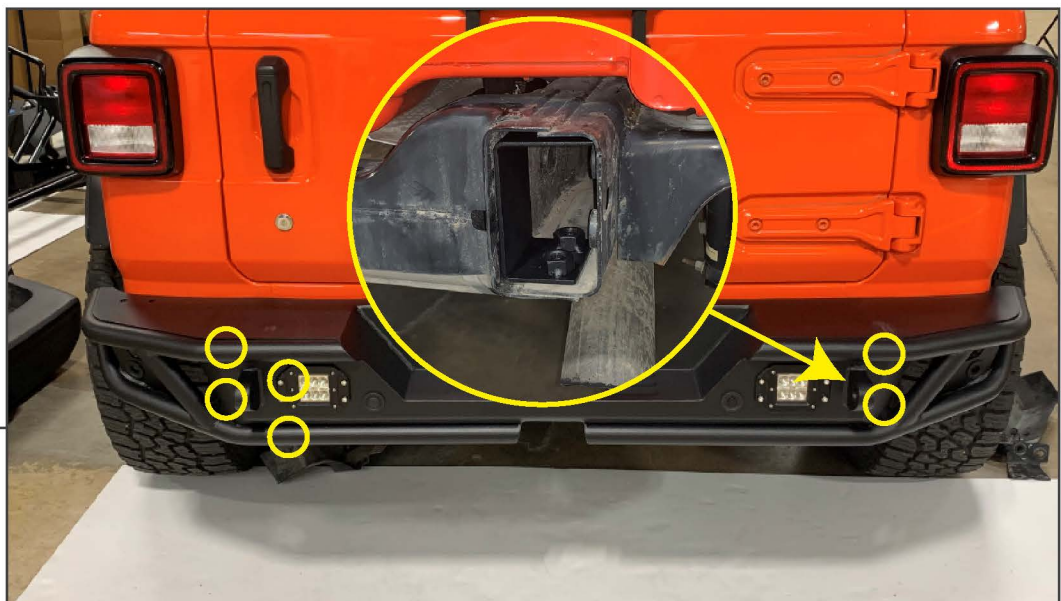
Optional Sensor Mounting: Place the round foam on the back of the sensor. Press the sensor into the bumper. Then clip the retaining plate onto the bumper to hold the sensor in place.

STEP 10

No Sensor: Mount the hard rubber plug to the front of the soft rubber plug. Press the assembly into the bumper so that the hard rubber plug is flush with the face of the bumper.

**STEP 11**

Install the LED lights into the bumper using provided (4) M6 x 15mm Allen bolts and M6 flange nuts per light.

**STEP 12**

Place the frame rail bracket inside the passenger side frame rail on the vehicle. Align the bumper up to the vehicle and install the original frame rail bolts through the bumper on both sides. Using the (2) 9/16-18 bolts, lock washers, and flat washers, tighten the bumper to the frame rail bracket.



STEP 13

Securely tighten all bumper mounting hardware to finalize mounting the bumper.



STEP 14

Using (2) M8 Allen bolts, (4) M8 flat washers, and (2) M8 locking nuts, secure the license plate bracket to the top of the bumper.

STEP 15

Using (2) LED license plate bolts, (2) M6 x 15mm bolts, and (2) M6 flange nuts, secure the license plate to the license plate bracket.

STEP 16

Splice the LED license plate bolts into the vehicle's license plate lighting harness previously unplugged in step 3 using the diagram below.

<u>Vehicle Harness</u>	-	<u>License Plate Bolt Harness</u>
White/Blue	-	Red
Black	-	Black

**STEP 17**

Route the bumper LED light harness towards the front of the vehicle. Attach the power (Red) and ground (Black) leads to the designated terminals on the battery. Route the switch to the interior through a suitable firewall grommet.

Installation is now complete.