



TRAIL RUNNER FRONT BUMPER WITH LED LIGHTS

(2018-2021 WRANGLER JL, 2020+ GLADIATOR)

INSTALLATION INSTRUCTIONS

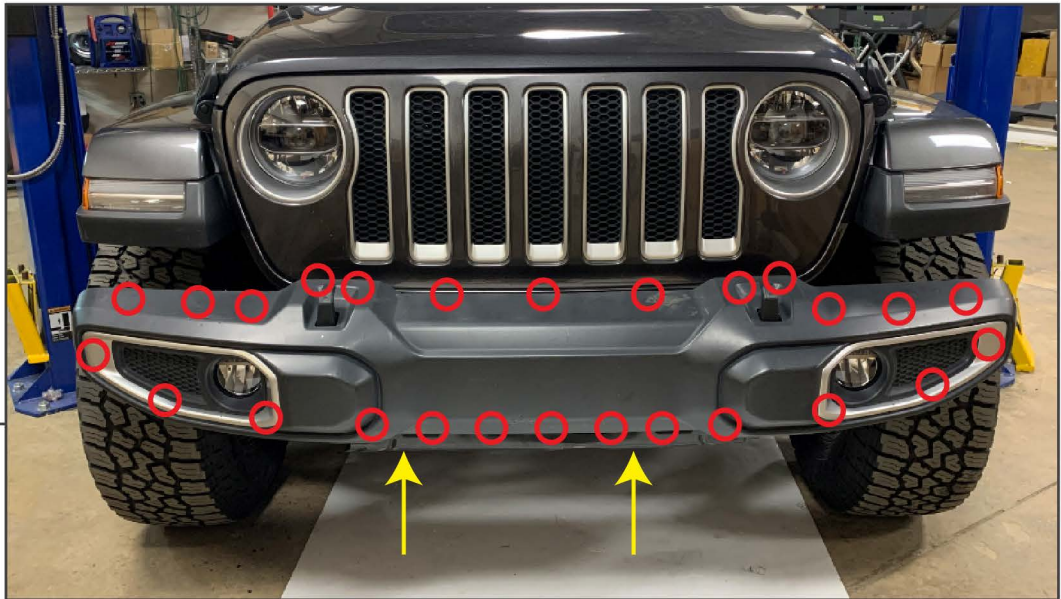
CONTENTS

- (1) Front Bumper
- (2) 3/4"D-Rings
- (2) LED Flood Lights
- (1) LED Light Bar
- (2) LED Light Harnesses
- (2) Light Bar Brackets
- (2) Skid Plate Brackets
- (4) Plastic Stud Holders
- (2) Bumper Mounting Spacers
- (2) 3mm Spacers
- (1) 8mm Spacers
- (4) M12 x 35mm Stud Plates
- (4) M12 x 35mm Bolts
- (2) M12 x 130mm Bolts
- (12) M12 Flat Washers
- (10) M12 Lock Washers
- (6) M12 Nuts
- (4) M10 x 30mm Bolt
- (4) M10 Lock Washer
- (4) M10 Flat Washer
- (2) M10 Nut Plates
- (2) M10 Nuts
- (2) M8 x 25mm Allen Bolts
- (2) M8 x 16mm Allen Bolts
- (2) M8 x 35mm Stud Plates (Not Used in Application)
- (8) M8 Flat Washers
- (6) M8 Lock Washers
- (4) M8 Nuts
- (5) M6 x 20mm Allen Bolts
- (8) M6 x 16 Allen Bolts
- (12) M6 Nuts

TOOLS REQUIRED

- 7mm Socket
- 8mm Socket
- 16mm Socket
- 18mm Socket
- Socket Wrench
- Panel Removal Tool

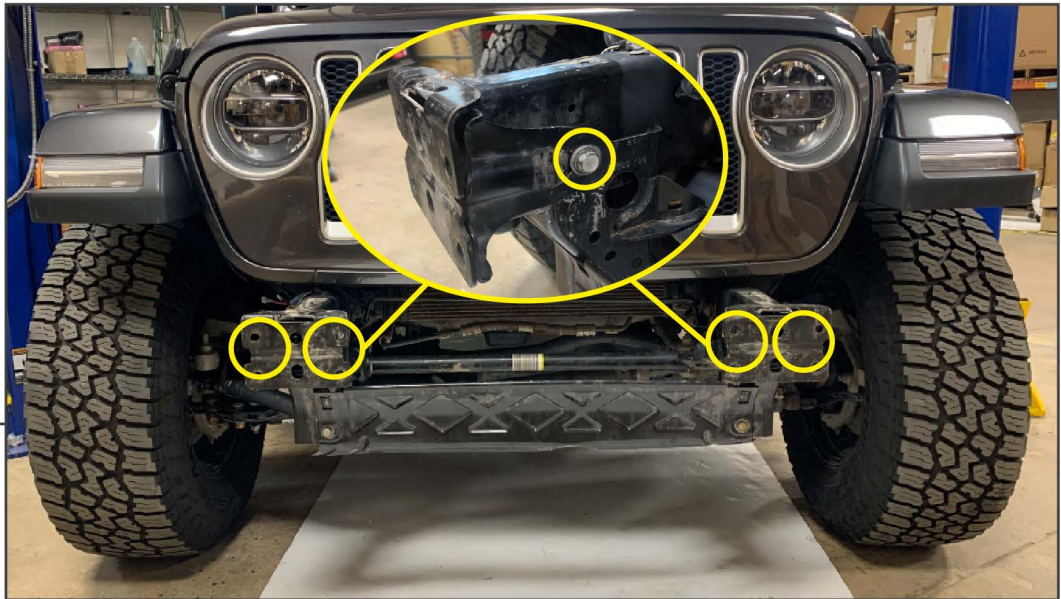
SKU # J145270

STEP 1

Remove all the plastic push clips from the backside of the bumper using a panel removal tool. Use the (2) 8mm bolts from the bottom of the plastic splash shield under the vehicle.

STEP 2

With the plastic shields removed, unplug the main fog light connector from the passenger side frame rail to disconnect both fog lights. Remove (8) 18mm nuts from the original bumper. Remove the bumper from the vehicle.



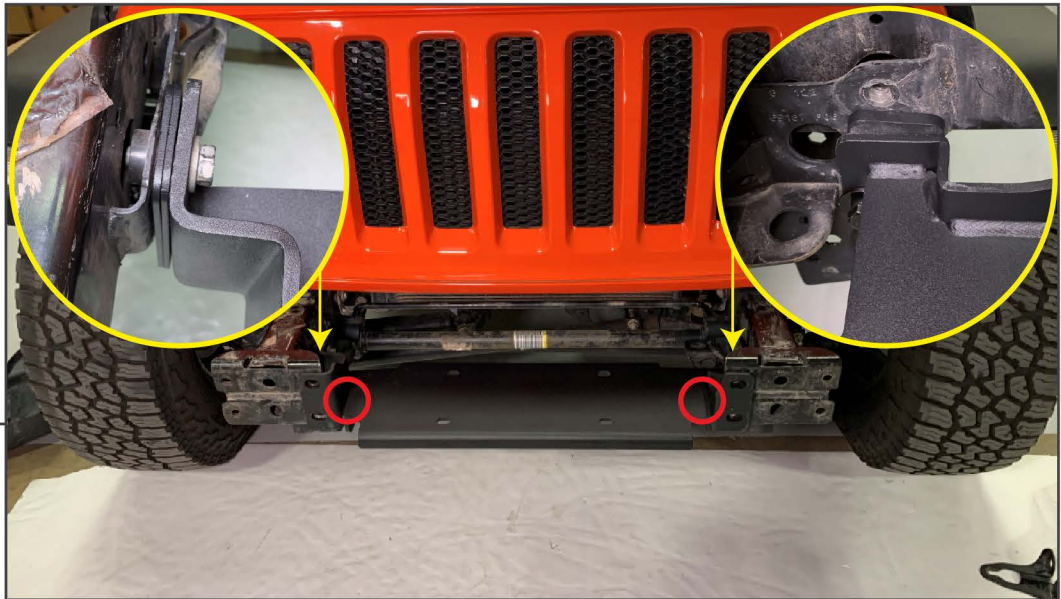
STEP 3

Remove (4) 16mm bolts to remove the inner and outer bumper support brackets.



STEP 4

Remove (2) 16mm bolts from the vehicle's skid plate. Lift and remove the skid plate from the vehicle.

**STEP 5**

Align the winch plate in between the vehicle frame rails. Install (1) 8mm spacer on the driver side, and (2) 3mm spacers on the passenger side in between the winch plate and the frame rail. Install the bottom of the winch plate to the frame using (1) M12 x 130mm bolt, (1) M12 lock washers, (2) M12 flat washers, and (1) M12 nut per side. Insert the bolts through the frame rail and winch plate.

**STEP 6**

Secure the passenger side upper portion of the winch plate using (1) M10 x 30mm bolt, (1) M10 lock washer, and (1) M10 flat washer. Thread the bolt into the pre-threaded hole in the vehicle.

**STEP 7**

Place (4) M12 x 35mm stud plates and into the inner and outer sections of the bumper. Hold the studs in place using the (4) plastic stud holders. Add (1) bumper spacer to each of the outer stud plates. Align the bumper to the vehicle and secure to the bumper using the (4) M12 x 35mm bolts, (8) M12 lock washers, and (8) M12 flat washers, and (4) M12 nuts

**STEP 8**

Install the (2) LED flood lights using (4) M6 Allen bolts and (4) M6 nuts per light.

**STEP 9**

Loosely install the (2) skid plate brackets to the vehicle's original skid plate mounting location using (2) original vehicle skid plate bolts.

**STEP 10**

Use (5) M6 x 20mm Allen bolts, (5) lock washers, (5) flat washers, and (4) M6 nuts to secure the skid plate to the vehicle. Tighten all bolts until secure.

**STEP 11**

Secure the (2) light bar brackets to the bumper using (2) M8 x 25mm Allen bolts, (2) M8 lock washers, (2) M8 flat washers, and (2) M8 nuts. Secure the light bar to the brackets using (2) M8 x 16mm Allen bolts, (2) M8 lock washers, and (2) M8 flat washers. Using the provided wiring harnesses, connect the lights to the vehicle.

Installation is now complete.



TRAIL RUNNER FRONT BUMPER WITH LED LIGHTS

(2007-2018 WRANGLER JK)

INSTALLATION INSTRUCTIONS

CONTENTS

- (1) Front Bumper
- (2) 3/4"D-Rings
- (2) LED Flood Lights
- (1) LED Light Bar
- (2) LED Light Harnesses
- (2) Light Bar Brackets
- (2) Skid Plate Brackets
- (4) Plastic Stud Holders
- (2) Bumper Mounting Spacers
- (2) 3mm Spacers (Not Used in Application)
- (1) 8mm Spacers (Not Used in Application)
- (4) M12 x 35mm Stud Plates
- (4) M12 x 35mm Bolts
- (2) M12 x 130mm Bolts
- (12) M12 Flat Washers
- (10) M12 Lock Washers
- (6) M12 Nuts
- (4) M10 x 30mm Bolts
- (4) M10 Lock Washers
- (4) M10 Flat Washers
- (2) M10 Nut Plates
- (2) M10 Nuts
- (2) M8 x 25mm Allen Bolts
- (2) M8 x 16mm Allen Bolts
- (2) M8 x 35mm Stud Plates
- (8) M8 Flat Washers
- (6) M8 Lock Washers
- (4) M8 Nuts
- (5) M6 x 20mm Allen Bolts
- (8) M6 x 16 Allen Bolts
- (12) M6 Nuts

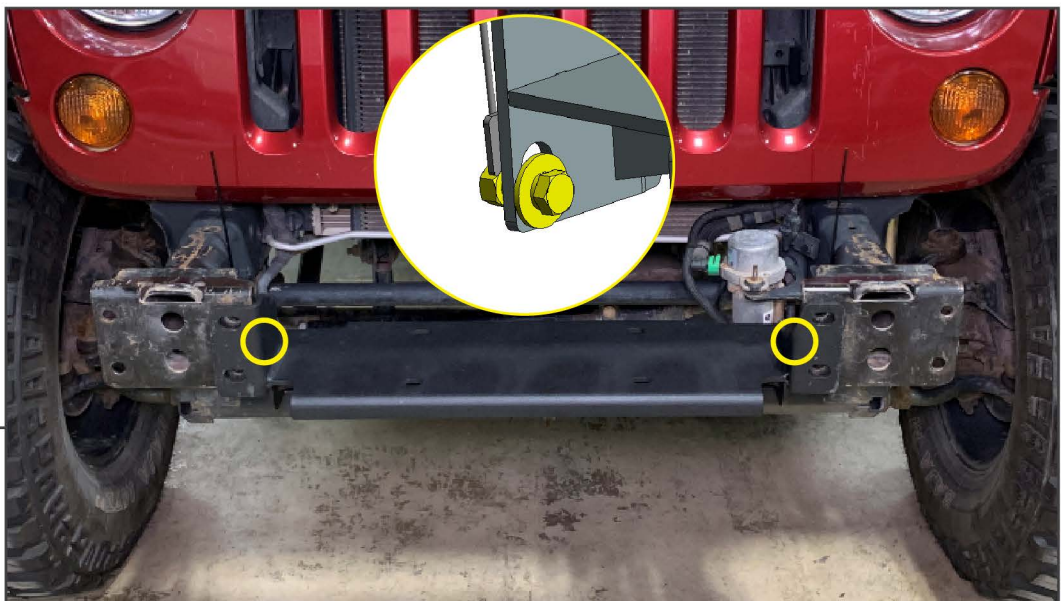
TOOLS REQUIRED

- 7mm Socket
- 8mm Socket
- 16mm Socket
- 18mm Socket
- Socket Wrench
- Panel Removal Tool

SKU # J145270

**STEP 1**

Remove (2) plastic push clips from the upper plastic trim panel behind the bumper. Unplug the fog lights from the bumper. Remove (8) 18mm nuts from the back side of the bumper. Remove the bumper from the vehicle.

**STEP 2**

Place the winch in between the frame rails with the front over-top of the bumper mounting pad. Secure the winch plate using (2) M10 x 30mm bolts, (2) M10 lock washers, (2) M10 flat washers, and (2) M10 nut plates.

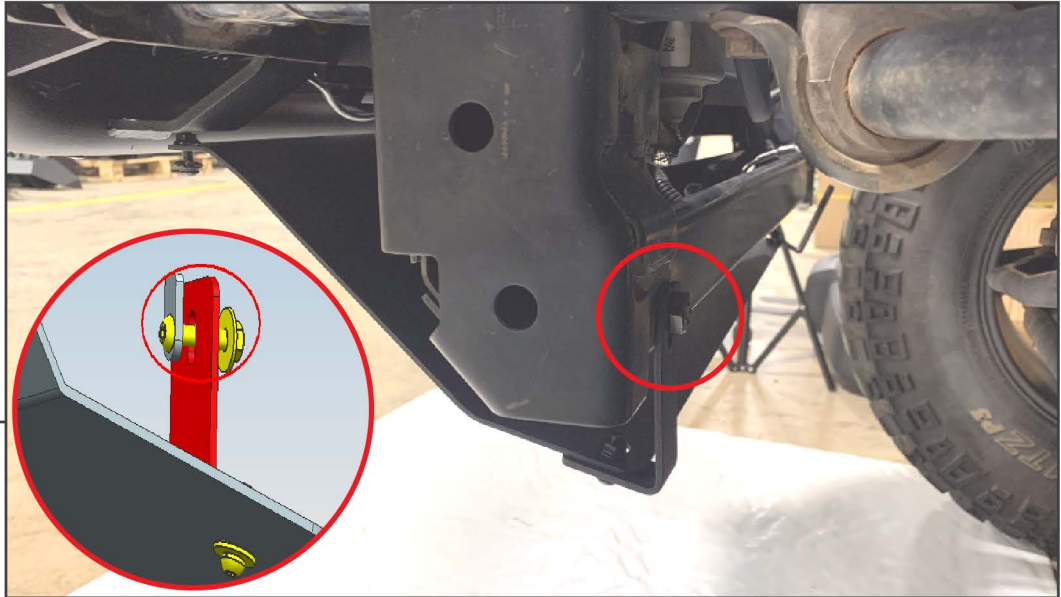
Note: Use the stick on the nut plate align the nut with the bolt to start the threads. Once the bolt is tight, bend the stick off of the nut plate.

**STEP 3**

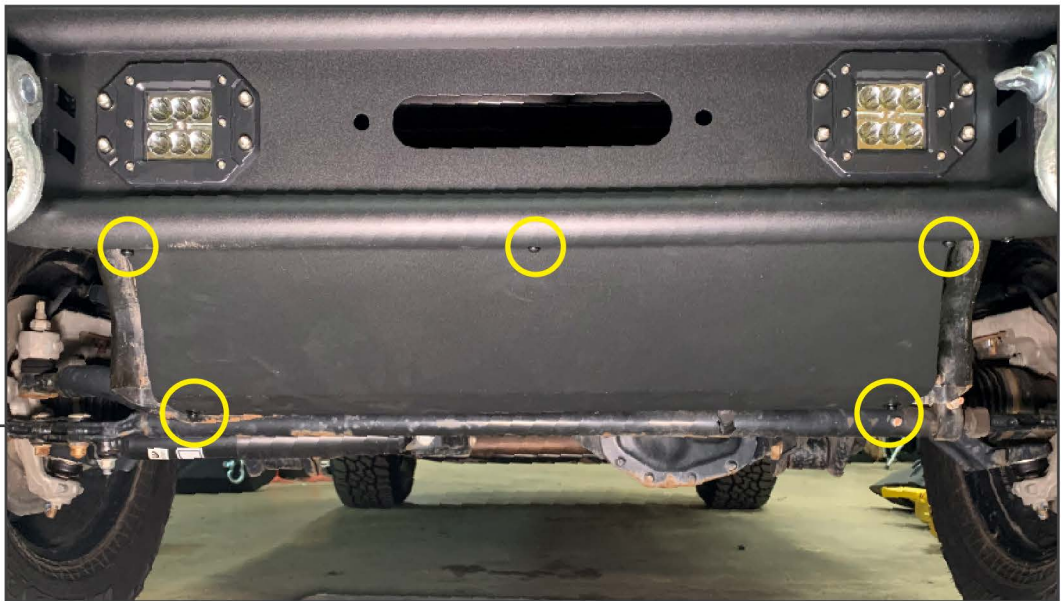
Place (2) M12 x 35mm stud plates and into the inner and outer sections of the bumper. Hold the studs in place using the (4) plastic stud holders. Add (2) bumper spacers to the outer studs. Align the bumper to the vehicle and secure to the bumper using the (4) M12 x 35mm bolts, (4) M12 nuts, (8) M12 lock washers, and (8) M12 flat washers.

**STEP 4**

Install the (2) LED flood lights using (4) M6 Allen bolts and (4) M6 nuts per light.

**STEP 5**

Loosely install the (2) skid plate brackets to the vehicle's lower radiator support using (1) M8 x 35mm stud plate, (1) M8 lock washer, (1) M8 flat washer, and (1) M8 nut per side.

**STEP 6**

Use (5) M6 x 20mm Allen bolts, (5) lock washers, (5) flat washers, and (4) M6 nuts to secure the skid plate to the vehicle. Tighten all bolts until secure.

**STEP 7**

Secure the light bar bracket to the bumper using (2) M8 x 25mm Allen bolts, (2) M8 lock washers, (2) M8 flat washers, and (2) M8 nuts. Secure the light bar to the brackets using (2) M8 x 16mm Allen bolts, (2) M8 lock washers, and (2) M8 flat washers. Using the provided wiring harnesses, connect the lights to the vehicle.

Installation is now complete.