



2.5" LIFT KIT WITH SHOCKS

(2007-2018 WRANGLER JK)

INSTALLATION INSTRUCTIONS

CONTENTS

- (2) Front Coil Springs
- (2) Front Shocks
- (2) Rear Coil Springs
- (2) Rear Shocks
- (2) Front Bump Stops
- (2) Rear Bump Stops
- (2) Rear Sway Bar Links
- (4) Brake Line Extensions
- (1) Rear Track Bar Relocation Bracket
- (1) Bolt Sleeve
- (2) 9/16-18 x 3" Bolts
- (4) 9/16 Flat Washers
- (2) 9/16 Lock Nuts
- (2) 3/8-16 x 2.5" Bolts
- (5) 3/8 Flat Washers
- (5) 3/8 Lock Nuts
- (1) 3/8-16 x 1.25" Bolt
- (2) 3/8-16 x 1.00" Bolts
- (4) 5/16-18 Bolts
- (8) 5/16 Flat Washers
- (4) 5/16 Nuts
- (4) 1/4-20 Bolts
- (8) 1/4 Flat Washers
- (4) 1/4 Lock Nuts

TOOLS REQUIRED

- 10mm, 11mm, 14mm, 16mm, 18mm, 19mm, 21mm, 22mm Sockets
- 13mm, 14mm, 17mm, 18mm, 19mm, 21mm, 22mm Wrenches
- Panel Removal Tool
- Power Drill
- 3/8" Drill Bit
- Vice Grips
- Impact Gun
- Socket Extensions
- Socket Wrench

J143272

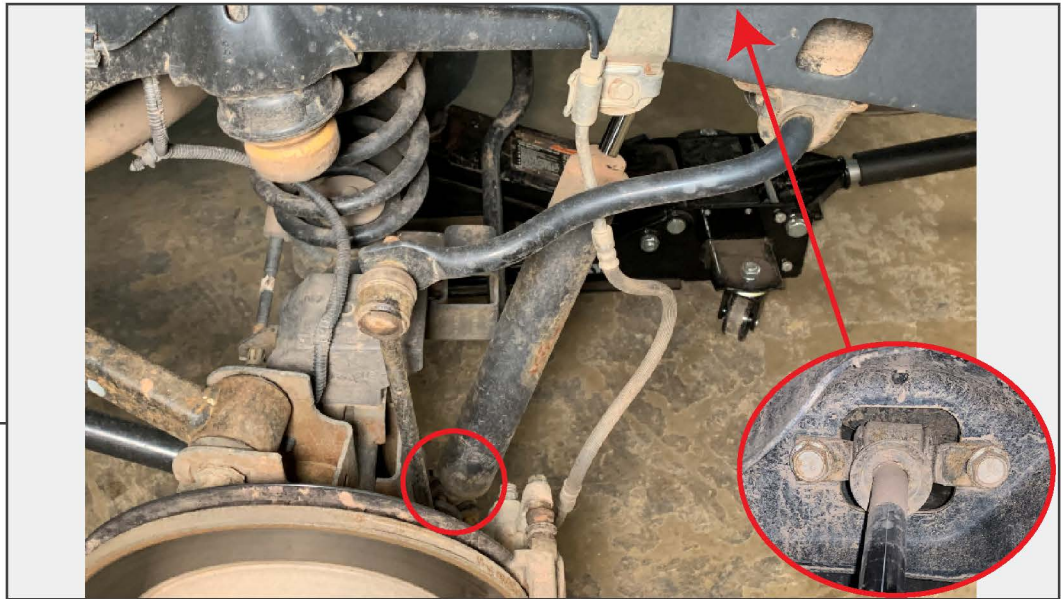
**STEP 1
(REAR)**

Using a jack and jack-stands, support the vehicle off the ground. Place the jack-stands under the frame rails of the vehicle. Remove the rear wheels. Support the rear axle using the floor jack. Remove the 21mm Track Bar bolt going through the axle. Loosen, but do not remove the 21mm Track Bar bolt through the vehicle's frame.

STEP 2

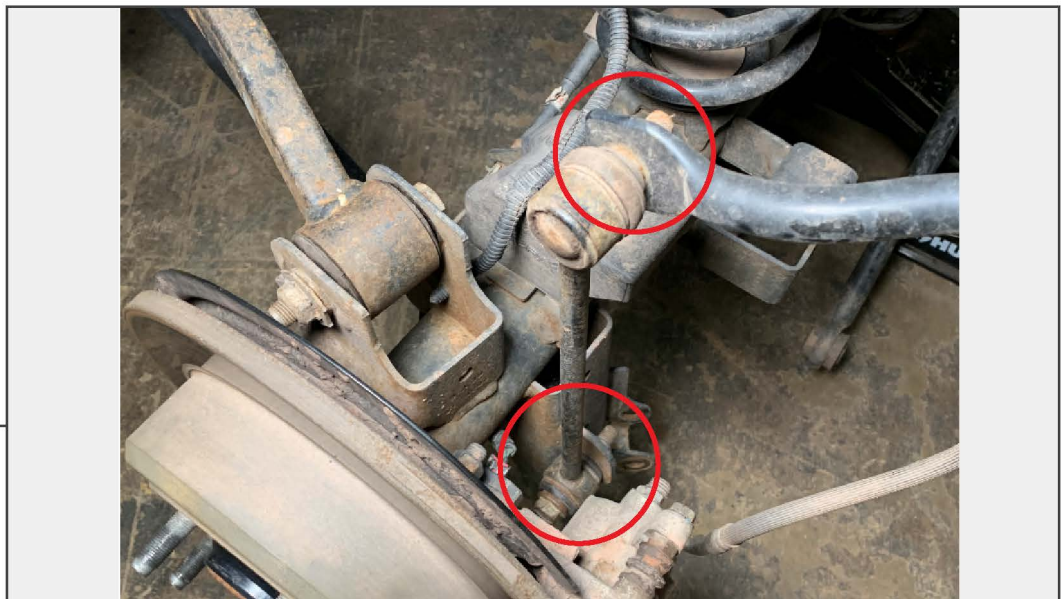
Remove (1) 10mm bolt to remove the brake line from the frame. This will allow additional clearance when lowering the axle. Repeat on both sides of the vehicle.

STEP 3



With the axle supported, remove (1) 18mm Nut and Bolt from the lower shock mount, then remove (2) 16mm Bolts securing the upper mount to the frame. Remove shock from the vehicle. Hardware will be reused. Repeat on both sides of vehicle.

STEP 4



Remove (1) 18mm nut and bolt from the lower sway bar link mount, then (1) 18mm nut from the top of the sway bar link. Remove the sway bar link from the vehicle. Hardware will be reused.

The sway bar links will be reused at the front of the vehicle. Repeat on both sides of vehicle.

STEP 5



Remove the wiring harness from the control arm mount using a panel removal tool.

Repeat on both sides of vehicle.

STEP 6



Remove (2) 10mm nuts to release the emergency brake cables from the body of the vehicle. This will allow additional clearance while lowering the axle.

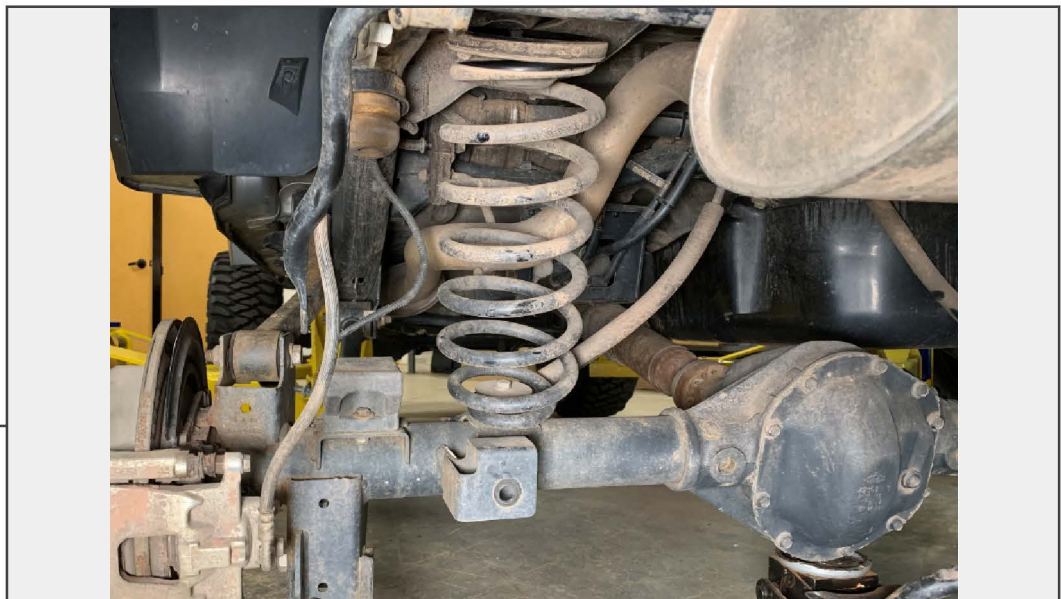
STEP 7



Loosen, but do not remove, the (2) 21mm control arm bolts from the frame.

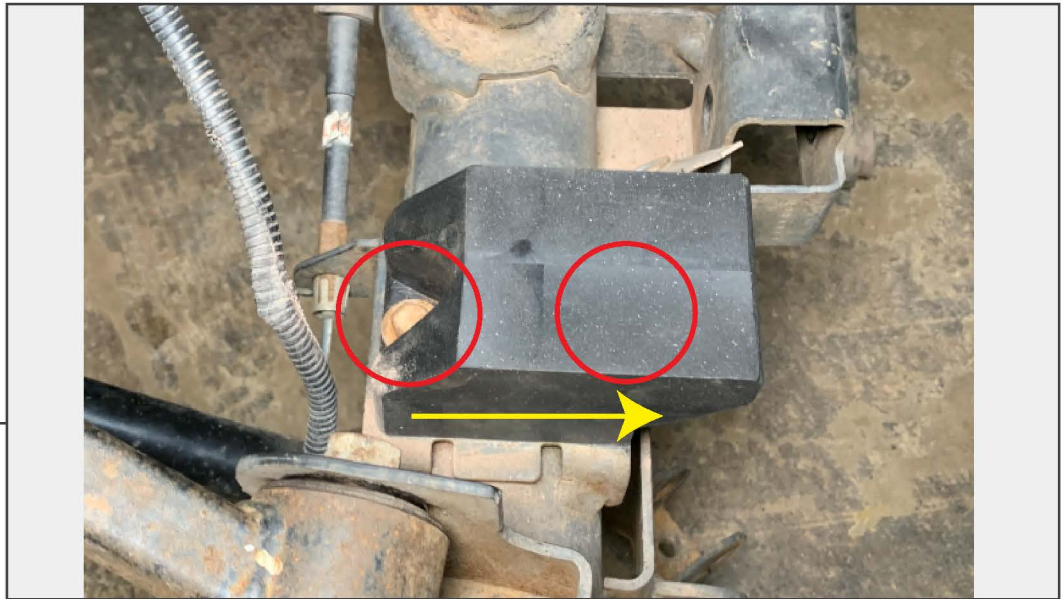
Repeat on both sides of vehicle.

STEP 8



Lower the axle using the floor jack. Lower the axle until the springs are loose, then pull the springs out from the vehicle. The upper spring isolator will be reused.

STEP 9



Install the bump stop to the rear axle using (2) 5/16 bolts, nuts, and washers. Make note of the direction of the bump stop.

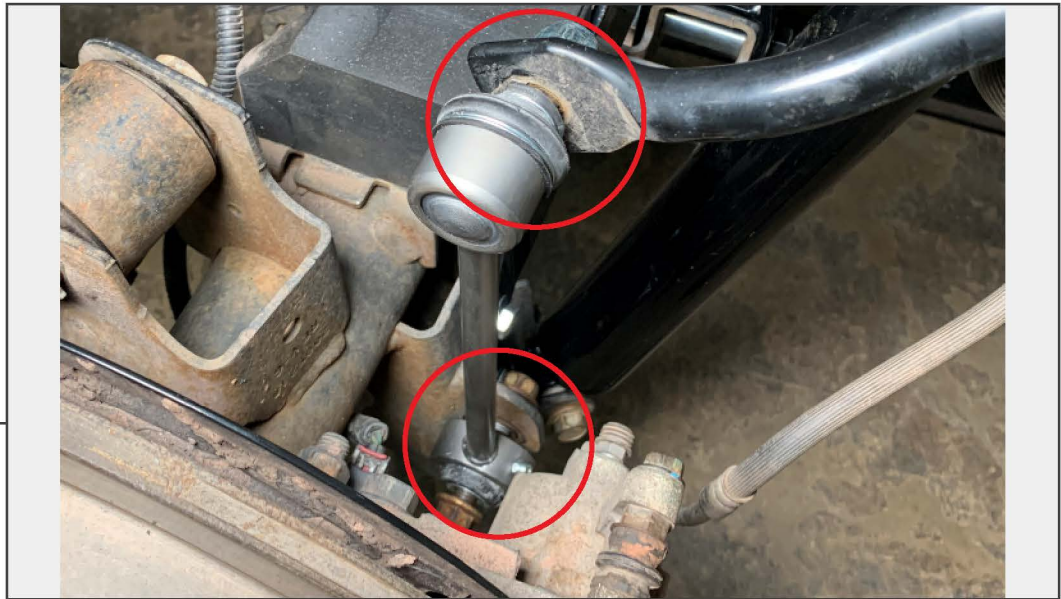
Repeat on both sides of vehicle.

STEP 10



Remove the spring isolator from the old spring, and place it on top of the new spring in the same orientation. Install the rear spring (shorter spring) into the vehicle.

STEP 11



Install the new sway bar links into the vehicle, use the provided lock nut to secure the sway bar link to the sway bar, then use the original hardware for fastening to the axle.

STEP 12



Install the rear shocks into the vehicle. Reuse the original hardware.

STEP 13

Gently massage the brake line to reach the bracket extension. Install the brake line extension to the brake line bracket. Bolt the extension to the frame using original hardware. Be sure the brake line is not touching anything.

Repeat on both sides of vehicle.

STEP 14

Loosely install the track bar relocation bracket to the axle. Install (2) 3/8-16 bolts, locking nuts, and washers through the control arm mount bracket. Install (1) 9/16-18 bolt, nut, washers, and spacer sleeve through the original track bar mounting location. Secure the relocation bracket to the vehicle by tightening all bolts. Install the track bar to the bracket using (1) 9/16-18 bolt, flat washers, and locking nut. Torque track bar mounting bolts with the suspension loaded.

STEP 15



Reinstall the wheels onto the vehicle. While the suspension is loaded, tighten the control arm bolts attached to the frame to 125 ft. lbs.

Rear installation is now complete.

**STEP 16
(FRONT)**



Using a jack and jack-stands, support the vehicle off the ground. Place the jack-stands under the frame rails of the vehicle. Remove the front wheels. Support the front axle with the floor jack. Remove the 21mm track bar bolt going through the axle.

STEP 17



Remove the sway bar links from the vehicle. Remove the top 19mm nut, then the 18mm bolt from the bottom of the sway bar links.

Repeat on both sides of vehicle.

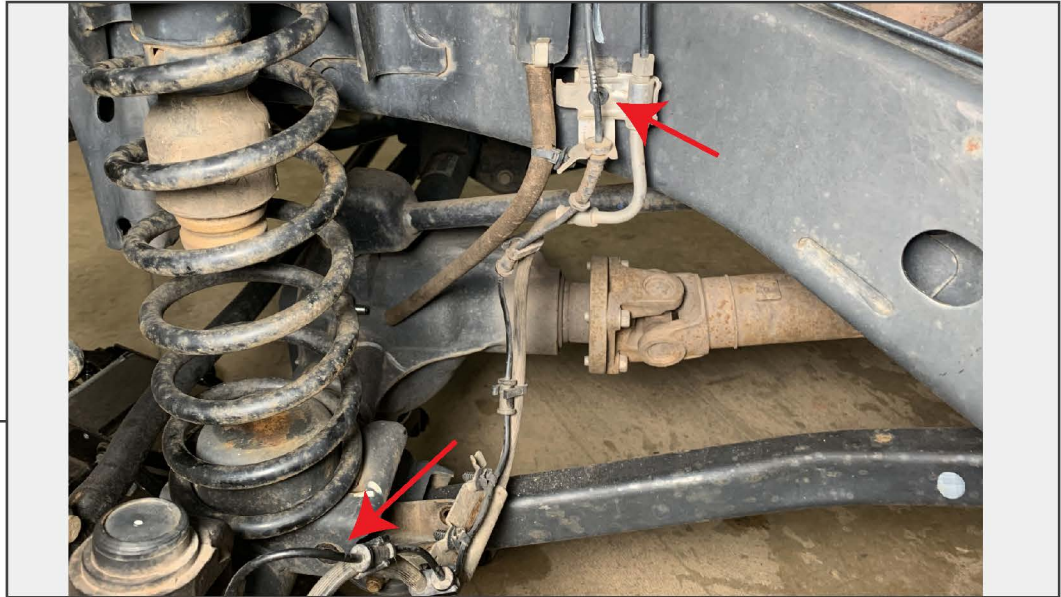
STEP 18



With the axle supported, remove the shock absorber from the vehicle. Remove the (1) 17mm nut at the top of the shock, then the 18mm bottom bolt.

Repeat on both sides of vehicle.

STEP 19



Remove the (2) 10mm bolts to release the brake line brackets from the vehicle. This will allow additional slack when lowering the axle.

Repeat on both sides of vehicle.

STEP 20



Lower the axle down with the floor jack enough to relieve tension from the spring. Remove the spring from the vehicle. Reuse the upper spring isolator on the new spring.

Repeat on both sides of vehicle.

STEP 21



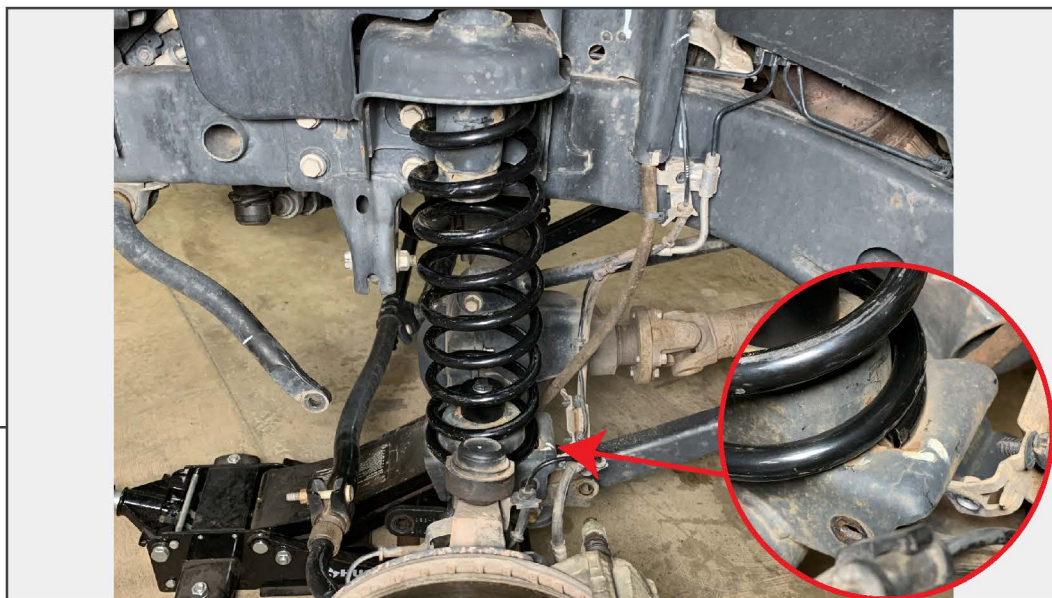
Using a permanent marker and the provided bump stop, make a mark onto the center of the spring perch for drilling. Drill this hole using a 3/8" drill bit.

STEP 22



Using (1) 3/8-16 bolt, flat washer, and locking nut, install the bump stop into the vehicle. Tighten until secure.

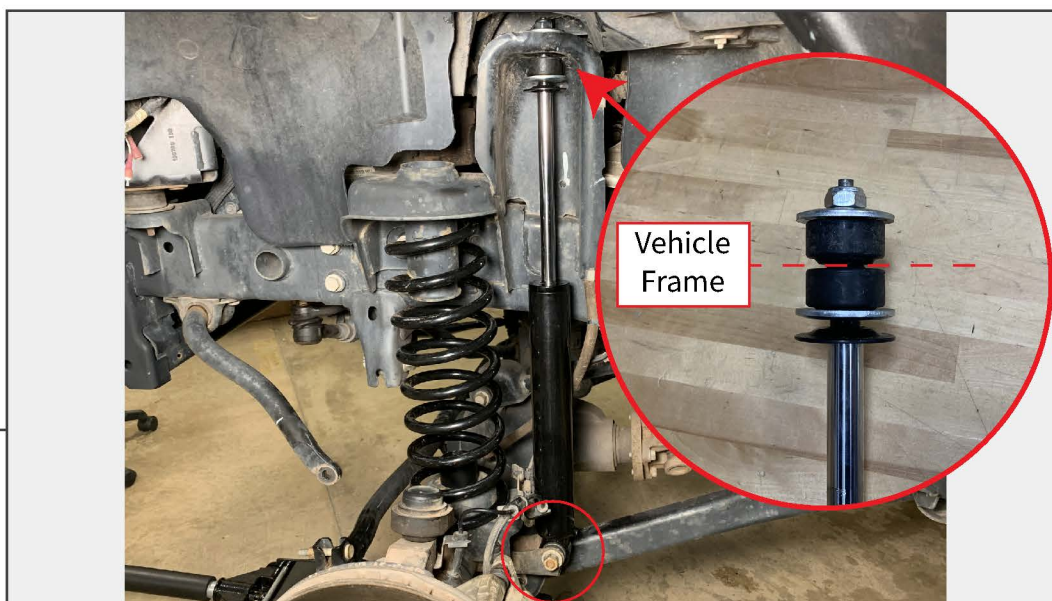
STEP 23



Install the new front spring (taller spring) onto the vehicle. Be sure to align the bottom of the spring with the cutout in the axle.

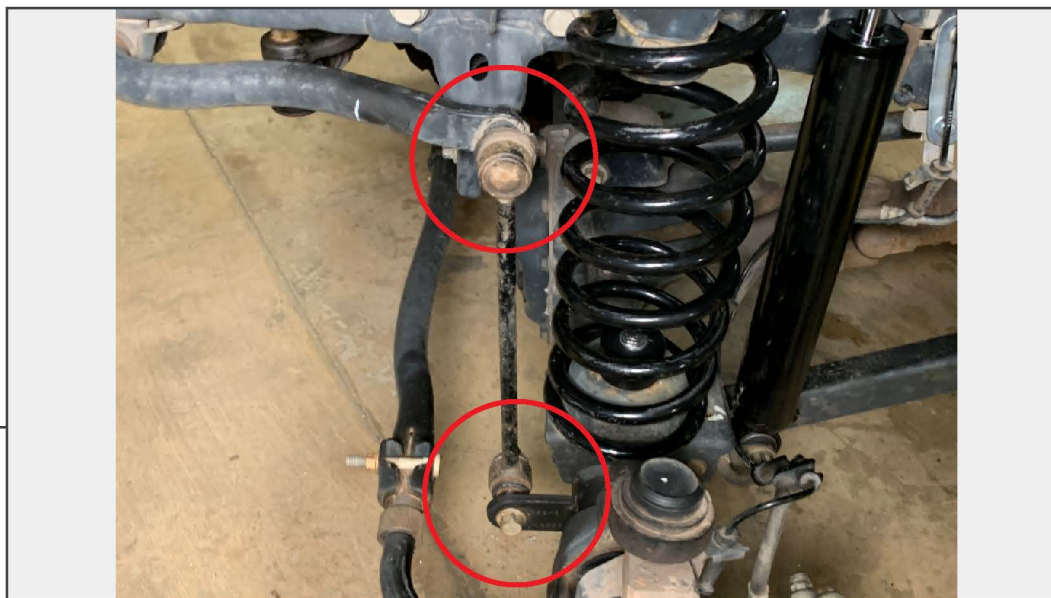
Repeat on both sides of vehicle.

STEP 24



Install the provided shock absorber into the vehicle. Reuse original hardware for the lower mount. Use provided 19mm lock nut to fasten the top of the shock into the frame.

Note: Be sure to install the shock bushings on both sides of the frame for the top mount.

STEP 25

Install the sway bar links previously on the rear to the front sway bar using original hardware.

STEP 26

Release the ABS wiring from the clip in the frame by pushing in the two tabs. Then, carefully massage the brake line to bring the line down. Install the brake line extension to the brake hose bracket using (1) 1/4-20 bolt, (2) flat washers, and (1) locking nut. Install the extension to the frame in the original location using original hardware.

Repeat on both sides of vehicle.



STEP 27

Installation is now complete.

NOTICE

TORQUE SPECIFICATIONS

- Sway Bar Link Upper Nut: 66 ft/lbs.
- Sway Bar Link Lower Bolt: 75 ft/lbs.
- Control Arm Bolts :125 ft/lbs
- Wheel Lug Nuts: 95 ft/lbs.

Prior to Driving

- Professional Steering Alignment.
- Headlight Adjustment.
- Ensure brake line slack when sway bars are disconnected.
- Ensure OE front driveshaft clearance with sway bars disconnected.

Maintenance

- First 200 miles, re-torque all fasteners.
- Every 3000 miles, re-torque all fasteners & visually inspect suspension bushings for premature wear.

Special Consideration:

With any change to the factory suspension geometry there will be increased wear and tear, things such as suspension bushings etc. Ensure vehicle safety by frequently inspecting wear and tear components.