



MESH BIKINI TOP

(1997-2006 WRANGLER TJ)

INSTALLATION INSTRUCTIONS

CONTENTS

(1) Bikini Top
(12) Straps

TOOLS REQUIRED

N/A

SKU # J140386

STEP 1



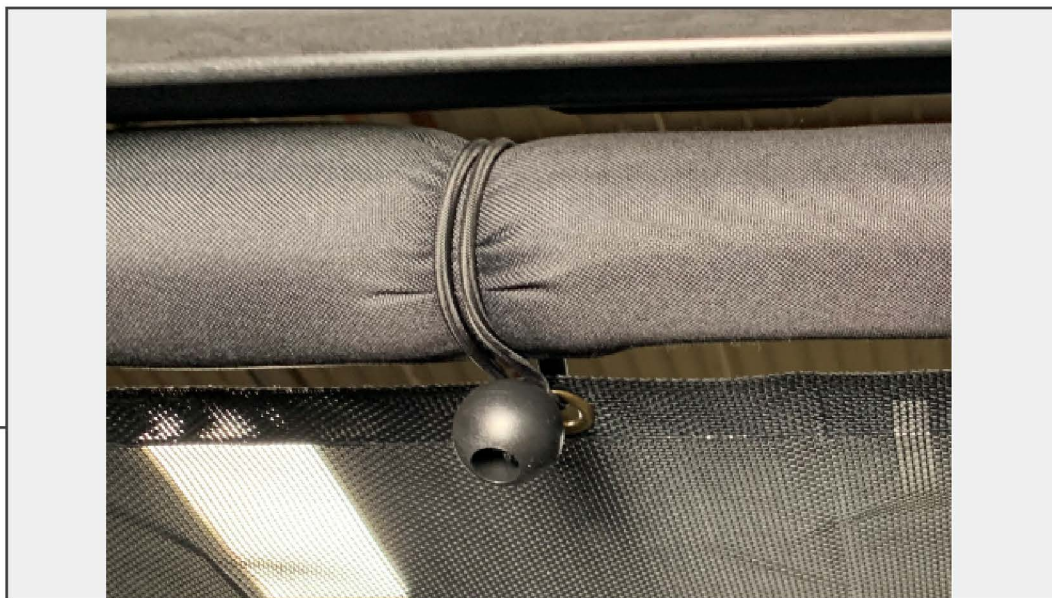
Lay the bikini top out to determine the front. The side with the Velcro strap goes towards the front windshield on the vehicle.

STEP 2



Drape the bikini top over the roll bar of the vehicle. Attach the Velcro strap to the hook along the windshield bar.

STEP 3



Starting from the front and moving towards the rear, use the (12) provided straps to secure the top to the vehicle. Push the strap through the top, then push the strap around the roll bar. Wrap the strap around the attached ball to hold the strap tight.

STEP 4



Installation is now complete.