



# HEADLIGHT MOUNTING BRACKETS

(2007-2018 WRANGLER JK)

---

## INSTALLATION INSTRUCTIONS

### CONTENTS

---

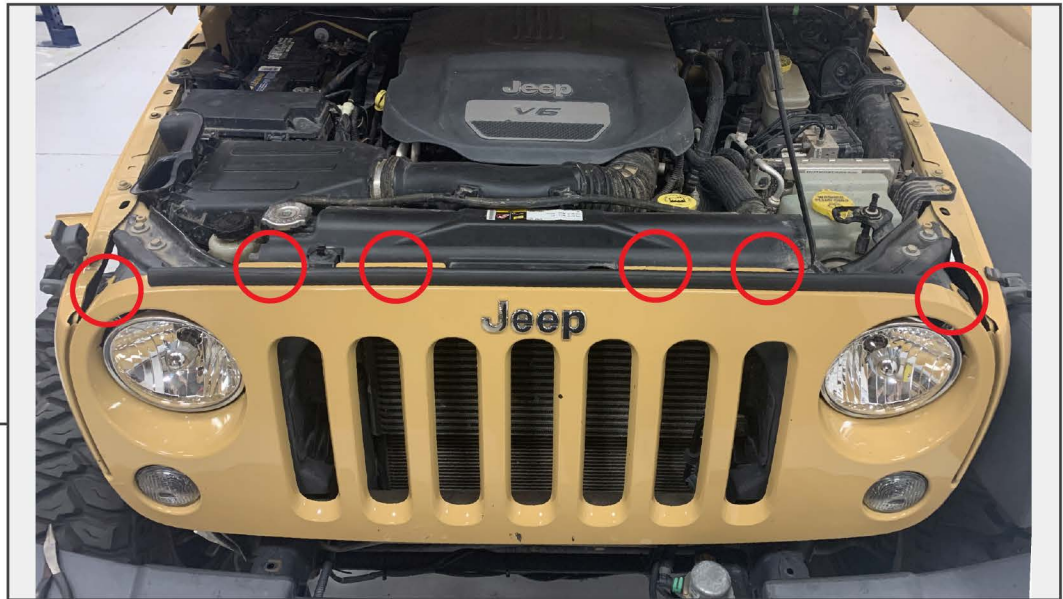
- (1) LH Mounting Bracket
- (1) RH Mounting Bracket
- (3) Mounting Pins

### TOOLS REQUIRED

---

- Panel Removal Tool
- T15 Torx Screwdriver

SKU # J139380



**STEP 1**

Remove (6) Push Clips from the top of the grille. Then pull firmly along the bottom of the grille to disengage the lower clips.



**STEP 2**

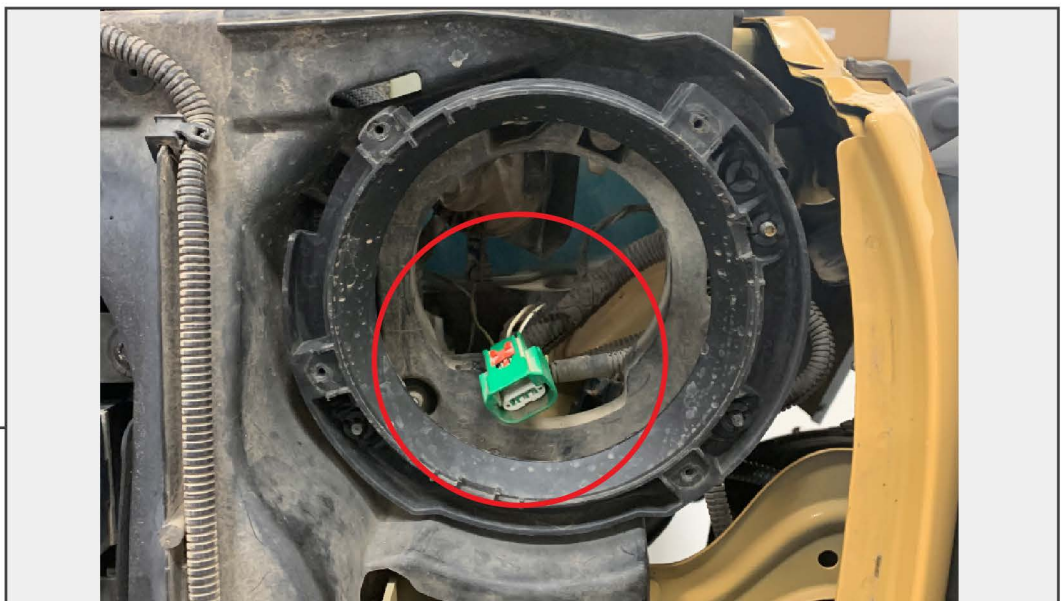
Unplug the turn signals by sliding back the red lock, then pushing down the black tap while sliding the plug away from the light housing. Remove the grille from the vehicle.

**STEP 3**

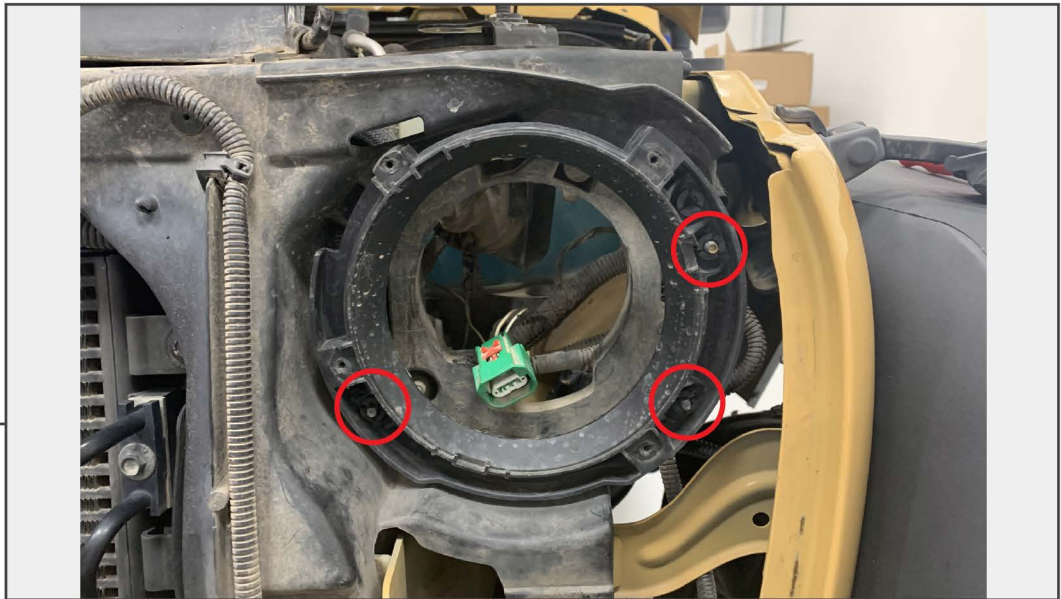


Remove the headlight from the mounting bracket by removing (4) T-15 Torx Screws surrounding the headlight lens.

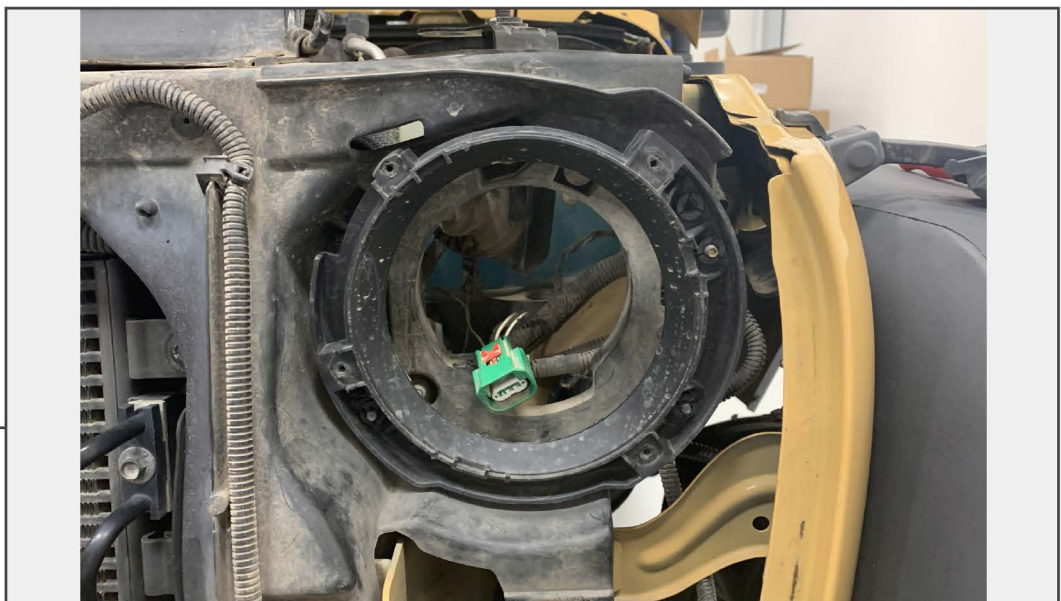
**STEP 4**



Pull the headlight away from the vehicle to unplug the harness. Slide the red lock back, then push down the green clip to remove the harness from the light assembly.

**STEP 5**

Remove the (3) T-15 Torx adjustment screws to remove the bracket. Remove the adjustment screws from the old bracket and install them into the vehicle directly.

**STEP 6**

Install new retaining bracket by firmly pushing the housing into place. Be sure the new bracket is installed in the same orientation as the previous bracket. Adjust headlight accordingly when fully reassembled.

Installation is now complete.