



---

# UNDER SEAT LOCK BOX

(07-10 Wrangler JK 2-Door , 07-18 Wrangler JK 4-Door Passenger Side)

---

## INSTALLATION INSTRUCTIONS

### CONTENTS

---

- (1) Lock Box
- (1) Mounting Bracket
- (2) Keys
- (1) Drawer Handle
- (1) Handle Nut
- (1) Bracket Spacer
- (3) Allen Bolts

### TOOLS REQUIRED

---

- 10mm Wrench
- 4mm Allen Key
- 18mm Socket
- T30 Torx Socket
- Ratchet Wrench
- Zip-Ties
- Torque Wrench

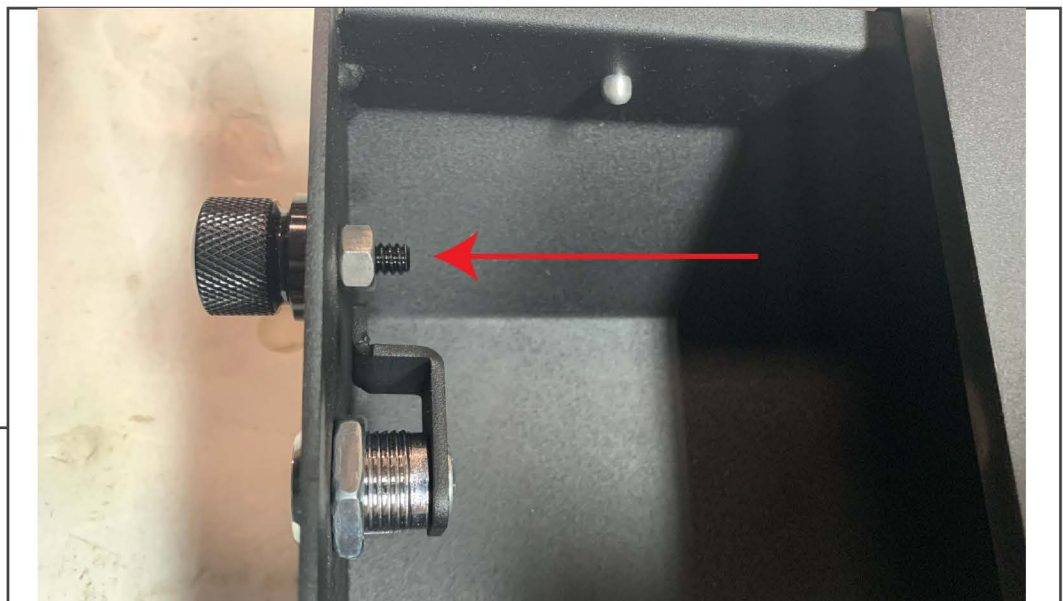
SKU # J139281

**STEP 1**



Install the mounting bracket to the lock box using (3) allen bolts.

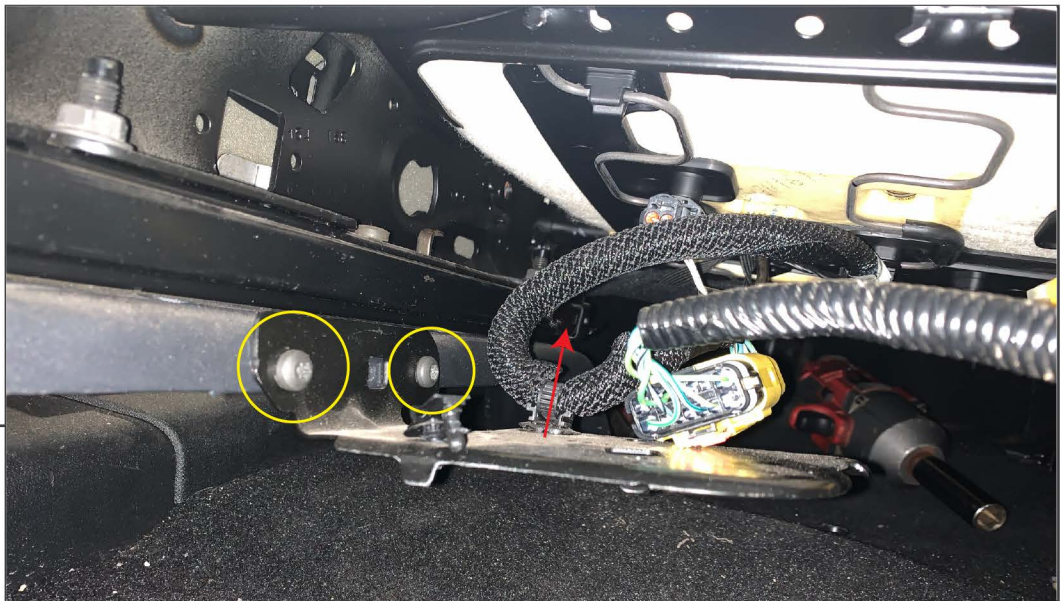
**STEP 2**



Install the drawer handle by putting the handle through the front of the drawer, and use (1) 10mm nut to tighten the handle to the drawer.

**STEP 3**

Remove the front two seat bolts using a 18mm socket and socket wrench. Loosen but do not remove the rear two seat bolts. Slide the seat accordingly to access each bolt.

**STEP 4**

Under the seat, separate the shown seat connector from the mounting bracket by pulling up on the wire hold-down. Remove two T30 Torx bolts to remove the mounting bracket. Zip-Tie the connector and wiring to the frame of the seat.

**STEP 5**

Slide the lock box under the seat. Be sure to not snag any wires under the seat with the lock box. Place the (1) bracket spacer on the seat mount closest to the door. Align the mounting bracket on top of the seat mounts.

**STEP 6**

Reinstall (2) front 18mm seat bolts, tighten to 55 ft. lbs. Tighten rear 18mm seat bolts to 55 ft/ lbs. Once tight, ensure seat and lock box functionality. Installation is now complete.