



PREDATOR GRILLE WITH AMBER LEDS

(2018-2020 JEEP WRANGLER JL, 2020 JEEP GLADIATOR)

INSTALLATION INSTRUCTIONS

CONTENTS

- (1) Predator Grille w/ LEDs
- (8) M4x0.7 Phillips Screws
- (8) M4 Washers
- (8) M4 Nuts
- (6) Metal Clips
- (1) Wire Harness

TOOLS REQUIRED

- Panel Removal Tool
- Phillips Screwdriver
- 9/32 Socket
- 8mm Socket
- Socket Wrench



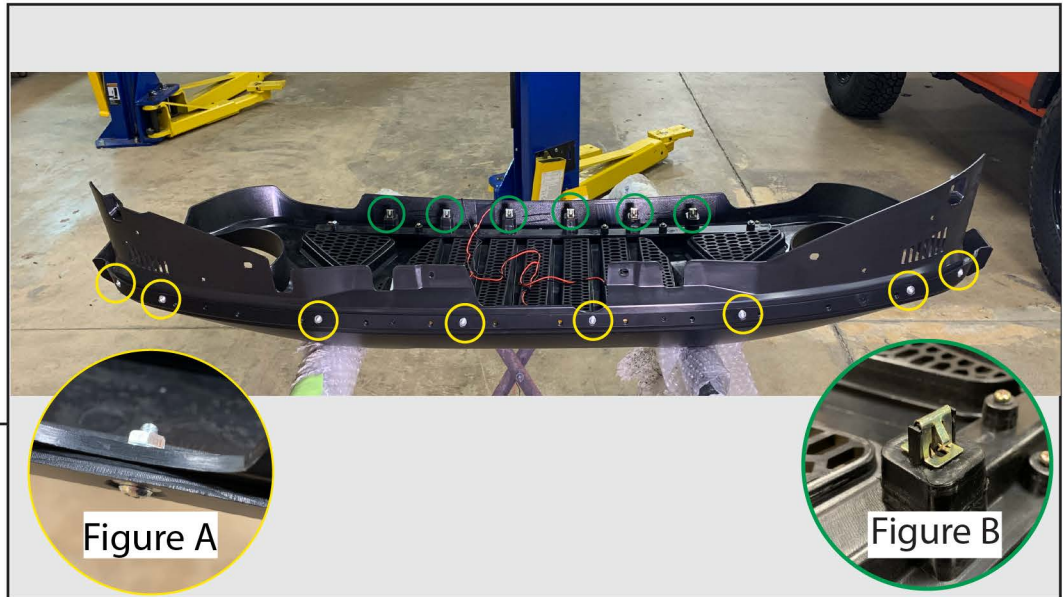
STEP 1

Remove the (6) push clips from the top of the grille using the panel removal tool.



STEP 2

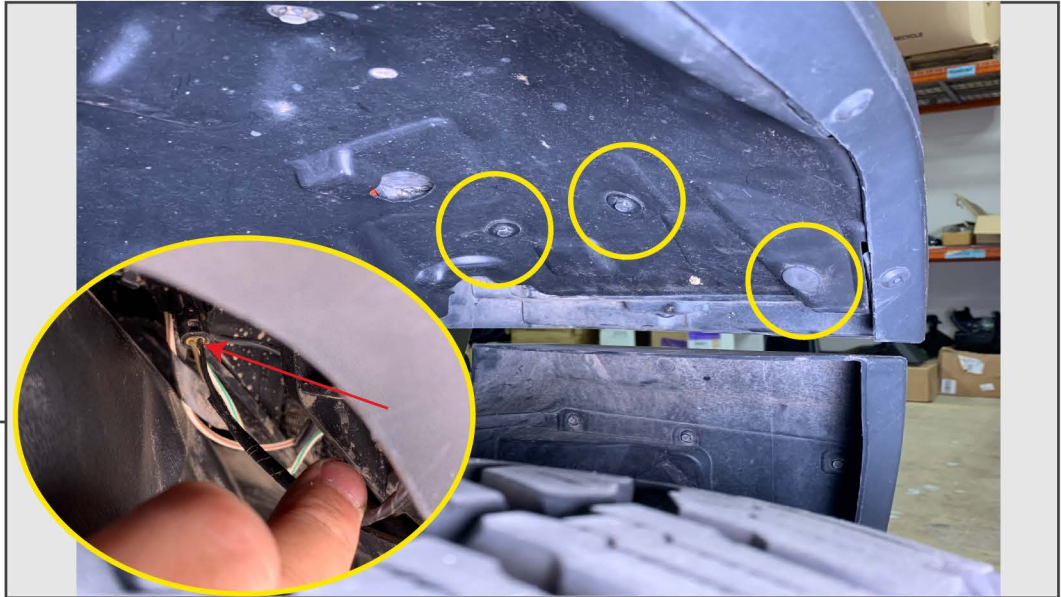
Remove the weather seal and the foam pads from the upper grille using the panel removal tool, these will be reused on the new grille.

**STEP 3**

Secure the upper portion of the Predator grille to the lower portion using the supplied (8) M4 bolts, (8) nuts, and (8) washers in the designated locations (Figure A). Have the head of the bolt facing out. Install the (6) metal clips by pushing them onto the lower section of the grille (Figure B). Install the supplied grille wiring harness and route the wiring towards the passenger side fender.

**STEP 4**

Align the grille to the vehicle. Route the LED wiring away from the mounting points for the clips. Firmly press the lower clips on to the vehicle. Then reinstall the (6) factory plastic push clips across the top of the grille.

**STEP 5.
(WIRING)**

Remove the (2) 8mm bolts and (1) push clip, fold back the fender liner to gain access to the fender marker light wiring. Splice the wiring harness into the factory marker light wiring as follows:

Factory Marker Light	-	LED Grille Light Harness
White 12V Positive (+)	-	Red
Black Negative (-)	-	Black

**STEP 6**

Turn on the vehicles lights to confirm grille light functionality. The grille lights will only be on if the marker lights are on. Then, reinstall fender liner bolts and clips. Installation is complete.