



REAR BUMPER WITH TIRE CARRIER

(2018-2023+ WRANGLER JL)

INSTALLATION INSTRUCTIONS

CONTENTS

- (1) Rear Bumper
- (1) Tire Carrier
- (1) Tire Carrier Stud Mount
- (1) Tire Carrier Handle
- (2) Spare Tire Mounts
- (2) Third Brake Light Mounts
- (2) Rear Bumper Mounts
- (1) Handle Latch
- (1) Hitch Receiver Mount
- (1) Tire Carrier Stopper Mounts
- (1) NSK Bearing L44649/10 - 402
- (1) NSK Bearing L68149/10 - 506
- (1) Seal
- (1) Castle Nut
- (1) Cotter Pin
- (1) Dust Cap
- (1) Dust Cap Retaining Phillips Screw
- (3) Lug Nuts
- (2) Bearing Washers
- (1) Rear Camera Extension Harness
- (1) Third Brake Light Extension Harness
- (2) LED License Plate Lights
- (4) Proximity Sensor Mount Kits
- Optional:**
- ** (2) KC LED Flood Lights
- ** (1) Light Harness

- Rear Bumper Hardware:**
- (4) M12 x 1.75 x 120mm Bolts
 - (2) M12 x 1.75 x 40mm Bolts
 - (12) M12 Flat Washers
 - (6) M12 Lock Washers
 - (6) M12 Nuts
 - (8) 9/16 - 18 x 1 1/2 Bolts
 - (16) 9/16 Flat Washers
 - (16) 9/16 Lock Washers

- Tire Carrier Hardware:**
- (4) M12 x 1.75 x 80mm Bolts
 - (4) M12 x 1.75 x 60mm Bolts
 - (1) M12 x 1.75 x 30mm Bolt
 - (12) M12 Flat Washers
 - (4) M12 Lock Washers
 - (4) M12 Lock Nuts
 - (2) M10 x 1.50 x 65mm Bolts
 - (3) M10 x 1.50 x 40mm Bolts
 - (6) M10 x 1.50 x 30mm Bolts
 - (16) M10 Flat Washers
 - (5) M10 Lock Washers
 - (5) M10 Lock Nuts
 - (4) M6 Screws
 - (4) M6 Flat Washers
 - (2) M6 Lock Nuts
 - (3) Lug Nuts
 - (1) Allen Key

TOOLS REQUIRED

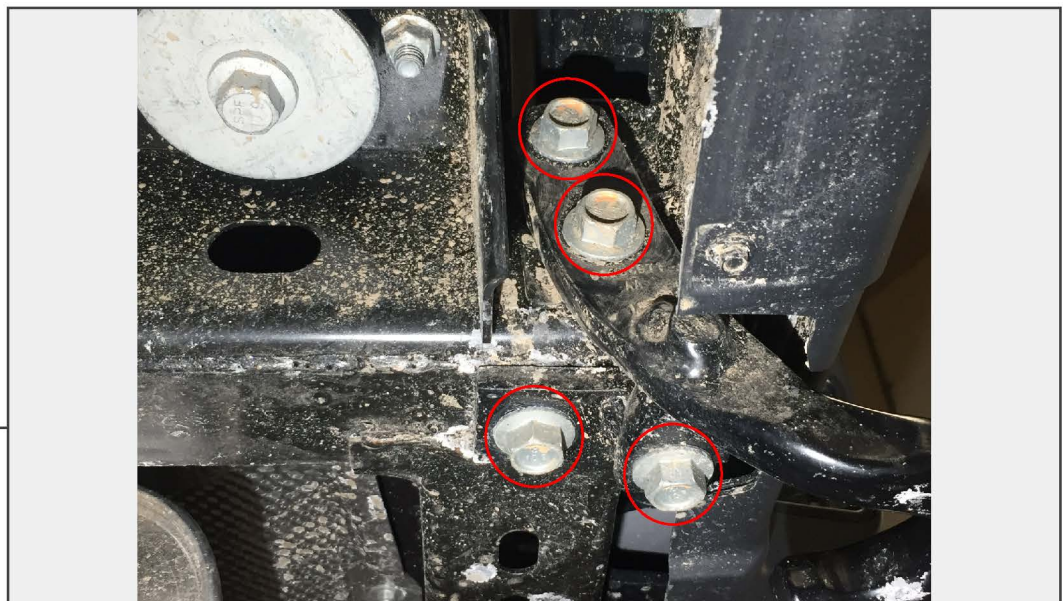
- Basic Hand Tools
- 35mm Socket
- Tape Measure
- Grease Gun
- Straight Edge

SKU # J130570-JL / J138941-JL



STEP 1

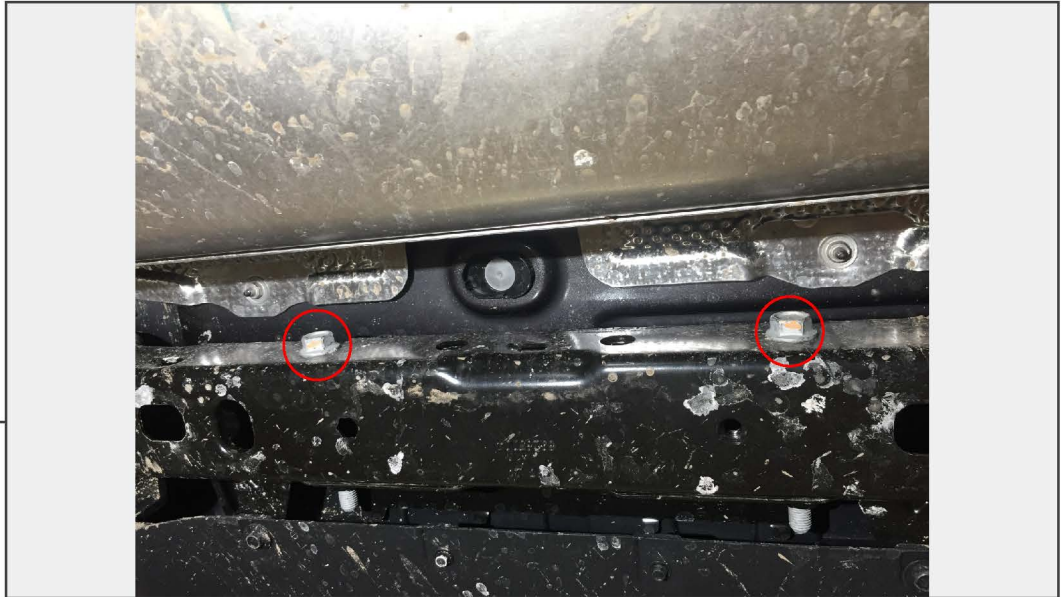
Locate the T-40 Torx lock screw on the camera cover, and turn it counter clockwise to unlock. Remove the camera cover by pulling away from the vehicle. Then, remove the spare tire.



STEP 2

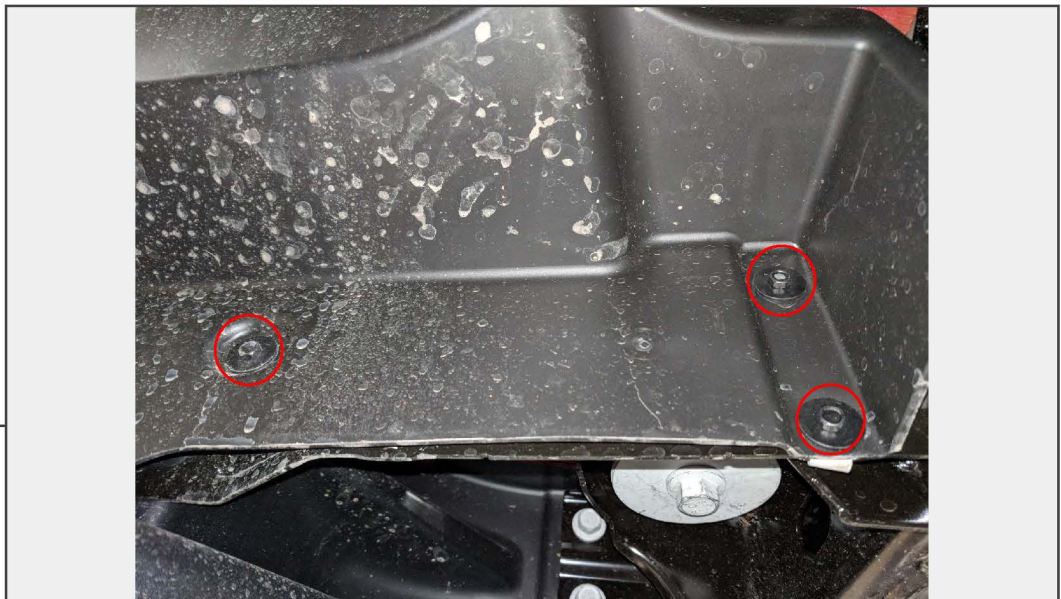
Locate and remove the (4) 21mm bolts securing the tow hook. Remove tow hook.

STEP 3



From directly center under the vehicle, locate and remove the (2) 16mm bolts supporting the center of the bumper.

STEP 4



Locate and remove the (3) 8mm screws securing the splash shield to the bumper. Remove splash shield.

STEP 5

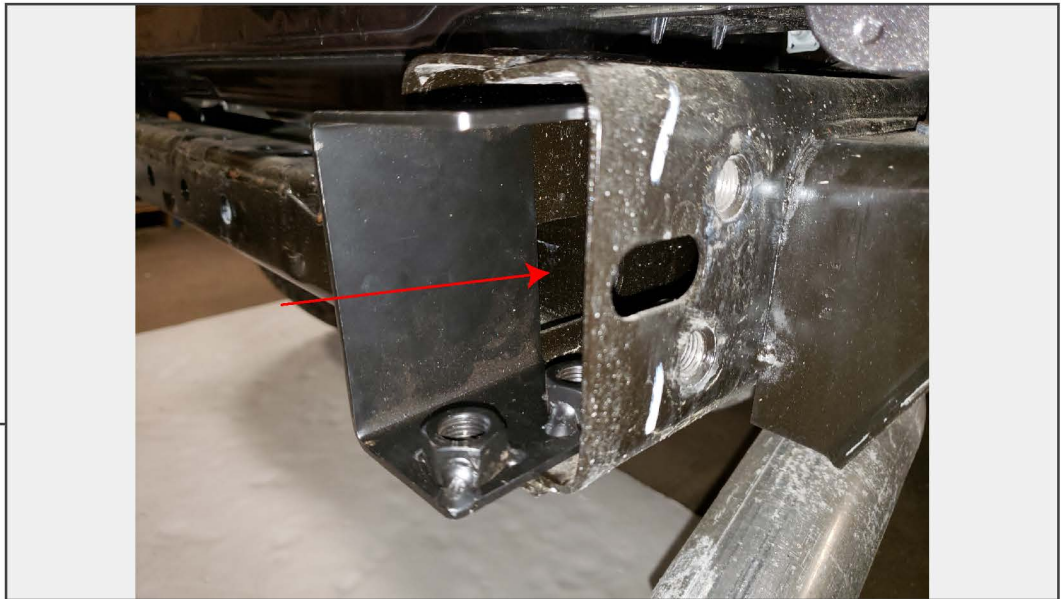


Once the splash shields are removed, locate and remove the (2) 16mm bolts securing the splash shield brackets to the bumper. Bumper will now be loose.

STEP 6



On the driver side, locate and unplug the wiring connector. Tilt up and remove the bumper from the vehicle.



STEP 7

Insert the supplied dual nut plate into the passenger side frame rail.



STEP 8

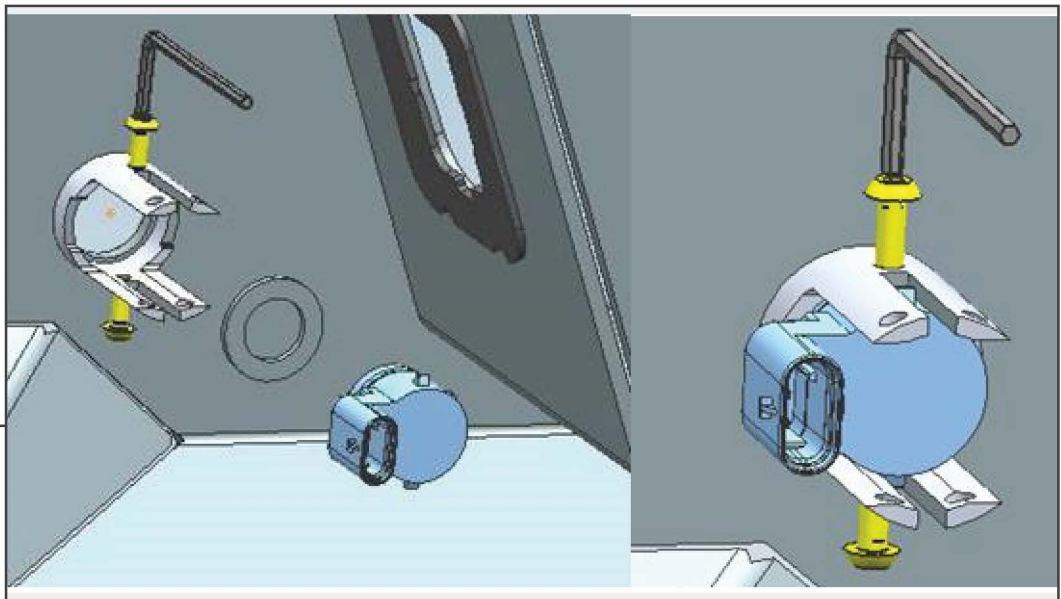
Install the tire carrier shaft through the bumper slot and tighten using the (4) M12 x 1.75 x 80mm bolts. Torque to 64 ft-lbs.

STEP 9



Optional: If equipped with proximity sensors, remove the sensors from the bumper. Then remove the rubber gasket from the sensor. Prepare the sensor for re-installation by applying the supplied foam ring to the sensor. Then reference steps 10-12 for the mounting options.

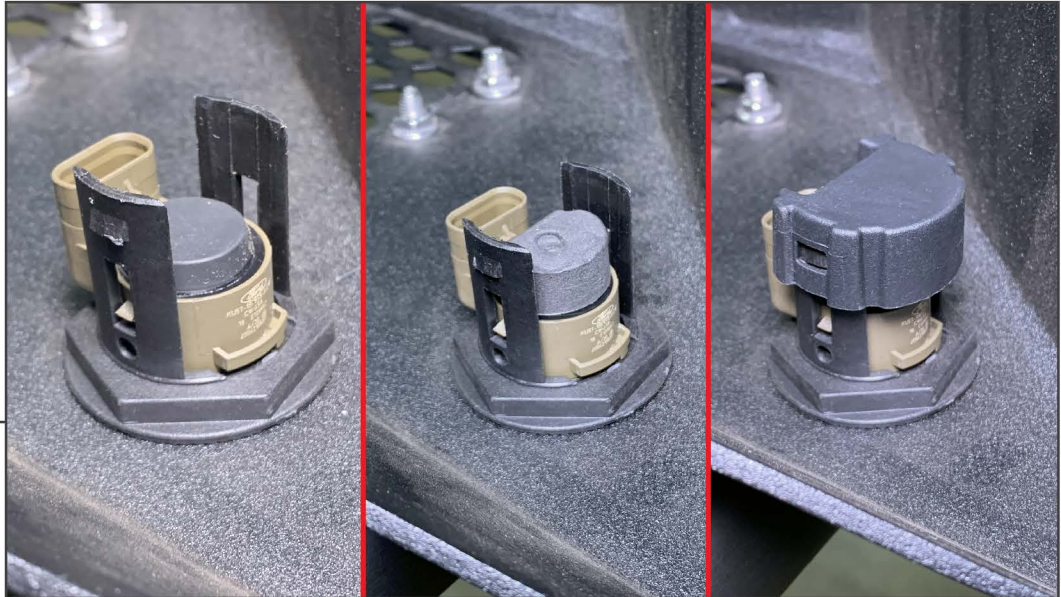
STEP 10



Optional Sensor Mounting: Using the provided M4 Allen screws lightly tighten the screws into the sensor to hold it in place.

****Note:** Over tightening the screws can damage the sensor.

STEP 11



Optional Sensor Mounting: Place the round foam on the back of the sensor. Press the sensor into the bumper. Then clip the retaining plate onto the bumper to hold the sensor in place.

STEP 12



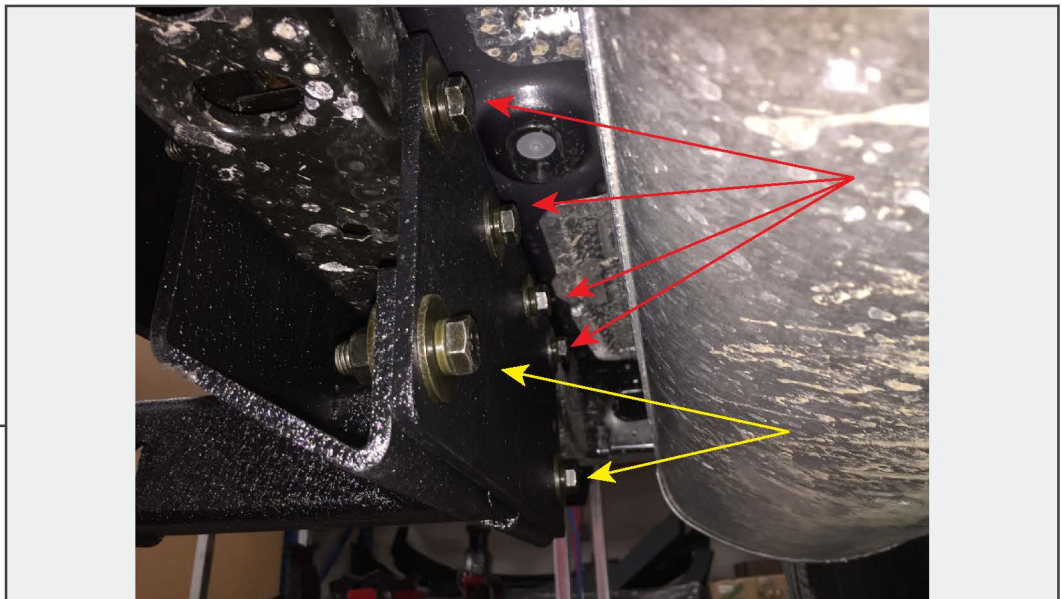
No Sensor: Press the plastic cap into the backup sensor housing through the face of the bumper.

STEP 13



Install the bumper to the vehicle using the (4) 9/16 bolts, flat washers, and lock washers on each side. Torque to 40 ft-lbs.

STEP 14



Install the hitch assembly and hitch plate using the (4) M12 x 120mm bolts, and (2) M12 x 40mm bolts, flat washers, and lock washers. Torque to 40 ft-lbs.

STEP 15



Using a trim panel removal tool, carefully pry the plastic tailgate cover from the tailgate. Remove the cover.

STEP 16



Locate and unplug the (3) wire connections.

STEP 17



Carefully remove the wiring and grommet from the vehicle. Locate, and remove the (8) 13mm bolts holding the tire carrier secure. Remove tire carrier.

STEP 18



Install the cover plate over the tire carrier shaft by removing the 3M tape backing.

STEP 19



Install the larger bearing and race into the bottom of the tire carrier, and the smaller bearing and race on the top of the tire carrier. Make sure to pack the bearing with grease before installation. Then use the small washer for the top and the larger washer for the bottom. Install the seal on the bottom of the tire carrier. Also use a small amount of grease for the seal.

STEP 20



Install the handle latch to the carrier arm by using (2) M10 x 65mm bolts, (4) flat washers, and (2) M10 lock nuts.

STEP 21



Install the latch bracket to the rear bumper by using the (3) M10 x 40mm bolts, (6) flat washers, and (3) lock nuts.

STEP 22



Install the (1) Tire Carrier Base to the tire carrier by using the (2) M12 x 1.75 x 80mm bolts, (4) flat washers, and (2) lock nuts.

**Note: Height will be determined by spare tire size.

STEP 23



Install the (1) Tire Carrier Mounting Hub to the tire carrier base by using (2) M12 x 1.75 x 80mm bolts, (4) flat washers, and (2) lock nuts. Then install the (1) M12 x 1.75 x 30mm bolt to lock the hub in place.

STEP 24



Install the lower part of the third brake light bracket to the tire carrier using the (2) M10 x 1.50 x 30mm bolts, flat washers, and lock washers.

STEP 25



Install the upper bracket to the lower bracket using the (2) M6 x 1.00 x 25mm bolts, flat washers, and lock nuts.

STEP 26



Remove the screws holding the 3rd brake light to the factory tire carrier. Transfer the 3rd brake light to the new bracket. Carefully tighten the factory Torx screws. The screw bosses are plastic and can strip out easily.

STEP 27



Install the carrier bump stops using the (4) M10 x 1.50 x 30mm bolts. With the carrier latched to the bumper, tighten the brackets so that the brackets are making contact with the rubber bumpers on the tailgate.

STEP 28



Install the license plate bracket to the tire carrier using the (2) M6 x 1.00 x 20mm bolts, flat washers, and lock washers.

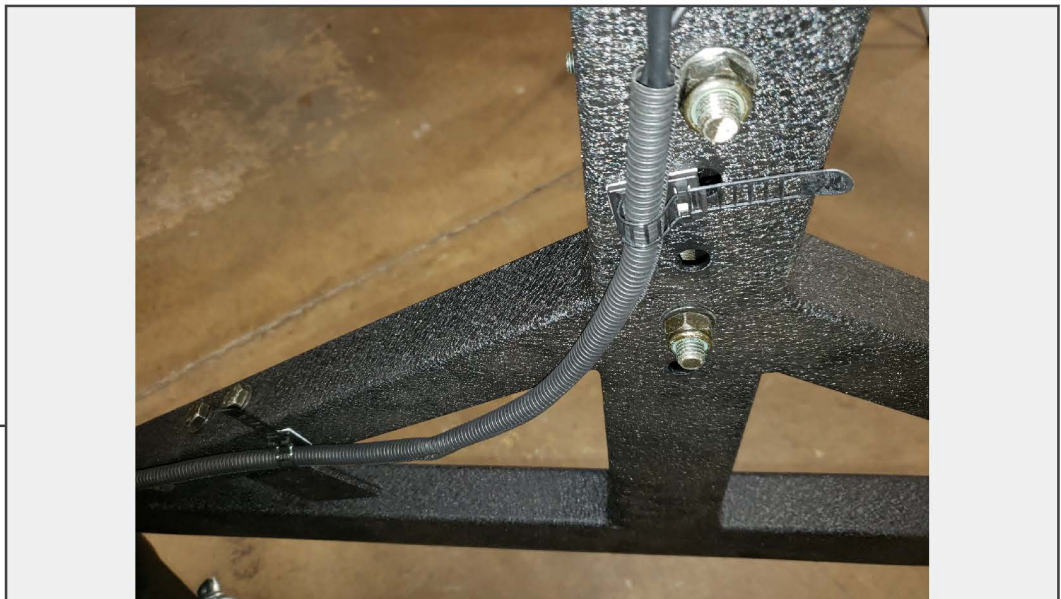


STEP 29



Remove the factory rear backup camera from the factory tire carrier using a T-9 Torx bit. Install the camera to the new bracket using the (3) M2 screws, washers, and nuts.

STEP 30



Install the supplied rear camera extension harness to the rear camera. Then carefully route the factory harness as desired and plug into the factory connections.

STEP 31



Insert the (2) license plate light LEDs through the license plate bracket and attach with the supplied nuts and washers. Next, splice the Red 12v+ wire from the license plate led harness into the White power wire of the factory bumper harness, and the Black 12v- wire from the license plate led harness to the Black wire on the factory bumper harness connector. Test to ensure proper function.

STEP 32

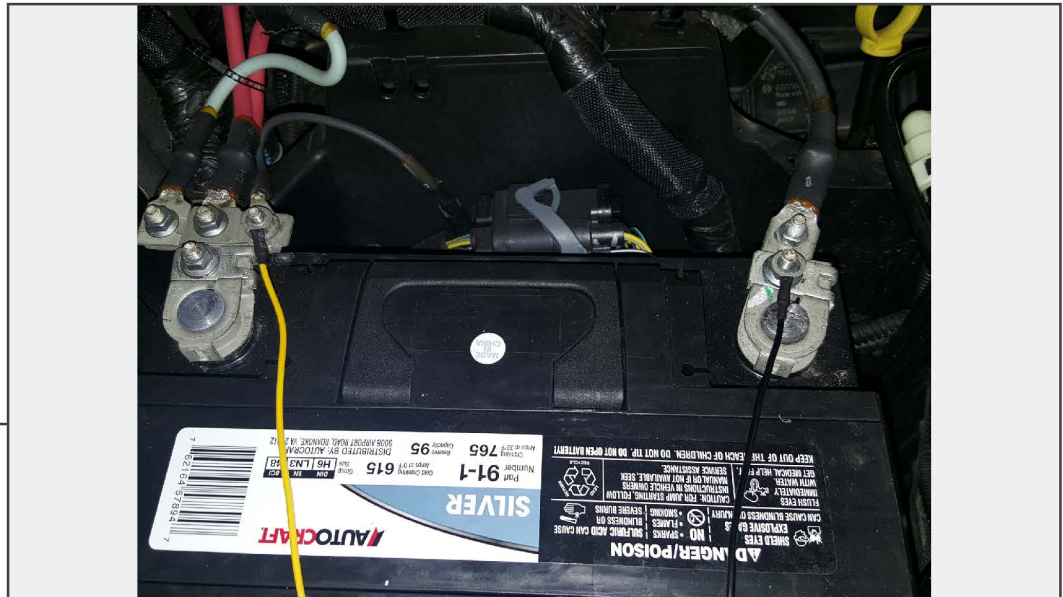


Optional Flood Light Wiring:

Connect the (2) LED Flood Lights (outer lights) into the supplied harness. Zip tie any excess wire away from moving and/or hot engine components.



STEP 33



Optional Floodlight Wiring:

Install the yellow 12+ volt wire to the positive battery terminal. Connect the black ground wire to the negative battery terminal. Secure any extra wire out of the way.

STEP 34



Optional Flood Light Wiring:

Route the on/off switch to the interior of the vehicle. Mount the switch in the desired location. Zip tie any extra loose wiring out of the way.



STEP 35

Installation is now complete.