



# FUEL CAP COVER

(1997-2006 WRANGLER TJ)

---

## INSTALLATION INSTRUCTIONS

### CONTENTS

---

(1) Fuel Door  
(4) Screws

### TOOLS REQUIRED

---

Phillips head screwdriver

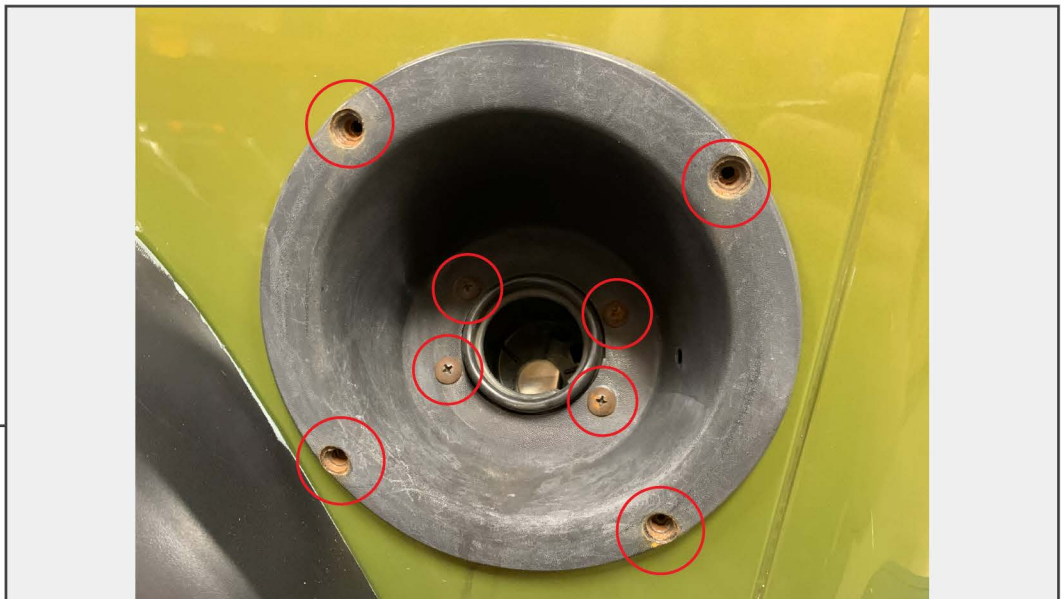
SKU # J138787/J138788

**STEP 1**



Begin by removing the fuel filler cap.

**STEP 2**



Remove the (8) factory fuel trim screws.



**STEP 3**

Install the new fuel door. Secure the filler neck to the fuel door using the supplied screws. Reinstall the filler cap. Installation is now complete.