



FUEL CAP COVER

(1997-2006 WRANGLER TJ)

INSTALLATION INSTRUCTIONS

CONTENTS

(1) Fuel Door
(4) Screws

TOOLS REQUIRED

Phillips head screwdriver

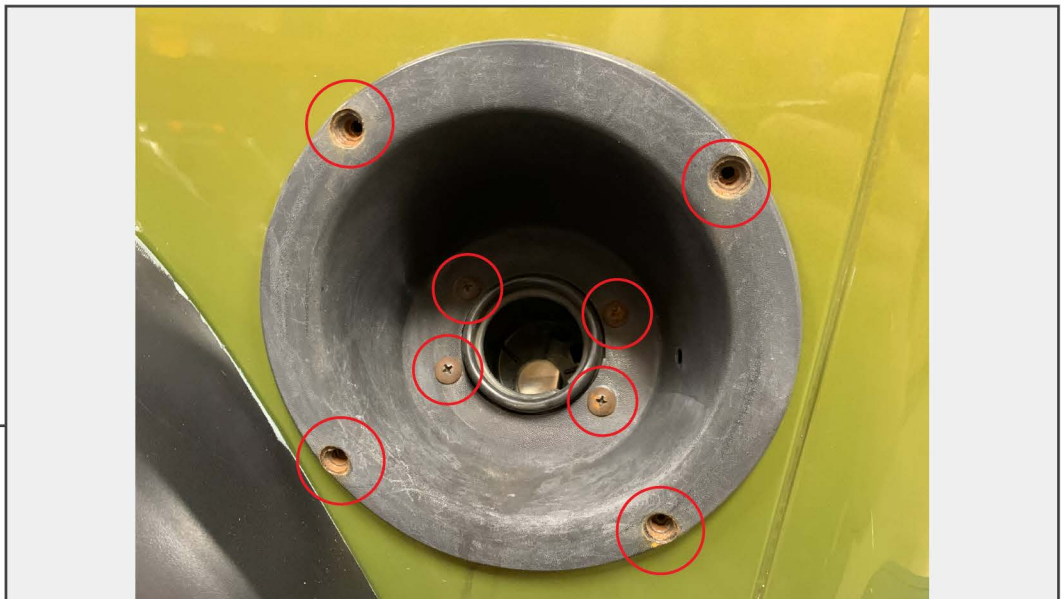
SKU # J138787/J138788

STEP 1



Begin by removing the fuel filler cap.

STEP 2



Remove the (8) factory fuel trim screws.



STEP 3

Install the new fuel door. Secure the filler neck to the fuel door using the supplied screws. Reinstall the filler cap. Installation is now complete.