



FORGED ALUMINUM REAR BUMPER

(2018-2020 WRANGLER JL)

INSTALLATION INSTRUCTIONS

CONTENTS

- (1) Bumper Assembly
- (2) Bumper Supports
- (4) M10 Bolts
- (2) M10 Allen Bolts
- (2) M10 Nuts
- (6) M10 Flat Washers
- (10) M8 Allen Bolts
- (4) M8 Clips
- (10) M8 Flat Washers
- (6) M8 Nuts

TOOLS REQUIRED

- 16mm Socket
- 10mm Socket
- Socket Wrench
- Allen Key Set
- Phillips Screwdriver

SKU # J138357-JL

STEP 1



Remove rear bumper from vehicle, exposing the vehicles frame.

STEP 2



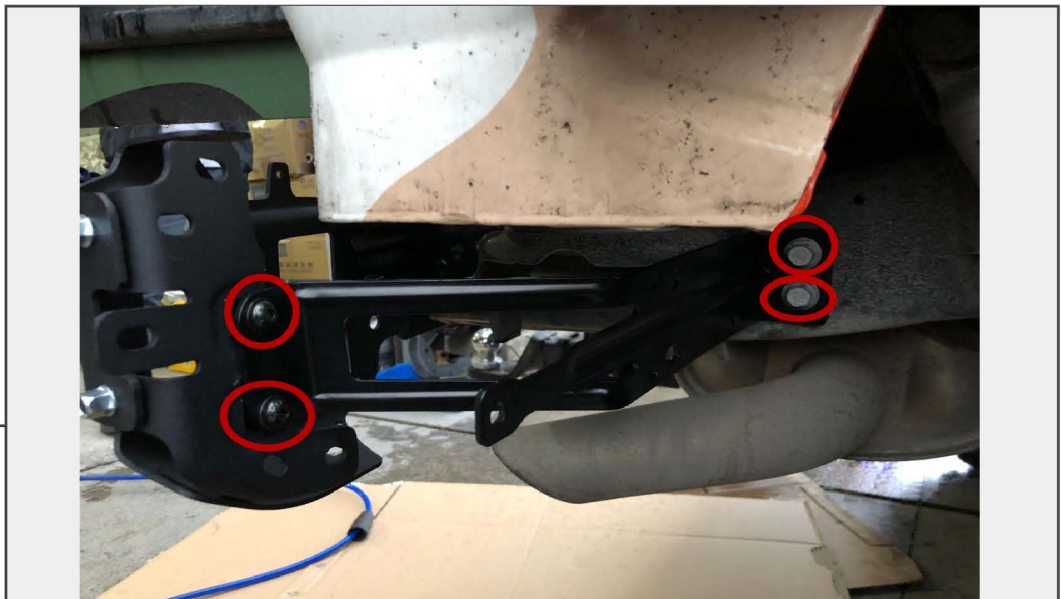
Bolt the side brackets to the outside of the vehicles frame on both sides using (2) original M10 bolts, as well as (2) M10 bolts and (2) M10 washers on both sides.

STEP 3



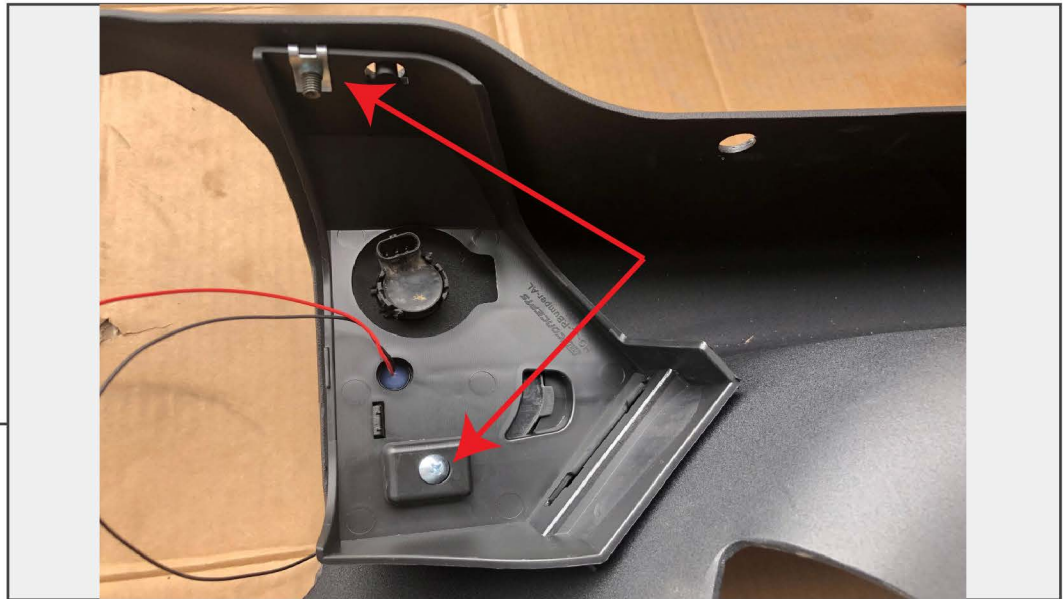
Install (1) M10 Allen bolt and (1) M10 washer on each side underneath the bumper support.

STEP 4



Install (2) original bumper bolts into the support bracket, then once bumper is installed, install (2) M8 allen bolts and (2) M8 washers into the bumper.

STEP 5



Install parking sensors into the bumper. Attach the bumper inserts for the side parking sensors by using (1) M8 bolt and (1) Phillips screw per side.

STEP 6



Using (2) Phillips screws, attach the bumper to the inner support. Install the license plate light inside the bumper. Install plastic cover panel once light is secure.



STEP 7

Install the plastic cover over the middle of the bumper. Installation is now complete.