



THANOS HOOD - STEEL

(2018+ WRANGLER JL)

INSTALLATION INSTRUCTIONS

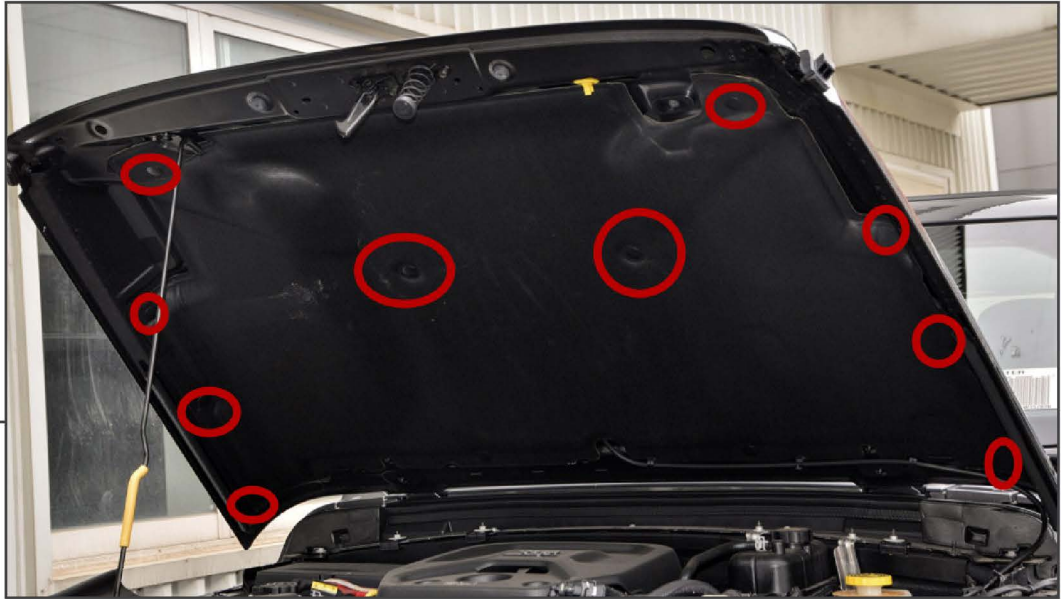
CONTENTS

- (1) Hood
- (2) Plastic Hood Vents

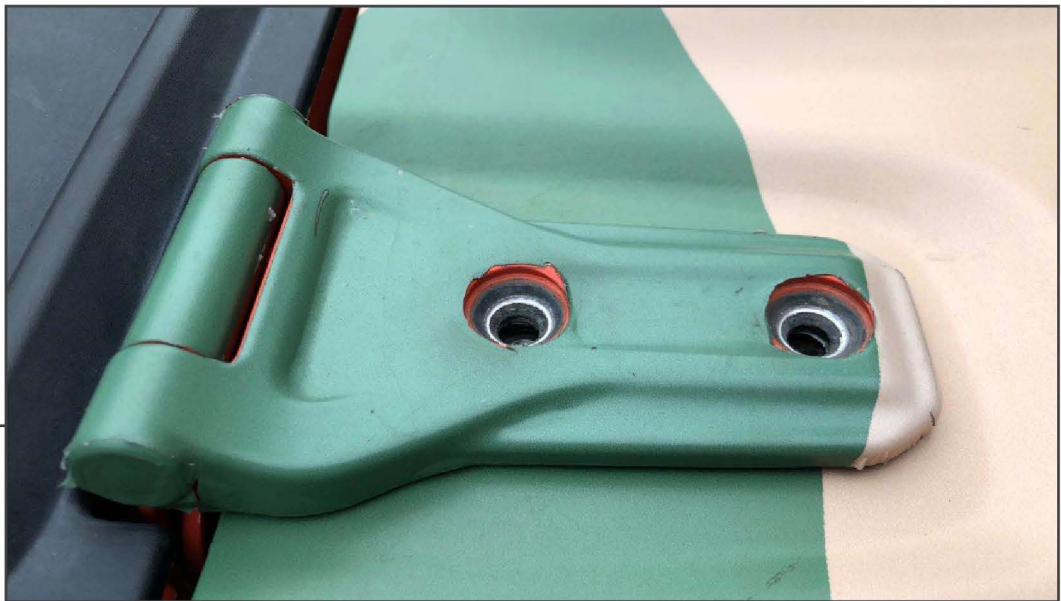
TOOLS REQUIRED

- Trim Panel Removal Tool
- 10mm Socket
- Socket Wrench
- T-50 Torx

SKU # J138353-JL

**STEP 1**

Begin by raising the hood to gain access to the under-hood insulation. Using a panel removal tool, remove the (10) push pins securing the insulation to the hood. Remove the insulation from the vehicle. Disconnect the windshield washer hose.

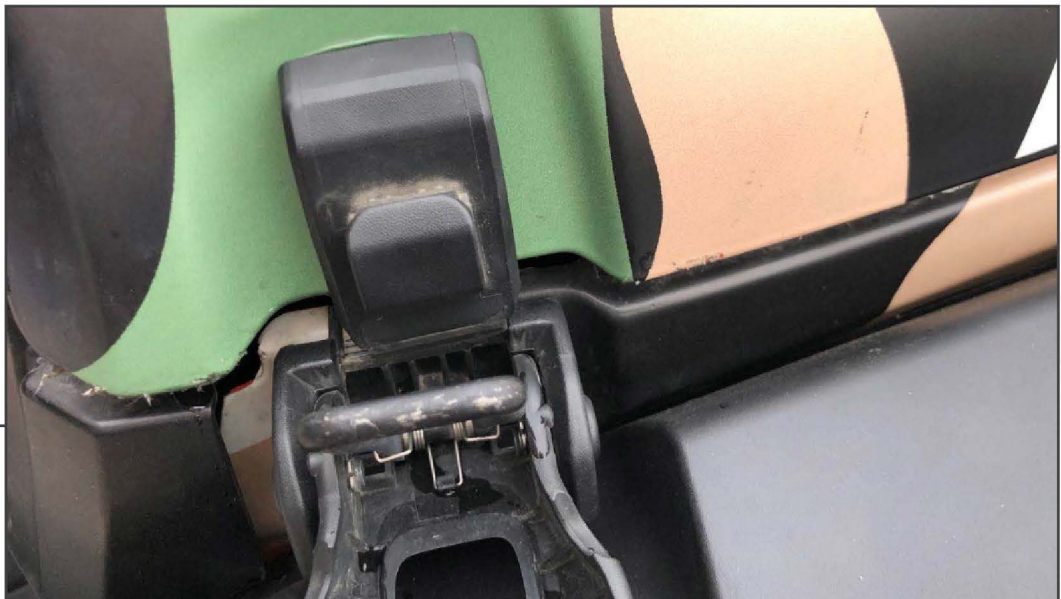
**STEP 2**

Using a T-50 torx bit remove the (2) bolts securing each hood hinge to the hood. Remove the hood from the vehicle.



STEP 3

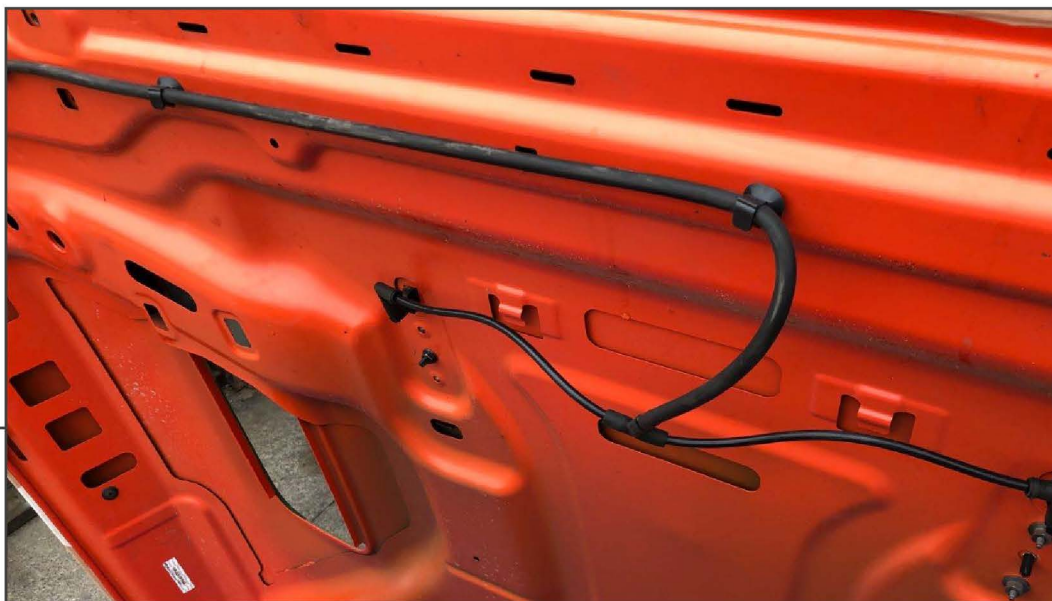
Remove the 10mm bolt securing the hood prop rod to the hood. Transfer the hood prop to the new hood. Reuse the factory hardware.



STEP 4

Using a 10mm socket, remove the left and right side hood latch from the factory hood. Transfer the hood latches to the new hood.

STEP 5



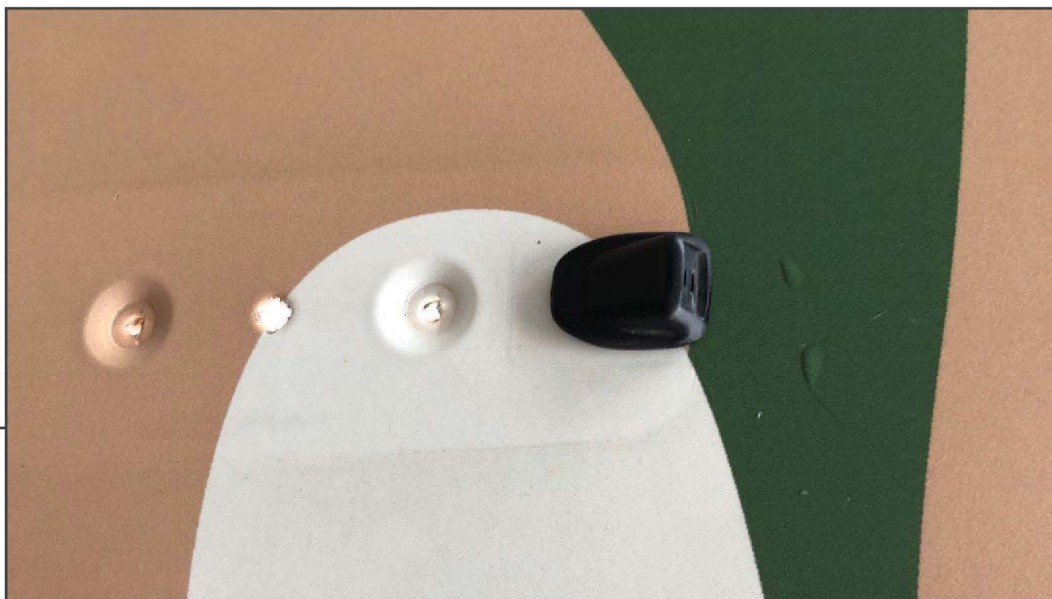
Remove the windshield washer lines from the underside of the hood. Transfer the windshield washer line to the new hood.

STEP 6



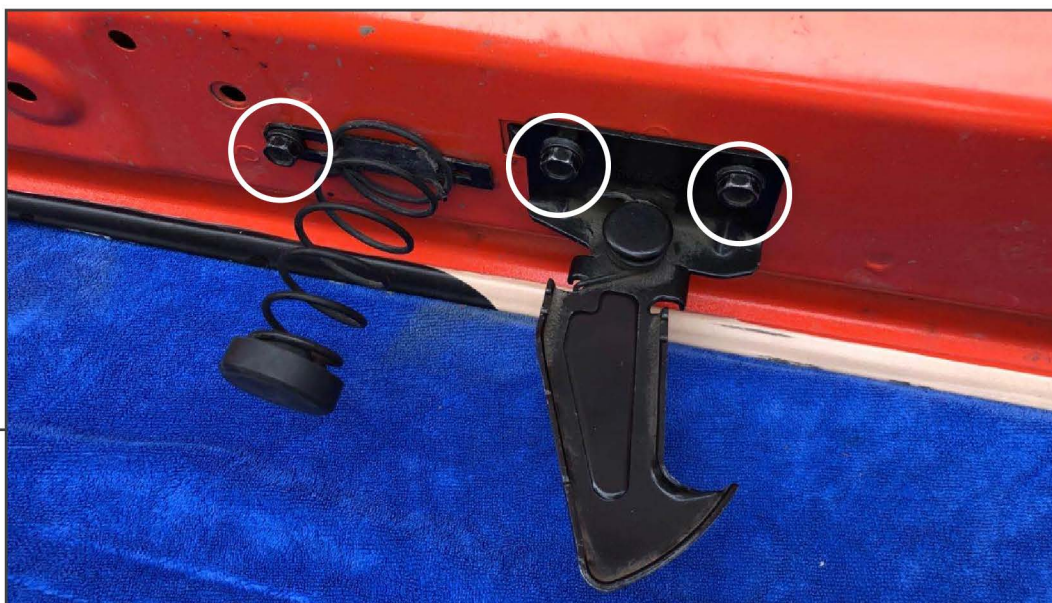
Remove the nozzle cover from the hood.

STEP 7



Remove the (2) windshield washer nozzles and transfer them to the new hood.

STEP 8



Using a 10mm socket, remove the hood safety latch from the under side of the hood. Transfer the hood safety latch to the new hood.



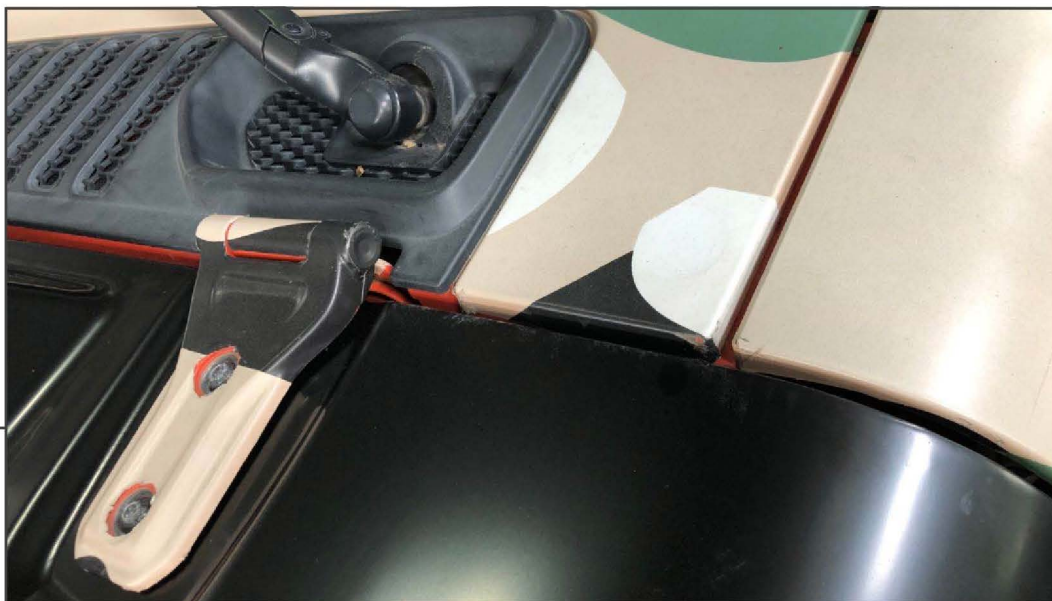
STEP 9

Install the (2) hood vent inserts and windshield washer covers.



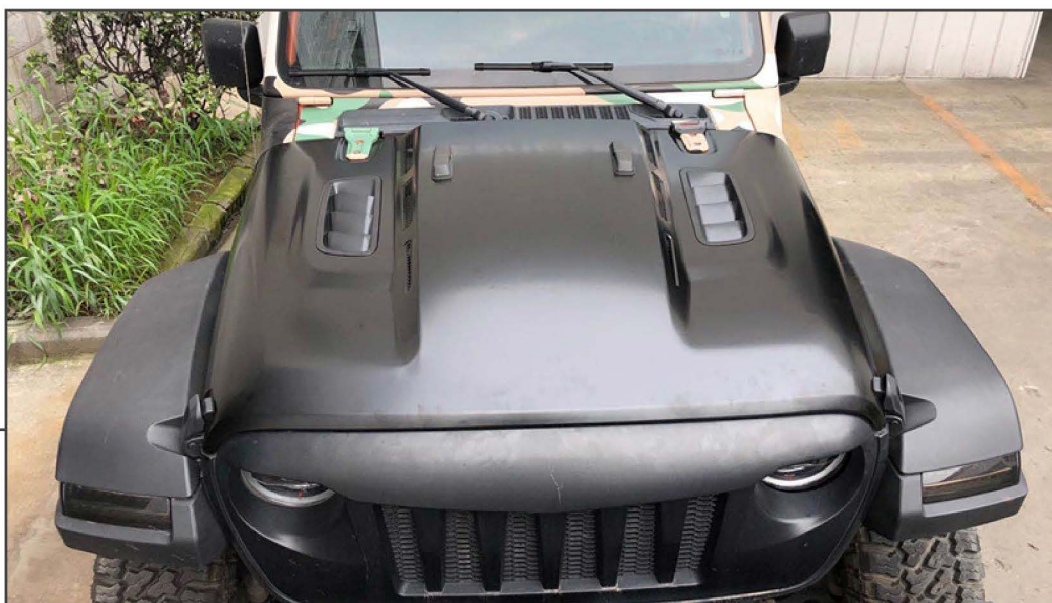
STEP 10

Install the supplied black plastic hood lock inductor to the new hood.



STEP 11

With a helper, install the hood back on the vehicle. Carefully adjust the hood for best fitment. Ensure the gaps are uniform from side to side.



STEP 12

Installation is now complete.