

LED TAIL LIGHTS - SMOKED

(2018+ WRANGLER JL)

INSTALLATION INSTRUCTIONS

CONTENTS

(1) LH Tail Light
(1) RH Tail Light

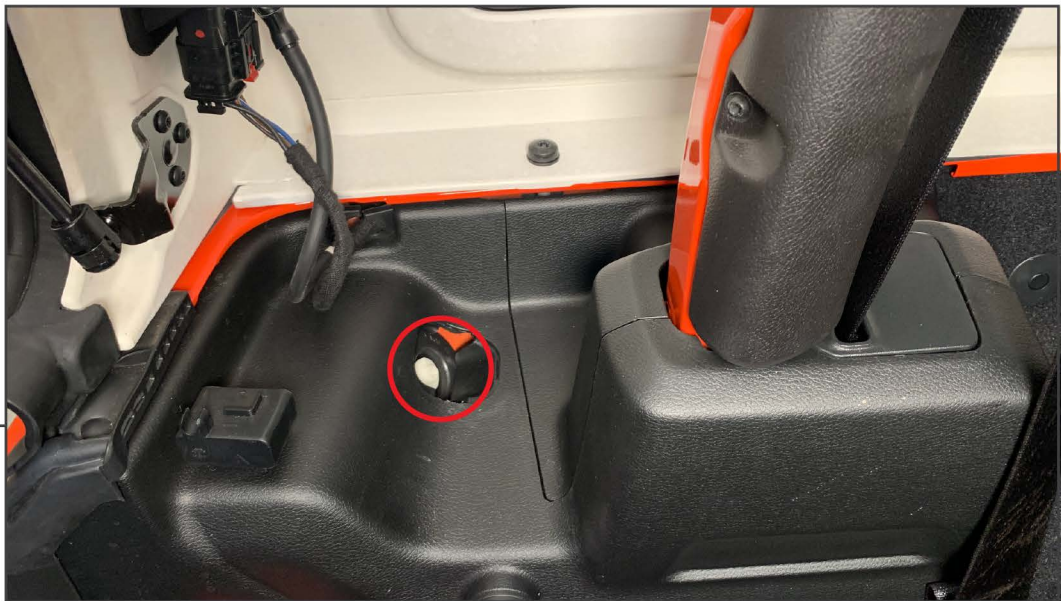
TOOLS REQUIRED

Soft Pry Tool
Phillips Head Screwdriver
Flat Blade Screwdriver
10mm Socket
Socket Wrench



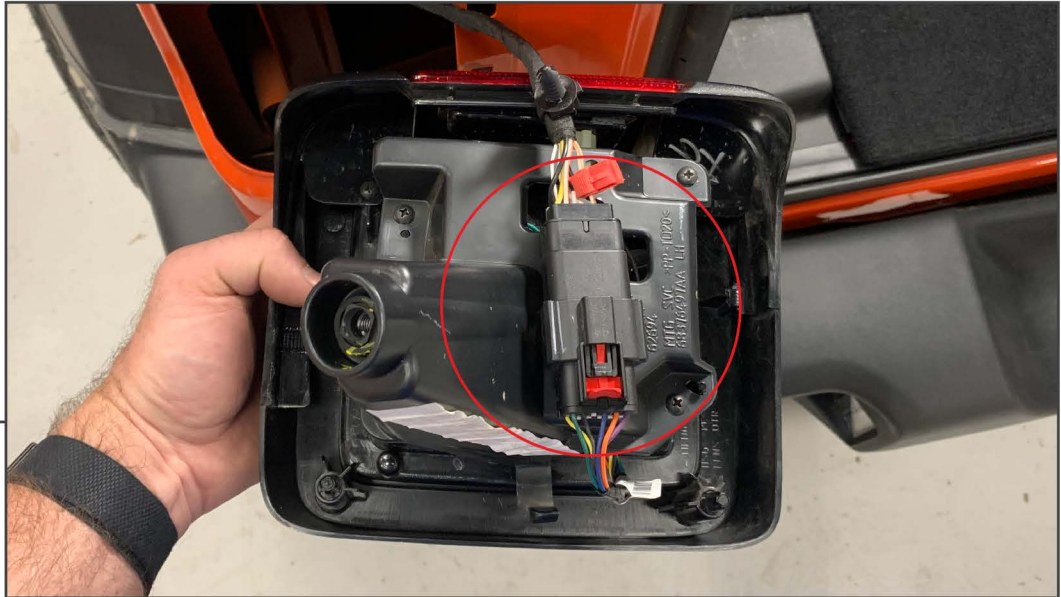
STEP 1

Begin by opening the tailgate to gain access to the tail light retaining bolt. Using a soft pry tool remove the trim panel.



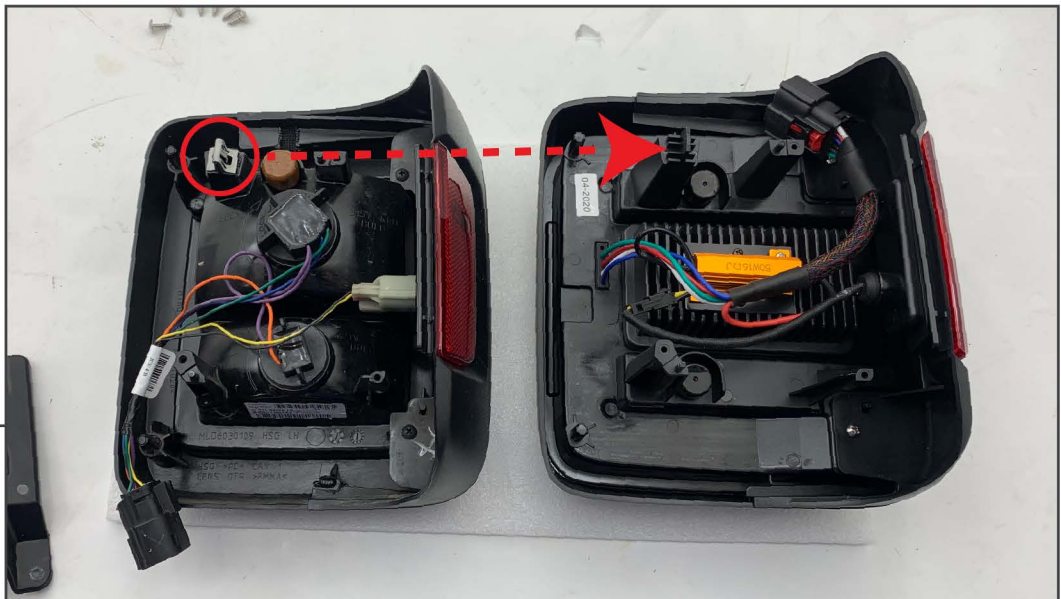
STEP 2

Using a 10mm socket, loosen the tail light retaining bolt.



STEP 3

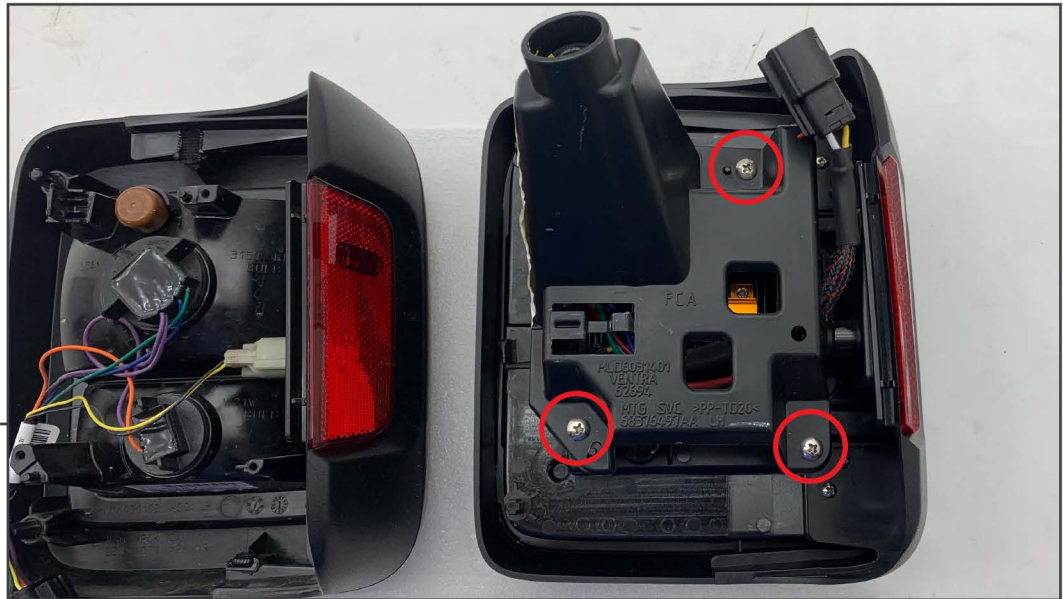
Pull the tail light away from the vehicle. Slide back the plug's red locking tab. Depress the connector and pull it away from the tail light. Disconnect any clips holding the wiring to the tail light.



STEP 4

Lay the tail light face down on a soft surface. Remove the (3) Phillips head screws securing the mounting bracket to the factory tail light. Remove the bracket, and transfer the clip from the factory light to the LED light.

STEP 5



Screw the mounting bracket to the new light using the provided hardware.

STEP 6



Reinstall the LED tail light following Steps 1-3 in reverse order. Installation is now complete.