



---

# ROCK SLIDERS

(2007-2018 WRANGLER JK 4 DOOR)

---

## INSTALLATION INSTRUCTIONS

### CONTENTS

---

- (1) Pair of Side Steps
- (2) Front Pinch Weld Bracket
- (2) Middle Pinch Weld Bracket
- (2) Rear Pinch Weld Bracket
- (6) Nut Plates
- (6) M8x1.25 35mm Bolts
- (6) M8 Lock Washers
- (6) M8 Flat Washers
- (12) M6x1.00 Bolts
- (12) M6 Lock Washers
- (12) M6 Flat Washers
- (6) 3mm Spacers
- (6) 5mm Spacers

### TOOLS REQUIRED

---

- 10, 13mm Sockets
- Socket Wrench

SKU # J136024



### STEP 1

Begin by identifying the mounting locations of the side step.



### STEP 2

Identify the pinch weld bracket by location. Each bracket goes in specific location. Loosely mount each bracket to the vehicle using (1) M8x1.25 bolt, (1) Lock Washer, (1) Flat Washer.

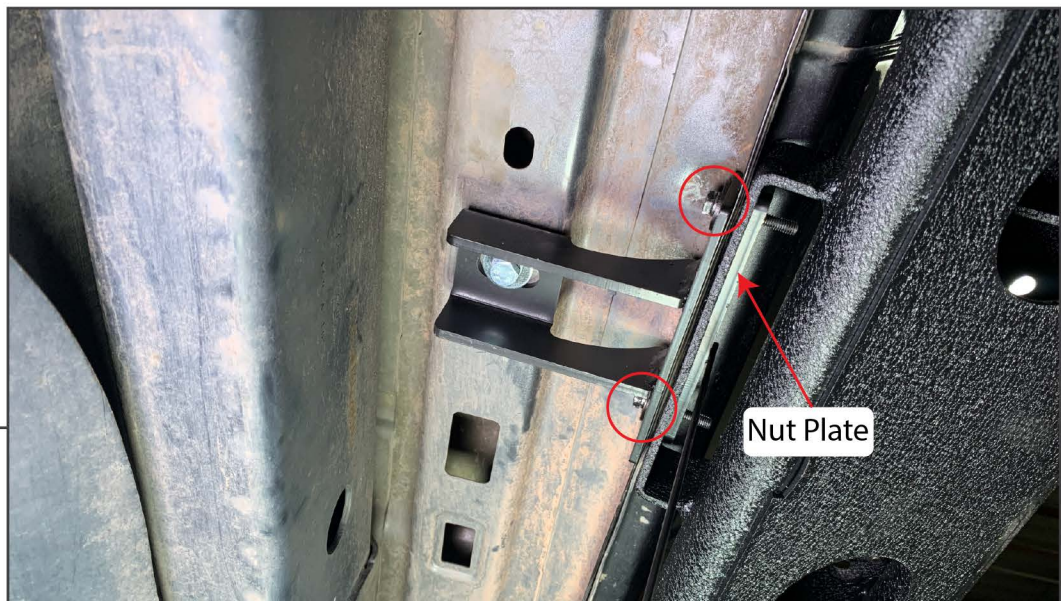


### STEP 3



The larger step pad will be towards the front of the vehicle. With a helper, hold the side step to the vehicle. Loosely install (2) M6x1.00 Bolts, (2) M6 Lock Washers, (2) M6 Flat Washers, (1) Nut Plate on the front mounting location is shown above.

### STEP 4



Loosely install (2) M6x1.00 Bolts, (2) M6 Lock Washers, (2) M6 Flat Washers, (1) Nut Plate on the middle mounting location is shown above.

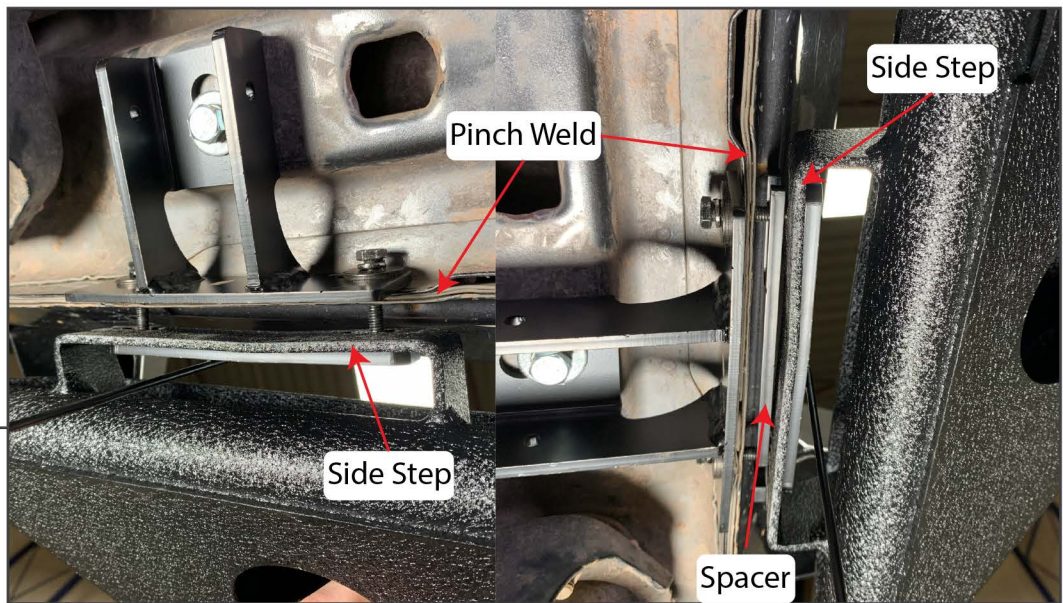


**STEP 5**



Loosely install (2) M6x1.00 Bolts, (2) M6 Lock Washers, (2) M6 Flat Washers, (1) Nut Plate on the rear mounting location is shown above.

**STEP 6**



If the side step is too close to the body, install the supplied spacers between the side step and the pinch weld.



**STEP 7**

Adjust the steps side-to-side as needed. Then tighten all bolts. Remove the nut plate handle by bending the handle back and forth until it breaks off the nut plate.



**STEP 8**

Installation is now complete.