



FORGED FRONT BUMPER ALUMINUM

(2018+ WRANGLER JL)

INSTALLATION INSTRUCTIONS

CONTENTS

(1) Bumper	(6) M12x1.75 30mm Allen Bolts
(1) Winch Plate	(14) M12x1.75 Flange Nuts
(2) Winch Plate Brackets	(6) M12 Washers
(1) Skid Plate	(8) M10x1.50 30mm Allen Bolts
(2) Skid Plate Brackets	(8) M10 Washers
(2) Fog Light Bezels	(8) M10x1.50 Flange Nuts
(1) Fairlead Cover	(5) M8x1.25 Allen Bolts
(2) Fog Light Brackets	(5) M8 Washers
(8) M4x0.7 20mm Allen Bolts	
(8) M4 Washers	
(8) M4 Flange Nuts	
(8) M6x1.0 20mm Allen Bolts	
(12) M6 Washers	
(8) M6 Flange Nuts	

TOOLS REQUIRED

Soft Pry Tool
7,8, 10, 15, 16, 18mm Sockets
7,8, 10, 15, 16, 18mm Wrenches
Socket Wrench
3, 4, 5, 6, 8mm Allen Wrenches

SKU # J134510-JL

STEP 1



Begin by removing the outer bumper covers. Using a soft pry tool, remove the (6) plastic push clips.

STEP 2



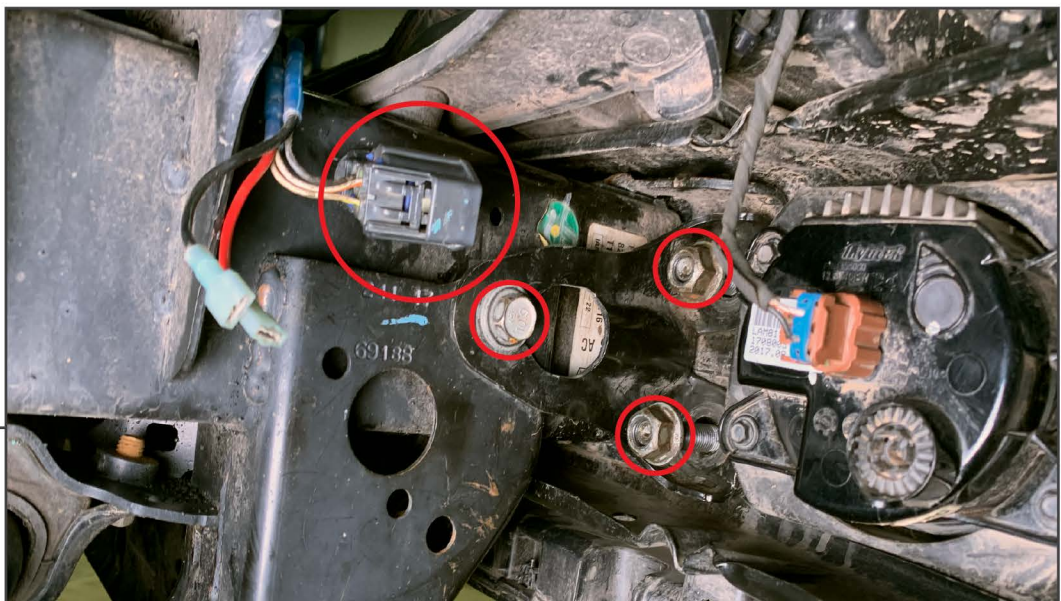
Next, remove the (8) plastic push clips securing the splash shield to the bumper. Remove (2) 8mm screws and remove the splash shield from the vehicle.

STEP 3

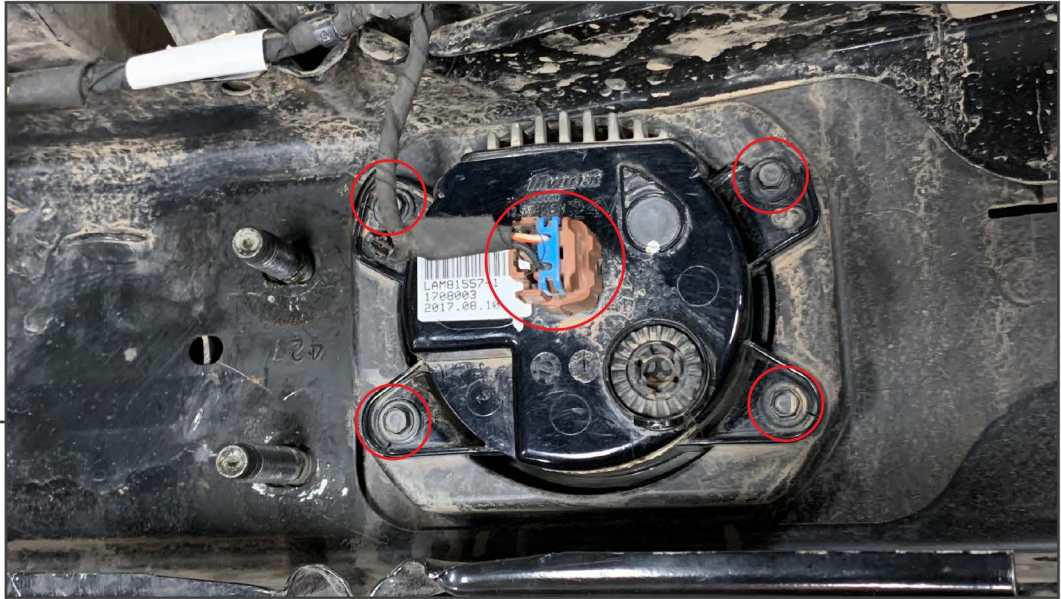


Remove the (2) plastic clips securing the bumper filler panel to the vehicle.

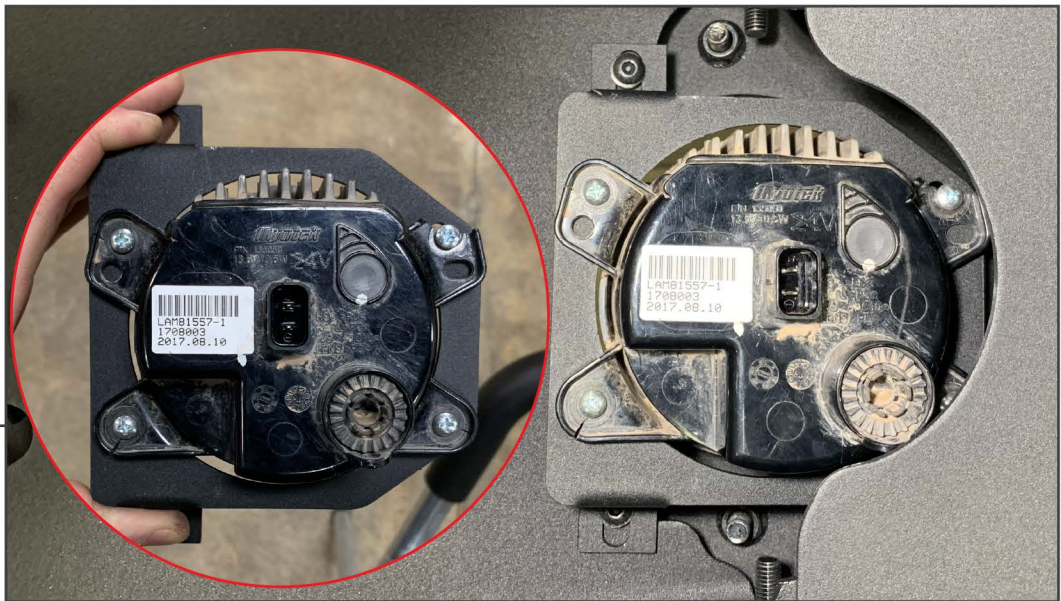
STEP 4



Unplug the bumper wiring harness from the passenger side of the bumper. Then remove the (2) 18mm nuts and (1) 16mm nut on each side of both frame rails. There are (12) total fasteners securing the bumper to the vehicle. With all (12) removed, pull the bumper away from the vehicle and place it on a soft surface face down.

**STEP 5**

Remove the fog light wiring connection. Use a 8mm socket, remove the (4) factory screw securing the fog light to the bumper cover. Repeat the process for both fog lights.

**STEP 6**

Mount the factory fog light to the new fog light bracket using the (4) M4x.7 20mm bolts, (4) flat washers, and (4) nuts per fog light. Then mount the fog light assembly to the bumper using the remaining (2) M6x1.0 20mm bolts, (4) washers, (2) nuts per bracket.



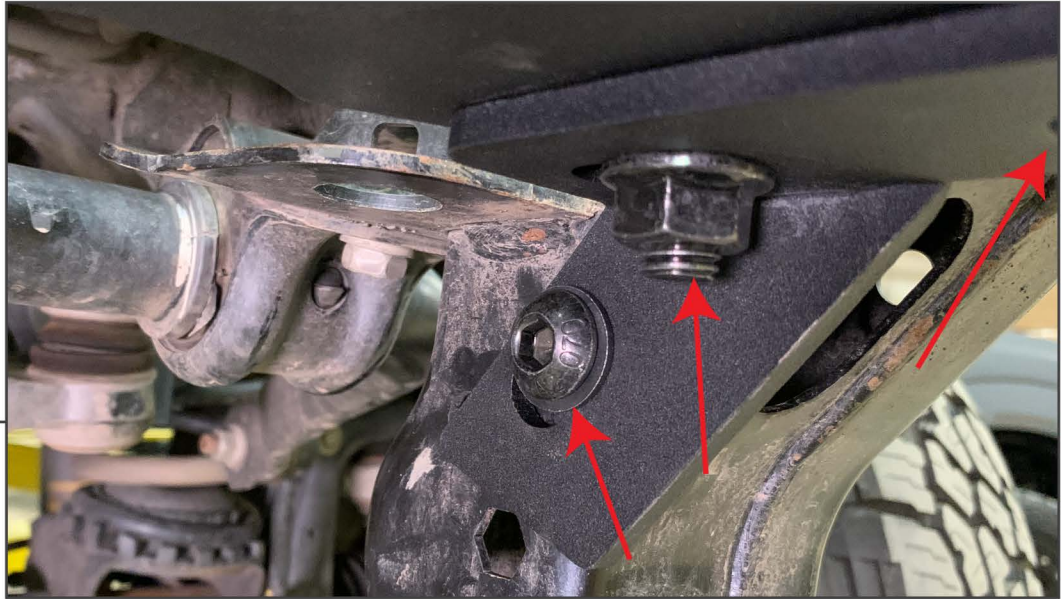
STEP 7

Remove the factory wiring harness from the bumper by separating the bumper into (2) pieces by removing the screws around the outer edge of the bumper. Unclip the wiring harness and transfer it to the new bumper.



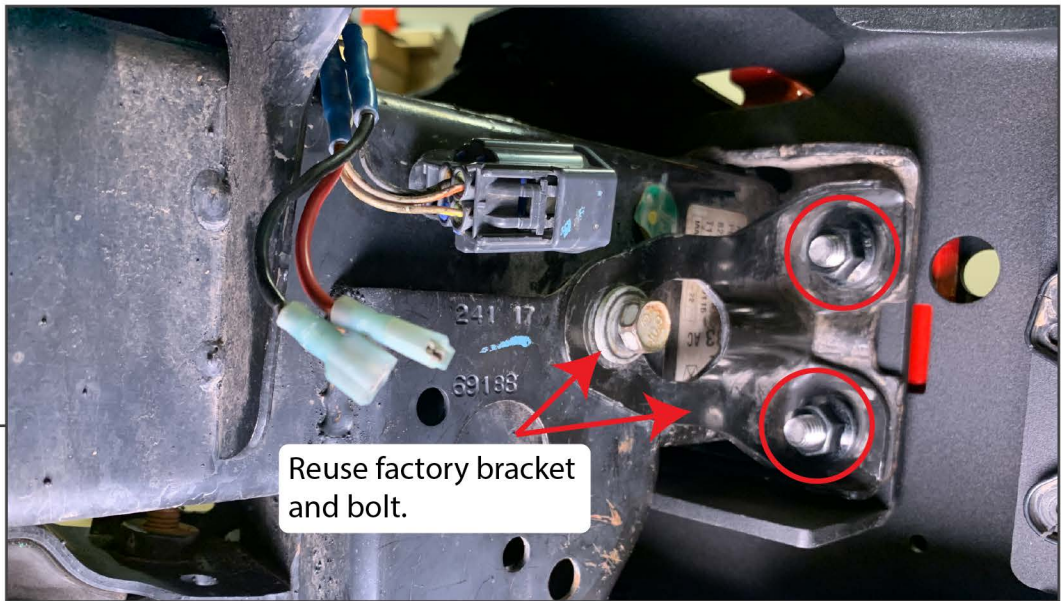
STEP 8

Remove (2) 16mm bolts securing the factory skid plate to the vehicle. Lift the skid plate up to unhook it from the frame rails and remove it from the vehicle.



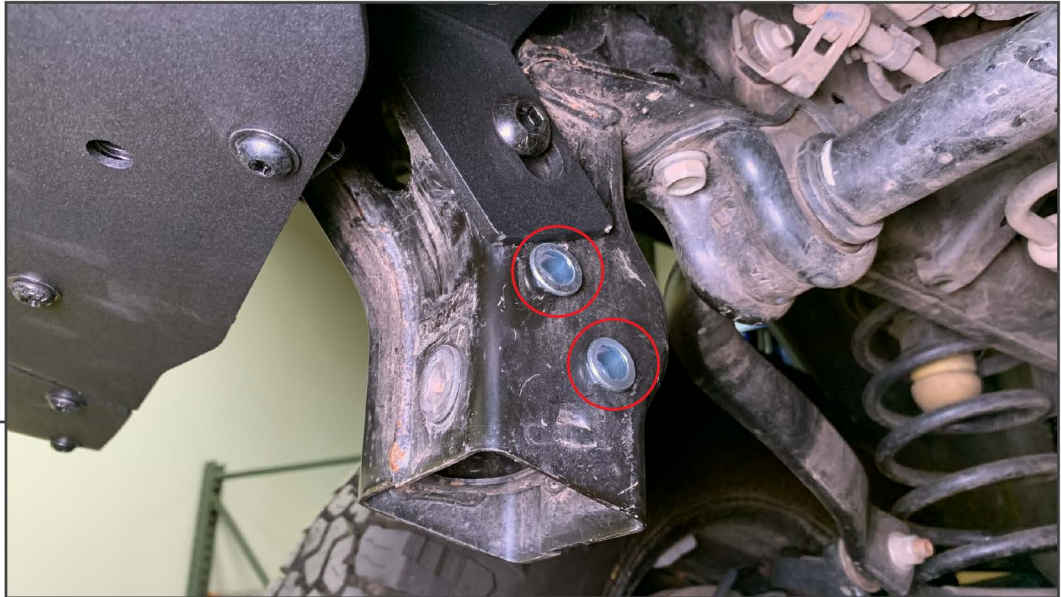
STEP 9

Mount the winch plate to the winch plate brackets using M12 (2) M12x1.75 30mm bolt, (2) washers, (2) flange nuts per bracket. Mount the winch plate to the vehicle using (1) M12x1.75 30mm bolt, (1) flat washer, (1) flange nut per bracket.



STEP 10

Bolt the bumper to the vehicle reusing the bumper bracket and bolt. Use (2) M12x1.75 nuts on each side of the frame rail.



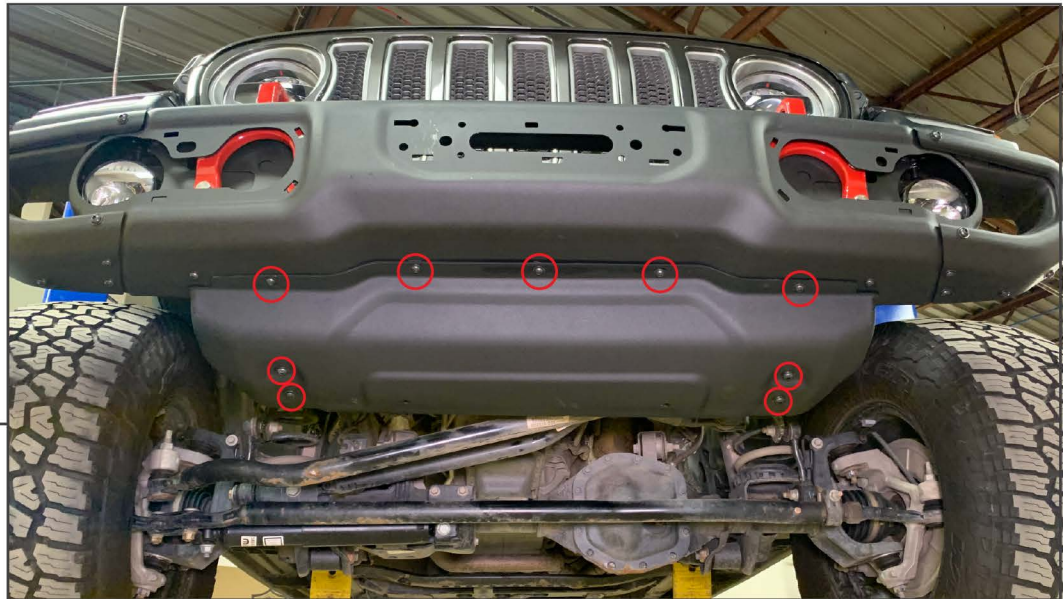
STEP 11

Place the (2) hexagonal M10x1.5 rivnuts into the inner frame rails.



STEP 12

Install the skid plate brackets using (2) M10x1.50 30mm bolts, (2) M10 washers, and (2) M10 Flange nuts per bracket.

**STEP 13**

Install the skid plate to the vehicle. From behind, bolt the skid plate brackets to the inner frame rails using (2) M10x1.50 30mm bolts, (2) M10 washers per bracket. These will bolt into the hexagonal rivnuts from Step 11. Screw the front edge of the skid plate into the bumper using (5) M8x1.25 35mm bolts, and flat washers.

**STEP 14**

Bolt-on the fog light bezels using the (2) M6x1.00 20mm bolts, (2) M6 washers, (2) M6 Flange nuts per bezel. Press on the fairlead cover to complete the installation.