



## Installation Instructions Targa Style Sun Bikini Top

**Vehicle Application:**  
Jeep® Wrangler JL and Wrangler JL Unltd 2018-Current  
Part Number 52606 (Requires 51244)

### Installation Tips

Before you begin installing your new Targa Style Sun Bikini Top, please read all the instructions thoroughly.



#### **WARNING**

Do not rely in any way on the components of this product to protect against injury or death in the event of an accident. Never operate the vehicle in excess of manufacturer's specifications.

Read and follow, precisely, all installation instructions provided when installing this product. Failure to do so may result in a poor fit and could place occupants of the vehicle in a potentially dangerous situation.

#### **WEAR SEAT BELTS AT ALL TIMES**



#### **CAUTION**

Safety glasses should be worn at all times when installing this product.



### Tools



Safety Glasses



T25 - T40 - T50  
Torx Drivers



Phillips Screwdriver



13mm Wrench

### Installation Time



30 minutes

### Skill Level



1 - Easy

### Support

We're here to help! Go to:  
<https://www.bestop.com>  
and click on **Need Help?**



<https://www.bestop.com/video-library>



## Installation Instructions Targa Style Sun Bikini Top

Vehicle Application:  
Jeep® Wrangler JL and Wrangler JL Unltd 2018-Current  
Part Number 52606 (Requires 51244)

### Sugerencias de Instalación

**Antes de empezar a instalar esta unidad, lea atentamente todas las instrucciones.**

**Para un buen ajuste:**

Para facilitar la instalación, el producto debe instalarse a temperaturas superiores a 72 °F (22 °C).

Por debajo de esta temperatura, la tela puede encogerse una pulgada o más, lo que dificultaría su ajuste al vehículo.

Es normal que la tela se contraiga o arrugue cuando está guardada en la caja de empaque. A los pocos días después de la instalación, la tela se relajará y las arrugas desaparecerán.



#### ADVERTENCIA

Este producto se diseñó principalmente para mejorar la apariencia del vehículo y proteger a los ocupantes de las condiciones climáticas comunes. De ninguna manera piense que los componentes de este producto pueden servir como medio de contención para los ocupantes del vehículo o que pueden protegerlos contra lesiones o la muerte en caso de accidente. Este producto no protegerá a los ocupantes contra caídas de objetos. Nunca conduzca este vehículo fuera de las especificaciones del fabricante.

#### USE LOS CINTURONES DE SEGURIDAD EN TODO MOMENTO

Lea y siga con precisión todas las instrucciones de instalación que se proporcionan para instalar este producto. Si no lo hace, podría producirse un mal ajuste que colocaría a los ocupantes del vehículo en una situación potencialmente peligrosa.



#### PRECAUCIÓN

Debe usar gafas protectoras en todo momento durante la instalación de este producto.

### Conseils pour l'installation

**Lire toutes les instructions au complet avant de commencer l'installation de cet assemblage.**

**Pour un ajustement sans problème :**

Afin de faciliter l'installation, ce produit doit être installé à des températures au-dessus de 72 °F (22 °C).

Sous cette température, le tissu peut rétrécir d'un pouce (2,5 cm) ou plus, ce qui rendra l'ajustement sur le véhicule difficile.

Il est normal que le tissu rétrécisse et plisse pendant qu'il est dans la boîte d'expédition. En quelques jours après l'installation, le tissu se détendra et les plis disparaîtront.



#### AVERTISSEMENT

Ce produit est conçu principalement pour améliorer l'apparence du véhicule et pour protéger les occupants des conditions météorologiques usuelles. Ne jamais se fier aux composants de ce produit pour se protéger de blessures ou de la mort en cas d'accident. Ce produit ne protégera pas les occupants des chutes d'objets. Ne jamais utiliser le véhicule au-delà des caractéristiques techniques indiquées par le fabricant.

#### PORTER UNE CEINTURE DE SÉCURITÉ EN TOUT TEMPS

Lire et suivre, très fidèlement, toutes les instructions d'installation fournies lors de l'installation de ce produit. Ne pas suivre cette consigne peut causer une installation inadéquate et mettre les occupants du véhicule dans une situation potentiellement dangereuse.



#### MISE EN GARDE

Des lunettes de sécurité doivent être portées en tout temps lors de l'installation de ce produit.

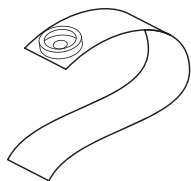
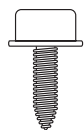


## Installation Instructions Targa Style Sun Bikini Top

**Vehicle Application:**  
Jeep® Wrangler JL and Wrangler JL Unltd 2018-Current  
Part Number 52606 (Requires 51244)



Snap Stud Screw  
#8 x 1"  
Part #592.71  
Qty. 4



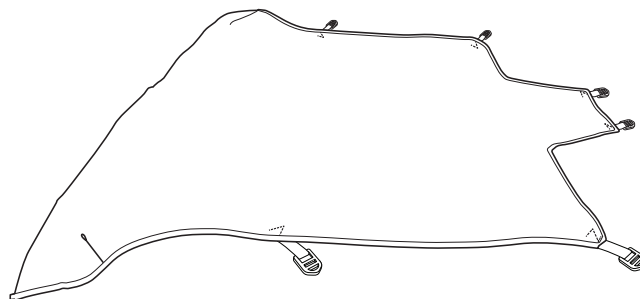
Snap Straps  
2 - Short Part #590.38  
2 - Long Part #592.31



44 "Web Strap  
Part #528.70  
Qty. 1



Plastic Bushing  
Part #235.91  
Qty. 4



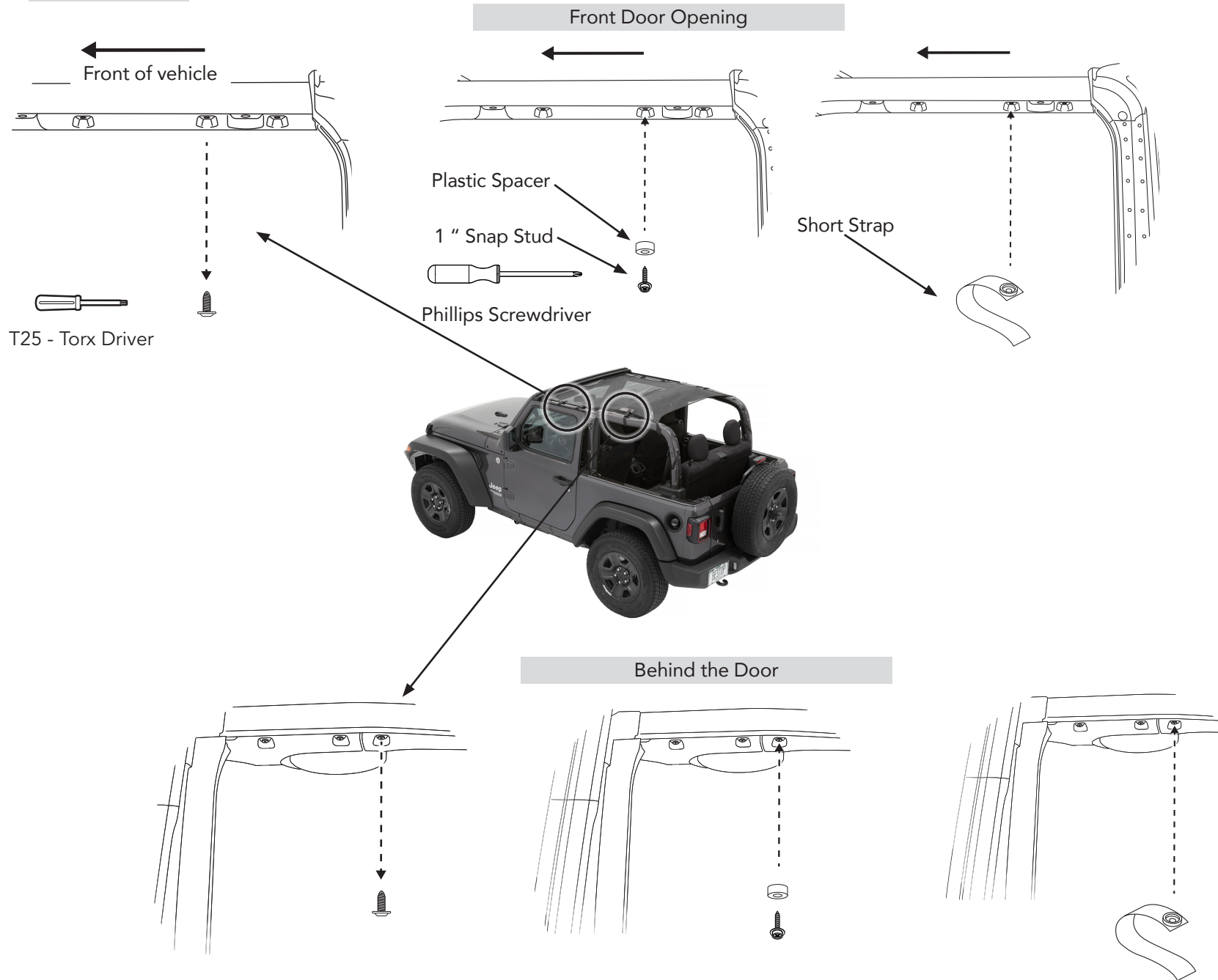
Targa Style Sun Bikini Top  
Qty. 1



Tail Clip  
Part #338.24  
Qty. 6

## Section 1

## Remove Torx Screws and Install Spacers, Snap Studs and Straps Wrangler (2 Door)

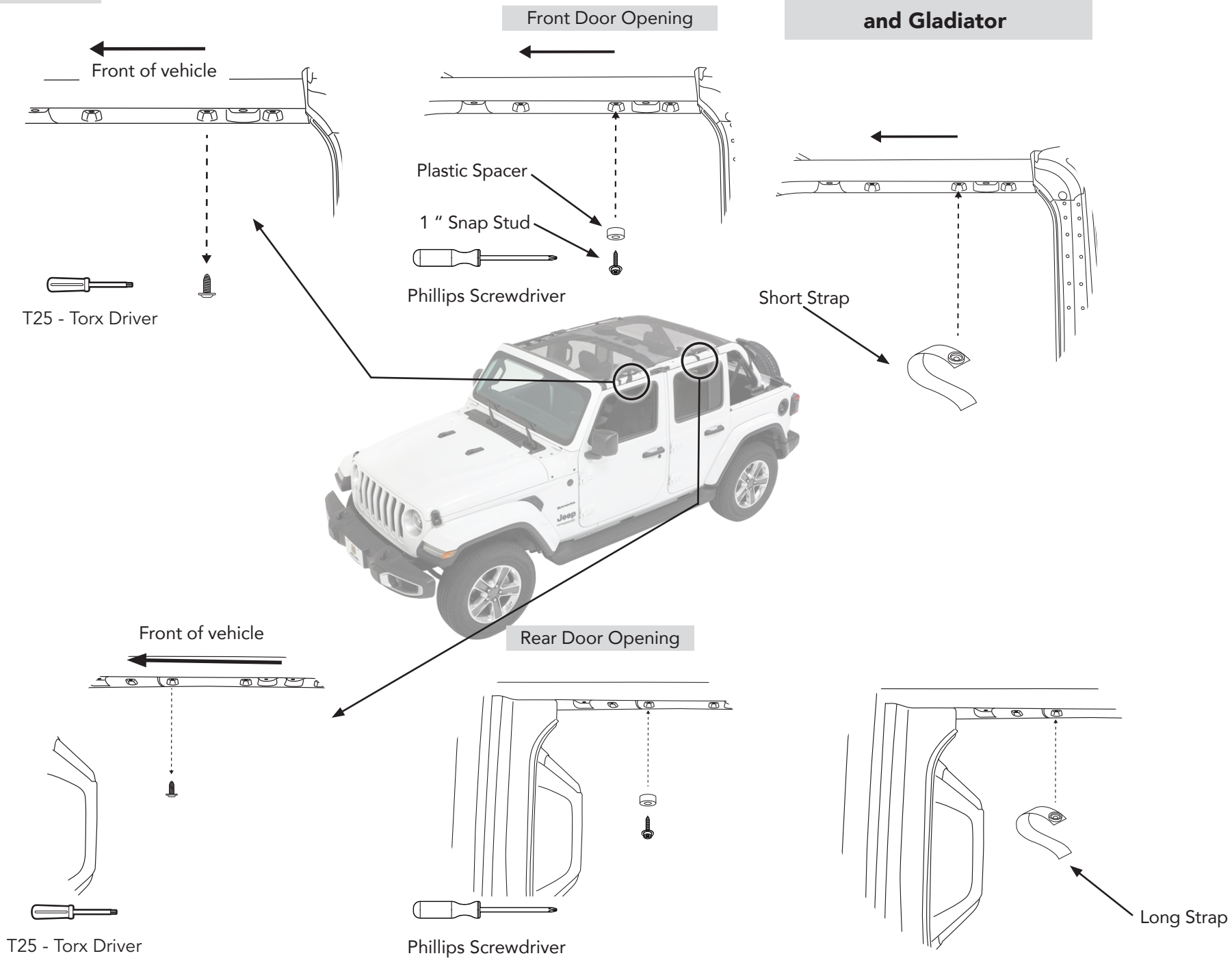


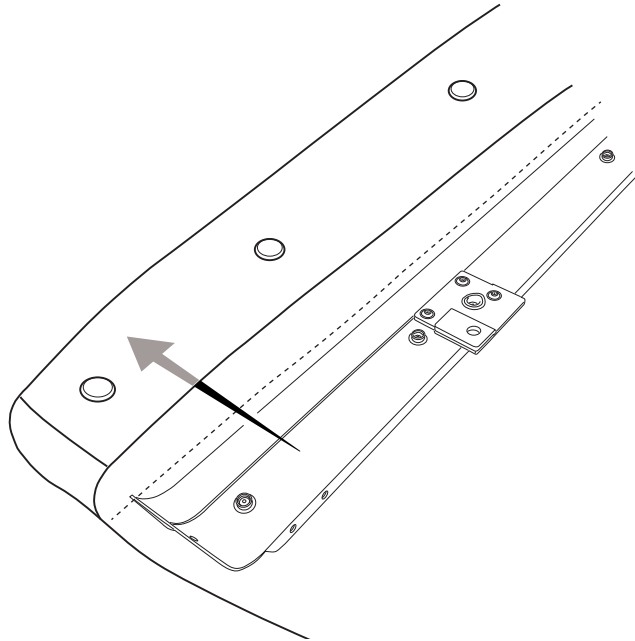
## Section 1

## Remove Torx Screws and Install Spacers, Snap Studs and Straps

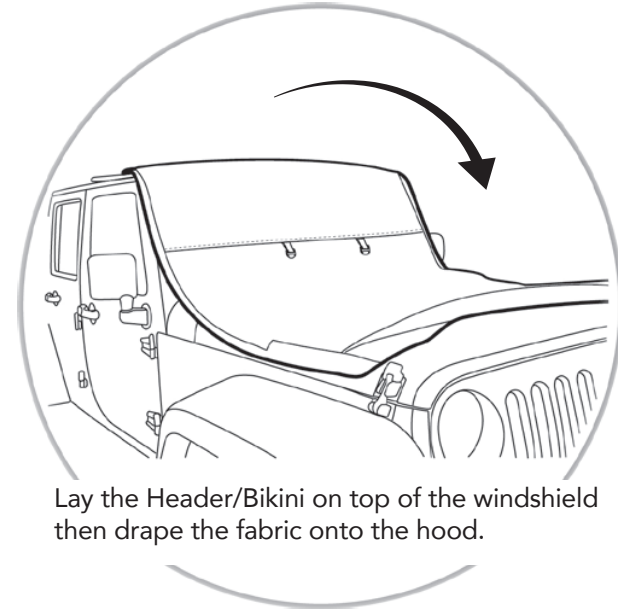
## Wrangler Unlimited (4 Door) and Gladiator

Page 5

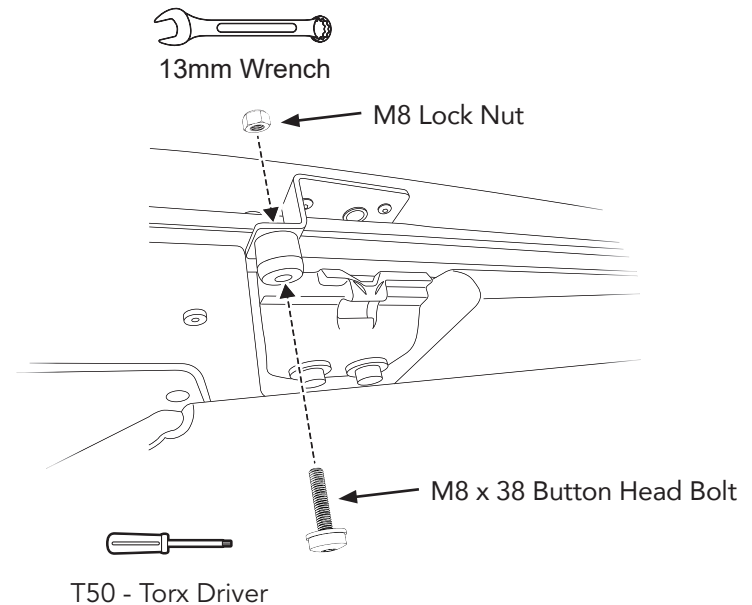
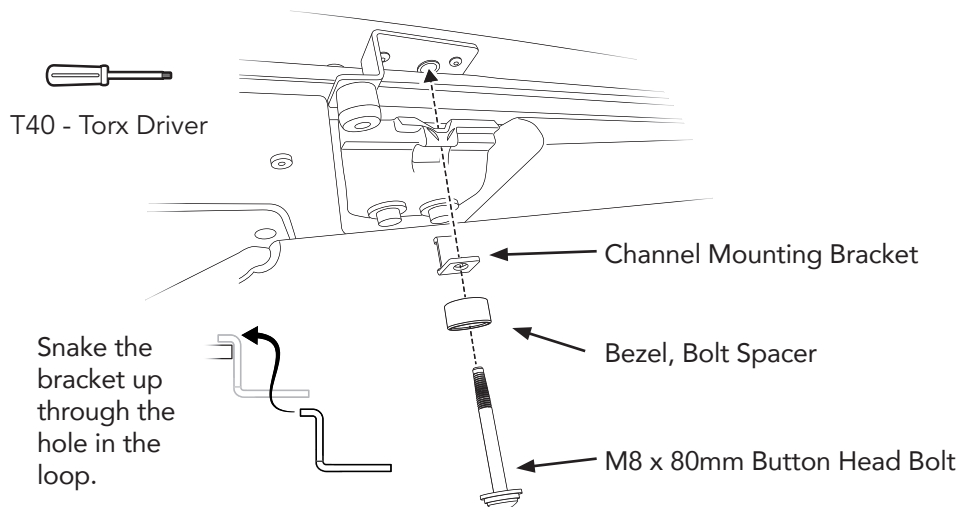




Slip your Header (Sold Separately) into the Bikini Top and attach it with the 8 snaps.

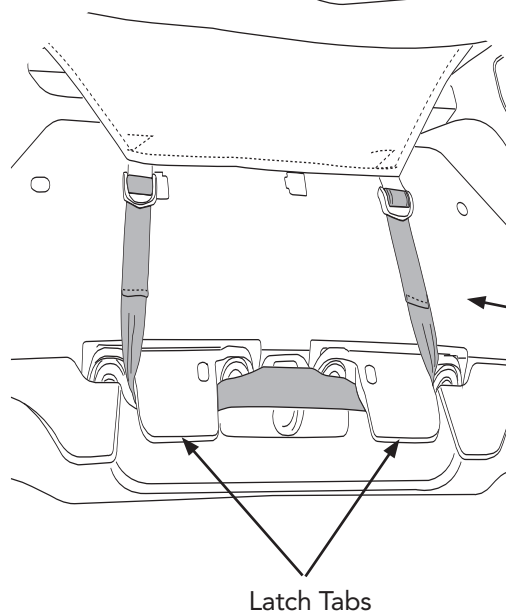


Lay the Header/Bikini on top of the windshield then drape the fabric onto the hood.

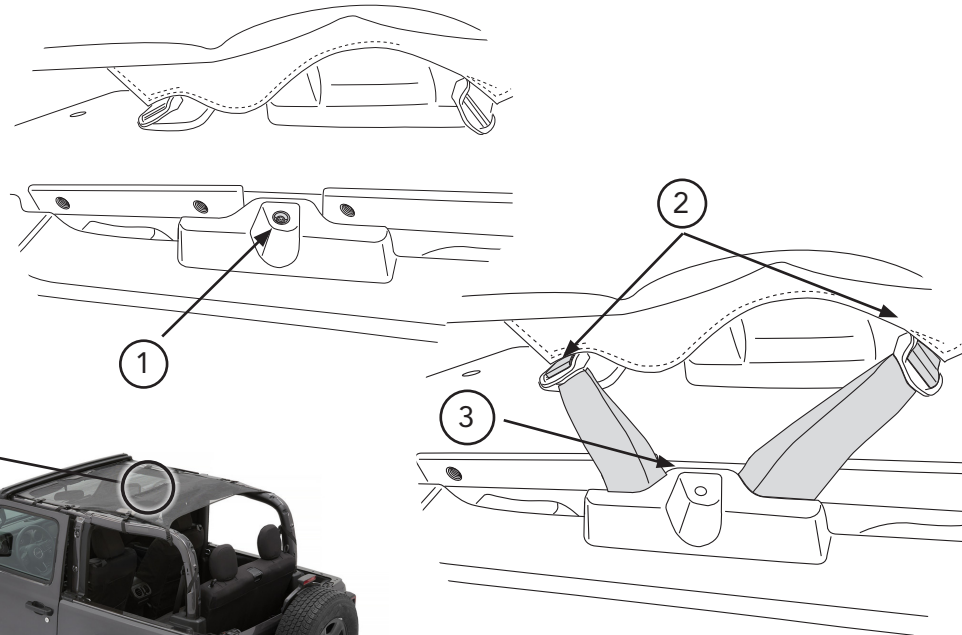


**Vehicles with Latch Tabs**

View from inside the vehicle



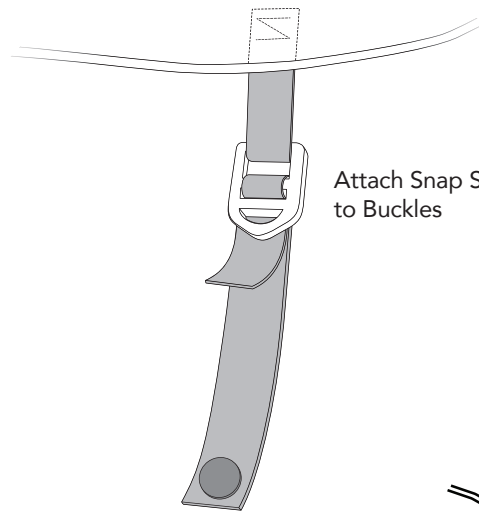
Loosely thread the 44 inch Nylon Strap through the two buckles on the center flap (Located on the inside of the main top)  
Locate the two tabs that the rear latches of the Freedom Panels latch to. Wrap the 44 inch Nylon Strap underneath the tabs then pull the strap (at the buckles) until snug.

**Vehicles without Latch Tabs**

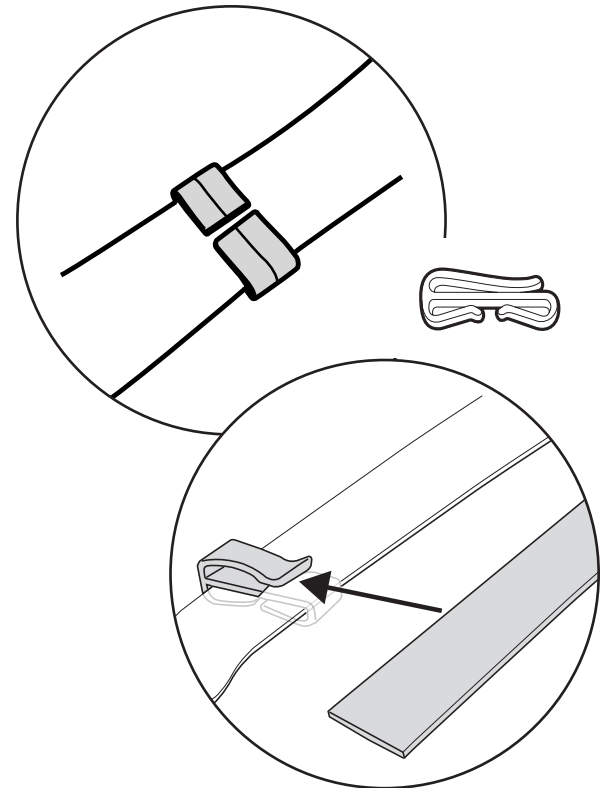
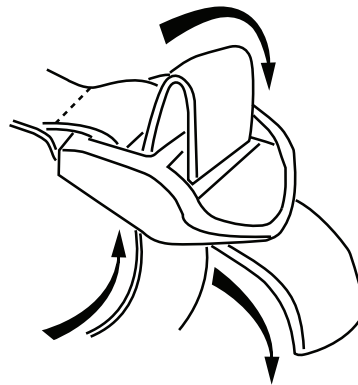
- ① Remove screw from center of plastic trim piece.
- ② Thread the Strap into the buckles on the Center Flap.
- ③ Pull back on plastic enough to slide the strap down below the hole for the screw.

Replace the screw.





Attach Snap Straps  
to Buckles







## Care and Maintenance of your Bestop Product

Your Bestop product is made of the finest materials available. To keep it looking new and for the maximum possible wear, it will need periodic cleaning and maintenance.

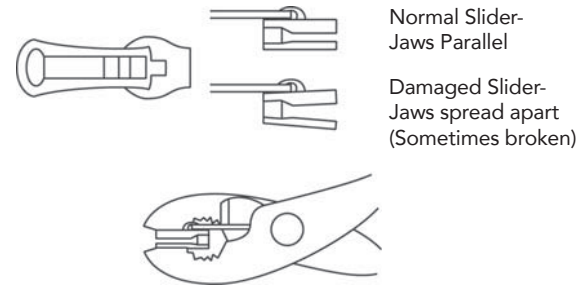
**Fabric:** The fabric should be washed often using soap, warm water and a soft bristle brush. Rinse with clear water to remove all traces of soap. Bestop recommends using Bestop Cleaner (part no. 11201-00) and Bestop Protectant (part no. 11202-00) for Vinyl fabric and Bestop Twill Protectant (part no. 11207-00) for Twill fabric. Bestop Cleaner and Bestop protectant are specially formulated to provide a total cleaning and protection system. Bestop Cleaner safely removes the toughest stains, will not harm vehicle finishes, is biodegradable and environmentally friendly. Bestop Protectant protects against UV-fading, cracking and hardening, and repels dust, grease, dirt and mildew.

**Windows:** Keep windows clean to avoid scratching. DO NOT use a brush on the windows! Wash with a water-soaked cloth or sponge and a mild dishwashing detergent. Bestop recommends Bestop Vinyl Window Cleaner (part no. 11203-00), which safely cleans and protects vinyl windows and helps prevent UV damage. NEVER WIPE THE WINDOWS WHEN THEY ARE DRY. Be careful when cleaning snow or frost from the vinyl windows since they are easily scratched and may crack at low temperatures. DO NOT roll the sides or rear window in cold weather. The windows become stiff and will crack. Cracks caused by misuse in cold temperatures are not covered under warranty.

**Water:** Seeping through at the seams may be stopped by applying 3-M Scotchgard® on the inside of the seams.

**Snap:** Keep snaps cleaned and lubricated with silicone to help prevent snaps from sticking to the studs. If a snap does become stuck to a stud, use a screwdriver and GENTLY pry apart to prevent permanent damage to the snap or the top fabric.

**Zippers:** Keeping zippers cleaned and lubricated with Bestop's Zipper Cleaner (part no. 11206-00) will help prevent damage and keep the zippers in smooth working condition. If a zipper opens behind the slider, the slider may have been spread apart. This problem can usually be repaired by using an ordinary pair of pliers to bring the sides back into parallel. Return slider to the end of the zipper in the normal Open position. Squeeze lightly at first and test the zipper. If the zipper continues to remain open squeeze more firmly with the pliers and try the zipper again. Repeat this procedure until the zipper operates correctly.



**For Bestop Warranty Information, Please go to;**  
<https://www.bestop.com/help/warranty-information/>





# FIND THE RIGHT BIKINI® TOP

BIKINI TYPE		YEAR	MODEL	DRILLING REQUIRED	PARTS NEEDED	DOOR SURROUNDS	TOP MATERIAL	PART NUMBER
SUNSHADE		2010-18	Jeep Wrangler JK	No	Compatible with Sunrider for Hardtop ONLY	N/A	Mesh	52406
		2007-18	Jeep Wrangler JK	No	Compatible with soft tops except Trektop and Trektop Pro	N/A	Mesh	52405
TRADITIONAL BIKINI		1976-91	CJ7/CJ8/ Wrangler YJ	Yes	51209	N/A	Black Crush, Tan, Charcoal/Gray, Mesh	52508
		1976-83	CJ5	Yes	51209	N/A	Black Crush, Tan	52507
		1972-80	Scout II	Yes	51207	N/A	Black Crush	52550
		1966-77	Bronco	Yes	51206	N/A	Black Crush	52542
		1964-84	FJ40	Yes	51209	N/A	Black Crush	52540
		1951-81	M-38A1/CJ5/ CJ6	No	Factory Channel	N/A	Black Crush	52505
STRAPLESS HEADER BIKINI		1997-02	TJ	Yes	51210	N/A	Black Denim, Spice	52521
		1986-91	YJ	Yes	51209	N/A	Black Crush, Black Demin	52509
		1992-95	YJ	Yes	51209	N/A	Black Denim, Spice	52519
		1980-86	CJ7	Yes	51209	N/A	Black Crush, Black Demin	52518
		1986-94	Samurai	No	Factory Channel	N/A	Black Crush, Black Denim	52561
		1995-98	Tracker/Sidekick	No	Factory Channel	N/A	Black Denim	52562
		1988-94	Tracker/Sidekick	No	Factory Channel	N/A	Black Denim	52570
STRAPLESS SAFARI BIKINI		1997-02	TJ	Yes	51210	N/A	Black Denim, Spice	52530
		1992-95	YJ	Yes	51209	N/A	Black Denim, Charcoal/ Gray, Spice	52529
CABLE STYLE TARGA AND SAFARI BIKINI		2020-Current	Gladiator	No	Included	N/A	Black Diamond	52615
		2018-Current	JL	No	Included	N/A	Black Diamond	52607
		2018-Current	JLU	No	Included	Factory Door Surrounds	Black Diamond	52608
		2010-18	JK	No	Included	Factory Door Surrounds	Black Diamond, Mesh	52593
		2010-18	JKU	No	Included	Factory Door Surrounds	Black Diamond, Mesh	52594



# FIND THE RIGHT BIKINI® TOP

BIKINI TYPE		YEAR	MODEL	DRILLING REQUIRED	PARTS NEEDED	DOOR SURROUNDS	TOP MATERIAL	PART NUMBER
HEADER STYLE TARGA BIKINI		2018-Current	JL/Gladiator	No	51244	N/A	Black Diamond	<b>52606</b>
		2010-18	JK (2-Door)	No	51243	N/A	Black Diamond	<b>52586</b>
		2007-09	JK (2-Door)	No	51243	N/A	Black Diamond	<b>52580</b>
		2003-06	TJ	No	51238	N/A	Black Diamond	<b>52528</b>
		1997-2002	TJ	No	51238	N/A	Black Denim, Spice	<b>52525</b>
HEADER STYLE SAFARI BIKINI		2020-Current	Gladiator	No	51244	N/A	Black Diamond	<b>52614</b>
		2018-Current	JLU	No	51244	N/A	Black Diamond	<b>52610</b>
		2010-18	JKU	No	51243	N/A	Black Diamond	<b>52584</b>
		2010-18	JK	No	51243	N/A	Black Diamond	<b>52583</b>
		2007-09	JKU	No	51243	N/A	Black Diamond, Mesh	<b>52581</b>
		2004-06	LJ/TJU	No	51238	N/A	Black Diamond	<b>52544</b>
		2003-06	TJ	No	51238	N/A	Black Diamond, Mesh	<b>52532</b>
		1997-02	TJ	No	51238	N/A	Black Denim, Spice, Mesh	<b>52531</b>
SUN TARGA BIKINI		2018-Current	JL/JLU/Gladiator	No	N/A	N/A	Mesh	<b>52410</b>
		2007-18	JK/JKU	No	N/A	N/A	Black Diamond, Mesh	<b>52400</b>
		1997-2006	TJ	No	N/A	N/A	Black Diamond, Mesh	<b>52403</b>
SUN SAFARI BIKINI		2020-22	Gladiator	No	N/A	N/A	Mesh	<b>52413</b>
		2018-Current	JLU	No	N/A	N/A	Mesh	<b>52411</b>
		2018-Current	JL	No	N/A	N/A	Mesh	<b>52412</b>
		2007-18	JKU	No	N/A	N/A	Black Diamond, Mesh	<b>52401</b>
		2007-18	JK	No	N/A	N/A	Black Diamond, Mesh	<b>52402</b>
		1997-2006	TJ	No	N/A	N/A	Black Diamond, Mesh	<b>52404</b>
ACCESS SAFARI BIKINI		2021-Current	Bronco 2DR	No	Compatible with Trektop, OE Soft top and OE Hardtop	N/A	Mesh	<b>52420</b>
		2021-Current	Bronco 4DR	No	Compatible with Trektop, OE Soft top and OE Hardtop	N/A	Mesh	<b>52421</b>