



# OPEN MESH GRILLE

(2007-2018 WRANGLER JK)

---

## INSTALLATION INSTRUCTIONS

### CONTENTS

---

- (1) Grille Cover
- (6) Metal Clips
- (1) Weather Stripping

### TOOLS REQUIRED

---

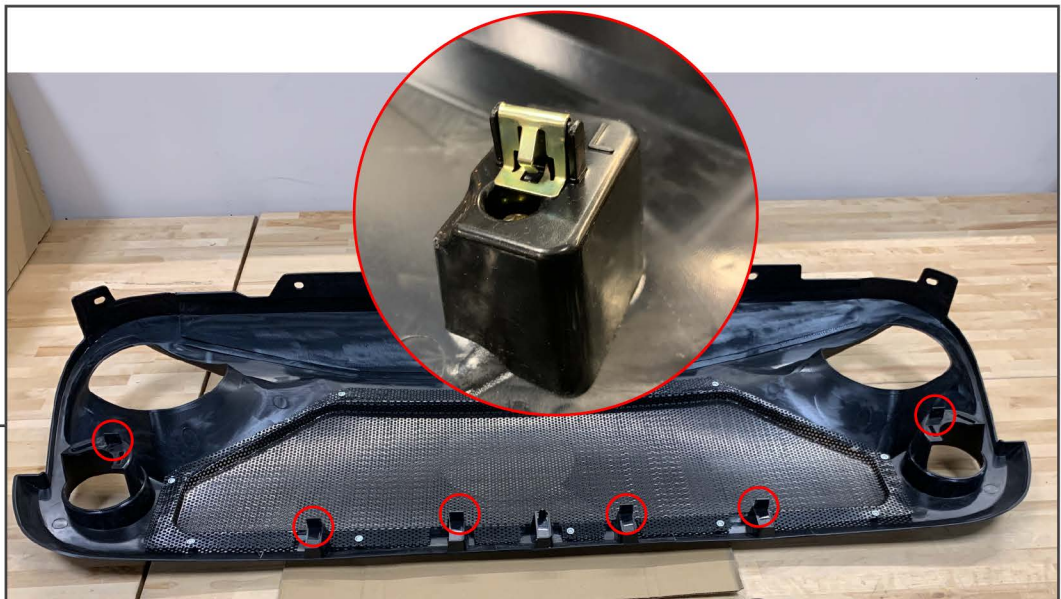
- Soft Pry Tool
- Flat Blade Screwdriver

SKU # J134255/J134256



**STEP 1**

Using a soft pry tool, remove the (6) plastic push pins across the top of the factory grille cover. Then firmly pull the grille cover away from the vehicle. Disconnect the factory turn signal plugs. Slide back the red tab lock, then depress the tab and pull the plug away from the light.



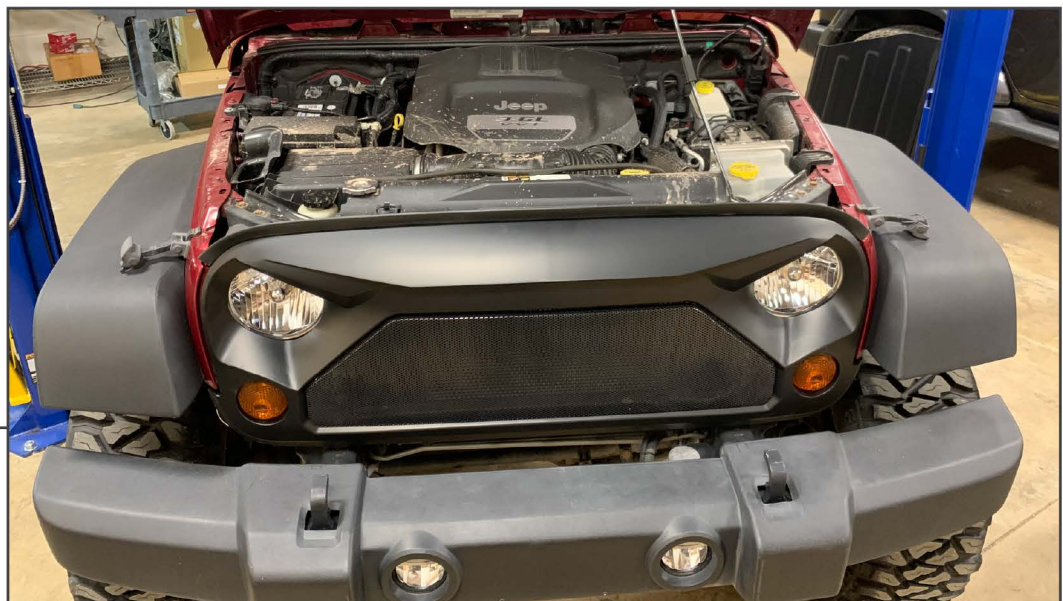
**STEP 2**

Install the (6) supplied push clips to the clip posts across the bottom of the new grille.



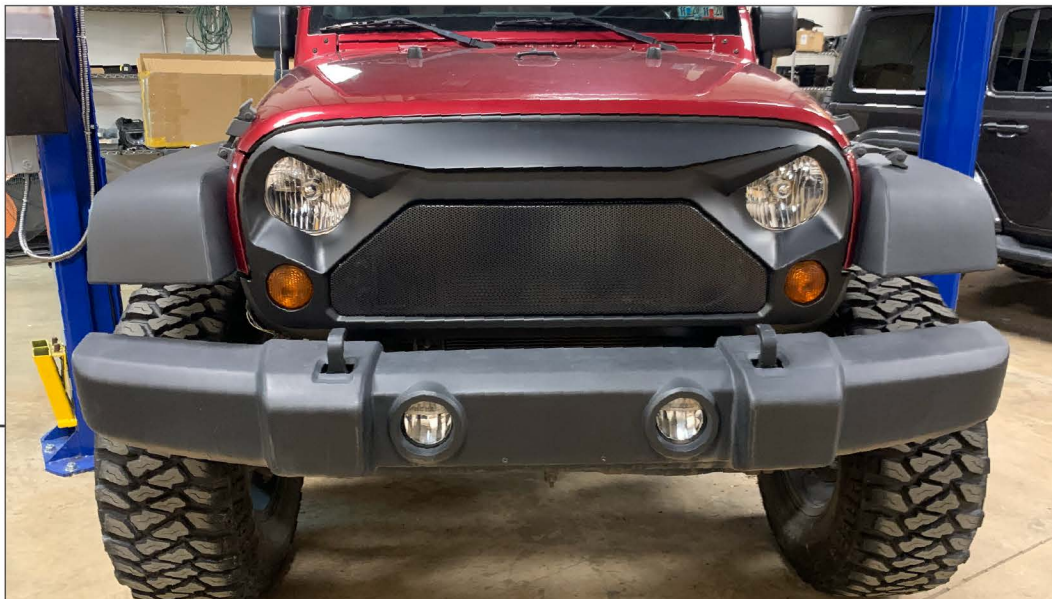
**STEP 3**

Depress the plastic tabs on the turn signal and push the turn signal out of the factory grille cover. Transfer the removed turn signals into the new grille.



**STEP 4**

Install the grille using the (6) plastic push pins. Center the supplied weather stripping across the top of the grille.



---

**STEP 5**

Close the hood and tuck the weather stripping under the hood as needed. The weather stripping will form to the hood over time. Installation is now complete.