



GLADIATOR GRILLE COVER

(1997-2006 WRANGLER TJ)

INSTALLATION INSTRUCTIONS

CONTENTS

- (1) Grille Cover
- (2) Plastic Push Clips
- (4) M6x1.00 15mm Bolts
- (4) M6 Washers
- (4) M6 Nuts

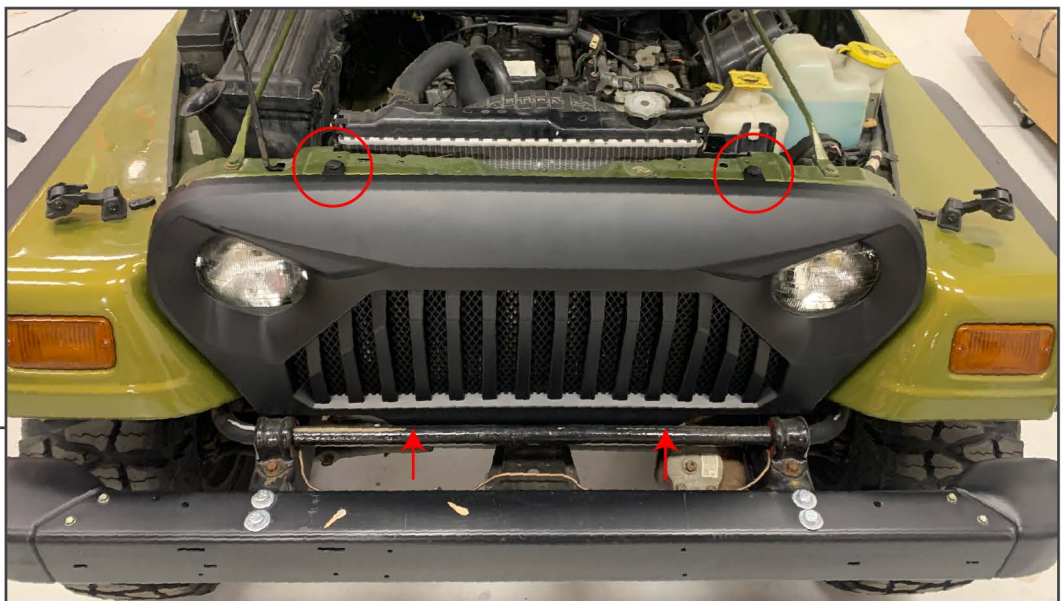
TOOLS REQUIRED

- 10mm Socket
- Socket Wrench
- Rotary Cutting Tool

SKU # J134254

**STEP 1**

Using a 10mm socket, remove the (4) bolts securing the bumper filler panel to the vehicle.

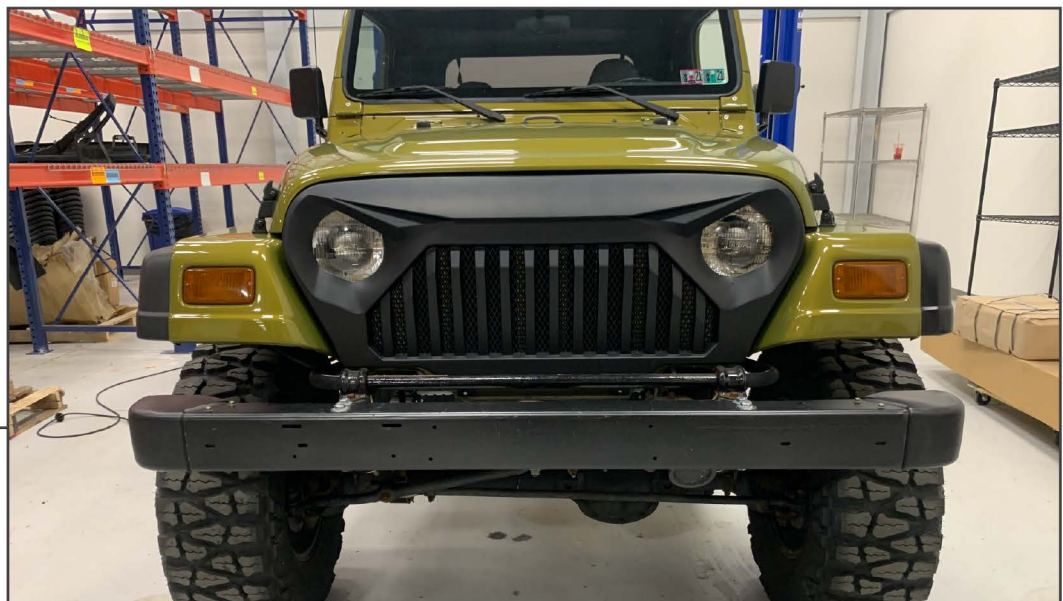
**STEP 2**

Place the grille cover onto the vehicle. Secure the top tabs using the supplier plastic push pins. Secure the bottom of the grille to the vehicle using the (2) bolts, washers, and nuts.



STEP 3

Optional: Trim the bumper filler panel to fit between the grille cover and the sway bar. Carefully remove material for best fit.



STEP 4

Installation is now complete.