



# LED REAR BUMPER REFLECTOR LIGHTS

(2018+ Wrangler JL SAHARA, RUBICON, MOAB only)

---

## INSTALLATION INSTRUCTIONS

### CONTENTS

---

- (1) LH Light
- (1) RH Light
- (4) Scotchlok Connectors
- (2) Zip Ties

### TOOLS REQUIRED

---

- 7, 8, 16, 19mm Socket & Wrenches
- Ratchet
- Flat Blade Screw Driver
- Pliers

SKU: J134140-JL J134141-JL

## STEP 1



For this install, you will need access to the back of the factory reflectors. To do so removal of the bumper will be required.

## STEP 2



Begin by removing the rear most fender liners from both sides of the bumper. Use an 8mm socket to remove the (3) screws.



## STEP 3

Behind the fender liners removed in Step 2, remove the (4) 16mm bumper brace bolts on both sides of the bumper.



## STEP 4

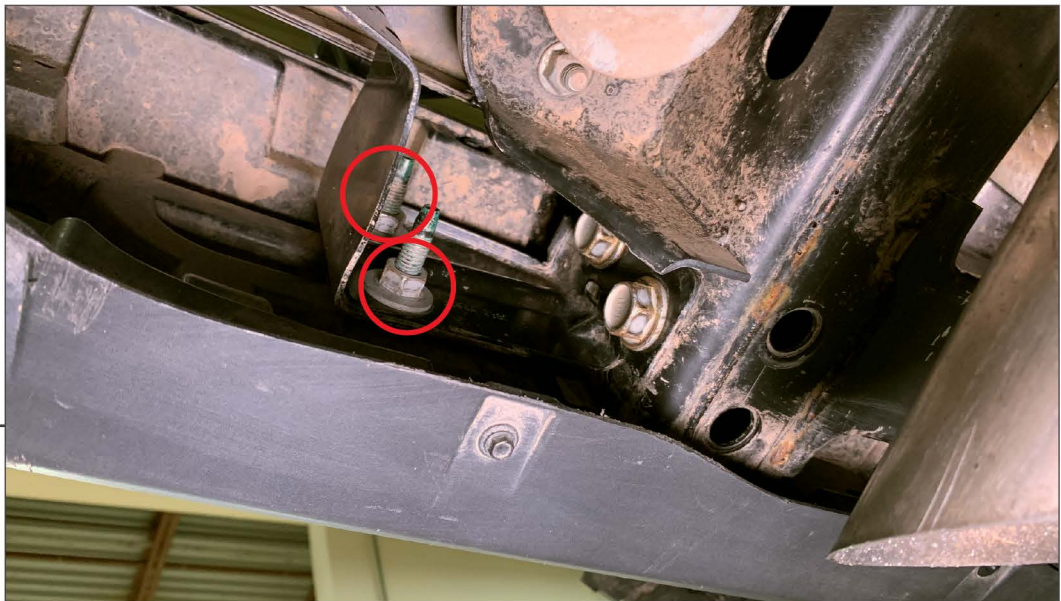
On the driver side of the bumper, locate and unplug the bumper's electrical connector. Then disconnect the wiring harness clip from the support bracket.





## STEP 5

Remove the (2) 18mm bolts securing the center of the bumper to the vehicle.



## STEP 6

With a helper supporting the bumper remove the (2) 16mm nuts securing the bumper to the vehicle. Repeat the process on both sides of the bumper.



## STEP 7

Using a 7mm socket, remove the screw securing the factory reflector to the vehicle. Then press the reflector out of the bumper.



## STEP 8

Feed the wires through the hole at the bottom of the reflector opening. Before pressing the light into the bumper, ensure the wiring is routed behind the light's clip.





**STEP 9**

Route the wiring from the RH light over to the LH light.



**STEP 10**

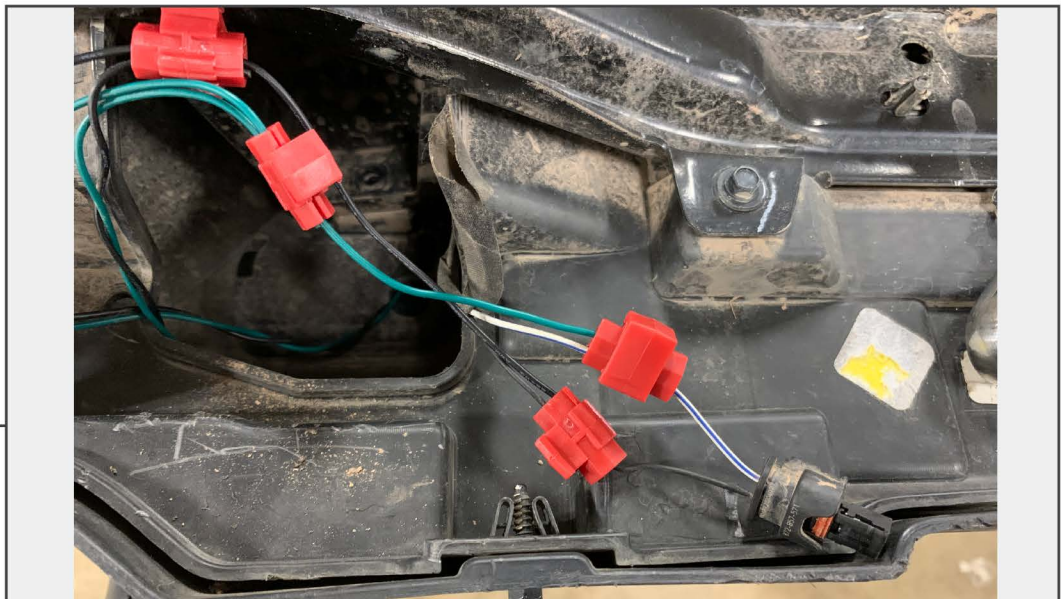
Repeat Steps 7-8 on the LH reflector and light.

## STEP 11



Using the (2) of the supplied Scotchlok connectors, join the RH light and LH light wiring together.

## STEP 12



Unplug the license plate light plug. Peel back some of the electrical tape to gain access to the plugs wiring. Using (2) of the Scotchlok connectors connect the LED light wiring to the license plate plug.

**LED Wire Color**  
Black  
Green

-  
-  
-

**License Plate Wiring Color**  
Black  
White/Blue





---

## STEP 13

Test the lights by plugging the license plate plug back in and then connect the bumper connector removed in Step 4. Once the lights are confirmed working, Reinstall the bumper in reverse order.