



OE-REPLACEMENT SOFT TOP

(2010-2018 WRANGLER JK 4 DOOR)

INSTALLATION INSTRUCTIONS

CONTENTS

- (1) Top
- (1) LH Quarter Window
- (1) RH Quarter Window
- (1) Rear Window
- (1) LH Foam
- (1) RH Foam
- (2) Foam Strips

TOOLS REQUIRED

- Masking Tape
- Tape Measure
- Marker
- Phillips Head Screw Driver
- T-15 Torx Driver
- Pliers

SKU # J134007

STEP 1



Start by confirming that your vehicle has the factory soft top frame/hardware. If your vehicle does not you will need to purchase a factory frame/hardware for this installation. Vehicles that came with a factory hardtop typically do not have the factory frame/hardware.

STEP 2



Begin removing the installed soft top, unzip the rear window and remove the tailgate bar.

STEP 3

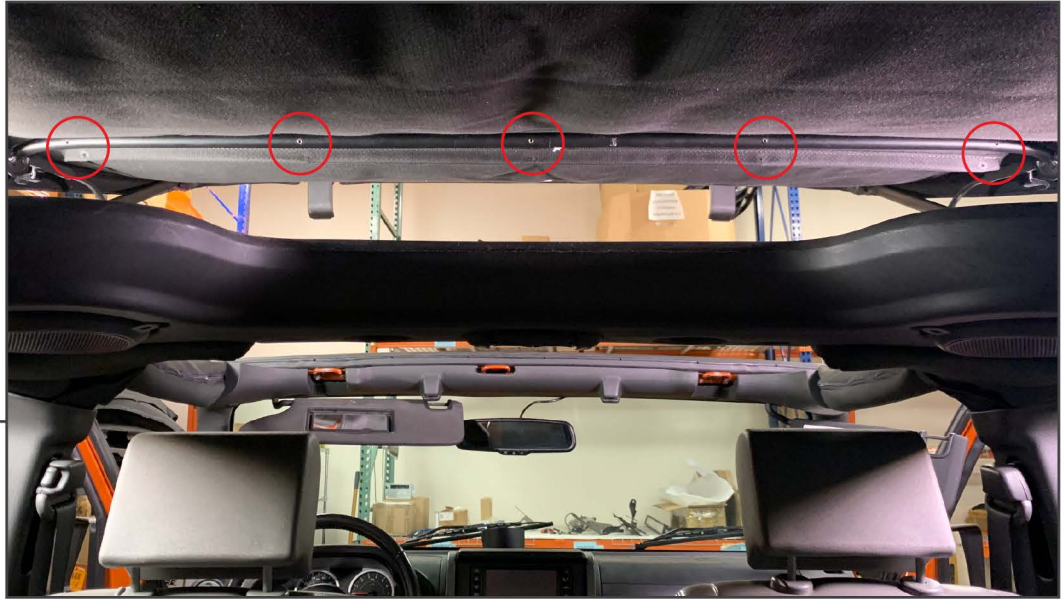


Unzip and remove both rear quarter windows.

STEP 4



Fold down the mirrors and unlatch the (2) latches over the windshield.



STEP 5

Fold the top back to gain access to the screws securing the top to the frame/hardware. Remove the (5) Phillips head screws securing the top to the front bow. The screws will be reused during re installation.



STEP 6

Remove the (4) Phillips head screws securing the top to the center bow. The screws will be reused during re installation.



STEP 7

Next, remove the (4) screws that hold the top to the rear bow. The screws will be reused during re installation.



STEP 8

With the top half down, remove the (2) screws that hold the tensioning cable anchors to the front of the top. There is (1) anchors per side. Peel back the foam covering the Phillips/Torx head screws. Then remove the screws. These will be reused during re installation.



STEP 9

Disconnect the cables from the frame/hardware. Gently fold back the plastic cover and unhook the spring.



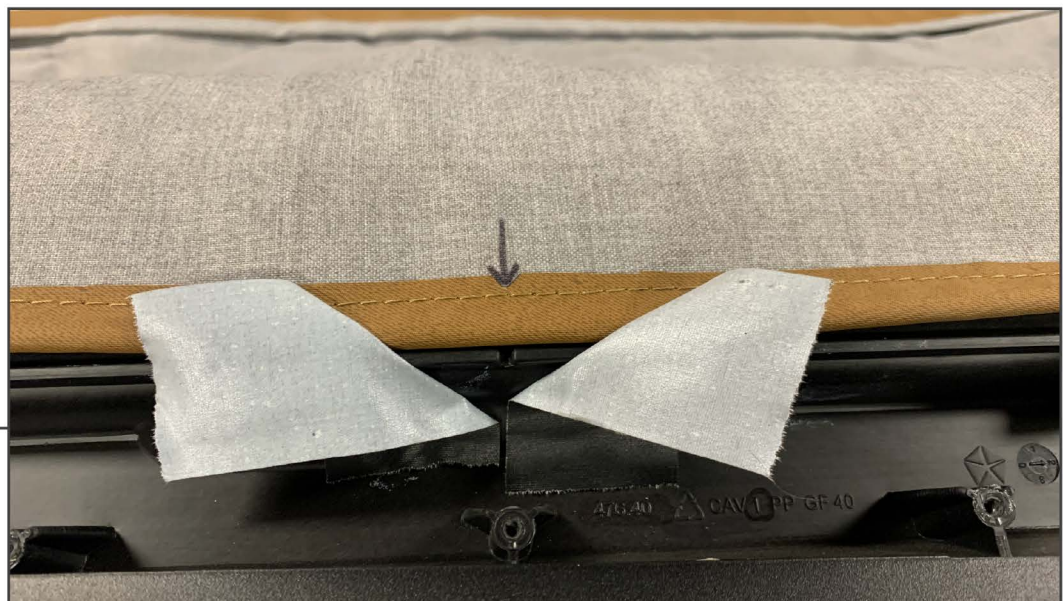
STEP 10

Fold the entire top over the front of the vehicle to access the header. The header clamps the front edge of the top onto the frame/hardware. There are (27) screws, carefully remove all the screws, keep note of what screws go where as there are (2) different length screws.



STEP 11

Using a tape measure, measure the width of the front edge of the top. On the underside of the top, mark the center line.



STEP 12

Using the mark made in Step 11, center the top to the notch in the factory header. Using masking tape, tape the top to the header to prevent it from moving during installation of the header sandwich plate.

STEP 13



Install the header sandwich plate. Install the screws working from the center out. Carefully tuck the corner of the top into the header plate.

STEP 14



Fold the top back over the windshield onto the factory frame/hardware.



STEP 15

Fold the front of the top back. Secure the tensioning cable anchor to the header using the original hardware.



STEP 16

Apply the supplied foam over the tensioning cable anchor.



STEP 17

Feed the tensioning spring through the plastic shroud. Using pliers, attach the spring to the frame/hardware.



STEP 18

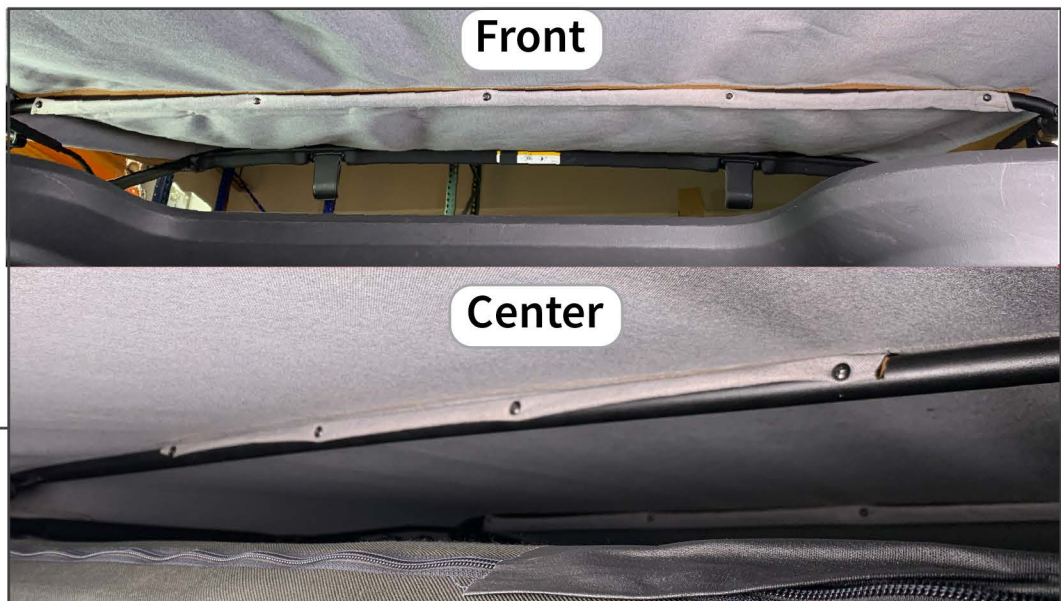
Secure the rear corners to the vehicle by tucking the plastic under the retaining lip on the rear of the vehicle.

STEP 19



Secure the top to the rear bow using the original hardware. The fabric mounting tabs do not come with pre-drilled holes. Carefully screw the factory hardware through the fabric tabs into the metal bow.

STEP 20



Fold the front of the top forward some to apply some tension on the top. Secure the top to the front bow using the original hardware. Then secure the center bow to the rear of the center bow. The fabric mounting tab does not come with pre-drilled holes. Carefully screw the factory hardware through the fabric tab into the metal bow.

STEP 21



Secure the header to the vehicle by reconnecting the factory hooks to the windshield frame. Then push down on the latch to secure it to the vehicle. New tops are normally tighter and may require more effort when pulling them down onto the windshield.

STEP 22



Install the rear quarter windows. Begin by aligning the zipper halves. Then hook the rigid front edge into the door surround.

STEP 23



Zip the zipper to the bottom rear of the window. Fasten the hook and loop over the top of the rear window. Then tuck the bottom edge of the window under the retaining lip on the rear of the vehicle.

STEP 24



Install the rear window into the tailgate bar C-channel as shown. Thoroughly read steps 25-28 for rear window installation tip and tricks.

STEP 25



Align the zipper halves on the rear window and the top. Gently start pulling the slider around the window. Take special care around the first corner, pull up on the window as you pull the zipper around the corner. Once the rear window is zipped half way(center of the window) STOP.

STEP 26



Rotate the tailgate bar out of the mount on the vehicle. This will make zipping the rear window easier.



STEP 27

Unzip the left hand side of the slider half way up the window(1). Then, align the sliders 12” apart on the top of the window. Doing it this way will put less stress on the zipper and window components.



STEP 28

Carefully pull the sliders down each side of the window at the same time. On the inside of the top there is a flap to cover the back of the zipper. Ensure the flap is tucked behind the zipper and window. The flap is pulled in front of the window and zipper in the photo for easy visualization. The flap will be behind everything when properly installed. Rotate the tailgate bar back into it's mount to complete the installation.

COMPLETE



Maintenance and Care:

Windows- Always use automotive grade soap and water to clean the windows. Wiping the windows when dry will cause scratching. Fine scratches can be carefully polished out using plastic window polish.

Top- Always wash using automotive grade soap and water. A soft bristle brush can be used to remove heavier dirt. Rinse the top until the water runs clear to prevent discoloration.



Zipper Fix

Zippers- Always keep the zippers clean and lubricated. If the zipper is opening behind the slider; it is likely that the jaws of the slider have opened slightly. The jaws of the slider need to be parallel for proper operation. To correct this situation, using pliers, tighten up the gap between the jaws.