



---

# TUBULAR SIDE STEP BARS

(2018+ WRANGLER JL 4 DOOR)

---

## INSTALLATION INSTRUCTIONS

### CONTENTS

---

- (1) Pair of Side Steps
- (2) Rear Pinch Weld Brackets
- (2) Middle Pinch Weld Brackets
- (2) Front Pinch Weld Brackets
- (6) M8x1.25 35mm Bolts
- (6) M8 Lock Washers
- (6) M8 Flat Washers
- (12) M6x1.00 35mm Bolts
- (12) M6 Lock Washers
- (12) M6 Flat Washers
- (6) Nut Plates
- (6) 3mm Spacers
- (6) 4.5mm Spacers

### TOOLS REQUIRED

---

- Ratchet
- Extension
- 10, 13mm Sockets
- 10mm Wrench

SKU # J133629-JL

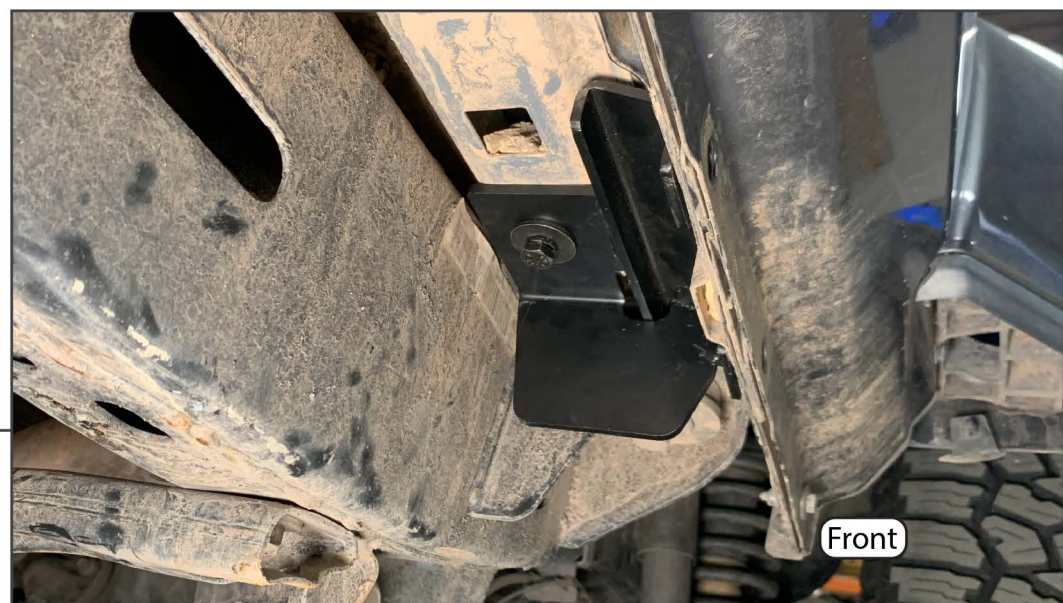


**STEP 1**



Begin by identifying the mounting bracket positions.

**STEP 2**



Using (1) M8x1.25 35mm bolt, M8 lock washer, and M8 flat washer loosely mount the front pinch weld bracket to the vehicle.



---

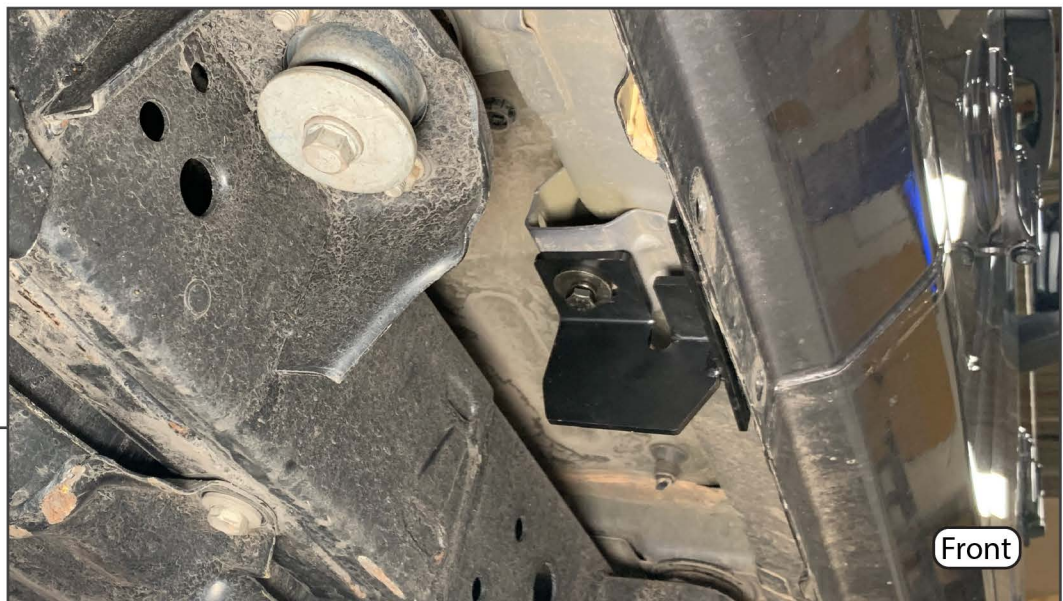
**STEP 3**



Using (1) M8x1.25 35mm bolt, M8 lock washer, and M8 flat washer loosely mount the middle pinch weld bracket to the vehicle.

---

**STEP 4**

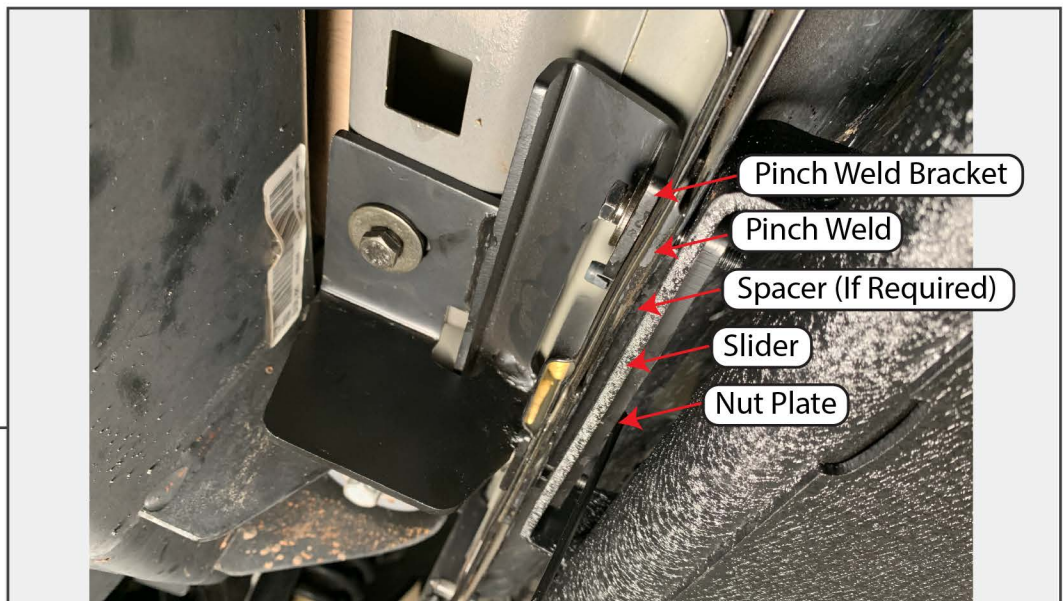


Using (1) M8x1.25 35mm bolt, M8 lock washer, and M8 flat washer loosely mount the rear pinch weld bracket to the vehicle.



### STEP 5

Next, determine if your vehicle will require any additional spacers. Carefully hold the side step the pinch welds of the vehicle. If the gap is consistent between the slider and the body of the vehicle you will not need to use spacers. If the slider gap is inconsistent, use the included spacers to create the desired gap.



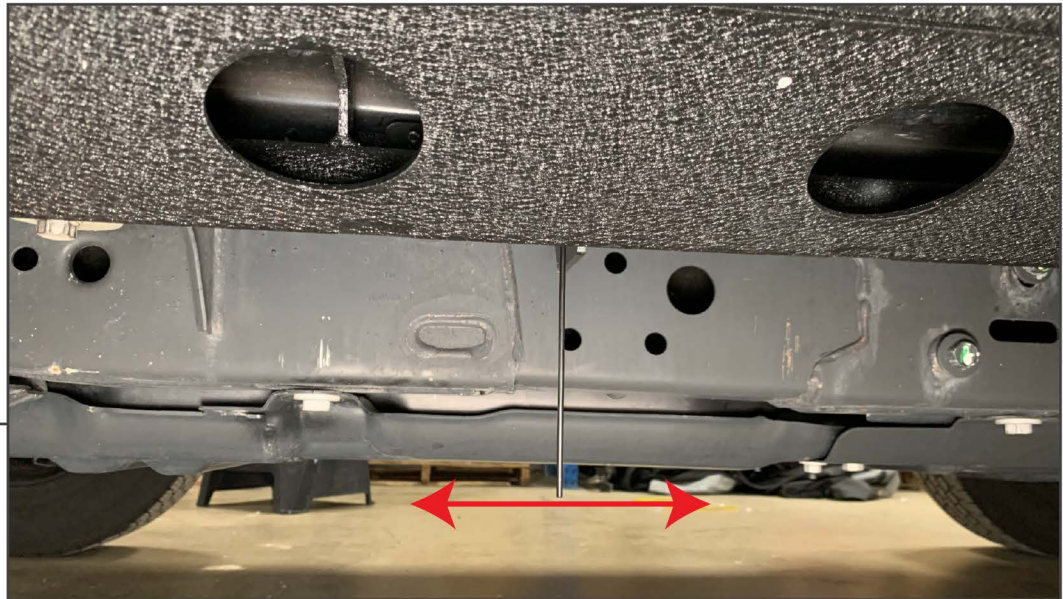
### STEP 6

Install the side step to the vehicle using (2) M6x1.00 35mm Bolts, (2) lock washers, (2) flat washers and (1) nut plate at each pinch weld location. If spacers are being used, install the spacer between the slider and the pinch weld. Having a friend hold the slider during installation will be helpful. Repeat the process at all mounting locations.



---

**STEP 7**



Once the side steps are bolted on, the nut plate holding rod is no longer necessary. Bend the rod back and forth. The rod will break off the plate. Discard the rod. Complete installation by torquing all fasteners following the chart below.

<b>Bolt Size</b>		<b>Torque Spec</b>
M6	-	8 ft/lbs
M8	-	18 ft/lbs